

Product datasheet for **RC200800**

MTX1 (NM_198883) Human Tagged ORF Clone

Product data:

Product Type:	Expression Plasmids
Product Name:	MTX1 (NM_198883) Human Tagged ORF Clone
Tag:	Myc-DDK
Symbol:	MTX1
Synonyms:	MTX; MTXN
Mammalian Cell Selection:	Neomycin
Vector:	pCMV6-Entry (PS100001)
E. coli Selection:	Kanamycin (25 ug/mL)



[View online »](#)

ORF Nucleotide Sequence:

>RC200800 ORF sequence
 Red=Cloning site Blue=ORF Green=Tags(s)

TTTTGTAATACGACTCACTATAGGGCGGCCGGGAATTCGTCGACTGGATCCGGTACCGAGGAGATCTGCC
 GCC**GCGATCGCC**

ATGCTGCTCGGGGACCCCCCGCAGTCCCCGCTCGGGGACGAGCCCCAAGGGCCCTGGAGCAGTACAG
 GCCACGTGCAGTTTGGCAAGAGCCCCAGACCTGGCCAGGCGCACAAAGACCCCGCTCTCCAGAGCCTGC
 CGCGCCTTCAGGGTTTCGGGGCTCCACTTGACGAGGCGCGGTGACTCTCCGAGGCGCGCCGGCCGACA
 GCGCTGTCCCGCTACGTGGGCCACCTCTGGATGGGCGGCGGCCCTCCCCGAGGCCCGCGGCCAG
 TCCCCGAGTTTACGTGCCAGTCGGGCCAGAAGAAGCCTCGCCTCCCCGGGGATCTCCCCAGGCCCTT
 GACCGCAACGATCGGAGGGCGGTGGCGGGGGCGGGCCAGGCAGGGGAGGCAGAAGCACACAAGGAA
 GTGTTTCCGGGACAGAGGTGGCAAGATGGCGGCGCCATGGAGCTGTTCTGCTGGTCAAGGGGCTGGG
 GGCTGCCGTCACTGGACCTGGACAGCCTGGCCGTGCTGACCTATGCCAGATTTACTGGTCTCCACTGAA
 GGTACACAAGATCAGCAACCCCTGGCAGAGCCCTTCAGGAAGCTGCCTGCCCTTCGACCAGTCATGGA
 GAGGTCATCTCAGTTCCACACAAGATCATCACCCACCTTCGAAAAGAGGTACATACTTTTTGGATAGACA
 CCAAGAACTACGTGGAAGTGACCCGGAAGTGGTATGCAGAGGCTATGCCCTTTCCCTCAACTTCTCTCT
 GCCTGGCCGATGCAGCGGCAGTACATGGAACGGCTACAGCTGCTGACTGGGAGCACAGGCCTGAGGAC
 GAGGAAGAGCTGGAGAAGGAGCTGTACCGAGAGGCTCGGGAGTGTCTGACCCTGCTCTCTCAGCGCTGG
 GCTCTCAAAGTTCTTCTTTGGAGATGCCCTGCCTCCTTGACGCCTTCGTCTTCAGCTACTTGGCCCT
 GCTGCTGACGGCAAAGCTGCCAGTGGGAAGCTGCAGGTCCACCTGCGTGGGCTGCACAACCTCTGTGCC
 TATTGTACCCACATTCTCAGTCTCTACTTCCCCGGGATGGAGCTGAGGTACCACCGCAACGCCAGACAC
 CAGCAGGCCAGAGACTGAGGAGGAGCCATACCGGCGCCGGAACCAGATCCTATCTGTGCTGGCAGGACT
 GGAGCCATGGTGGGCTACGCCTTGGCTCAGCGGCATTGTCTCCATCCAGCGGGCAACGCCTGCTCGGGCC
 CCAGGCACCCGGACCCTGGGCATGGCTGAGGAGGATGAAGAGGAA

ACGCGTACGCGGCCGCTCGAGCAGAACTCATCTCAGAAGAGGATCTGGCAGCAAATGATATCCTGGATT
 ACAAGGATGACGACGATAAGGTTTAA

Protein Sequence:

>RC200800 protein sequence
 Red=Cloning site Green=Tags(s)

MLLGGPPRSPRSGTSPKGPWSSTGHVQFGKSPQTPRRTRPRSPPEAAPSGVRGSTWTRRRDSPRRAGPT
 ALSRYVGHLMGRRPPSPEARGPVPRSSAASRARRSLASPGISPGPLTATIGGAVAGGGPRQGRAEAIHKE
 VFPGQRVGKMAAPMELFCWSSGWGLPSVDLDSLAVLTYARFTGAPLKVHKISNPWQSPSGTLPALRTSHG
 EVISVPHKIIITHLRKEVHTFWIDTKNYVEVTRKWAYEAMPFPLNFFLPGRMQRYMERLQLLTGEHRPED
 EELEKELYREARECLTLLSQRLGSQKFFFGDAPASLDAFVFSYLALLLQAKLPSGKLQVHLRGLHNLCA
 YCTHILSLYFPWDGAEVPPQRQTPAGPETEEEPYRRRNQILSVLAGLAAMVGYALLSGIVSIQRATPARA
 PGTRTLGMAEEDDEE

TRTRPLEQKLISEEDLAANDILDYKDDDDKV

Chromatograms:

https://cdn.origene.com/chromatograms/mk6588_a10.zip

Restriction Sites:

SgfI-MluI

Cloning Scheme:


ACCN: NM_198883

ORF Size: 1305 bp

OTI Disclaimer: The molecular sequence of this clone aligns with the gene accession number as a point of reference only. However, individual transcript sequences of the same gene can differ through naturally occurring variations (e.g. polymorphisms), each with its own valid existence. This clone is substantially in agreement with the reference, but a complete review of all prevailing variants is recommended prior to use. [More info](#)

OTI Annotation: This clone was engineered to express the complete ORF with an expression tag. Expression varies depending on the nature of the gene.

Components: The ORF clone is ion-exchange column purified and shipped in a 2D barcoded Matrix tube containing 10ug of transfection-ready, dried plasmid DNA (reconstitute with 100 ul of water).

Reconstitution Method:

1. Centrifuge at 5,000xg for 5min.
2. Carefully open the tube and add 100ul of sterile water to dissolve the DNA.
3. Close the tube and incubate for 10 minutes at room temperature.
4. Briefly vortex the tube and then do a quick spin (less than 5000xg) to concentrate the liquid at the bottom.
5. Store the suspended plasmid at -20°C. The DNA is stable for at least one year from date of shipping when stored at -20°C.

RefSeq: [NM_198883.3](#)

RefSeq Size: 1555 bp

RefSeq ORF: 1308 bp

Locus ID: 4580

UniProt ID: [Q13505](#)

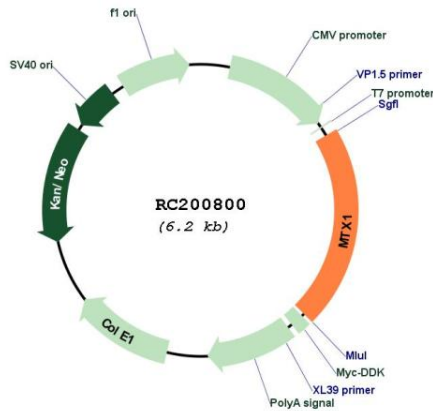
Cytogenetics: 1q22

Protein Families: Transmembrane

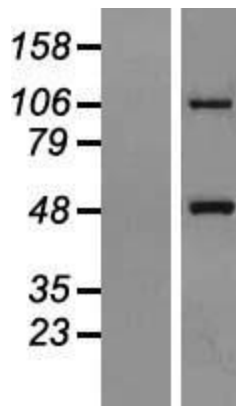
MW: 48 kDa

Gene Summary: Involved in transport of proteins into the mitochondrion. Essential for embryonic development (By similarity).[UniProtKB/Swiss-Prot Function]

Product images:



Circular map for RC200800



Western blot validation of overexpression lysate (Cat# [LY404767]) using anti-DDK antibody (Cat# [TA50011-100]). Left: Cell lysates from untransfected HEK293T cells; Right: Cell lysates from HEK293T cells transfected with RC200800 using transfection reagent MegaTran 2.0 (Cat# [TT210002]).