

Product datasheet for **RC200798**

CEP68 (NM_015147) Human Tagged ORF Clone

Product data:

Product Type:	Expression Plasmids
Product Name:	CEP68 (NM_015147) Human Tagged ORF Clone
Tag:	Myc-DDK
Symbol:	CEP68
Synonyms:	KIAA0582
Mammalian Cell Selection:	Neomycin
Vector:	pCMV6-Entry (PS100001)
E. coli Selection:	Kanamycin (25 ug/mL)



[View online »](#)

ORF Nucleotide Sequence:

>RC200798 ORF sequence
 Red=Cloning site Blue=ORF Green=Tags(s)

TTTTGTAATACGACTCACTATAGGGCGGCCGGAATTCGTCGACTGGATCCGGTACCGAGGAGATCTGCC
 GCC**CGGATCGCC**

ATGGCCCTGGGTGAAGAAAAGGCAGAAGCGGAAGCATCTGAAGACACAAAGGCCAGTCCTATGGGAGAG
 GGAGCTGCAGGGAGCGGGAGCTGGACATCCCAGGGCCATGAGTGGGAGCAGCCCCACGCCTGGAAGC
 TGAGGGAGGGCTCATCTCCCTGTATGGGGGCAGAAGGATACCTGCCCTACTTGTGATTGGGACT
 GACCTGGCAGCCCTCTAGAGCCACCAGCCACAGGCCAGTGATGCCAACAGAGAGCCGTAGCTGAGA
 GGTCTGAGCTGCACTCAGTGGCTGCCTCTGCCACCATGGGGTCTGGAGACCTTCTGCTCTCCGGGA
 AAGCCAGTGGAGAAGACCAAGCTTTCTCCTCCGAGGAGTTCCTCAGACTCTGAGCCTCCAGAACAA
 ACAACTATTTGCTCAGGACATGATGCTGATACCGAAGATGATCCATCCCTAGCAGATTTGCCCCAGGCAC
 TGGACCTCAGCCAGCAGCTCACAGCTCAGGTCTCTCTTGCTGTACAGTGAAGTCCGTGCTGAGCCC
 AGGTTCCGAGCTCAGCCTTCCAGCTGCAGCATCTCTGCTTCTCCACGGGCAGCAGTCTCCAGGGTAC
 CAGGAGAGGGCGGAGCCTCGTGGTGGTTCTCTGGCCAAGGTCTCCTCCTCCCTGGAGCCGGTCTGCCCC
 AGGAACCTTCTCTGTGGTGGGGCTAGGACCTCGGCCCAAGTGGTCAACCACAGCCTGTGTTCTCTGGGG
 TGATGTTCTGGGCTAGGCAGGAGACGCCTCTCCTCCAGGCTGAGTACTGGGCCTGTGTGCTGCCAGAT
 TCCCTGCCTCCATCACCCGACCGCCACTCCCCTCTCTGGAACCCAAATAAAGAGTATGAAGATCTGCTTG
 ACTATACTTACCCACTGAGGCCCGGGCTCAGCTCCCAAAGCACCTTGATAGCCGTGTGCCAGCTGACCC
 TGTCTGCAGGACTCCGGGTAGACCTGGATAGCTTCTGTCTCTCCAGCAAGCACCTCAAATCACCT
 ACTAATGTCTCCCCAACTGCCACCAGCAGAGGCCACTGCCCTGCCATTTCTGGGCCAGAGAGCCAA
 GCCTTAAGCAGTGGCCCTCCAGAGTACCCAGAAACAGGGTGGCATGGGCTTGGCATCTTGGAGCCAACT
 TGCATCTACCCAGAGCCCGAGCAGTAGGGATGCTCGTTGGGAGCGCAGAGAGCCAGCCCTGAGGGGT
 GCGAAGGACCGGCTGACTATAGGCAAGCACCTTGATATGGGCTCTCCCCAGCTAAGGACACGGGACAGAG
 GGTGGCCCTCGCCAGGCCAGAGAGGGAGAAGAGGACCAGCCAGAGTGCCCGGCGCCCTACTGCACAGA
 GTCTAGGTGGAATCAGAAGAGGAAGTGGAAAGTATGACGAGTATCTTGCCTCCCGCTCGGCTGACA
 CAGACATTTTGTGTGCTGAGCTGGAAGAGCTGATCTGCTGGTGTATAATGTTGCAGATGTTACTGACCAG
 GGACTGCAGCCAGGTCCAATCTTACAAGTCTCAAGTCTTCTCTGCAGCTTACCAGCAATTAAGAAAGA
 TATAGATGAACATCAGTCTCTGACGGAGAGTGTCTTACAGAAGGGGGAGATTCTTCTTCAAGTGCCTGTTG
 GAGAACACCCAGTTTTAGAGGATGCTCTGGGAGGATCGAAAGCAGTCTGGTGAAGCTGGAGAGCCAGC
 CAGATCGCTGTATGACTCTATCTTGGCCTCTCTGGACATGCTGGCTGGCTGCACCCCTATCCCTGACAA
 AAGCCCATGGCGCAATGGAGCACCCATGTGAAGGGTT

ACGCGTACGCGGCCGCTCGAGCAGAACTCATCTCAGAAGAGGATCTGGCAGCAATGATATCCTGGATT
 ACAAGGATGACGACGATAAGGTTTAA

Protein Sequence:

>RC200798 protein sequence
 Red=Cloning site Green=Tags(s)

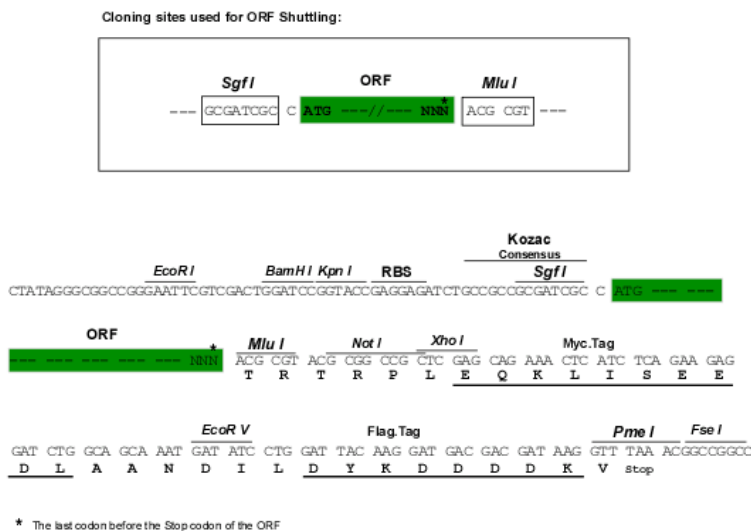
MALGEEKAEAEASEDTKAQSYGRGSCRERELDIPGPMSEQPPRLEAEGGLISPVWGAEGIPAPTWCWIGT
 DPGSPSRAHQASDANREPVAERSEPALSGLPATMGSGLLLSGESQVEKTKLSSSEFPQTLSPRT
 TTICSGHDADTEDDPSLADLPQALDLQQPHSSGLSCLSQWKSVLSPGSAAPSSCSISASSTGSSLQGH
 QERAEPGGSLAKVSSSLEPVVQEPSSVVGLGPRPQWSPQPVFSGGDASGLGRRRLSFQAEYWACVLPD
 SLPPSPDRHSPLWNPKEYEDLLDYTYPLRPGPQLPKHLDSRVPADPVLQDSGVLDLDSFVSPASTLKSP
 TNVSPNCPAEATALPFGPREPSLKQWPSRVPKQGGMGLASWSQLASTPRAPGSRDARWERREPALRG
 AKDRLTIGKHLDMGSPQLRTRDRGWSPRPEREKRTSQSARRPTCTESRWKSEEEVESDDEYLALPARLT
 QTFCCQLEELICWLYNVADVTDHGTAARSNLTSLKSSLQLYRQFKKIDIEHQSLTESVLQKGEILLQCLL
 ENTPVLEVDLGRIAKQSGELESADRLYDSILASLMDLAGCTLIPDKKPMAMEHPCEGV

TRTRPLEQKLISEEDLAANDILDYKDDDDKV

Chromatograms: https://cdn.origene.com/chromatograms/mk6588_e08.zip

Restriction Sites: SgfI-MluI

Cloning Scheme:



ACCN: NM_015147

ORF Size: 2199 bp

OTI Disclaimer: The molecular sequence of this clone aligns with the gene accession number as a point of reference only. However, individual transcript sequences of the same gene can differ through naturally occurring variations (e.g. polymorphisms), each with its own valid existence. This clone is substantially in agreement with the reference, but a complete review of all prevailing variants is recommended prior to use. [More info](#)

OTI Annotation: This clone was engineered to express the complete ORF with an expression tag. Expression varies depending on the nature of the gene.

Components: The ORF clone is ion-exchange column purified and shipped in a 2D barcoded Matrix tube containing 10ug of transfection-ready, dried plasmid DNA (reconstitute with 100 ul of water).

Reconstitution Method:

1. Centrifuge at 5,000xg for 5min.
2. Carefully open the tube and add 100ul of sterile water to dissolve the DNA.
3. Close the tube and incubate for 10 minutes at room temperature.
4. Briefly vortex the tube and then do a quick spin (less than 5000xg) to concentrate the liquid at the bottom.
5. Store the suspended plasmid at -20°C. The DNA is stable for at least one year from date of shipping when stored at -20°C.

RefSeq: [NM_015147.1](#), [NP_055962.1](#)

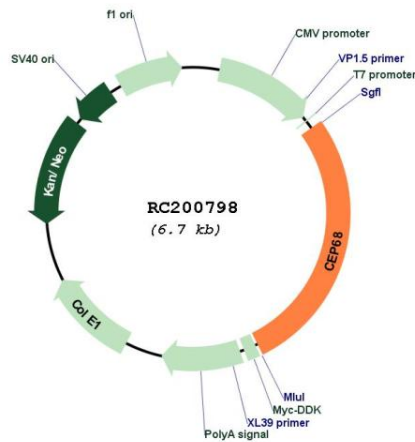
RefSeq Size: 5877 bp

RefSeq ORF: 2274 bp

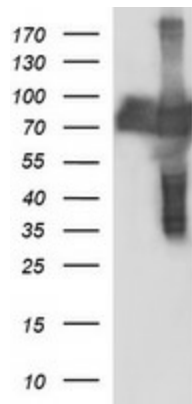
Locus ID: 23177
UniProt ID: [Q76N32](#)
Cytogenetics: 2p14
MW: 67.1 kDa

Gene Summary: Involved in maintenance of centrosome cohesion, probably as part of a linker structure which prevents centrosome splitting (PubMed:18042621). Required for localization of CDK5RAP2 to the centrosome during interphase (PubMed:24554434, PubMed:25503564).[UniProtKB/Swiss-Prot Function]

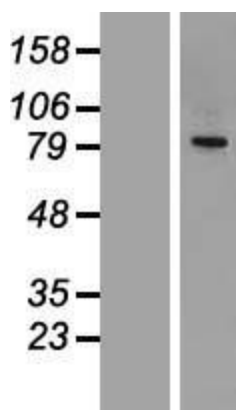
Product images:



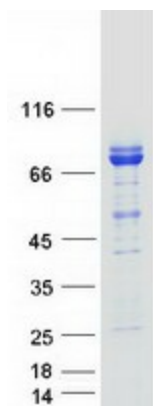
Circular map for RC200798



HEK293T cells were transfected with the pCMV6-ENTRY control (Cat# [PS100001], Left lane) or pCMV6-ENTRY CEP68 (Cat# RC200798, Right lane) cDNA for 48 hrs and lysed. Equivalent amounts of cell lysates (5 ug per lane) were separated by SDS-PAGE and immunoblotted with anti-CEP68(Cat# [TA507021]). Positive lysates [LY414743] (100ug) and [LC414743] (20ug) can be purchased separately from OriGene.



Western blot validation of overexpression lysate (Cat# [LY414743]) using anti-DDK antibody (Cat# [TA50011-100]). Left: Cell lysates from untransfected HEK293T cells; Right: Cell lysates from HEK293T cells transfected with RC200798 using transfection reagent MegaTran 2.0 (Cat# [TT210002]).



Coomassie blue staining of purified CEP68 protein (Cat# [TP300798]). The protein was produced from HEK293T cells transfected with CEP68 cDNA clone (Cat# RC200798) using MegaTran 2.0 (Cat# [TT210002]).