

Product datasheet for **RC200790**

CUEDC2 (NM_024040) Human Tagged ORF Clone

Product data:

Product Type:	Expression Plasmids
Product Name:	CUEDC2 (NM_024040) Human Tagged ORF Clone
Tag:	Myc-DDK
Symbol:	CUEDC2
Synonyms:	bA18114.5; C10orf66
Mammalian Cell Selection:	Neomycin
Vector:	pCMV6-Entry (PS100001)
E. coli Selection:	Kanamycin (25 ug/mL)
ORF Nucleotide Sequence:	>RC200790 ORF sequence Red=Cloning site Blue=ORF Green=Tags(s)

TTTTGTAATACGACTCACTATAGGGCGCCGGGAATTCGTCGACTGGATCCGGTACCGAGGAGATCTGCC
GCC**CGATCGCC**

ATGGAGCTGGAGAGGATCGTCAGTGCAGCCCTCCTTGCCTTTGTCCAGACACACCTCCCGGAGGCCGACC
TCAGTGGCTTGGATGAGGTCATCTTCTCCTATGTGCTTGGGGTCTGGAGGACCTGGGCCCTCGGGCCC
ATCAGAGGAGAACTTCGATATGGAGGCTTCACTGAGATGATGGAGGCCTATGTGCTGGCTTCGCCAC
ATCCCCAGGGGCACAATAGGGGACATGATGCAGAAGCTCTCAGGGCAGCTGAGCGATGCCAGGAACAAAG
AGAACCTGCAACCGCAGAGCTCTGGTGTCCAAGGTCAGGTGCCATCTCCCAGAGCCCCGCAGCGGCC
CGAAATGCTCAAAGAAGAGACTAGGTCTTCGGCTGCTGCTGCTGCAGACACCCAAGATGAGGCAACTGGC
GCTGAGGAGGAGCTTCTGCCAGGGTGGATGACTCCTGGAGGTGTTCCCTACCTGTTCCGGTGGAGCAGG
CCCAGTGGGTGCTGGCCAAAGCTCGGGGGGACTTGAAGAAGCTGTGCAGATGCTGGTAGAGGAAAGGA
AGAGGGGCTGCAGCCTGGGAGGGCCCCAACAGGACCTGCCAGACGCCTCAGAGGCCCCCAAAAGGAT
GAGCTGAAGTCTTCATCCTGCAGAAGTACATGATGGTGGATAGCGCA

ACGCGTACGCGGGCCGCTCGAGCAGAACTCATCTCAGAAGAGGATCTGGCAGCAAATGATATCCTGGATT
ACAAGGATGACGACGATAAGGTTTAA



[View online »](#)

Protein Sequence: >RC200790 protein sequence
 Red=Cloning site Green=Tags(s)
 MELERIVSAALLAFVQTHLPEADLSGLDEVIFSYVLGVLEDLGPSGPSEENFDMEAFTEMMEAYVPGFAH
 IPRGTIGDMMQKLSGQLSDARNKENLQPQSSGVQGVPI SPELQRP EMLKEETRSSAAAAADTQDEATG
 AEEELLPGVDVLLLEVFTCSVEQAQWVLAKARGDLEEAVQMLVEGKEE GPAAWEGPNQDLPRRLRGFQKD
 ELKSFILQKYYMMVDSA

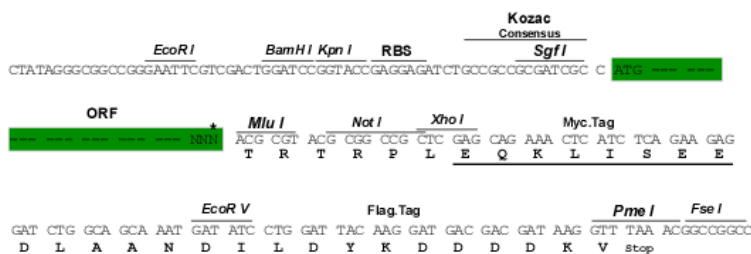
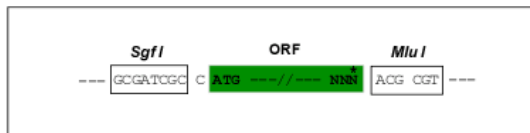
TRTRPLEQKLISEEDLAANDILDYKDDDDKV

Chromatograms: https://cdn.origene.com/chromatograms/mk6071_d02.zip

Restriction Sites: SgfI-MluI

Cloning Scheme:

Cloning sites used for ORF Shuttling:



* The last codon before the Stop codon of the ORF

ACCN: NM_024040

ORF Size: 678 bp

OTI Disclaimer: The molecular sequence of this clone aligns with the gene accession number as a point of reference only. However, individual transcript sequences of the same gene can differ through naturally occurring variations (e.g. polymorphisms), each with its own valid existence. This clone is substantially in agreement with the reference, but a complete review of all prevailing variants is recommended prior to use. [More info](#)

OTI Annotation: This clone was engineered to express the complete ORF with an expression tag. Expression varies depending on the nature of the gene.

Components: The ORF clone is ion-exchange column purified and shipped in a 2D barcoded Matrix tube containing 10ug of transfection-ready, dried plasmid DNA (reconstitute with 100 ul of water).

Reconstitution Method:

1. Centrifuge at 5,000xg for 5min.
2. Carefully open the tube and add 100ul of sterile water to dissolve the DNA.
3. Close the tube and incubate for 10 minutes at room temperature.
4. Briefly vortex the tube and then do a quick spin (less than 5000xg) to concentrate the liquid at the bottom.
5. Store the suspended plasmid at -20°C. The DNA is stable for at least one year from date of shipping when stored at -20°C.

RefSeq: [NM_024040.1](#), [NP_076945.1](#)

RefSeq Size: 1203 bp

RefSeq ORF: 864 bp

Locus ID: 79004

UniProt ID: [Q9H467](#)

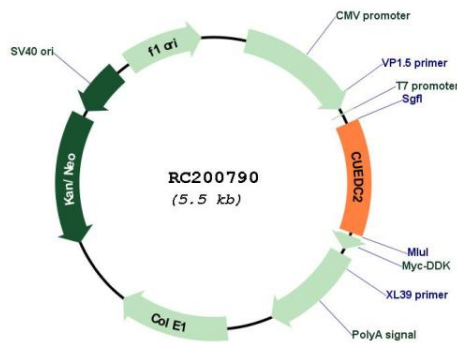
Cytogenetics: 10q24.32

Domains: CUE

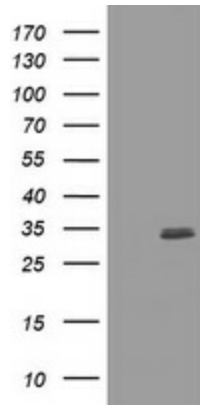
MW: 24.7 kDa

Gene Summary: Down-regulates ESR1 protein levels through the ubiquitination-proteasome pathway, regardless of the presence of 17 beta-estradiol. Also involved in 17 beta-estradiol-induced ESR1 degradation. Controls PGR protein levels through a similar mechanism. [UniProtKB/Swiss-Prot Function]

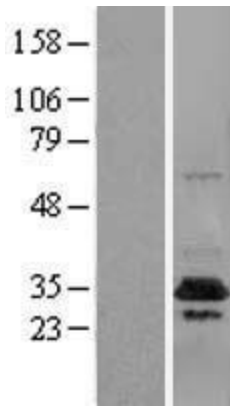
Product images:



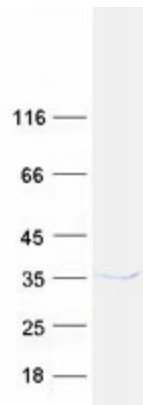
Circular map for RC200790



HEK293T cells were transfected with the pCMV6-ENTRY control (Cat# [PS100001], Left lane) or pCMV6-ENTRY CUEDC2 (Cat# RC200790, Right lane) cDNA for 48 hrs and lysed. Equivalent amounts of cell lysates (5 ug per lane) were separated by SDS-PAGE and immunoblotted with anti-CUEDC2 (Cat# [TA800815]). Positive lysates [LY411416] (100ug) and [LC411416] (20ug) can be purchased separately from OriGene.



Western blot validation of overexpression lysate (Cat# [LY411416]) using anti-DDK antibody (Cat# [TA50011-100]). Left: Cell lysates from untransfected HEK293T cells; Right: Cell lysates from HEK293T cells transfected with RC200790 using transfection reagent MegaTran 2.0 (Cat# [TT210002]).



Coomassie blue staining of purified CUEDC2 protein (Cat# [TP300790]). The protein was produced from HEK293T cells transfected with CUEDC2 cDNA clone (Cat# RC200790) using MegaTran 2.0 (Cat# [TT210002]).