

Product datasheet for **RC200780**

ZNF747 (NM_023931) Human Tagged ORF Clone

Product data:

Product Type: Expression Plasmids
Product Name: ZNF747 (NM_023931) Human Tagged ORF Clone
Tag: Myc-DDK
Symbol: ZNF747
Mammalian Cell Selection: Neomycin
Vector: pCMV6-Entry (PS100001)
E. coli Selection: Kanamycin (25 ug/mL)
ORF Nucleotide Sequence: >RC200780 ORF sequence
Red=Cloning site Blue=ORF Green=Tags(s)

TTTTGTAATACGACTCACTATAGGGCGGCCGGAATTCGTCGACTGGATCCGGTACCGAGGAGATCTGCC
GCC**CGATCGCC**

ATGACCGATCCGTCGCTGGGGCTGACAGTCCCCATGGCGCCGCCTCTGGCCCCGCTCCCTCCCCGGGACC
CAAACGGGGCGGGATCCGAGTGGAGAAAGCCCGGGGCCGTGAGCTTCGCCGACGTGGCCGTACTTCTC
CCGGGAGGAGTGGGGCTGCCTGCGGCCCGCGCAGAGGGCCCTGTACCGGGACGTGATCGGGGAGACCTAC
GGCCACCTGGGCGCGCTCGGTGAGAGCCCCACCTGCTTGCCTGGGCCCTGCGCCTCCACAGGCCCTGGCC
CGCCTCTGGGAGCTGCGTGTGGAGTTGGGGGCCCGGGGCCGGCAGGCGCCTCCTCGCAGCCTGGGGT
TTGCGTTCTTCTCCCCAGGAGTCGGAGGCAGCAAGCCGGCGCTCATCTCCTGGGTGGAGGAGAAGGCCG
AACTGTGGGATCCGGCTGCCAGGATCCGGAGGTGGCGAAGTGTCCGACAGAAGCGGACCCAGCAGATTC
CAGAAACAAGGAAGAGGAAAGACAAGGGAAGGGACGGGAGCCCTGGAGAAGCCCGACCCTGTGGCCGCC
GGGTCTCCTGGGC

ACGCGTACGCGGCCGCTCGAGCAGAAACTCATCTCAGAAGAGGATCTGGCAGCAATGATATCCTGGATT
ACAAGGATGACGACGATAAGGTTTAA

Protein Sequence: >RC200780 protein sequence
Red=Cloning site Green=Tags(s)

MTDPSLGLTVPMAAPLAPLPPRDPNGAGSEWRKPGAVSFADVAVYFSREEWGCLRPAQRALYRDVMRETY
GHLGALGESPTCLPGPCASTGPAAPLGAACVGGPGAGQAASSQRGVCVLLPQSEAAARRSSPGWRRRP
NCGIRLPRIRRRWSVRQKRTQQIPETKRKDKGKREPWRSPTLWPPGLLG

TRTRPLEQKLISEEDLAANDILDYKDDDDKV

Chromatograms: https://cdn.origene.com/chromatograms/mk6385_h04.zip



[View online »](#)

Restriction Sites: SgfI-MluI

Cloning Scheme:



ACCN: NM_023931

ORF Size: 573 bp

OTI Disclaimer: The molecular sequence of this clone aligns with the gene accession number as a point of reference only. However, individual transcript sequences of the same gene can differ through naturally occurring variations (e.g. polymorphisms), each with its own valid existence. This clone is substantially in agreement with the reference, but a complete review of all prevailing variants is recommended prior to use. [More info](#)

OTI Annotation: This clone was engineered to express the complete ORF with an expression tag. Expression varies depending on the nature of the gene.

Components: The ORF clone is ion-exchange column purified and shipped in a 2D barcoded Matrix tube containing 10ug of transfection-ready, dried plasmid DNA (reconstitute with 100 ul of water).

- Reconstitution Method:
1. Centrifuge at 5,000xg for 5min.
 2. Carefully open the tube and add 100ul of sterile water to dissolve the DNA.
 3. Close the tube and incubate for 10 minutes at room temperature.
 4. Briefly vortex the tube and then do a quick spin (less than 5000xg) to concentrate the liquid at the bottom.
 5. Store the suspended plasmid at -20°C. The DNA is stable for at least one year from date of shipping when stored at -20°C.

RefSeq: [NM_023931.3](#)

RefSeq Size: 2392 bp

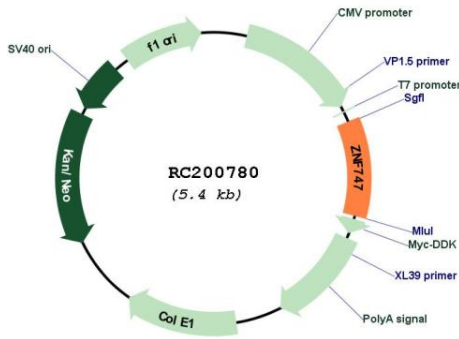
RefSeq ORF: 576 bp

Locus ID: 65988

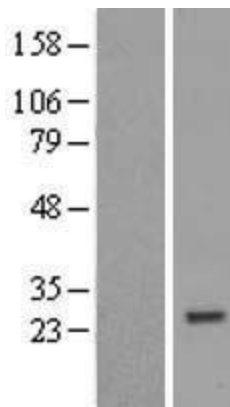
UniProt ID: [Q9BV97](#)

Cytogenetics: 16p11.2
 Domains: KRAB
 Protein Families: Transcription Factors
 MW: 20.6 kDa

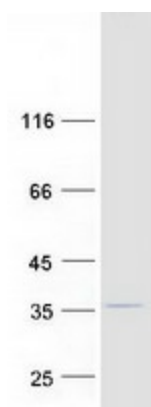
Product images:



Circular map for RC200780



Western blot validation of overexpression lysate (Cat# [LY411436]) using anti-DDK antibody (Cat# [TA50011-100]). Left: Cell lysates from untransfected HEK293T cells; Right: Cell lysates from HEK293T cells transfected with RC200780 using transfection reagent MegaTran 2.0 (Cat# [TT210002]).



Coomassie blue staining of purified ZNF747 protein (Cat# [TP300780]). The protein was produced from HEK293T cells transfected with ZNF747 cDNA clone (Cat# RC200780) using MegaTran 2.0 (Cat# [TT210002]).