

Product datasheet for RC200779

MIIP (NM_021933) Human Tagged ORF Clone

Product data:

Product Type:	Expression Plasmids
Product Name:	MIIP (NM_021933) Human Tagged ORF Clone
Tag:	Myc-DDK
Symbol:	MIIP
Synonyms:	IIP45
Mammalian Cell Selection:	Neomycin
Vector:	pCMV6-Entry (PS100001)
E. coli Selection:	Kanamycin (25 ug/mL)
ORF Nucleotide Sequence:	>RC200779 ORF sequence Red=Cloning site Blue=ORF Green=Tags(s)

TTTTGTAATACGACTCACTATAGGGCGGCCGGAATTCGTCGACTGGATCCGGTACCGAGGAGATCTGCC
GCC**CGATCGCC**

ATGGTGGAGGCTGAGGAAGTGGCACAGCTGCGGCTGCTCAATCTGGAGCTCCTGAGGCAGCTGTGGGTGG
GGCAGGATGCTGTGCGGCGGTCACTGGCCAGGGCAGCCTCGGAGTCAAGCCTGGAATCCAGCAGCAGCTA
CAACTCAGAGACTCCATCGACCCAGAGACGTCCTCAACTTCTTGAGCACCTCTGCCACGGGGCCGG
TCCTCCGTGTGGGGCCACCAGATGCCTGTCGAGGGGACCTCCGTGATGTGGCCAGATCGGGGTGGCT
CTCTCCACCTGCCAATTGCCAGCACCAGGAGTCCCTGGGCCACCGAGACCCCACTCAGCACCTCGCT
GGGCACCTCAAGCCTGAGGGACCCAGAGCCTCAGGGAGGCTGGGTGATCCAGGACCCAGGAGGCACAG
ACCTCGAGGTCCATCCTGGCTCAACAGAGCAAGCTGTCCAAGCCAGGGTACCTTCTCTGAGGAGTCTG
CAGTTCCTGAGAGGAGCTGGCGCCTCAGGCCATACCTGGGCTATGACTGGATTGCAGGGTCTCTGGACAC
CAGCTCTTCCATCACCAGCCAGCCTGAGGCCTTCTTCCAAGCTGCAGGAGTTTCGGGAAACCAACAAG
AGGAGAGTGTATCTGCAGCCATCCTGAACCCAGTTGCCAGGCCTGCGTGAAGCAGTGGCAGCGGCTGG
AGGAAGACCATGAATGCGTGTACTGTTACCGTGTCAACCGGCCTGTTCCCGGTGCCTGTGGATCCCGG
TACCCCTGCCGCTGTGCAGGACACCGGAGACCAGCAGGGCCCTGGGACCTGGCGCAGCCAGCGCAC
GTCAGGGTGAGCATCCCCTGTGATCCTGGAGCCCCGACCCGTACCACATCCACCGGAAAGAGCT
TTGACGCCTCTGACACACTGGCCCTGCCCGGCACTGCCTGTTGGCTGGGACATTTTCTCCGAAAGTC
TGAGAAAAGCTCAGCCCCAGGAACCTGGACCTCTGGTCTCTGTCTCCGCTGAGGCCAGCACCAGAAG
CTGTCCGGCACCAGCAGCCCTTTTACCCGGCCTACCAATGCAGATGCTGCCCCGACCCGACCTGGT
CAGTGCCCGAGTCCCTCGGCCACGTCACCGCAGAAAGCC

ACGGTACGGGGCGCTCGAGCAGAACTCATCTCAGAAGAGGATCTGGCAGCAATGATATCTGGATT
ACAAGGATGACGACGATAAGGTTTAA



[View online >](#)

Protein Sequence: >RC200779 protein sequence
Red=Cloning site Green=Tags(s)

MVEAEELAQLRLNLELLRQLWVGQDAVRRSVARAAESSLESSSSYNSETPSTPETSSTSLSTSCPRGR
 SSVWGPDPACRGDLRDVARSGVASLPPANCQHQESLGRPRPHSAPSLGTSSLRDPEPSGRLGDPGPQEAQ
 TSRSILAQQSKLSKPRVTFSEESAVPERSWRLRPYLGYDWIAGSLDTSSSITSQPEAFFSKLQEFRETNK
 EECICSHPEPQLPGLRESSGSGVEEDHECVYCYRVNRRLLFPVPVDPGTPCRLCRTPRDQQPGTLAQPAH
 VRVSIPLSILEPPHYRHIIHRRKSFSDASDTLALPRHCLLGWDIFPPKSEKSSAPRNLDLWSSVSAEAQHOK
 LSGTSSPFHPASPMQMLPPTPTWSPVQVPRPHVPRQKP

TRTRPLEQKLISEEDLAANDILDYKDDDDKV

Chromatograms: https://cdn.origene.com/chromatograms/mk6150_e12.zip

Restriction Sites: SgfI-MluI

Cloning Scheme:



* The last codon before the Stop codon of the ORF

ACCN: NM_021933

ORF Size: 1164 bp

OTI Disclaimer: The molecular sequence of this clone aligns with the gene accession number as a point of reference only. However, individual transcript sequences of the same gene can differ through naturally occurring variations (e.g. polymorphisms), each with its own valid existence. This clone is substantially in agreement with the reference, but a complete review of all prevailing variants is recommended prior to use. [More info](#)

OTI Annotation: This clone was engineered to express the complete ORF with an expression tag. Expression varies depending on the nature of the gene.

Components: The ORF clone is ion-exchange column purified and shipped in a 2D barcoded Matrix tube containing 10ug of transfection-ready, dried plasmid DNA (reconstitute with 100 ul of water).

Reconstitution Method:

1. Centrifuge at 5,000xg for 5min.
2. Carefully open the tube and add 100ul of sterile water to dissolve the DNA.
3. Close the tube and incubate for 10 minutes at room temperature.
4. Briefly vortex the tube and then do a quick spin (less than 5000xg) to concentrate the liquid at the bottom.
5. Store the suspended plasmid at -20°C. The DNA is stable for at least one year from date of shipping when stored at -20°C.

Note: Plasmids are not sterile. For experiments where strict sterility is required, filtration with 0.22um filter is required.

RefSeq: [NM_021933.4](#)

RefSeq Size: 1801 bp

RefSeq ORF: 1167 bp

Locus ID: 60672

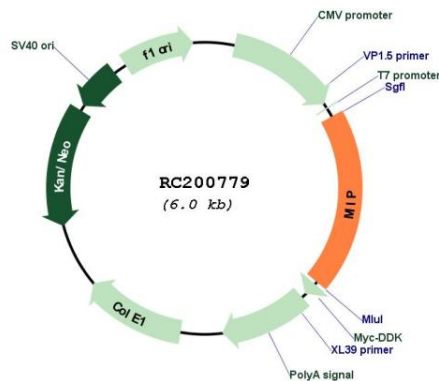
UniProt ID: [Q5JXC2](#)

Cytogenetics: 1p36.22

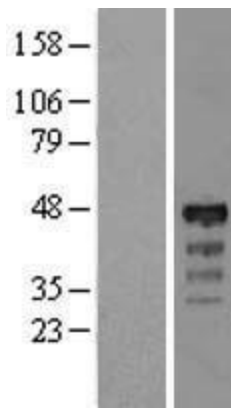
MW: 42.8 kDa

Gene Summary: This gene encodes a protein that interacts with the oncogene protein insulin-like growth factor binding protein 2 and may function as an inhibitor of cell migration and invasion. This protein also interacts with the cell division protein 20 and may be involved in regulating mitotic progression. This protein may function as a tumor suppressor by inhibiting the growth or certain cancers. [provided by RefSeq, Sep 2011]

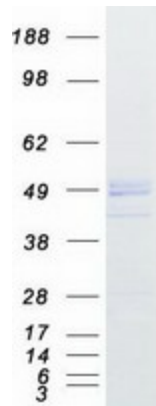
Product images:



Circular map for RC200779



Western blot validation of overexpression lysate (Cat# [LY402887]) using anti-DDK antibody (Cat# [TA50011-100]). Left: Cell lysates from untransfected HEK293T cells; Right: Cell lysates from HEK293T cells transfected with RC200779 using transfection reagent MegaTran 2.0 (Cat# [TT210002]).



Coomassie blue staining of purified MIIP protein (Cat# [TP300779]). The protein was produced from HEK293T cells transfected with MIIP cDNA clone (Cat# RC200779) using MegaTran 2.0 (Cat# [TT210002]).