

Product datasheet for **RC200767**

TSPAN15 (NM_012339) Human Tagged ORF Clone

Product data:

Product Type: Expression Plasmids
Product Name: TSPAN15 (NM_012339) Human Tagged ORF Clone
Tag: Myc-DDK
Symbol: TSPAN15
Synonyms: 2700063A19Rik; NET-7; NET7; TM4SF15
Mammalian Cell Selection: Neomycin
Vector: pCMV6-Entry (PS100001)
E. coli Selection: Kanamycin (25 ug/mL)
ORF Nucleotide Sequence: >RC200767 ORF sequence
Red=Cloning site Blue=ORF Green=Tags(s)

TTTTGTAATACGACTCACTATAGGGCGGCCGGAATTCGTCGACTGGATCCGGTACCGAGGAGATCTGCC
GCC**CGGATCGCC**

ATGCCGCGGGGACTCGGAGCAGGTGCGCTACTGCGCGCTTCTCCTACCTCTGGCTCAAGTTTTAC
TTATCATCTATCCACCGTGTCTGGCTGATTGGGGCCCTGGTCCTGTCTGTGGGCATCTATGCAGAGGT
TGAGCGGCAGAAATATAAACCCCTGAAAGTGCCTTCTGGCTCCAGCCATCATCCTCATCCTCTGGGC
GTCGTCATGTTTCATGGTCTCCTCATTGGTGTGCTGGCGTCCCTCCGTGACAACCTGTACCTTCTCCAAG
CATTTCATGTACATCCTTGGGATCTGCCTCATCATGGAGCTCATTGGTGGCGTGGTGGCCTTGACCTCCG
GAACCAGACCATTGACTTCTGAACGACAACATTCGAAGAGGAATTGAGAATACTATGATGATCTGGAC
TTCAAAAACATCATGGACTTTGTTTCAGAAAAAGTTCAAGTGTGTGGCGGGGAGGACTACCGAGATTGGA
GCAAGAATCAGTACCACGACTGCAGTGCCCTGGACCCCTGGCCTGTGGGGTGCCCTACACCTGCTGCAT
CAGGAACACGACAGAAGTTGTCAACACCATGTGTGGCTACAAAATATCGACAAGGAGCGTTTCAGTGTG
CAGGATGTATCTACGTGCGGGGCTGCACCAACGCCGTGATCATCTGGTTCATGGACAATACACCATCA
TGGCGGGCATCCTCCTGGGCATCCTGCTCCCCAGTTCCTGGGGGTGCTGCTGACGCTGCTGTACATCAC
CCGGGTGGAGGACATCATCATGGAGCACTCTGTCACTGATGGCTCCTTGGGCCCGGTGCCAAGCCACG
GTGGAGCGGCAGGCACGGGATGCTGCTTGTGCTACCCCAAT

**ACGCGTACGCGGGCCTCGAGCAGAAACTCATCTCAGAAGAGGATCTGGCAGCAAATGATATCCTGGATT
ACAAGGATGACGACGATAAGGTTTAA**



[View online »](#)

Protein Sequence: >RC200767 protein sequence
Red=Cloning site Green=Tags(s)

MPRGDSEQVRYCARFSYLWLKFLSLIIYSTVFWLIGALVLSVGIYAEVERQKYKTLES AFLAPAILLLG
VVMFMVSFIGVLASLRDNL YLLQAFMYILGICLIMELIGGVVAL TFRNQITDFLNDNIRRG IENYDDLD
FKNIMDFVQKKFKCCGGEDYRDWSKNQYHDCSAPGPLACGVPTCCIRNTTEVVNTMCGYKTIDKERFSV
QDVIYVRGCTNAVIIWFM DNYTIMAGILLGILLPQFLGVLLTLLYITRVEDIIMEHSVTDGLLGP GAKPS
VEAAGTGCCLCYPN

TRTRPLEQKLISEEDLAANDILDYKDDDDKV

Chromatograms: https://cdn.origene.com/chromatograms/mk6079_d02.zip

Restriction Sites: SgfI-MluI

Cloning Scheme:



ACCN: NM_012339

ORF Size: 882 bp

OTI Disclaimer: The molecular sequence of this clone aligns with the gene accession number as a point of reference only. However, individual transcript sequences of the same gene can differ through naturally occurring variations (e.g. polymorphisms), each with its own valid existence. This clone is substantially in agreement with the reference, but a complete review of all prevailing variants is recommended prior to use. [More info](#)

OTI Annotation: This clone was engineered to express the complete ORF with an expression tag. Expression varies depending on the nature of the gene.

Components: The ORF clone is ion-exchange column purified and shipped in a 2D barcoded Matrix tube containing 10ug of transfection-ready, dried plasmid DNA (reconstitute with 100 ul of water).

Reconstitution Method:

1. Centrifuge at 5,000xg for 5min.
2. Carefully open the tube and add 100ul of sterile water to dissolve the DNA.
3. Close the tube and incubate for 10 minutes at room temperature.
4. Briefly vortex the tube and then do a quick spin (less than 5000xg) to concentrate the liquid at the bottom.
5. Store the suspended plasmid at -20°C. The DNA is stable for at least one year from date of shipping when stored at -20°C.

RefSeq: [NM_012339.5](#)

RefSeq Size: 1726 bp

RefSeq ORF: 885 bp

Locus ID: 23555

UniProt ID: [O95858](#)

Cytogenetics: 10q22.1

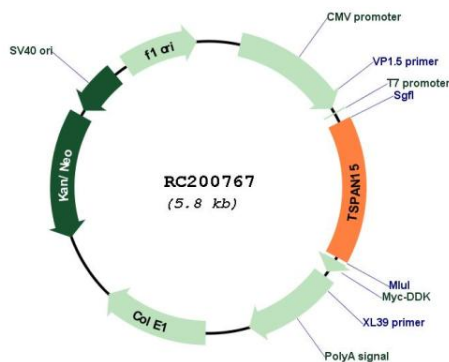
Domains: transmembrane4

Protein Families: Transmembrane

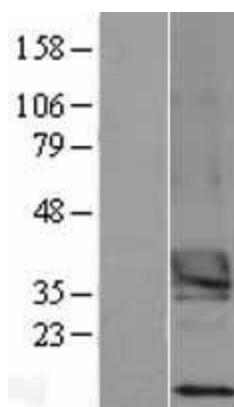
MW: 33.2 kDa

Gene Summary: The protein encoded by this gene is a member of the transmembrane 4 superfamily, also known as the tetraspanin family. Most of these members are cell-surface proteins that are characterized by the presence of four hydrophobic domains. The proteins mediate signal transduction events that play a role in the regulation of cell development, activation, growth and motility. The use of alternate polyadenylation sites has been found for this gene. [provided by RefSeq, Jul 2008]

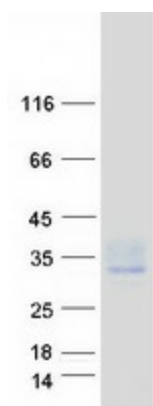
Product images:



Circular map for RC200767



Western blot validation of overexpression lysate (Cat# [LY402201]) using anti-DDK antibody (Cat# [TA50011-100]). Left: Cell lysates from untransfected HEK293T cells; Right: Cell lysates from HEK293T cells transfected with RC200767 using transfection reagent MegaTran 2.0 (Cat# [TT210002]).



Coomassie blue staining of purified TSPAN15 protein (Cat# [TP300767]). The protein was produced from HEK293T cells transfected with TSPAN15 cDNA clone (Cat# RC200767) using MegaTran 2.0 (Cat# [TT210002]).