

Product datasheet for **RC200756**

RNPEP (NM_020216) Human Tagged ORF Clone

Product data:

Product Type:	Expression Plasmids
Product Name:	RNPEP (NM_020216) Human Tagged ORF Clone
Tag:	Myc-DDK
Symbol:	RNPEP
Synonyms:	AP-B; APB
Mammalian Cell Selection:	Neomycin
Vector:	pCMV6-Entry (PS100001)
E. coli Selection:	Kanamycin (25 ug/mL)



[View online »](#)

ORF Nucleotide Sequence:

>RC200756 representing NM_020216
 Red=Cloning site Blue=ORF Green=Tags(s)

TTTTGTAATACGACTCACTATAGGGCGGCCGGGAATTCGTCGACTGGATCCGGTACCGAGGAGATCTGCC
 GCC**CGGATCGCC**

ATGGCGAGCGCGGAGCATTCCCCGGCAGCGCGCGGCCGGCGCGCCGCTGCACTCCGCGCAGGCTGTGG
 ACGTGGCCTCGGCCTCCAACCTCCGGGCCCTTGTAGCTGCTGCACTTGACCTGGACCTGCGGGCTGAGTT
 CGGGCCTCCAGGGCCCGGCGCAGGGAGCCGGGGCTGAGCGGCACCGCGTCTGGACCTGCGCTGCTG
 GAGCCCGAGGGCGCCGCGGAGCTGCGGCTGGACTCGCACCCGTGCTGGAGGTGACGGCGCGCGCTGC
 GGCGGGAGCGGCCGGCTCGGAGGAGCCGCTGCGGAGCCGTGAGCTTCTACACGCAGCCCTTCTCGCA
 CTATGGCCAGGCCCTGTGCGTGTCTTCCCGCAGCCCTGCCGCGCGCCGAGCGCCTCCAGGTGCTGCTC
 ACCTACCGCGTCGGGAGGGACCCGGGTTTGTGTTGGCTCCCAGCAGACAGCAGGAAAGAAGAAGC
 CCTTCGTGTACACCCAGGGCCAGGCTGTCTAAACCGGCCCTTCCCTTGTTCGACACGCTGCTGT
 TAAATACAAGTATTCAGCTCTTATTGAGGTCCCAGATGGCTTACAGCTGTGATGAGTGTAGCACCTGG
 GAGAAGAGAGGTCCAATAAGTTCTTCCAGATGTGTGAGCCATCCCTCCTATCTGATAGCTTTGG
 CCATCGGAGATCTGGTTTCGGCTGAAGTTGGACCCAGGAGCCGGGTGTGGCTGAGCCCTGCCTGATTGA
 TGCTGCCAAGGAGGAGTACAACGGGTGATAGAAGAATTTTGGCAACAGGAGAGAAGCTTTTGGACCT
 TATGTTTGGGAAAGGTATGACTTGTCTTCATGCCACCGTCTTTCCATTTGGAGGAATGGAGAACCCTT
 GTCTGACCTTTGTACCCCTGCCTGCTAGCTGGGACCGCTCCTTGGCAGATGTCATCATCCATGAGAT
 CTCCCACAGTTGGTTTGGAACTGGTCACCAACGCCAACTGGGTGAATTCTGGCTCAATGAAGTTTC
 ACCATGTACGCCAGAGGAGATCTCCACCATCTCTTGGCGCTGCGTACACCTGCTTGGAGGCTGCAA
 CGGGCGGGCTCTGCTGCGTCAACACATGGACATCACTGGAGAGGAAAACCCACTCAACAAGCTCCGCGT
 GAAGATTGAACCGGCGTTGACCCGGACGACACCTATAATGAGACCCCTACGAGAAAGTTTCTGCTTT
 GTCTCATACCTGGCCACTTGGTGGGTGATCAGGATCAGTTTGACAGTTTCTCAAGGCCTATGTGCATG
 AATTCAAATTCGGAAGCATCTTAGCCGATGACTTCTGGACTTCTACTTGAATATTTCCCTGAGCTTAA
 GAAAAAGAGAGTGGATATCATTCCAGGTTTGTAGTTTGTATCGATGGCTGAATACCCCGGCTGGCCCCG
 TACCTCCTGATCTCTCCCTGGGACTCACTCATGAAGCCTGCTGAAGAGCTAGCCAACTGTGGGCAG
 CCGAGGAGCTGGACATGAAGGCCATTGAAGCCGTGGCCATCTCTCCCTGGAAGACCTACCAGCTGGTCTA
 CTTCTGGATAAGATCTCCAGAAATCCCCTCTCCCTCCTGGGAATGTGAAAAAAGCTTGGAGACACATA
 CCAAGTATCTCAAATGCCCGAATGCAGAGCTCCGGCTGCGATGGGGCCAAATCGTCTTAAGAAGCACC
 ACCAGGAAGATTTCTGGAAAGTGAAGGAGTTCTGCATAACCAGGGGAAGCAGAAGTATACACTTCCGCT
 GTACCACGCAATGATGGGTGGCAGTGGGTGGCCAGACCCTCGCCAAGGAGACTTTTGCATCCACCGCC
 TCCAGCTCCACAGCAATGTTGTCAACTATGTCCAGCAGATCGTGGCACCAAGGGCAGT

ACGCGTACGCGGCCGCTCGAGCAGAACTCATCTCAGAAGAGGATCTGGCAGCAATGATATCCTGGATT
 ACAAGGATGACGACGATAAGGTTTAA

Protein Sequence: >RC200756 representing NM_020216
Red=Cloning site Green=Tags(s)

MASGEHSPGSGAARRPLHSAQAVDVASASNFRAFELLHLHLDLRAEFGPPGPGAGSRGLSGTAVLDRCL
 EPEGAAELRLDShPCLEVTAALRRERPGEPPAEPVSFYTQPF SHYQALCVSFPQPCRAAERLQVLL
 TYRVGEGPGVCLAPEQTAGKKKPFVYTQQA VLNRAFFPCFDTPAVKYKYSALIEVPDGF TAVMSASTW
 EKRGPNKFFFQMCQPIPSYLIALAIGDLVSAE VGP RSRVWAEPCLIDAAKEEYNGVIEEFLATGEKLFGP
 YVWGRYDLLFMPPSPFPGGMENPCLTFVTPCLLAGDRSLADVI IHEI SHSWFGNLVTNANWGEFWLNEGF
 TMYAQRRISTILFGAAYTCLEAATGRALLRQHMDITGEENPLNKL RVKIEPGVDPDDTYNETPYEKGFCF
 VSYLAHLVGDQDQFDSFLKAYVHEFKFRSILADDFLD FYLEYFPELKKKRVDIIPGF EFDRLNTPGWPP
 YLPDLSPGD SLMKPAEELAQLWAAEELDMKAI EAVAI SPWKTYQLVYFLDKILQK SPLPPGNVKKLGDY
 PSISNARNAELRLRWGQIVLKN DHQEDFWKVK EFLHNQ GKQKYTLPL YHAMMGSEVAQTLAKETFASTA
 SQLHSNVVNYVQQIVAPKGS

TRTRPLEQKLISEEDLAANDILDYKDDDDKV

Chromatograms: https://cdn.origene.com/chromatograms/mg3777_h01.zip

Restriction Sites: SgfI-MluI

Cloning Scheme:



ACCN: NM_020216

ORF Size: 1950 bp

OTI Disclaimer: The molecular sequence of this clone aligns with the gene accession number as a point of reference only. However, individual transcript sequences of the same gene can differ through naturally occurring variations (e.g. polymorphisms), each with its own valid existence. This clone is substantially in agreement with the reference, but a complete review of all prevailing variants is recommended prior to use. [More info](#)

OTI Annotation: This clone was engineered to express the complete ORF with an expression tag. Expression varies depending on the nature of the gene.

Components: The ORF clone is ion-exchange column purified and shipped in a 2D barcoded Matrix tube containing 10ug of transfection-ready, dried plasmid DNA (reconstitute with 100 ul of water).

Reconstitution Method:

1. Centrifuge at 5,000xg for 5min.
2. Carefully open the tube and add 100ul of sterile water to dissolve the DNA.
3. Close the tube and incubate for 10 minutes at room temperature.
4. Briefly vortex the tube and then do a quick spin (less than 5000xg) to concentrate the liquid at the bottom.
5. Store the suspended plasmid at -20°C. The DNA is stable for at least one year from date of shipping when stored at -20°C.

RefSeq: [NM_020216.3](#), [NP_064601.3](#)

RefSeq Size: 2430 bp

RefSeq ORF: 1953 bp

Locus ID: 6051

UniProt ID: [Q9H4A4](#)

Cytogenetics: 1q32.1

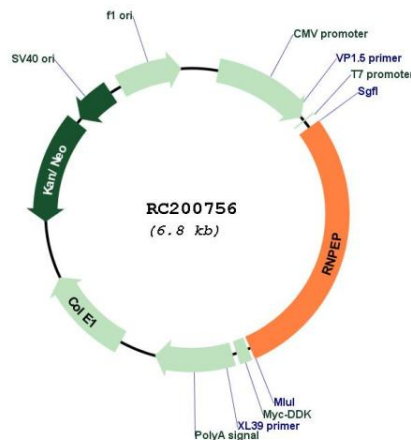
Domains: Peptidase_M1

Protein Families: Druggable Genome, Protease, Secreted Protein

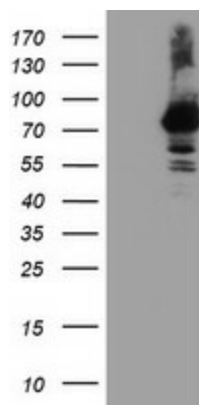
MW: 72.4 kDa

Gene Summary: Exopeptidase which selectively removes arginine and/or lysine residues from the N-terminus of several peptide substrates including Arg(0)-Leu-enkephalin, Arg(0)-Met-enkephalin and Arg(-1)-Lys(0)-somatostatin-14. Can hydrolyze leukotriene A4 (LTA-4) into leukotriene B4 (LTB-4) (By similarity).[UniProtKB/Swiss-Prot Function]

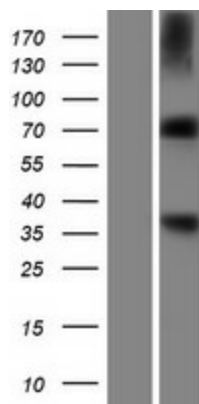
Product images:



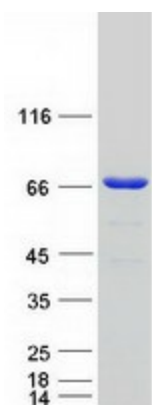
Circular map for RC200756



HEK293T cells were transfected with the pCMV6-ENTRY control (Cat# [PS100001], Left lane) or pCMV6-ENTRY RNPEP (Cat# RC200756, Right lane) cDNA for 48 hrs and lysed. Equivalent amounts of cell lysates (5 ug per lane) were separated by SDS-PAGE and immunoblotted with anti-RNPEP (Cat# [TA503948]). Positive lysates [LY412581] (100ug) and [LC412581] (20ug) can be purchased separately from OriGene.



Western blot validation of overexpression lysate (Cat# [LY412581]) using anti-DDK antibody (Cat# [TA50011-100]). Left: Cell lysates from untransfected HEK293T cells; Right: Cell lysates from HEK293T cells transfected with RC200756 using transfection reagent MegaTran 2.0 (Cat# [TT210002]).



Coomassie blue staining of purified RNPEP protein (Cat# [TP300756]). The protein was produced from HEK293T cells transfected with RNPEP cDNA clone (Cat# RC200756) using MegaTran 2.0 (Cat# [TT210002]).