

Product datasheet for RC200755L3

beta III Tubulin (TUBB3) (NM_006086) Human Tagged Lenti ORF Clone

Product data:

Product Type:	Expression Plasmids
Product Name:	beta III Tubulin (TUBB3) (NM_006086) Human Tagged Lenti ORF Clone
Tag:	Myc-DDK
Symbol:	beta III Tubulin
Synonyms:	beta-4; CDCBM; CDCBM1; CFEOM3; CFEOM3A; FEOM3; TUBB4
Mammalian Cell Selection:	Puromycin
Vector:	pLenti-C-Myc-DDK-P2A-Puro (PS100092)
E. coli Selection:	Chloramphenicol (34 ug/mL)
ORF Nucleotide Sequence:	The ORF insert of this clone is exactly the same as(RC200755).
Restriction Sites:	SgfI-MluI
Cloning Scheme:	

Cloning sites used for ORF Shuttling:



* The last codon before the Stop codon of the ORF.

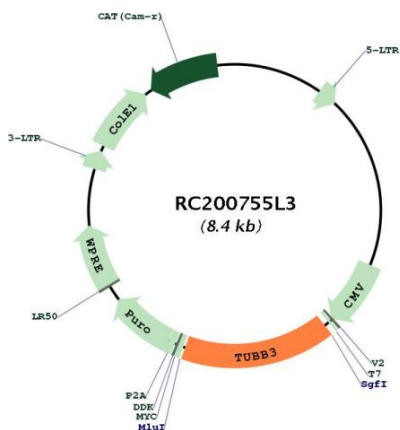
ACCN:	NM_006086
ORF Size:	1350 bp



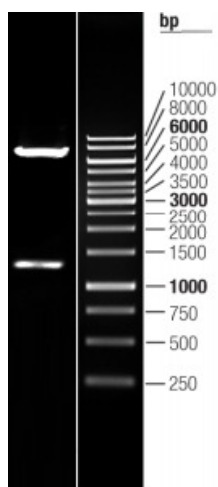
[View online »](#)

OTI Disclaimer:	The molecular sequence of this clone aligns with the gene accession number as a point of reference only. However, individual transcript sequences of the same gene can differ through naturally occurring variations (e.g. polymorphisms), each with its own valid existence. This clone is substantially in agreement with the reference, but a complete review of all prevailing variants is recommended prior to use. More info
OTI Annotation:	This clone was engineered to express the complete ORF with an expression tag. Expression varies depending on the nature of the gene.
Components:	The ORF clone is ion-exchange column purified and shipped in a 2D barcoded Matrix tube containing 10ug of transfection-ready, dried plasmid DNA (reconstitute with 100 ul of water).
Reconstitution Method:	<ol style="list-style-type: none">1. Centrifuge at 5,000xg for 5min.2. Carefully open the tube and add 100ul of sterile water to dissolve the DNA.3. Close the tube and incubate for 10 minutes at room temperature.4. Briefly vortex the tube and then do a quick spin (less than 5000xg) to concentrate the liquid at the bottom.5. Store the suspended plasmid at -20°C. The DNA is stable for at least one year from date of shipping when stored at -20°C.
RefSeq:	NM_006086.2
RefSeq Size:	1794 bp
RefSeq ORF:	1353 bp
Locus ID:	10381
UniProt ID:	Q13509
Cytogenetics:	16q24.3
Domains:	tubulin
Protein Families:	Druggable Genome, ES Cell Differentiation/IPS
Protein Pathways:	Gap junction, Pathogenic Escherichia coli infection
MW:	50.4 kDa
Gene Summary:	This gene encodes a class III member of the beta tubulin protein family. Beta tubulins are one of two core protein families (alpha and beta tubulins) that heterodimerize and assemble to form microtubules. This protein is primarily expressed in neurons and may be involved in neurogenesis and axon guidance and maintenance. Mutations in this gene are the cause of congenital fibrosis of the extraocular muscles type 3. Alternate splicing results in multiple transcript variants. A pseudogene of this gene is found on chromosome 6. [provided by RefSeq, Oct 2010]

Product images:



Circular map for RC200755L3



Double digestion of RC200755L3 using SgfI and MluI