

Product datasheet for **RC200751**

DDX19A (NM_018332) Human Tagged ORF Clone

Product data:

Product Type:	Expression Plasmids
Product Name:	DDX19A (NM_018332) Human Tagged ORF Clone
Tag:	Myc-DDK
Symbol:	DDX19A
Synonyms:	DDX19-DDX19L; DDX19L
Mammalian Cell Selection:	Neomycin
Vector:	pCMV6-Entry (PS100001)
E. coli Selection:	Kanamycin (25 ug/mL)



[View online »](#)

ORF Nucleotide Sequence:

>RC200751 ORF sequence
 Red=Cloning site Blue=ORF Green=Tags(s)

TTTTGTAATACGACTCACTATAGGGCGGCCGGAATTCGTCGACTGGATCCGGTACCGAGGAGATCTGCC
 GCC**CGATCGCC**

ATGGCCACCGACTCGTGGCCCTGGCGGTGGACGAGCAGGAAGCGGCTGTCAAGTCGATGACCAATTTGC
 AGATCAAGGAAGAGAAAAGTCAAAGCAGATACCAATGGTATTATCAAAACAGTACCACTGCCGAGAAAAC
 AGATGAAGAGGAGAAAAGAGGACAGAGCTGCCAGTCCTTACTCAACAAGCTGATCAGAAGCAACCTTGTT
 GATAACACAAAACCAAGTGAAGTCTGCAACGGGATCCAACTCCCTCTGACTCGGTGAAGTCGTTTG
 AAGAGCTTCGGCTGAAACCACAGCTTCTCCAGGGAGTCTATGCCATGGGCTTCAATCGACCTCCAAGAT
 ACAAGAGAACGCATTACCCATGATGCTTGTGCTGAACCCACAGAATCTGATTGCCAGTCTCAGTCTGGC
 ACTGGTAAACAGCTGCCTTTGTCTTAGCCATGCTCAGCCGAGTGGAGCCATCAGACAGATACCCCACT
 GTCTGTGCCTCTCCCAACATATGAGCTGGCGCTTCAAACAGGAAAAGTATTGAGCAGATGGGCAATTT
 TTACCCAGAACTGAAGCTTGCCATGCCGTTTCGAGGCAATAAATTGGAAAGAGGCCAGAAGATCAGTGAG
 CAGATTGTCAATGGCACCCCTGGGACCGTGTGGACTGGTGTCCAAGCTCAAGTTCATTGATCCCAAGA
 AAATCAAGGTGTTTGTCTGGATGAGGCTGATGTCATGATAGCCACTCAGGGCCACCAAGATCAGAGCAT
 CCGCATCCAGAGGATGCTGCCAGGAACTGCCAGATGCTGCTTTTCTCCGCCACCTTTGAAGACTCTGTG
 TGGAAAGTTGCCAGAAAGTGGTCCCAGACCCAAATGTTATCAAAGTGAAGCGTGAGGAAGAGACCTGG
 ATACCATCAAGCAGTACTATGCTCTGTGCAGCAGCAGAGACGAGAAGTTCAGGCCTTGTTAACCTCTA
 CGGGGCCATCACCATTGCTCAAGCCATGATCTTCTGCCATACTCGAAAACAGCTAGTTGGCTGGCAGCA
 GAGCTCTAAAAGAAGGCCACCAGGTGGCTCTGCTGAGTGGGAGATGATGGTGGAGCAGAGGGCTGCGG
 TGATTGAGCGCTTCCGAGAGGGCAAAGAGAAGGTTTTGGTGACCAACGTGTGTGCCCGCGCATTGA
 TGTTGAACAAGTGTCTGCTCATCAACTTTGATCTTCCGTTGGACAAGGACGGGAATCCTGACAATGAG
 ACCTACCTGCACCGGATCGGGCGCACGGCCGCTTTGGCAAGAGGGCCCTGGCAGTGAACATGGTGGACA
 GCAAGCACAGCATGAACATCCTGAACAGAATCCAGGAGCATTTTAATAAGAAGATAGAAAGATTGGACAC
 AGATGATTTGGACGAGATTGAGAAAATAGCCAAC

ACGCGTACGCGGCCGCTCGAGCAGAACTCATCTCAGAAGAGGATCTGGCAGCAATGATATCCTGGATT
 ACAAGGATGACGACGATAAGGTTTAA

Protein Sequence:

>RC200751 protein sequence
 Red=Cloning site Green=Tags(s)

MATDSWALAVDEQEAAVKSMTNLQIKEEKVKADTNGIIKTSTTAEKTDDEEKEDRAAQSLNKLIRSNLV
 DNTNQVEVLQRDPNSPLYSVKSFEELRLKPQLLQGVYAMGFNRPSKIQENALPMMMLAEPQNLIAQSQSG
 TGKTAAFVLAMLSRVEPSDRYPQCLCLSPYELALQTGKVIQMGKFPYELKLAYAVRGNKLERGQKISE
 QIVIGTPGTVLDWCSKLFIDPKKIKVFVLEADVMIATQGHQDQSIRIQRMLPRNCQMLLFSATFEDSV
 WKFAQKVVPDPNVIKLRKEEETLDTIKQYYVLCSSRDEKFAQLCNLYGAIITIAQAMIFCHTRKTASWLA
 ELSKEGHQVALLSGEMMVEQRAAVIERFREGKEKVLVTTNVCARGIDVEQVSVVINFDLPVDKDGNPDNE
 TYLHRIGRTGRFGKRGLAVNMVDSKHSMNILNRIQEHNKIERLDTDDLDEIEKIAN

TRTRPLEQKLISEEDLAANDILDYKDDDDKV

Chromatograms:

https://cdn.origene.com/chromatograms/mk6417_a12.zip

Restriction Sites:

Sgfl-Mlul

Cloning Scheme:


ACCN: NM_018332

ORF Size: 1434 bp

OTI Disclaimer: The molecular sequence of this clone aligns with the gene accession number as a point of reference only. However, individual transcript sequences of the same gene can differ through naturally occurring variations (e.g. polymorphisms), each with its own valid existence. This clone is substantially in agreement with the reference, but a complete review of all prevailing variants is recommended prior to use. [More info](#)

OTI Annotation: This clone was engineered to express the complete ORF with an expression tag. Expression varies depending on the nature of the gene.

Components: The ORF clone is ion-exchange column purified and shipped in a 2D barcoded Matrix tube containing 10ug of transfection-ready, dried plasmid DNA (reconstitute with 100 ul of water).

Reconstitution Method:

1. Centrifuge at 5,000xg for 5min.
2. Carefully open the tube and add 100ul of sterile water to dissolve the DNA.
3. Close the tube and incubate for 10 minutes at room temperature.
4. Briefly vortex the tube and then do a quick spin (less than 5000xg) to concentrate the liquid at the bottom.
5. Store the suspended plasmid at -20°C. The DNA is stable for at least one year from date of shipping when stored at -20°C.

RefSeq: [NM_018332.5](#)

RefSeq Size: 2918 bp

RefSeq ORF: 1437 bp

Locus ID: 55308

UniProt ID: [Q9NUU7](#)

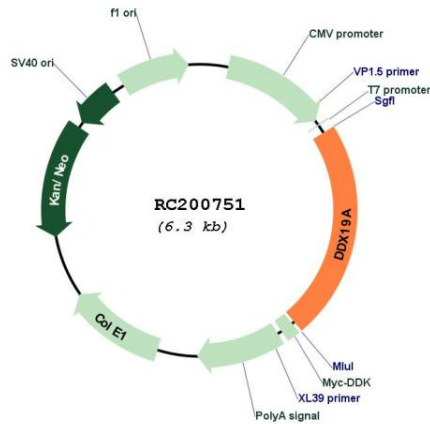
Cytogenetics: 16q22.1

Domains: DEAD, helicase_C

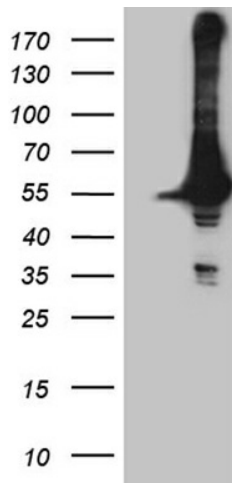
MW: 54 kDa

Gene Summary: ATP-dependent RNA helicase involved in mRNA export from the nucleus. Rather than unwinding RNA duplexes, DDX19 functions as a remodeler of ribonucleoprotein particles, whereby proteins bound to nuclear mRNA are dissociated and replaced by cytoplasmic mRNA binding proteins (By similarity).[UniProtKB/Swiss-Prot Function]

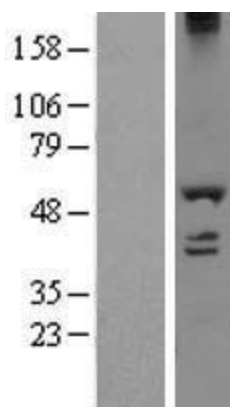
Product images:



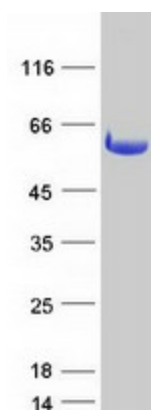
Circular map for RC200751



HEK293T cells were transfected with the pCMV6-ENTRY control (Cat# [PS100001], Left lane) or pCMV6-ENTRY DDX19A (Cat# RC200751, Right lane) cDNA for 48 hrs and lysed. Equivalent amounts of cell lysates (5 ug per lane) were separated by SDS-PAGE and immunoblotted with anti-DDX19A (Cat# [TA809971])(1:2000). Positive lysates [LY413127] (100ug) and [LC413127] (20ug) can be purchased separately from OriGene.



Western blot validation of overexpression lysate (Cat# [LY413127]) using anti-DDK antibody (Cat# [TA50011-100]). Left: Cell lysates from untransfected HEK293T cells; Right: Cell lysates from HEK293T cells transfected with RC200751 using transfection reagent MegaTran 2.0 (Cat# [TT210002]).



Coomassie blue staining of purified DDX19A protein (Cat# [TP300751]). The protein was produced from HEK293T cells transfected with DDX19A cDNA clone (Cat# RC200751) using MegaTran 2.0 (Cat# [TT210002]).