

Product datasheet for **RC200749**

MCG10 (PCBP4) (NM_033008) Human Tagged ORF Clone

Product data:

Product Type:	Expression Plasmids
Product Name:	MCG10 (PCBP4) (NM_033008) Human Tagged ORF Clone
Tag:	Myc-DDK
Symbol:	MCG10
Synonyms:	CBP; LIP4; MCG10
Mammalian Cell Selection:	Neomycin
Vector:	pCMV6-Entry (PS100001)
E. coli Selection:	Kanamycin (25 ug/mL)
ORF Nucleotide Sequence:	>RC200749 ORF sequence Red=Cloning site Blue=ORF Green=Tags(s)

TTTTGTAATACGACTCACTATAGGGCGCCGGGAATTCGTCGACTGGATCCGGTACCGAGGAGATCTGCC
GCC**CGATCGCC**

ATGAGCGGCTCGGACGGGGGACTGGAGGAGGAGCCAGAGCTCAGCATCACCCCTCACGCTGCGGATGCTGA
TGCACGGGAAGGAAGTGGGCAGCATCATCGGAAGAAGGGCGAGACTGTAAGCGAATCCGGGAGCAGAG
CAGTGCCCGGATCACCATCTCCGAGGGCTCCTGCCCTGAACGCATCACCACCATCACCAGGCTACAGCA
GCTGTCTCCATGCAGTCTCCATGATTGCTTTCAAACCTGGATGAGGACCTTTGTGCTGCTCTGCAATG
GTGGAAATGTCTCCAGGCTCCAGTGACCCTGCGCCTTGTATCCCTGCCAGTCAGTGTGGCTCACTGAT
TGGGAAGGCTGGCACCAAGATCAAGGAGATCCGAGAGACTACGGGTGCCAGGTACAGGTGGCAGGGGAC
CTGCTCCCAACTCCACAGAGCGAGCTGTTACGGTATCTGGGGTGCCTGATGCCATCATCTGTGTGTGC
GCCAGATCTGCGCTGTTATCCTGGAGTCCCCACCAAAGGAGCCACTATCCCCTACCATCCGAGCCTCTC
CCTAGGTAAGTCTTCTCTCTGCAACCCAGGGCTTCTCTGTCCAGGGTCAGTATGGGGCTGTGACCCCA
GCTGAGGTCACCAAGCTCCAGCAGCTCTCAAGCCATGCGGTCCCCTTTGCCACACCCAGCGTGGTCCAG
GACTGGATCCCGGCACACAGACCAGCTCACAGGAGTCTTGGTCCCAACGATTTGATTGGCTGTGTGAT
CGGGCGCCAGGGCAGCAAGATCAGCGAGATCCGGCAGATGTCAGGGGCACATATCAAGATCGGGAACCAA
GCAGAGGGCGCTGGGGAGCGGCATGTACCATCACTGGCTCTCCGGTCTCCATCGCCCTGGCCAGTACC
TCATCACTGCCTGTCTAGAGACGGCCAAGTCTACCTCTGGGGGACGCCAGCTCGGCCCCCGCAGACCT
GCCTGCCCCCTTCTCGCCACCCCTGACGGCCCTGCCACAGCTCCCCCTGGCCTGCTGGGCACACCCCTAT
GCCATCTCCCTCTCCAATTCATCGGCCTCAAGCCATGCCCTTCTTGGCTTTACCACCTGCTTCCCAG
GGCCGCCCGGGCTTGGCGGCTACACTGCCAAGATGGCAGCAGCTAATGGGAGCAAGAAGGCTGAGCG
GCAGAAATTCTCCCCTAC

ACGGTACGCGGCCGCTCGAGCAGAAACTCATCTCAGAAGAGGATCTGGCAGCAAATGATATCTGGATT
ACAAGGATGACGACGATAAGGTTTAA



[View online »](#)

Protein Sequence: >RC200749 protein sequence
Red=Cloning site Green=Tags(s)

MSGSDGGLLEEEPELSITLTLRMLMHGKEVGSIIIGKKGETVKRIREQSSARITISEGSCPERITTTITGSTA
 AVFHAVSMIAFKLDEDLCAAPANGGNVSRPPVTLRLVIPASQCGSLIGKAGTKIKEIRETTGAQVQVAGD
 LLPNSTERAVTVSGVPDAIILCVRQICAVILESPPKIGATIPYHPSLSLGTVLLSANQGFVQGYGAVTP
 AEVTKLQQLSSHAVPFATPSVPLDPTGQTSSQEFVLPNDLIGCVIGRQGSKISEIRQMSGAHIKIGNQ
 AEGAGERHVITITGSPVSIALAQYLITACLETAKSTSGGTPSSAPADLPAPFSPPLTALPTAPPGLLGTPT
 AISLSNFIGLKPMPLALPPASPGLAAYTAKMAAANGSKKAERQKFSKY

TRTRPLEQKLISEEDLAANDILDYKDDDDKV

Chromatograms: https://cdn.origene.com/chromatograms/mk6152_d01.zip

Restriction Sites: SgfI-MluI

Cloning Scheme:



* The last codon before the Stop codon of the ORF

ACCN: NM_033008

ORF Size: 1209 bp

OTI Disclaimer: The molecular sequence of this clone aligns with the gene accession number as a point of reference only. However, individual transcript sequences of the same gene can differ through naturally occurring variations (e.g. polymorphisms), each with its own valid existence. This clone is substantially in agreement with the reference, but a complete review of all prevailing variants is recommended prior to use. [More info](#)

OTI Annotation: This clone was engineered to express the complete ORF with an expression tag. Expression varies depending on the nature of the gene.

Components: The ORF clone is ion-exchange column purified and shipped in a 2D barcoded Matrix tube containing 10ug of transfection-ready, dried plasmid DNA (reconstitute with 100 ul of water).

Reconstitution Method:

1. Centrifuge at 5,000xg for 5min.
2. Carefully open the tube and add 100ul of sterile water to dissolve the DNA.
3. Close the tube and incubate for 10 minutes at room temperature.
4. Briefly vortex the tube and then do a quick spin (less than 5000xg) to concentrate the liquid at the bottom.
5. Store the suspended plasmid at -20°C. The DNA is stable for at least one year from date of shipping when stored at -20°C.

RefSeq: [NM_033008.3](#)

RefSeq Size: 2040 bp

RefSeq ORF: 1212 bp

Locus ID: 57060

UniProt ID: [P57723](#)

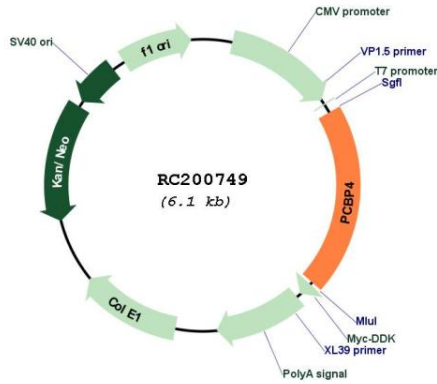
Cytogenetics: 3p21.2

Domains: KH

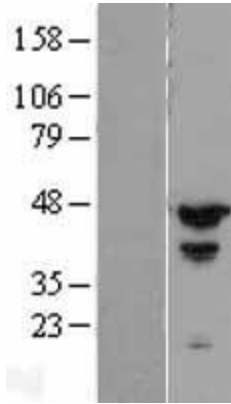
MW: 41.5 kDa

Gene Summary: This gene encodes a member of the KH-domain protein subfamily. Proteins of this subfamily, also referred to as alpha-CPs, bind to RNA with a specificity for C-rich pyrimidine regions. Alpha-CPs play important roles in post-transcriptional activities and have different cellular distributions. This gene is induced by the p53 tumor suppressor, and the encoded protein can suppress cell proliferation by inducing apoptosis and cell cycle arrest in G(2)-M. This gene's protein is found in the cytoplasm, yet it lacks the nuclear localization signals found in other subfamily members. Multiple alternatively spliced transcript variants have been described, but the full-length nature for only some has been determined. [provided by RefSeq, Jul 2008]

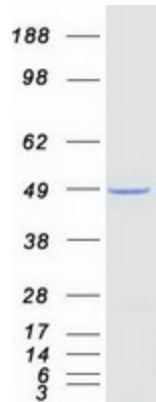
Product images:



Circular map for RC200749



Western blot validation of overexpression lysate (Cat# [LY409760]) using anti-DDK antibody (Cat# [TA50011-100]). Left: Cell lysates from untransfected HEK293T cells; Right: Cell lysates from HEK293T cells transfected with [RC224895] using transfection reagent MegaTran 2.0 (Cat# [TT210002]).



Coomassie blue staining of purified PCBP4 protein (Cat# [TP300749]). The protein was produced from HEK293T cells transfected with PCBP4 cDNA clone (Cat# RC200749) using MegaTran 2.0 (Cat# [TT210002]).