

Product datasheet for RC200748

HSPC150 (UBE2T) (NM_014176) Human Tagged ORF Clone

Product data:

Product Type: Expression Plasmids
Product Name: HSPC150 (UBE2T) (NM_014176) Human Tagged ORF Clone
Tag: Myc-DDK
Symbol: HSPC150
Synonyms: FANCT; HSPC150; PIG50
Mammalian Cell Selection: Neomycin
Vector: pCMV6-Entry (PS100001)
E. coli Selection: Kanamycin (25 ug/mL)
ORF Nucleotide Sequence: >RC200748 ORF sequence
 Red=Cloning site Blue=ORF Green=Tags(s)

TTTTGTAATACGACTCACTATAGGGCGCCGGGAATTCGTCGACTGGATCCGGTACCGAGGAGATCTGCC
 GCC**CGATCGCC**

ATGCAGAGAGCTTACGCTCTGAAGAGAGAGCTGCACATGTTAGCCACAGAGCCACCCCCAGGCATCACAT
 GTTGGCAAGATAAAGACCAAATGGATGACCTGCGAGCTCAAATATTAGGTGGAGCCAACACACCTTATGA
 GAAAGGTGTTTTAAGCTAGAAGTTATCATTCTGAGAGGTACCCATTTGAACCTCTCAGATCCGATTT
 CTCACTCCAATTTATCATCCAAACATTGATTCTGCTGGAAGGATTTGTCTGGATGTTCTCAAATGCCAC
 CAAAAGGTGCTTGAGACCATCCCTCAACATCGCAACTGTGTTGACCTCTATTCAGCTGCTCATGTCAGA
 ACCCAACCCTGATGACCCGCTCATGGCTGACATATCCTCAGAATTTAAATATAATAAGCCAGCCTTCCTC
 AAGAATGCCAGACAGTGGACAGAGAAGCATGCAAGACAGAAAACAAAAGGCTGATGAGGAAGAGATGCTTG
 ATAATCTACCAGAGGCTGGTGAATCCAGAGTACACAACCTCAACACAGAAAAGGAAGGCCAGTCAGCTAGT
 AGGCATAGAAAAGAAATTCATCCTGATGTT

ACGCGTACGCGGCCGCTCGAGCAGAACTCATCTCAGAAGAGGATCTGGCAGCAAATGATATCCTGGATT
 ACAAGGATGACGACGATAAGGTTTAA

Protein Sequence: >RC200748 protein sequence
 Red=Cloning site Green=Tags(s)

MQRASRLKRELHMLATEPPPGITCWQDKDQMDLRAQILGGANTPYEKGVFKLEVIIPERYPFEPPIRF
 LTPYHPNIDSAGRICLDVLLKPPKGAWRPSLNIATVLTSLQLLMSEPNPDDPLMADISSEFKYNKPAFL
 KNARQWTEKHARQKQKADEEEMLDNLPEAGDSRVHNSTQKRKASQLVGLIEKKFHPDV

TRTRPLEQKLISEEDLAANDILDYKDDDDKV



[View online »](#)

Chromatograms: https://cdn.origene.com/chromatograms/mk6078_d01.zip

Restriction Sites: SgfI-MluI

Cloning Scheme:



ACCN: NM_014176

ORF Size: 591 bp

OTI Disclaimer: The molecular sequence of this clone aligns with the gene accession number as a point of reference only. However, individual transcript sequences of the same gene can differ through naturally occurring variations (e.g. polymorphisms), each with its own valid existence. This clone is substantially in agreement with the reference, but a complete review of all prevailing variants is recommended prior to use. [More info](#)

OTI Annotation: This clone was engineered to express the complete ORF with an expression tag. Expression varies depending on the nature of the gene.

Components: The ORF clone is ion-exchange column purified and shipped in a 2D barcoded Matrix tube containing 10ug of transfection-ready, dried plasmid DNA (reconstitute with 100 ul of water).

Reconstitution Method:

1. Centrifuge at 5,000xg for 5min.
2. Carefully open the tube and add 100ul of sterile water to dissolve the DNA.
3. Close the tube and incubate for 10 minutes at room temperature.
4. Briefly vortex the tube and then do a quick spin (less than 5000xg) to concentrate the liquid at the bottom.
5. Store the suspended plasmid at -20°C. The DNA is stable for at least one year from date of shipping when stored at -20°C.

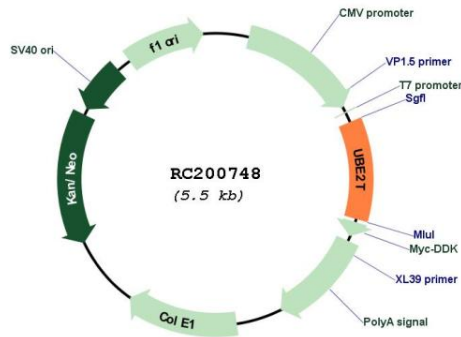
Note: Plasmids are not sterile. For experiments where strict sterility is required, filtration with 0.22um filter is required.

RefSeq: [NM_014176.4](#)

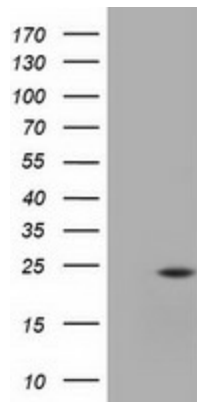
RefSeq Size: 935 bp

RefSeq ORF:	594 bp
Locus ID:	29089
UniProt ID:	<u>Q9NPD8</u>
Cytogenetics:	1q32.1
Domains:	UBCc
Protein Families:	Druggable Genome
MW:	22.5 kDa
Gene Summary:	The protein encoded by this gene catalyzes the covalent attachment of ubiquitin to protein substrates. Defects in this gene have been associated with Fanconi anemia of complementation group T. Two transcript variants encoding different isoforms have been found for this gene. [provided by RefSeq, Jul 2015]

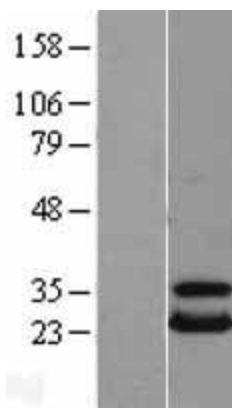
Product images:



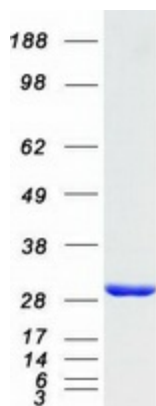
Circular map for RC200748



HEK293T cells were transfected with the pCMV6-ENTRY control (Cat# [PS100001], Left lane) or pCMV6-ENTRY UBE2T (Cat# RC200748, Right lane) cDNA for 48 hrs and lysed. Equivalent amounts of cell lysates (5 ug per lane) were separated by SDS-PAGE and immunoblotted with anti-UBE2T (Cat# [TA501645]). Positive lysates [LY402285] (100ug) and [LC402285] (20ug) can be purchased separately from OriGene.



Western blot validation of overexpression lysate (Cat# [LY402285]) using anti-DDK antibody (Cat# [TA50011-100]). Left: Cell lysates from untransfected HEK293T cells; Right: Cell lysates from HEK293T cells transfected with RC200748 using transfection reagent MegaTran 2.0 (Cat# [TT210002]).



Coomassie blue staining of purified UBE2T protein (Cat# [TP300748]). The protein was produced from HEK293T cells transfected with UBE2T cDNA clone (Cat# RC200748) using MegaTran 2.0 (Cat# [TT210002]).