

Product datasheet for **RC200745**

KCTD14 (NM_023930) Human Tagged ORF Clone

Product data:

Product Type: Expression Plasmids
 Product Name: KCTD14 (NM_023930) Human Tagged ORF Clone
 Tag: Myc-DDK
 Symbol: KCTD14
 Mammalian Cell Selection: Neomycin
 Vector: pCMV6-Entry (PS100001)
 E. coli Selection: Kanamycin (25 ug/mL)
 ORF Nucleotide Sequence: >RC200745 ORF sequence
 Red=Cloning site Blue=ORF Green=Tags(s)

TTTTGTAATACGACTCACTATAGGGCGGCCGGAATTCGTCGACTGGATCCGGTACCGAGGAGATCTGCC
 GCC**CGATCGCC**

ATGTCTACTGTTGTGGAGCTGAACGTGGGGGTGAGTTCCACACCACCACCTGGGTACCCTGAGGAAGT
 TTCCGGGCTCAAAGCTGGCAGAGATGTTCTCTAGCTTAGCCAAGGCCCTCCACGGACGCGGAGGGCCGCTT
 CTTTCATCGACCGCCAGCACCTATTTAGACCCATCCTGGACTACCTGCGCACTGGGCAAGTGCCACA
 CAGCACATCCCTGAAGTGTACCGTGAGGCTCAGTCTACGAAATCAAGCCTTTGGTCAAGCTGTGGAGG
 ACATGCCACAGATCTTTGGTGAGCAGGTGTCTCGGAAGCAGTTTTTGTGCAAGTGCCGGGCTACAGCGA
 GAACCTGGAGCTCATGGTGCGCCTGGCAGTGCAGAAGCCATAACAGCACGGAAGTCCAGCGTGCTGTG
 TGCTGGTGGAAGTGGAGGAGCAGGATGCATATTATTCAGAGGTCTGTGTTTTCTGCAGGATAAGAAGA
 TGTTCAAGTCTGTGCAAGTTTGGGCCCTGGAAGGCGGTCTAGACAACAGCGACCTCATGCACTGCCT
 GGAGATGGACATTAAGGCCAGGGGTACAAGGTATTCTCCAAGTCTACCTGACGTACCCACCAAAAGA
 AACGAATTCATTTAACATTTATTCATTCACCTCACCTGGTGG

ACGCGTACGCGGCCGCTCGAGCAGAACTCATCTCAGAAGAGGATCTGGCAGCAATGATATCCTGGATT
 ACAAGGATGACGACGATAAGGTTTAA

Protein Sequence: >RC200745 protein sequence
 Red=Cloning site Green=Tags(s)

MSTVVELNVGGEFHTTTLGTLRKFPGSKLAEMFSSLAKASTDAEGRFFIDRPSTYFRPILDYLRGTGQVPT
 QHIPEVYREAQFYIEIKPLVKLLEDMPQIFGEQVSRKQFLQVPGYSENLELMVRLARAEAITARKSSVLV
 CLVETEEQDAYYSEVLCFLQDKKMFKSVVKFGPWKAVLDNSDLMHCLEMDIKAQGYKVFYLYPTKR
 NEFHFNISYFTFTWW

TRTRPLEQKLISEEDLAANDILDYKDDDDKV



[View online »](#)

Chromatograms: https://cdn.origene.com/chromatograms/mk6408_b05.zip

Restriction Sites: SgfI-MluI

Cloning Scheme:



ACCN: NM_023930

ORF Size: 675 bp

OTI Disclaimer: The molecular sequence of this clone aligns with the gene accession number as a point of reference only. However, individual transcript sequences of the same gene can differ through naturally occurring variations (e.g. polymorphisms), each with its own valid existence. This clone is substantially in agreement with the reference, but a complete review of all prevailing variants is recommended prior to use. [More info](#)

OTI Annotation: This clone was engineered to express the complete ORF with an expression tag. Expression varies depending on the nature of the gene.

Components: The ORF clone is ion-exchange column purified and shipped in a 2D barcoded Matrix tube containing 10ug of transfection-ready, dried plasmid DNA (reconstitute with 100 ul of water).

Reconstitution Method:

1. Centrifuge at 5,000xg for 5min.
2. Carefully open the tube and add 100ul of sterile water to dissolve the DNA.
3. Close the tube and incubate for 10 minutes at room temperature.
4. Briefly vortex the tube and then do a quick spin (less than 5000xg) to concentrate the liquid at the bottom.
5. Store the suspended plasmid at -20°C. The DNA is stable for at least one year from date of shipping when stored at -20°C.

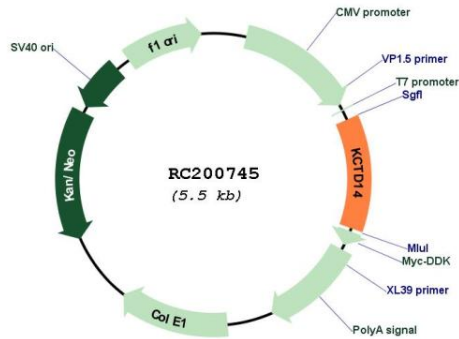
RefSeq: [NM_023930.2](#), [NP_076419.1](#)

RefSeq Size: 1688 bp

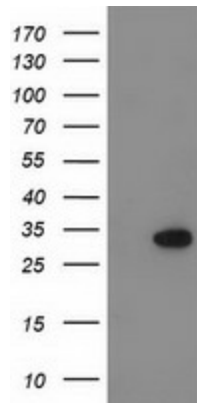
RefSeq ORF: 768 bp

Locus ID: 65987

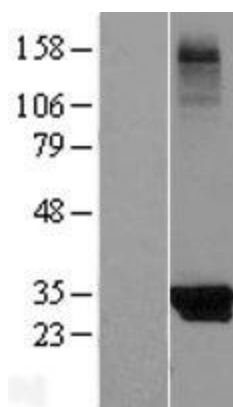
UniProt ID: [Q9BQ13](#)
Cytogenetics: 11q14.1
Domains: BTB, K_tetra
Protein Families: Ion Channels: Other
MW: 26.2 kDa

Product images:


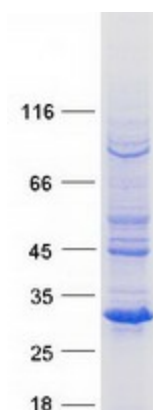
Circular map for RC200745



HEK293T cells were transfected with the pCMV6-ENTRY control (Cat# [PS100001], Left lane) or pCMV6-ENTRY KCTD14 (Cat# RC200745, Right lane) cDNA for 48 hrs and lysed. Equivalent amounts of cell lysates (5 ug per lane) were separated by SDS-PAGE and immunoblotted with anti-KCTD14 (Cat# [TA502534]). Positive lysates [LY411435] (100ug) and [LC411435] (20ug) can be purchased separately from OriGene.



Western blot validation of overexpression lysate (Cat# [LY411435]) using anti-DDK antibody (Cat# [TA50011-100]). Left: Cell lysates from untransfected HEK293T cells; Right: Cell lysates from HEK293T cells transfected with RC200745 using transfection reagent MegaTran 2.0 (Cat# [TT210002]).



Coomassie blue staining of purified KCTD14 protein (Cat# [TP300745]). The protein was produced from HEK293T cells transfected with KCTD14 cDNA clone (Cat# RC200745) using MegaTran 2.0 (Cat# [TT210002]).