

Product datasheet for **RC200743**

ESS2 (NM_022719) Human Tagged ORF Clone

Product data:

Product Type:	Expression Plasmids
Product Name:	ESS2 (NM_022719) Human Tagged ORF Clone
Tag:	Myc-DDK
Symbol:	ESS2
Synonyms:	bis1; DGCR13; DGCR14; DGS-H; DGS-I; DGSH; DGSI; ES2; Es2el; ESS-2
Mammalian Cell Selection:	Neomycin
Vector:	pCMV6-Entry (PS100001)
E. coli Selection:	Kanamycin (25 ug/mL)



[View online »](#)

ORF Nucleotide Sequence:

>RC200743 ORF sequence
 Red=Cloning site Blue=ORF Green=Tags(s)

TTTTGTAATACGACTCACTATAGGGCGGCCGGAATTCGTCGACTGGATCCGGTACCGAGGAGATCTGCC
 GCC**CGGATCGCC**

ATGGAGACGCCGGGCGCATCAGCGTCGCTTGTGTCTCCCGCGCGTCCAGGCCCCCGAGGAAGCGG
 AGGCGGGAGAGGCTGGGGCTGCGACGAGCAAGCAGCGGGTCTGGACGAGGAAGAGTATATCGAGGGCCT
 CCAGACGGTCATCCAAGGGATTCTTTCTGATGTGGAGAAGCTCCAGGCACAGAAAGGAGTACCTGGAA
 GCCGAGGAGAATGGAGACTTGGAAACGGATGCGCCAGATTGCCATCAAGTTTGGCTCTGCCTTGGCAAGA
 TGTCCCGGAGCCCCGCCACCCATGTGACTCCAGCCACATTTGAAACCCCTGAGGTGCATGCAGGCAC
 TGGAGTGGTGGGCAACAAGCCCAGGCCCGCGGCCGAGGCTGGAGGATGGAGAGGCTGGAGAGGAGGAG
 GAGAAGGAGCCGCTGCCAGCCTAGATGTCTTCTGAGCCGCTACACGAGTGAGGACAATGCCTCCTTCC
 AGGAGATCATGGAGGTGGCAAGGAGAGAAGCCGGGCACGCCACGCTTGGCTCTACCAGGCTGAGGAAGA
 GTTTGAGAAGAGGCAGAAAGATAATCTCGAACTCCCGTCAGCAGAGCACCAGGCCATCGAGAGCAGCCAG
 GCCAGTGTGGAGACCTGGAAGTACAAGGCCAAGAATCCCTCATGTACTATCCAGAGGGTGTCCCTGACG
 AGGAGCAGCTGTTTAAGAAGCCCCGGCAGGTGGTACATAAGAACACGCGCTTCTTAGGGACCCCTTCAG
 CCAAGCCCTGAGCAGGTGCCAGCTCCAGCAGGCAGCCGCCCTCAATGCCAGCACAAACAGGGCAAGGTG
 GGCCCCGATGGCAAGGAGCTGATCCCCAGGAGTCCCCTCGAGTGGGTGGATTTGGATTTGTTGCCACTC
 CTTCCCCTGCCCTGGTGTGAACGAGTCCCCGATGATGACCTGGGGGGAGGTTGAGAACACACCCCTTGAG
 AGTTGAAGGTCGAAACGCCCTACGTGGACAGGACACCCGGCCAGCTTTAAGATCCTGGAGCCAGGC
 CGCAGGGAGCGGCTGGTCTGAAGATGGCAACGAGGCCGCTGCCAAGAACCAGGGCAAGAAGCAGGAAG
 CCTTGGCAGAGTGACGGAGAATCTGGCCAGCCTCACCCCAAAGGCCTGAGCCAGCCATGTCGCCACCA
 CCTACAGCGCCTTGTGAGCAGGACGGCCAGCAAGTACACAGACCCGGCCCTGCGGGCCAGCTACACACCA
 TCCCCAGCAGCTCCACCCACCTCAAGACCCCGGCCAGTGGGCTGCAGACCCCAAGCACACCCGGCGC
 CTGGCTCTGCCACACGCACCCCTCTCACACAGGACCCGGCCTCCATCACGGACAACCTGCTGCAGCTCC
 TGCCCGGCGCAAAGCTTCGGACTCTTT

ACGCGTACGCGGCCGCTCGAGCAGAAACTCATCTCAGAAGAGGATCTGGCAGCAAATGATATCCTGGATT
 ACAAGGATGACGACGATAAGGTTTAA

Protein Sequence:

>RC200743 protein sequence
 Red=Cloning site Green=Tags(s)

METPGASASSLLLPAASRPPRKREAGEAGAATSKQRVLDDEEYIEGLQTVIQRDFFPDVEKLQAQKEYLE
 AEENGLERMQRQIAIKFGSALGKMSREPPPPYVTPATFETPEVHAGTGTVGNKPRPRGRLEDGEAGEEE
 EKEPLPSLDVFLSRYTSEDNASFQEIMEVAKERSRARHAWLYQAEFEKRRQKDNLELPSAEHQAISSQ
 ASVETWKYKAKNSLMYYPEGVPEEQLFKKPRQVVKHNRFLRDPFSQALSRCQLQQAALNAQHKQGV
 GPDGKELIPQESPRVGGFVATPSPAPGVNESPMMTWGEVENTPLRVEGSETPYVDRTPGPAFKILEPG
 RRERLGLKMANEAAAKNRKKQEALRRVTENLASLTPKGLSPAMSPALQRLVSRTASKYTDRALRASYP
 SPARSTHLKTPASGLQTPSTPAPGSATRPLTQDPASITDNLQLPARRKASDF

TRTRPLEQKLISEEDLAANDILDYKDDDDKV

Chromatograms:

https://cdn.origene.com/chromatograms/mk6668_f12.zip

Restriction Sites:

Sgfl-Mlul

Cloning Scheme:

Cloning sites used for ORF Shutting:



* The last codon before the Stop codon of the ORF

ACCN: NM_022719

ORF Size: 1428 bp

OTI Disclaimer: The molecular sequence of this clone aligns with the gene accession number as a point of reference only. However, individual transcript sequences of the same gene can differ through naturally occurring variations (e.g. polymorphisms), each with its own valid existence. This clone is substantially in agreement with the reference, but a complete review of all prevailing variants is recommended prior to use. [More info](#)
OTI Annotation: This clone was engineered to express the complete ORF with an expression tag. Expression varies depending on the nature of the gene.

Components: The ORF clone is ion-exchange column purified and shipped in a 2D barcoded Matrix tube containing 10ug of transfection-ready, dried plasmid DNA (reconstitute with 100 ul of water).

Reconstitution Method:

1. Centrifuge at 5,000xg for 5min.
2. Carefully open the tube and add 100ul of sterile water to dissolve the DNA.
3. Close the tube and incubate for 10 minutes at room temperature.
4. Briefly vortex the tube and then do a quick spin (less than 5000xg) to concentrate the liquid at the bottom.
5. Store the suspended plasmid at -20°C. The DNA is stable for at least one year from date of shipping when stored at -20°C.

RefSeq: [NM_022719.3](#)
RefSeq Size: 5405 bp

RefSeq ORF: 1431 bp

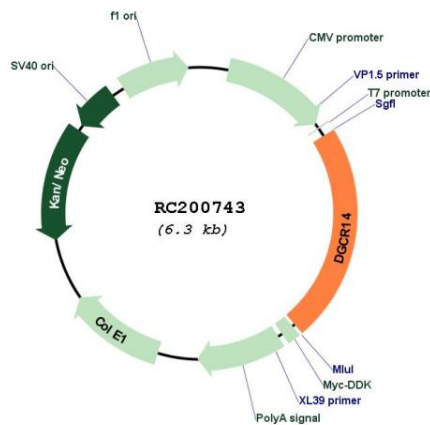
Locus ID: 8220

UniProt ID: [Q96DF8](#)
Cytogenetics: 22q11.2

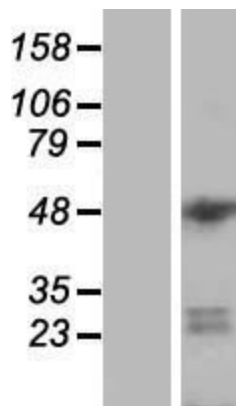
MW: 52.6 kDa

Gene Summary: This gene is located within the minimal DGS critical region (MDGCR) thought to contain the gene(s) responsible for a group of developmental disorders. These disorders include DiGeorge syndrome, velocardiofacial syndrome, conotruncal anomaly face syndrome, and some familial or sporadic conotruncal cardiac defects which have been associated with microdeletion of 22q11.2. The encoded protein may be a component of C complex spliceosomes, and the orthologous protein in the mouse localizes to the nucleus. Alternatively spliced transcript variants have been found for this gene. [provided by RefSeq, Dec 2015]

Product images:



Circular map for RC200743



Western blot validation of overexpression lysate (Cat# [LY411609]) using anti-DDK antibody (Cat# [TA50011-100]). Left: Cell lysates from untransfected HEK293T cells; Right: Cell lysates from HEK293T cells transfected with RC200743 using transfection reagent MegaTran 2.0 (Cat# [TT210002]).