

Product datasheet for **RC200742**

COG1 (NM_018714) Human Tagged ORF Clone

Product data:

Product Type:	Expression Plasmids
Product Name:	COG1 (NM_018714) Human Tagged ORF Clone
Tag:	Myc-DDK
Symbol:	COG1
Synonyms:	CDG2G; LDLB
Mammalian Cell Selection:	Neomycin
Vector:	pCMV6-Entry (PS100001)
E. coli Selection:	Kanamycin (25 ug/mL)



[View online »](#)

ORF Nucleotide Sequence:

>RC200742 representing NM_018714
 Red=Cloning site Blue=ORF Green=Tags(s)

TTTTGTAATACGACTCACTATAGGGCGGCCGGAATTCGTCGACTGGATCCGGTACCGAGGAGATCTGCC
 GCC**CGGATCGCC**

ATGGCCACCGCGCAACCTCACCCGCGCTGAAGCGGCTGGATCTGCGCGACCCTGCGGCTCTTTTCGAGA
 CGCATGGAGCGGAGGAGATCCGCGGGCTGGAGCGCCAGGTTCTGGGCCGAGATCGAGCACAAGAAGGAGGA
 GCTGCGGCAGATGGTGGCGAACGGTACC GCGACCTGATCGAGGCGGCCACACCATCGGCCAGATGCGC
 CGCTGCGCCGTGGGGCTAGTGGACGCCGTGAAGGCCACCGACCAGTACTGCGCCCGCCTCCGCCAGGCCG
 GCTCGGCCCGCCCCGGCCACCGCGGGCCAGCAGCCACAGCAGCCATCCAGGAGAAGTTCTACAGCAT
 GGCTGCCCAGATCAAGCTACTCTTAGAAATCCGGAGAAGATCTGGAGCTCGATGGAAGCCTCTCAGTGT
 CTCACGCCACACAGCTTACCTGCTCTGCTGCCACCTCCACAGCCTGCTCCAGTGGATTCTTCTAGTT
 CCCGATACAGTCCCGTCTCTCCGGTTTCTATACTCATCCGGCAGGTGGCAGCCGCCAGCCACTTCCG
 GTCAACTATTCTGCATGAAAGCAAGATGTTGCTCAAATGCCAAGGTGTGTCTGACCAAGCTGTGGCCGAG
 GCCTGTGCTCTATAATGCTCTTAGAAGAGAGTTCTCCTCGCAAAGCCCTCACAGACTTCCTGTGGCCA
 GAAAGGCAACTATTCAGAACTTCTCAACCAGCCACACCATGGTGTGGTATCAAGGCTCAGATTTGCTC
 ATTAGTGGAGTTGCTGGCCACCACTCTGAAGCAAGCTCATGCCCTTTTCTACACTTTGCCAGAAGGACTG
 CTGCCAGATCCAGCCCTGCCATGTGGCTTGTCTCTACTCTGGAGACCATCACAGGCCAGCATCCTG
 CCGAAAGGGCACTGGTGTCTCGCAGGAAGAGATGAAACTCTGCAGCTGGTTAAACACCTGCCAGCATC
 CATCGTCGAGTTCCAGCCAACACTCCGAACCTTGACATCCCATCAGTCAGGAATACCTGAAAGACAGC
 CTGCAGAAATGGATCCACATGTGTAATGAAGACATTAATAATGGGATCACCACCTGCTCATGTACGTGA
 AGAGCATGAAGGGTCTCGCGGGAATCCGGGACGCCATGTGGGAGTTACTTACCAATGATCCACCAATCA
 CAGCTGGGATGTGCTATGTGCGCGGCTTCTGGAGAAGCCGCTTGTGTTCTGGGAAGATATGATGCAGCAA
 CTGTTCTTGACCGATTACAGACTCTGACAAAAGAAGGCTTTGACTCCATCTCCAGTAGCTCCAAGGAGC
 TCTTGGTTTCAGCTTTCAGGAACCTGAAAGCAGCACCAGCAACTCCCCTTCAAATAAGCACATCCACTT
 TGAGTACAACATGTCGCTCTTCTCTGGTCTGAGAGTCTAATGACCTGCCTTCCGATGCGGCCTGGGTC
 AGCGTGGCAAACCGGGTCAGTTTGCCAGTAGCGGCTCTCCATGAAAGCACAAGCCATCAGCCCTTGTG
 TACAGAACTTCTGTTCTGCCCTGGATTCTAAGCTGAAGGTTAACTAGATGACCTCCTGGCTTACCTCCC
 CTCTGATGACTCATCACTGCCAAGGACGTTTCTCCACACAGGCCAAGAGTTCTGCCTTTGACAGATAC
 GCAGATGCGGGGACCGTGCAGGAGATGCTGCGGACTCAGTCCGTGGCATGCATCAAGCACATCGTGGACT
 GCATCCGGGCAGAGCTACAGAGCATTGAAGAGGGTGTGCAAGGGCAACAGGATGCCCTCAACAGTGCCAA
 GCTGCACTCAGTTCTTTTCATGGCCAGACTCTGCCAGTCCCTGGGAGAGCTGTGCCCCATCTGAAGCAG
 TGCATCCTGGGAAAATCAGAGAGCTCAGAGAAACCAGCAAGGGAGTTTAGGGCTCTGAGAAAACAGGGAA
 AGGTGAAAACCTCAGGAAATCATTCTACACAGGCCAAGTGGCAAGAGGTTAAAGAAGTACTCCTCCAGCA
 GAGCGTATGGGCTACCAGGTCTGGAGCAGTGCAGTTGTGAAAGTTTTGATTTCATGGATTCACCCAGTCA
 TTACTTCTAGATGATGCTGGCTCAGTTCTGGCCACAGCCACCAGCTGGGATGAGCTAGAAATTCAGGAGG
 AGGCAGAGTCTGGCAGCAGTGTACATCCAAGATCCGACTCCCTGCACAGCCGCTCCTGGTATGTACAGTC
 CTTCTGTTTAGTTTATGCCAGGAAATTAATCGGGTTGGAGGCCATGCCTTGCCAAAGGTGACATTACAG
 GAGATGCTGAAAAGCTGTATGGTTCAAGTAGTAGCTGCCTATGAGAAACTCTCCGAAGAAAACAGATTA
 AGAAAGAAGTGCATTTCCAGTCAACCAGAACCGGGCGCTGCAGTGTCTTATGATCTGCGTTACCTCAA
 CATTGTTCTGACAGCCAAGGTTGACGAGGTGAAGAGTGGCCGGAGCAAGCCAGACTCCAGAATTGAGAAA
 GTGACTGACCACCTGGAAGCCCTCATTGATCCATTTGACCTGGACGTTTTTACGCCACACCTCAACAGCA
 ACCTTCATCGCTGGTGCAGCGAACTTCTGTTCTGTTGGATTGGTACTGGTACAGAGAATCAGCTCGC
 CCCCCGGAGCAGTACGTTCAACTCCAAGAACCCATAACATCCTGCCACTGGCATCCAGTCAGATCAGG
 TTTGGACTTCTCCACTGAGCATGACAAGCACTCGAAAGGCTAAATCAACCAGAAACATCGAAACAAAAG
 CTCAGGTTGTCCCCCGGCACGCTCCACAGCTGGTGACCCGACAGTTCTGGCTCCTTGTTCAGACAGCT
 GTGTCAGTGAAGAAGACAACAGTCTGCACCTTCATTATTCAAACTGGCTGGCTCTCTAGTATGACTAAG

ACGCGTACGCGGCCGCTCGAGCAGAACTCATCTCAGAAGAGGATCTGGCAGCAAATGATATCCTGGATT
 ACAAGGATGACGACGATAAGGTTTAA

Protein Sequence: >RC200742 representing NM_018714
Red=Cloning site Green=Tags(s)

MATAATSPALKRDLRDPAAFETHGAEEIRGLERQVRAEIEHKKEELRQMVGERYRDLIEAADTIGQMR
 RCAVGLVDAVKATDQYCARLRQAGSAAPRPPRAQQPQQPSQEKFYSMAAQIKLLLEIPEKIWSSMEASQC
 LHATQLYLLCCHLHSLQLDSSSSRYSPVLSRFPILIRQVAAASHFRSTILHESKMLLKCGVSDQAVAE
 ALCSIMLLEESSPRQALTDPELLARKATIQKLLNQPHHGAGIKAQICSLVELLATTLKQAHALFYTLPEGL
 LPDPALPCGLLFSTLETITGQHPAGKGTGVLQEEMKLCSWFKHLPASIVEFQPTLRTLAHPISQEYLKDT
 LQKWIHMCNEDIKNGITNLLMYVKSMKGLAGIRDAMWELLTNESTNHSWDVLCRRLLEKPLLFWEDMMQQ
 LFLDRLQTLTKEGFDSISSSSKELLVSALQELESSTSNSPSNKHIFEYNMSLFLWSESPNDLPSDAAWV
 SVANRQGFASSGLSMKAQAISPCVQNFCSALDSKLVKLDLLAYLPSDDSSLPKDVSPQAKSSAFDRY
 ADAGTVQEMLRQSVACIKHIVDCIRAEQSIEEGVQGGQDALNSAKLHSLVFMARLCQSLGELCPHLKQ
 CILGKSESSEKPARFRALRKQGVKTEIIPQAKWQEVKEVLLQQSVMGYQVWSSAVVKVLIHGFTQS
 LLLDDAGSVLATATSWDELEIQEEAESGSSVTSKIRLPAQPSWYVQSFLFSLCQEIINRVGGHALPKVTLQ
 EMLKSCMVQVVAAYEKLSEEKQIKKEGAFVPTQNRALQLLYDLRYLNIVLTAKGDEVKSGRSKPDSRIEK
 VTDHLEALIDPFDLVFPHLNSNLHRLVQRTSVLFGVTGTENQLAPRSSTFNSQEPHNILPLASSQIR
 FGLLPLSMTSTRKAKSTRNIETKAQVPPARSTAGDPTVPGSLFRQLVSEEDNTSAPSLFKLGLWSSMTK

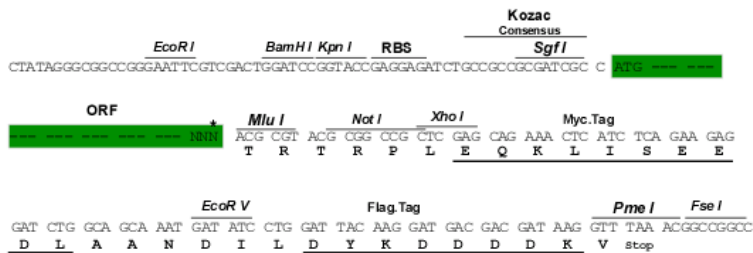
TRTRPLEQKLISEEDLAANDILDYKDDDDKV

Chromatograms: https://cdn.origene.com/chromatograms/mg3036_e08.zip

Restriction Sites: SgfI-MluI

Cloning Scheme:

Cloning sites used for ORF Shuttling:



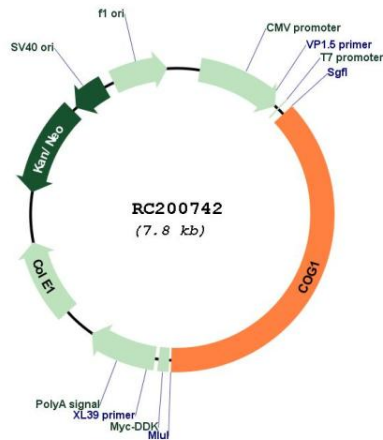
* The last codon before the Stop codon of the ORF

ACCN: NM_018714

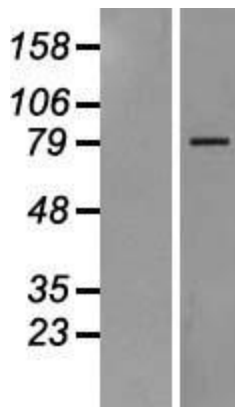
ORF Size: 2940 bp

OTI Disclaimer:	The molecular sequence of this clone aligns with the gene accession number as a point of reference only. However, individual transcript sequences of the same gene can differ through naturally occurring variations (e.g. polymorphisms), each with its own valid existence. This clone is substantially in agreement with the reference, but a complete review of all prevailing variants is recommended prior to use. More info
OTI Annotation:	This clone was engineered to express the complete ORF with an expression tag. Expression varies depending on the nature of the gene.
Components:	The ORF clone is ion-exchange column purified and shipped in a 2D barcoded Matrix tube containing 10ug of transfection-ready, dried plasmid DNA (reconstitute with 100 ul of water).
Reconstitution Method:	<ol style="list-style-type: none">1. Centrifuge at 5,000xg for 5min.2. Carefully open the tube and add 100ul of sterile water to dissolve the DNA.3. Close the tube and incubate for 10 minutes at room temperature.4. Briefly vortex the tube and then do a quick spin (less than 5000xg) to concentrate the liquid at the bottom.5. Store the suspended plasmid at -20°C. The DNA is stable for at least one year from date of shipping when stored at -20°C.
RefSeq:	NM_018714.3
RefSeq Size:	3035 bp
RefSeq ORF:	2943 bp
Locus ID:	9382
UniProt ID:	Q8WTW3
Cytogenetics:	17q25.1
Protein Families:	Druggable Genome
MW:	108.8 kDa
Gene Summary:	The protein encoded by this gene is one of eight proteins (Cog1-8) which form a Golgi-localized complex (COG) required for normal Golgi morphology and function. It is thought that this protein is required for steps in the normal medial and trans Golgi-associated processing of glycoconjugates and plays a role in the organization of the Golgi-localized complex. [provided by RefSeq, Jul 2008]

Product images:



Circular map for RC200742



Western blot validation of overexpression lysate (Cat# [LY412887]) using anti-DDK antibody (Cat# [TA50011-100]). Left: Cell lysates from untransfected HEK293T cells; Right: Cell lysates from HEK293T cells transfected with RC200742 using transfection reagent MegaTran 2.0 (Cat# [TT210002]).