

## Product datasheet for **RC200733**

### EEF1B2 (NM\_021121) Human Tagged ORF Clone

#### Product data:

Product Type:	Expression Plasmids
Product Name:	EEF1B2 (NM_021121) Human Tagged ORF Clone
Tag:	Myc-DDK
Symbol:	EEF1B2
Synonyms:	EEF1B; EEF1B1; EF1B
Mammalian Cell Selection:	Neomycin
Vector:	pCMV6-Entry (PS100001)
E. coli Selection:	Kanamycin (25 ug/mL)
ORF Nucleotide Sequence:	>RC200733 ORF sequence Red=Cloning site Blue=ORF Green=Tags(s)

TTTTGTAATACGACTCACTATAGGGCGGCCGGAATTCGTCGACTGGATCCGGTACCGAGGAGATCTGCC  
GCC**CGATCGCC**

ATGGGTTTCGGAGACCTGAAAAGCCCTGCCGGCCTCCAGGTGCTCAACGATTACCTGGCGGACAAGAGCT  
ACATCGAGGGGTATGTGCCATCACAAGCAGATGTGGCAGTATTTGAAGCCGTGTCCAGCCCACCGCCTGC  
CGACTTGTGTCATGCCCTACGTTGGTATAATCACATCAAGTCTTACGAAAAGGAAAAGGCCAGCCTGCCA  
GGAGTGAAGAAAGCTTTGGGCAAAATATGGTCTGCCGATGTGGAAGACACTACAGGAAGTGGAGCTACAG  
ATAGTAAAGATGATGATGACATTGACCTCTTTGGATCTGATGATGAGGAGGAAAGTGAAGAAGCAAAGAG  
GCTAAGGGAAGAACGTCTTGACAATATGAATCAAAGAAAGCCAAAAACCTGCACCTTGTGCAAGTCT  
TCCATCTTACTAGATGTGAAACCTTGGGATGATGAGACAGATATGGCGAAATTAGAGGAGTGCCTCAGAA  
GCATTC AAGCAGACGGCTTAGTCTGGGGCTCATCTAACTAGTCCAGTGGGATACGGAATTAAGAACT  
TCAAATACAGTGTGTAGTTGAAGATGATAAAGTTGGAACAGATATGCTGGAGGAGCAGATCACTGCTTTT  
GAGGACTATGTGCAGTCCATGGATGTGGCTGCTTTCAACAAGATC

**ACGCGT**ACGCGGGCCGCTCGAGCAGAAACTCATCTCAGAAGAGGATCTGGCAGCAAATGATATCCTGGATT  
ACAAGGATGACGACGATAAGGTTTAA



[View online »](#)

**Protein Sequence:** >RC200733 protein sequence  
Red=Cloning site Green=Tags(s)

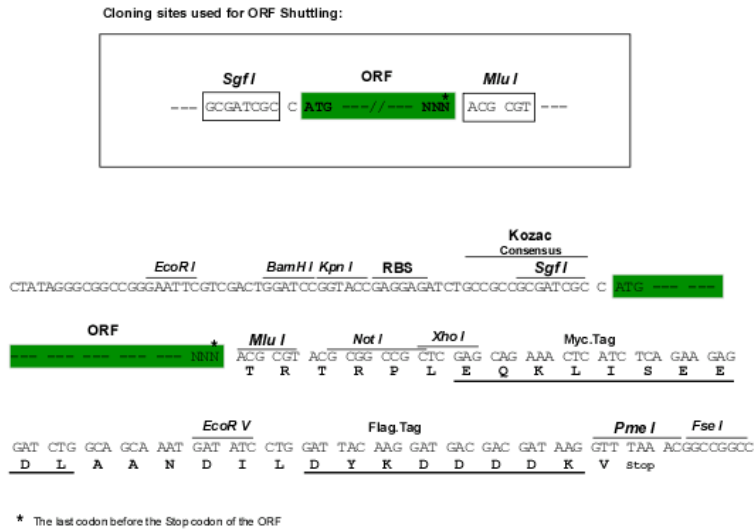
MGFGDLKSPAGLQVLNDYLADKSYIEGYVPSQADVAVFEAVSSPPADLCHALRWYNHIKSYEKEKASLP  
 GVKKALGKYGPADVEDTTGSGATDSKDDDDIDLFGSDDEEESSEAKRLREERLAQYESKKAKKPALVAKS  
 SILLDVKPWDDETDMAKLEECVRSIQADGLVWSSKLVVPGYGIKKLQIQCVVEDDKVGTMDLLEEQITAF  
 EDYVQSMDVAAFNKI

TRTRPLEQKLISEEDLAANDILDYKDDDDKV

**Chromatograms:** [https://cdn.origene.com/chromatograms/mk6398\\_c07.zip](https://cdn.origene.com/chromatograms/mk6398_c07.zip)

**Restriction Sites:** SgfI-MluI

**Cloning Scheme:**



**ACCN:** NM\_021121

**ORF Size:** 675 bp

**OTI Disclaimer:** The molecular sequence of this clone aligns with the gene accession number as a point of reference only. However, individual transcript sequences of the same gene can differ through naturally occurring variations (e.g. polymorphisms), each with its own valid existence. This clone is substantially in agreement with the reference, but a complete review of all prevailing variants is recommended prior to use. [More info](#)

**OTI Annotation:** This clone was engineered to express the complete ORF with an expression tag. Expression varies depending on the nature of the gene.

**Components:** The ORF clone is ion-exchange column purified and shipped in a 2D barcoded Matrix tube containing 10ug of transfection-ready, dried plasmid DNA (reconstitute with 100 ul of water).

**Reconstitution Method:**

1. Centrifuge at 5,000xg for 5min.
2. Carefully open the tube and add 100ul of sterile water to dissolve the DNA.
3. Close the tube and incubate for 10 minutes at room temperature.
4. Briefly vortex the tube and then do a quick spin (less than 5000xg) to concentrate the liquid at the bottom.
5. Store the suspended plasmid at -20°C. The DNA is stable for at least one year from date of shipping when stored at -20°C.

**RefSeq:** [NM\\_021121.3](#), [NP\\_066944.1](#)

**RefSeq Size:** 854 bp

**RefSeq ORF:** 678 bp

**Locus ID:** 1933

**UniProt ID:** [P24534](#)

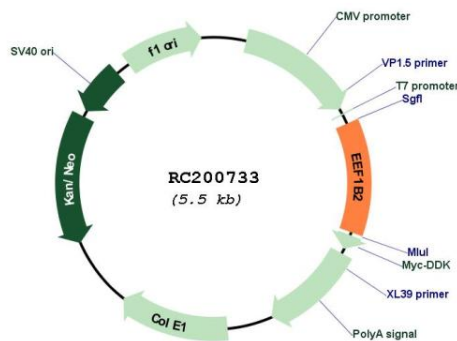
**Cytogenetics:** 2q33.3

**Domains:** EF1BD

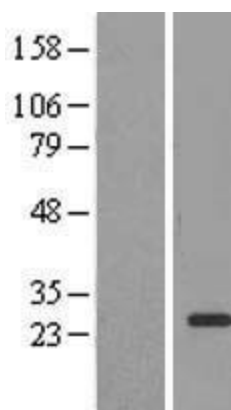
**MW:** 24.8 kDa

**Gene Summary:** This gene encodes a translation elongation factor. The protein is a guanine nucleotide exchange factor involved in the transfer of aminoacylated tRNAs to the ribosome. Alternative splicing results in three transcript variants which differ only in the 5' UTR. [provided by RefSeq, Jul 2008]

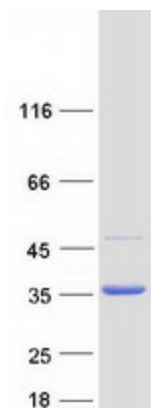
### Product images:



Circular map for RC200733



Western blot validation of overexpression lysate (Cat# [LY412075]) using anti-DDK antibody (Cat# [TA50011-100]). Left: Cell lysates from untransfected HEK293T cells; Right: Cell lysates from HEK293T cells transfected with RC200733 using transfection reagent MegaTran 2.0 (Cat# [TT210002]).



Coomassie blue staining of purified EEF1B2 protein (Cat# [TP300733]). The protein was produced from HEK293T cells transfected with EEF1B2 cDNA clone (Cat# RC200733) using MegaTran 2.0 (Cat# [TT210002]).