

Product datasheet for **RC200727**

BRCC36 (BRCC3) (NM_024332) Human Tagged ORF Clone

Product data:

Product Type:	Expression Plasmids
Product Name:	BRCC36 (BRCC3) (NM_024332) Human Tagged ORF Clone
Tag:	Myc-DDK
Symbol:	BRCC36
Synonyms:	BRCC36; C6.1A; CXorf53
Mammalian Cell Selection:	Neomycin
Vector:	pCMV6-Entry (PS100001)
E. coli Selection:	Kanamycin (25 ug/mL)
ORF Nucleotide Sequence:	>RC200727 ORF sequence Red=Cloning site Blue=ORF Green=Tags(s)

TTTTGTAATACGACTCACTATAGGGCGGCCGGAATTCGTCGACTGGATCCGGTACCGAGGAGATCTGCC
GCC**CGATCGCC**

ATGGCGGTGCAGGTGGTGCAGGCGGTGCAGGCGGTTTCATCTCGAGTCTGACGCTTCTCGTTTGTCTCA
ACCACGCTCTGAGCACAGAGAAGGAGGAAGTAATGGGGCTGTGCATAGGGGAGTTGAACGATGATACAAG
GAGTGACTCCAAATTTGCATATACTGGAAGTAAATGCGCACAGTTGCTGAAAAGTTGATGCCGTCAGA
ATTGTTACATTCATTCTGTCATCATCTTACGACGTTCTGATAAGAGGAAGGACCGAGTAGAAATTTCTC
CAGAGCAGCTGTCTGCAGCTTCAACAGAGGCAGAGAGGTTGGCTGAACTGACAGGCCGCCCATGAGAGT
TGTGGGCTGGTATCATTCCCATCCTCATATAACTGTTTGGCCTTACATGTTGATGTTCCGACACAAGCC
ATGTACCAGATGATGGATCAAGGCTTTGTAGGACTTATTTTTTCTGTTTCATAGAAGATAAGAACAACAA
AGACTGGCCGGTACTCTACACTTGCTTCCAATCCATACAGGCCAAAAGAGTTCAGAGTCCCTTATGAG
TCCACGAGACTTCTGGAGCTCCAGCCAGCACATCTCCATTGAGGGCCAGAAGGAAGAGGAAAGGTATGAG
AGAATCGAAATCCCAATCCATATTGTACCTCATGTCACTATCGGGAAAGTGTGCCTTGAATCAGCAGTAG
AGCTGCCAAGATCCTGTGCCAGGAGGAGCAGGATGCGTATAGGAGGATCCACAGCCTTACACATCTGGA
CTCAGTAACCAAGATCCATAATGGTCAAGTGTGTTACCAAGAATCTGTGCAGTCAGATGTCGGCAGTCAGC
GGGCCTCTCTACAGTGGTTGGAGGACAGACTGGAGCAAAACCAAGCATTGTCAGGAATTACAACAAG
AAAAGGAAGAGCTTATGCAAGAACTTTCTCTCTAGAA

ACGCGTACGCGGCCGCTCGAGCAGAAACTCATCTCAGAAGAGGATCTGGCAGCAAATGATATCCTGGATT
ACAAGGATGACGACGATAAGGTTTAA



[View online »](#)

Protein Sequence: >RC200727 protein sequence
Red=Cloning site Green=Tags(s)

MAVQVVQAVQAVHLESDAFLVCLNHALSTEKEEVMGLCIGELNDDTRSDSKFAYTGTEMRTVAEKVDAVR
 IVHIHSVILRRSDKRKRDRVEISPEQLSAASTEAEERLAELTGRPMRVVGVYHSHPHITVWPSHVDVRTQA
 MYQMMDQGFVGLIFSCFIEDKNTKTGRVLYTCFQSIQAQKSSSESLHGPRDFWSSSQHISIEGQKEEERYE
 RIEIPIHIVPHVTIGKVCLESAVELPKILCQEEQDAYRRIHSLTHLDSVTKIHNGSVFTKNLCSQMSAVS
 GPLLQWLEDRLEQNQHLQELQQEKEELMQELSSLE

TRTRPLEQKLISEEDLAANDILDYKDDDDKV

Chromatograms: https://cdn.origene.com/chromatograms/mk6083_e12.zip

Restriction Sites: SgfI-MluI

Cloning Scheme:



ACCN: NM_024332

ORF Size: 948 bp

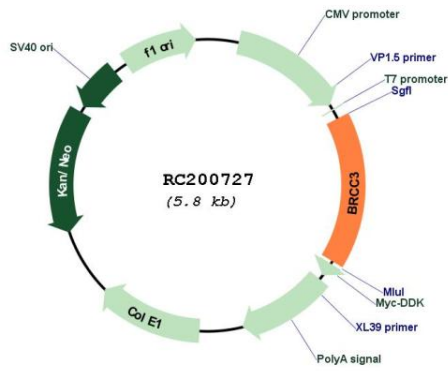
OTI Disclaimer: The molecular sequence of this clone aligns with the gene accession number as a point of reference only. However, individual transcript sequences of the same gene can differ through naturally occurring variations (e.g. polymorphisms), each with its own valid existence. This clone is substantially in agreement with the reference, but a complete review of all prevailing variants is recommended prior to use. [More info](#)

OTI Annotation: This clone was engineered to express the complete ORF with an expression tag. Expression varies depending on the nature of the gene.

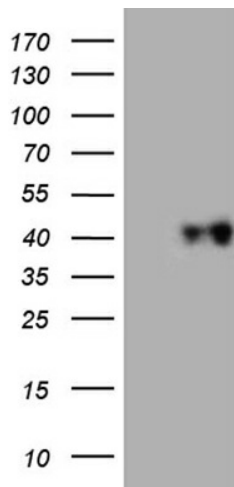
Components: The ORF clone is ion-exchange column purified and shipped in a 2D barcoded Matrix tube containing 10ug of transfection-ready, dried plasmid DNA (reconstitute with 100 ul of water).

Reconstitution Method:	<ol style="list-style-type: none">1. Centrifuge at 5,000xg for 5min.2. Carefully open the tube and add 100ul of sterile water to dissolve the DNA.3. Close the tube and incubate for 10 minutes at room temperature.4. Briefly vortex the tube and then do a quick spin (less than 5000xg) to concentrate the liquid at the bottom.5. Store the suspended plasmid at -20°C. The DNA is stable for at least one year from date of shipping when stored at -20°C.
RefSeq:	NM_024332.3 , NP_077308.1
RefSeq Size:	2952 bp
RefSeq ORF:	951 bp
Locus ID:	79184
UniProt ID:	P46736
Cytogenetics:	Xq28
Domains:	JAB_MPN
Protein Families:	Druggable Genome, Protease
MW:	36.1 kDa
Gene Summary:	<p>This gene encodes a subunit of the BRCA1-BRCA2-containing complex (BRCC), which is an E3 ubiquitin ligase. This complex plays a role in the DNA damage response, where it is responsible for the stable accumulation of BRCA1 at DNA break sites. The component encoded by this gene can specifically cleave Lys 63-linked polyubiquitin chains, and it regulates the abundance of these polyubiquitin chains in chromatin. The loss of this gene results in abnormal angiogenesis and is associated with syndromic moyamoya, a cerebrovascular angiopathy. Alternative splicing results in multiple transcript variants. A related pseudogene has been identified on chromosome 5. [provided by RefSeq, Jun 2011]</p>

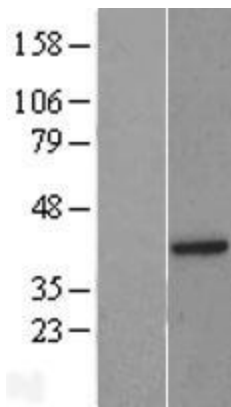
Product images:



Circular map for RC200727



HEK293T cells were transfected with the pCMV6-ENTRY control (Cat# [PS100001], Left lane) or pCMV6-ENTRY BRCC3 (Cat# RC200727, Right lane) cDNA for 48 hrs and lysed. Equivalent amounts of cell lysates (5 ug per lane) were separated by SDS-PAGE and immunoblotted with anti-BRCC3 (Cat# [TA811409])(1:500). Positive lysates [LY411291] (100ug) and [LC411291] (20ug) can be purchased separately from OriGene.



Western blot validation of overexpression lysate (Cat# [LY411291]) using anti-DDK antibody (Cat# [TA50011-100]). Left: Cell lysates from untransfected HEK293T cells; Right: Cell lysates from HEK293T cells transfected with RC200727 using transfection reagent MegaTran 2.0 (Cat# [TT210002]).