

Product datasheet for **RC200721**

GLB1 (NM_001079811) Human Tagged ORF Clone

Product data:

Product Type:	Expression Plasmids
Product Name:	GLB1 (NM_001079811) Human Tagged ORF Clone
Tag:	Myc-DDK
Symbol:	GLB1
Synonyms:	EBP; ELNR1; MPS4B
Mammalian Cell Selection:	Neomycin
Vector:	pCMV6-Entry (PS100001)
E. coli Selection:	Kanamycin (25 ug/mL)



[View online »](#)

**ORF Nucleotide
Sequence:**

>RC200721 ORF sequence
 Red=Cloning site Blue=ORF Green=Tags(s)

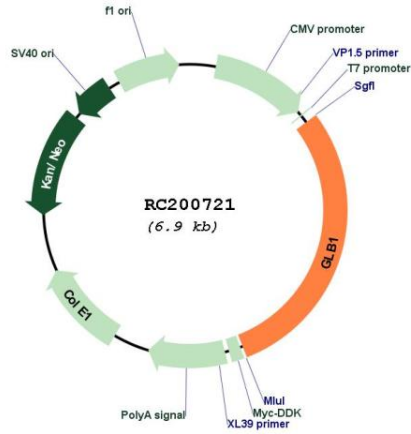
TTTTGTAATACGACTCACTATAGGGCGGCCGGGAATTCGTCGACTGGATCCGGTACCGAGGAGATCTGCC
 GCC**CGGATCGCC**

ATGCCGGGTTCTCTGTTTCGCATCCTCCTTCTGCTGCTGGTTCTGCTGCTTCTGGGCCCTACGCGGGCT
 TGCGCAATGCCACCCAGAGGATGTTTGAATTGACTATAGCCGGGACTCCTTCTCAAGGATGGCCAGCC
 ATTTTCGCTACATCTCAGGAAGCATTCACTACTCCCGTGTGCCCGCTTCTACTGGAAGGACCGGCTGCTG
 AAGATGAAGATGGCTGGGCTGAACGCCATCCAGACGTATGTGCCCTGGAACCTTTCATGAGCCCTGGCCAG
 GACAGTACCAGTTTTCTGAGGACCATGATGTGGAATATTTTCTCGGCTGGCTCATGAGCTGGGACTGCT
 GGTTATCCTGAGGCCCGGCCCTACATCTGTGCAGAGTGGGAAATGGGAGGATTACCTGCTTGGCTGCTA
 GAGAAAGAGTCTATTCTTCTCCGCTCCTCCGACCCAGATTACCTGGCAGCTGTGGACAAGTGGTTGGGAG
 TCCTTCTGCCAAGATGAAGCCTCCTCTATCAGAATGGAGGGCCAGTTATAACAGTGCAGTTGAAAA
 TGAATATGGCAGCTACTTTGCCTGTGATTTTGACTACCTGCGCTTCTGCAGAAGCGCTTTCGCCACCAT
 CTGGGGGATGATGTGGTTCTGTTTACCCTGATGGAGCACATAAAACATTCCTGAAATGTGGGGCCCTGC
 AGGGCCTCTACACCACGGTGGACTTTGGAACAGGCAGCAACATCAGAGTGTCTTCTAAGCCAGAGGAA
 GTGTGAGCCCAAAGGACCTTGATCAATTCTGAATTCTATACTGGCTGGCTAGATCACTGGGGCCAACT
 CACTCCACAATCAAGACCGAAGCAGTGGCTTCTCCCTCTATGATATACTGGCCGTGGGGCGAGTGTGA
 ACTTGTACATGTTTATAGGTGGGACCAATTTGCCTATTGGAATGGGGCCAACTCACCTATGCAGCACA
 GCCCACCAGCTACGACTATGATGCCCACTGAGTGAGGCTGGGGACCTCACTGAGAAGTATTTTGTCTG
 CGAAACATCATCCAGAAGTTTGAAGAAAGTAAAGACAGTGGGAGCAGCTCTGGACATTCTGTGTCCCTCTGGGCC
 CATCAAAAGCCTTTATCCCTTGACATTTATCCAGGTGAAACAGCATTATGGGTTTGTGCTGTACCGGACA
 ACACTTCTCAAGATTGCAGCAACCCAGCACCTCTCTTCCACCCTCAATGGAGTCCACGATCGAGCAT
 ATGTTGCTGTGGATGGGATCCCCAGGGAGTCTTGAGCGAAACAATGTGATCACTCTGAACATAACAGG
 GAAAGCTGGAGCCACTCTGGACCTTCTGGTAGAGAACATGGGACGTGTGAACTATGGTGCATATATCAAC
 GATTTTAAAGGTTTGGTTTCTAACCTGACTCTCAGTTCCAATATCCTCACGGACTGGACGATCTTCCAC
 TGGACACTGAGGATGCAGTGCAGCCACCTGGGGGCTGGGGACACCGTGACAGTGGCCACCATGATGA
 AGCCTGGGCCCAACTCATCCAACACACGCTCCCGCCTTTTATATGGGGAACCTCTCCATTCCAGT
 GGGATCCAGACTTGCCCAAGGACCTTTATCCAGTTTCTGGATGGACCAAGGGCCAGGTCTGGATTA
 ATGGCTTTAACCTTGCCGCTATTGGCCAGCCCGGGCCCTCAGTTGACCTTGTGTGCCCCAGCACAT
 CCTGATGACCTCGGCCCAACACCATCACCGTCTGGAACCTGGAGTGGGCACCCCTGCAGCAGTGTGAT
 CCAGAACTATGTGCTGTGACGTTCTGGACAGGCCAGTTATTGGCTCATCTGTGACCTACGATCATCCCT
 CCAAACTGTTGAAAAAAGACTCATGCCCCACCCCGCAAAAAAACAAGATTCATGGCTGGACCATGT
 A

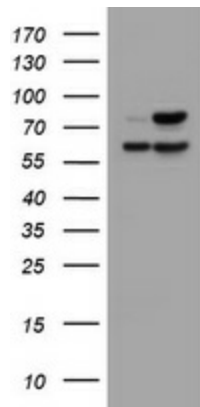
ACGCGTACGCGGGCGCTCGAGCAGAACTCATCTCAGAAGAGGATCTGGCAGCAATGATATCCTGGATT
 ACAAGGATGACGACGATAAGGTTTAA

Components:	The ORF clone is ion-exchange column purified and shipped in a 2D barcoded Matrix tube containing 10ug of transfection-ready, dried plasmid DNA (reconstitute with 100 ul of water).
Reconstitution Method:	<ol style="list-style-type: none">1. Centrifuge at 5,000xg for 5min.2. Carefully open the tube and add 100ul of sterile water to dissolve the DNA.3. Close the tube and incubate for 10 minutes at room temperature.4. Briefly vortex the tube and then do a quick spin (less than 5000xg) to concentrate the liquid at the bottom.5. Store the suspended plasmid at -20°C. The DNA is stable for at least one year from date of shipping when stored at -20°C.
RefSeq Size:	2500 bp
RefSeq ORF:	1944 bp
Locus ID:	2720
UniProt ID:	P16278
Cytogenetics:	3p22.3
Protein Families:	Druggable Genome
Protein Pathways:	Galactose metabolism, Glycosaminoglycan degradation, Glycosphingolipid biosynthesis - ganglio series, Lysosome, Metabolic pathways, Other glycan degradation, Sphingolipid metabolism
MW:	76.1 kDa
Gene Summary:	This gene encodes a member of the glycosyl hydrolase 35 family of proteins. Alternative splicing results in multiple transcript variants, at least one of which encodes a preproprotein that is proteolytically processed to generate the mature lysosomal enzyme. This enzyme catalyzes the hydrolysis of a terminal beta-linked galactose residue from ganglioside substrates and other glycoconjugates. Mutations in this gene may result in GM1-gangliosidosis and Morquio B syndrome. [provided by RefSeq, Nov 2015]

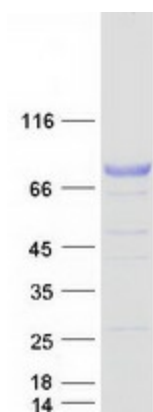
Product images:



Circular map for RC200721



HEK293T cells were transfected with the pCMV6-ENTRY control (Cat# [PS100001], Left lane) or pCMV6-ENTRY GLB1 (Cat# RC200721, Right lane) cDNA for 48 hrs and lysed. Equivalent amounts of cell lysates (5 ug per lane) were separated by SDS-PAGE and immunoblotted with anti-GLB1 (Cat# [TA505544]).



Coomassie blue staining of purified GLB1 protein (Cat# [TP300721]). The protein was produced from HEK293T cells transfected with GLB1 cDNA clone (Cat# RC200721) using MegaTran 2.0 (Cat# [TT210002]).