

Product datasheet for RC200716

HDLBP (NM_203346) Human Tagged ORF Clone

Product data:

Product Type:	Expression Plasmids
Product Name:	HDLBP (NM_203346) Human Tagged ORF Clone
Tag:	Myc-DDK
Symbol:	HDLBP
Synonyms:	HBP; PRO2900; VGL
Mammalian Cell Selection:	Neomycin
Vector:	pCMV6-Entry (PS100001)
E. coli Selection:	Kanamycin (25 ug/mL)
ORF Nucleotide Sequence:	>RC200716 representing NM_203346 Red=Cloning site Blue=ORF Green=Tags(s)

TTTTGTAATACGACTCACTATAGGGCGGCCGGAATTCGTCGACTGGATCCGGTACCGAGGAGATCTGCC
GCC**CGATCGCC**

ATGAGTCCGTTGCAGTTTTGACCCAAGAGAGTTTTGCTGAACACCGAAGTGGGCTGGTCCGCAACAAA
TCAAAGTTGCCACTCTAAATTCAGAAGAGGAGAGCGACCCTCCAACCTACAAGGATGCCTCCCTCCACT
TCCTGAGAAAGCTGCTTGCTGGAAAGTGCCAGGAACCCGCTGGAGCCTGGGGGAACAAGATCCGACCC
ATCAAGGCTTCTGTCATCACTCAGGTGTTCCATGTACCCCTGGAGGAGAGAAAATACAAGGATATGAACC
AGTTTGGAGAAGGTGAACAAGCAAAAATCTGCCTTGAGATCATGCAGAGAACTGGTGCTCACTTGGAGCT
GTCTTTGGCCAAAGACCAAGGCCTCTCCATCATGGTGTCAGGAAAGCTGGATGCTGTGATGAAAGCTCGG
AAGGACATTGTTGCTAGACTGCAGACTCAGGCCTCAGCAACTGTTGCCATTCCCAAAGAACCATCGCT
TTGTTATTGGCAAAAATGGAGAGAACTGCAAGACTTGGAGCTAAAACTGCAACCAAAATCCAGATCCC
ACGCCCAGATGACCCAGCAATCAGATCAAGATCACTGGCACCAAGAGGGCATCGAGAAAGCTCGCCAT
GAAGTCTTACTCATCTCTGCCGAGCAGGACAAACGTGCTGTGGAGAGGCTAGAAGTAGAAAAGGCATTCC
ACCCCTCATCGCTGGGCCGTAATAGACTGGTTGGCGAGATCATGCAGGAGACAGGCACGCGCATCAA
CATCCCCCACCAGCGTGAACCGGACAGAGATTGTCTTCACTGGAGAGAAGGAACAGTTGGCTCAGGCT
GTGGCTCGCATCAAGAAGATTTATGAGGAGAAGAAAAGAAGACTACAACCATTGCAAGTGAAGTGAAGA
AATCCCAACACAAGTATGTCATTGGGCCCAAGGGCAATTCATTGCAGGAGATCCTTGAGAGAACTGGAGT
TCCGTTGAGATCCCACCTCAGACAGCATCTCTGAGACTGTAATACTTCGAGGGCAACCTGAAAAGTTA
GGTCAGGCGTTGACTGAAGTCTATGCCAAGGCCAATAGCTTACCCTCTCCTCTGTGCGGCCCTTCTCT
GGCTTACCCTTTCATCATTGGCAAGAAAGGGCAGAACCTGGCCAAAATCACTCAGCAGATGCCAAAGGT
TCACATCGAGTTCACAGAGGGCGAAGACAAGATCACCCCTGGAGGGCCCTACAGAGGATGTCAATGTGGCC
CAGGAACAGATAGAAGGCATGGTCAAAGATTTGATTAACCGGATGGACTATGTGGAGATCAACATCGACC
ACAAGTCCACAGGCACCTCATTGGGAAGAGCGGTGCCAACATAAACAGAATCAAAGACCAAGTACAAGT
GTCGTTGCGCATCCCTCCTGACAGTGAGAAGAGCAATTTGATCCGCATCGAGGGGACCCACAGGGCGTG



[View online >](#)

CAGCAGGCCAAGCGAGAGCTGCTGGAGCTTGCATCTCGCATGGAAAAATGAGCGTACCAAGGATCTAATCA
TTGAGCAAAGATTTTCATCGCACAATCATTGGGCAGAAGGGTGAACGGATCCGTGAAATTCGTGACAAATT
CCCAGAGGTCAATTAACCTTCCAGACCCAGCACAAAAAAGTGACATTGTCCAGCTCAGAGGACCTAAG
AATGAGGTGGAAAAATGCACAAAATACATGCAGAAGATGGTGGCAGATCTGGTGGAAAAATAGCTATTCAA
TTTCTGTTCCGATCTTCAAACAGTTTCAACAAGAATCATTGGGAAAGGAGGCGCAAACATTA AAAAGAT
TCGTGAAGAAAGCAACACCAAAAATCGACCTTCCAGCAGAGAATAGCAATTCAGAGACCATTATCATCACA
GGCAAGCGAGCCAACTGCGAAGCTGCCCGGAGCAGGATTCTGTCTATTCAGAAAGACCTGGCCAACATAG
CCGAGGTAGAGGTCTCCATCCCTGCCAAGCTGCACAACCTCCCTCATTGGCACCAAGGGCCGTCTGATCCG
CTCCATCATGGAGGAGTGC GCGGGGTCCACATTCACCTTCCCGTGAAGGTTTCAGGAAGCGACACC GTT
GTTATCAGGGGCCCTTCTCGGATGTGGAGAAGGCCAAGAAGCAGCTCCTGCATCTGGCGGAGGAGAAGC
AAACCAAGAGTTTCACTGTTGACATCCGCGCCAAGCCAGAATACCACAAATTCCTCATCGGCAAGGGGGG
CGGCAAAATTCGCAAGGTGCGGACAGCACTGGAGCACGTGTCTTCCCTGCGGCTGAGGACAAGGAC
CAGGACCTGATCACCATCATTGGAAAGGAGGACGCCGTCCGAGAGGCACAGAAGGAGCTGGAGGCCCTTGA
TCCAAAACCTGGATAATGTGGTGAAGACTCCATGCTGGTGGACCCCAAGCACCACCGCCACTTCGTCAT
CCGAGAGGCCAGGTCTTGC GGGAGATTGCTGAAGAGTATGGCGGGGTGATGGTCACTTCCACGCTCT
GGCACACAGAGCGACAAAGTCAACCTCAAGGGCGCCAAGGACTGTGTGGAGGCAGCAAGAAACGCATTC
AGGAGATCATTGAGGACCTGGAAGCTCAGGTGACATTAGAATGTGCTATACCCCGAGAAATTCATCGATC
TGTGATGGGCCCCAAAGGTTCCAGAATCCAGCAGATTACTCGGGATTTCACTGTTCAAATTAATTTCCCA
GACAGAGAGGAGAACGCAGTTACAGTACAGAGCCAGTTGTCCAGGAGAAATGGGGACGAAGCTGGGGAGG
GGAGAGAGGCTAAAGATTGTGACCCCGCTCTCCAAGGAGGTGTGACATCATCATCTCTGGCCGGAA
AGAAAAGTGTGAGGCTGCCAAGGAAGCTCTGGAGGCATTGGTTCTGTCAACATTGAAGTAGAGGTGCC
TTTGACCTTACCCTTACGTTATTGGGCAGAAAGGAAGTGGGATCCGCAAGATGATGGATGAGTTTGAGG
TGAACATACATGTCCCGCACCTGAGCTGCAGTCTGACATCATCGCCATCACGGGCTCGCTGCAAATTT
GGACCGGCCAAGGCTGGACTGCTGGAGCGTGTGAAGGAGCTACAGGCCGAGCAGGAGGACCGGGCTTTA
AGGAGTTTTAAGCTGAGTGTCACTGTAGACCCCAATACCATCCCAAGATTATCGGGAGAAAGGGGCAG
TAATTACCCAAATCCGTTGGAGCATGACGTGAACATCCAGTTTCTGATAAGGACGATGGGAACCGCC
CCAGGACCAAAATACCATCACAGGGTACGAAAAGAACACAGAAGCTGCCAGGGATGCTATACTGAGAATT
GTGGGTGAACTTGAGCAGATGGTTTCTGAGGACGTCCCGCTGGACCACCGCTTACGCCCCGATCATTG
GTGCCCGGGCAAAGCCATTGCAAAAATCATGGACGAATTCAGGTGGACATTGCTTCCACAGAGCGG
AGCCCCAGACCCCAACTGCGTCACTGTGACGGGCTCCAGAGAATGTGGAGGAAGCCATCGACCACATC
CTCAATCTGGAGGAGGAATACCTAGCTGACGTGGTGGACAGTGAAGCGCTGCAGGTATACATGAAACCCC
CAGCACACGAAGAGGCCAAGGCACCTTCCAGAGGCTTTGTGGTGGGGACGCACCCTGGACCGCCAGCAG
CAGTGAGAAGGCTCCTGACATGAGCAGCTCTGAGGAATTTCCAGCTTTGGGGCTCAGGTGGCTCCCAAG
ACCTCCCTTGGGGCCCCAAACGA

ACGCGTACGCGGCCGCTCGAGCAGAACTCATCTCAGAAGAGGATCTGGCAGCAATGATATCCTGGATT
ACAAGGATGACGACGATAAGGTTTAA

Protein Sequence: >RC200716 representing NM_203346
 Red=Cloning site Green=Tags(s)

MSSVAVLTQESFAEHRSGLVLPQQIKVATLNSEESDPPTYKDAFPPLPEKAACLESAPAGAWGNKIRP
 IKASVITQVFHVPLEERKYKDMNQFGEQAKICLEIMQRTGAHLEL SLAKDQGLSIMVSGKLDAYMKAR
 KDIVARLQTQASATVAIPKEHHRFVIGKNGEKLQDLELKTATKIQIPRPDDPSNQIKITGTKEGIEKARH
 EVLLISAEQDKRAVERLEVEKAFHPFIAGPYNRLVGEIMQETGTRINIPPPSVNRTEIVFTGEKEQLAQA
 VARIKKIYEKKKKTTTIAVEVKKSQHKYVIGPKGNSLQEILERTGVSVEIPPSDSISETVILRGEPEKL
 GQALTEVYAKANSFTVSSVAAPSWLHRFIIIGKKGQNLAKITQMPKVHIEFTEGEDKITLEGPTEDVNVV
 QEIQIEGMVKDLINRMDYVEINIDHKFHRHLIGKSGANINRIKDQYKVSVRIPDSEKSNLIRIEGDPQGV
 QQAKRELLELASRMENERTKDLIEQRFHRTIIGQKGERIREIRDKFPEVIINFPDPAQKSDIVQLRGP
 NEVEKCTKYMQKMDL VENSYSISVPIFKQFHKNIIIGKGGANIKKIREESNTKIDLPAENSNETIIIT
 GKRANCEAARSRLSIQKDLANIAEVEVSIPAKLHNSLIGTKGRLIRSIMEECGVHIHFPVEGSGSDTV
 VIRGSSDVEKAKQLLHLAEEKQTKSFTVDIRAKPEYHKFLIGKGGKIRKVRDSTGARVIFPAAEDKD
 QDLITIIIGKEDAVREAQKELEALIQNLDNVVEDSMLVDPKHHHRFVIRRGQVLEIAEEYGGVMVSPRS
 GTQSDKVTLLKGAKDCVEAAKKRIQEIIEDELAQVTLCAIPQKFHRSVMGPKGSRQQITRDFSVQIKFP
 DREENAVHSTEPVQENGDEAGEGREAKDCDPGSPRRCDIIISGRKEKCEAAKEALEALVPVITIEVEVP
 FDLHRYVIGQKSGIRKMMDEFEVNIHVPAPQLSDIIAITGLAANLDRAGLLERVKELQAEQEDRAL
 RSFKLSVTVDPKYHPKIIIGRKGAVITQIRLEHDVNIQFPDKDDGNPQDQITITGYEKNTAARDAILRI
 VGELEQMVSEDVPLDHRVHARIIGARGKAIKIMDEFKVDIRFPQSGADPNCVTVTGLPENVEEAIDHI
 LNL EEEYLADVVDSEALQVYMKPPAHEEA KAPSRGFVVRDAPWTASSSEKAPDMSSEEFPSFGAQVAPK
 TLPWGPKR

TRTRPLEQKLISEEDLAANDILDYKDDDDKV

Chromatograms: https://cdn.origene.com/chromatograms/mg4445_e09.zip

Restriction Sites: SgfI-MluI

Cloning Scheme:

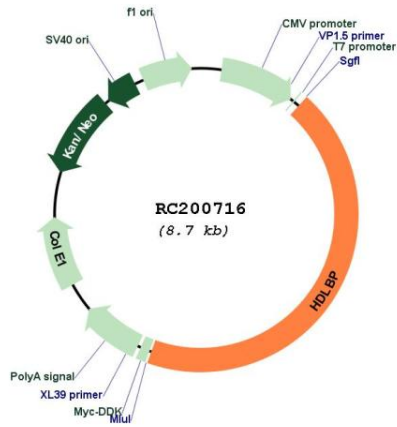


ACCN: NM_203346

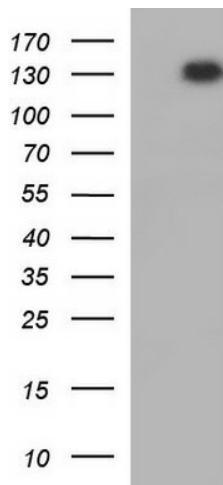
ORF Size: 3804 bp

OTI Disclaimer:	The molecular sequence of this clone aligns with the gene accession number as a point of reference only. However, individual transcript sequences of the same gene can differ through naturally occurring variations (e.g. polymorphisms), each with its own valid existence. This clone is substantially in agreement with the reference, but a complete review of all prevailing variants is recommended prior to use. More info
OTI Annotation:	This clone was engineered to express the complete ORF with an expression tag. Expression varies depending on the nature of the gene.
Components:	The ORF clone is ion-exchange column purified and shipped in a 2D barcoded Matrix tube containing 10ug of transfection-ready, dried plasmid DNA (reconstitute with 100 ul of water).
Reconstitution Method:	<ol style="list-style-type: none">1. Centrifuge at 5,000xg for 5min.2. Carefully open the tube and add 100ul of sterile water to dissolve the DNA.3. Close the tube and incubate for 10 minutes at room temperature.4. Briefly vortex the tube and then do a quick spin (less than 5000xg) to concentrate the liquid at the bottom.5. Store the suspended plasmid at -20°C. The DNA is stable for at least one year from date of shipping when stored at -20°C.
RefSeq:	NM_203346.5
RefSeq Size:	6367 bp
RefSeq ORF:	3807 bp
Locus ID:	3069
UniProt ID:	Q00341
Cytogenetics:	2q37.3
MW:	141.4 kDa
Gene Summary:	The protein encoded by this gene binds high density lipoprotein (HDL) and may function to regulate excess cholesterol levels in cells. The encoded protein also binds RNA and can induce heterochromatin formation. [provided by RefSeq, Mar 2016]

Product images:



Circular map for RC200716



HEK293T cells were transfected with the pCMV6-ENTRY control (Cat# [PS100001], Left lane) or pCMV6-ENTRY HDLBP (Cat# RC200716, Right lane) cDNA for 48 hrs and lysed. Equivalent amounts of cell lysates (5 ug per lane) were separated by SDS-PAGE and immunoblotted with anti-HDLBP (Cat# [TA590332]).