

Product datasheet for RC200715

Biglycan (BGN) (NM_001711) Human Tagged ORF Clone

Product data:

Product Type:	Expression Plasmids
Product Name:	Biglycan (BGN) (NM_001711) Human Tagged ORF Clone
Tag:	Myc-DDK
Symbol:	Biglycan
Synonyms:	DSPG1; MRLS; PG-S1; PGI; SEMDX; SLRR1A
Mammalian Cell Selection:	Neomycin
Vector:	pCMV6-Entry (PS100001)
E. coli Selection:	Kanamycin (25 ug/mL)
ORF Nucleotide Sequence:	>RC200715 ORF sequence Red=Cloning site Blue=ORF Green=Tags(s)

TTTTGTAATACGACTCACTATAGGGCGCCGGGAATTCGTCGACTGGATCCGGTACCGAGGAGATCTGCC
GCC**CGATCGCC**

ATGTGGCCCTGTGGCCCTCGTGTCTCTGCTGGCCCTGAGCCAGGCCCTGCCCTTTGAGCAGAGAGGCT
TCTGGGACTTCACCCTGGACGATGGGCCATTCATGATGAACGATGAGGAAGCTTCGGGCGCTGACACCTC
AGGCGTCTGGACCCGGACTCTGTCACACCCACCTACAGCGCCATGTGTCCTTTCGGCTGCCACTGCCAC
CTGCGGGTGGTTCAGTGTCCGACCTGGGTCTGAAGTCTGTGCCCAAAGAGATCTCCCTGACACCACGC
TGCTGGACCTGCAGAACAACGACATCTCCGAGCTCCGCAAGGATGACTTCAAGGGTCTCCAGCACCTCTA
CGCCTCGTCTGGTGAACAACAAGATCTCCAAGATCCATGAGAAGGCCTTCAGCCCACTGCGGAAGCTG
CAGAAGCTCTACATCTCCAAGAACCACCTGGTGGAGATCCCGCCCAACCTACCCAGCTCCCTGGTGGAGC
TCCGCATCCACGACAACCGCATCCGCAAGGTGCCAAGGGAGTGTTCAGCGGGCTCCGGAACATGAACTG
CATCGAGATGGGCGGGAACCCACTGGAGAACAGTGGCTTTGAACCTGGAGCCTTCGATGGCTGAAGCTC
AACTACCTGCGCATCTCAGAGGCCAAGCTGACTGGCATCCCCAAAGACCTCCCTGAGACCCTGAATGAAC
TCCACCTAGACCACAACAAAATCCAGGCCATCGAACTGGAGGACCTGCTTCGCTACTCCAAGCTGTACAG
GCTGGGCTTAGGCCACAACCAGATCAGGATGATCGAGAACGGGAGCCTGAGCTTCTGCCACCCCTCCGG
TGCTCACTGGACAACAACAAGTTGGCCAGGGTGCCCTCAGGGCTCCAGACCTCAAGCTCCTCCAGG
TGGTCTATCTGCACTCCAACAACATCACCAAAGTGGGTGTCAACGACTTCTGTCCATGGGCTTCGGGGT
GAAGCGGGCTACTACAACGGCATCAGCCTCTTCAACAACCCCGTGCCTACTGGGAGGTGCAGCCGGCC
ACTTTCGCTGCGTCACTGACCGCTGGCCATCCAGTTTGGCAACTACAAAAAG

ACGCGTACGCGGCCGCTCGAGCAGAAACTCATCTCAGAAGAGGATCTGGCAGCAATGATATCCTGGATT
ACAAGGATGACGACGATAAGGTTTAA



[View online »](#)

Protein Sequence: >RC200715 protein sequence
Red=Cloning site Green=Tags(s)

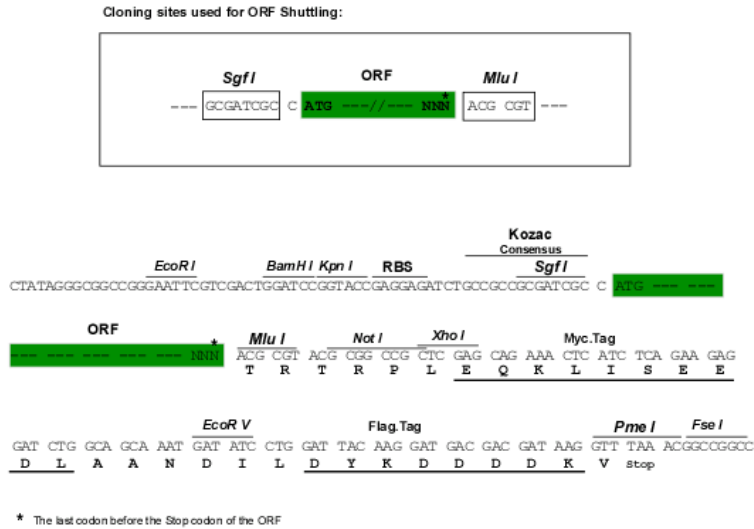
MWPLWRLVSLALSQLPFEQRGFWDFTLDDGPFMMNDEEASGADTSGVLDPDSVTPTYSAMCPFGCHCH
 LRVVQCSDLGLKSPKEISPDITLLDLQNDISELRKDDFKGLQHLVALVNNKISKIHEKAFSPLRKL
 QKLYISKNHLEIPPPLSSLVELRIHDNRIRKVPKGVFSGLRNMNCIEMGGNPLENSGFEPGAFDGLKL
 NYLRISEAKLTGIPKDLPETLNELHLDHNKIQAIELEDLLRYSKLYRGLGHNQIRMIENGLSFLPTLR
 ELHLDNNKLARVPSGLPDLKLLQVYVYLSHNNITKVGVDNDFCPMGFGVKRAYYNGISLFNPNVPYWEVQPA
 TFRCVTDRLAIQFGNYKK

TRTRPLEQKLISEEDLAANDILDYKDDDDKV

Chromatograms: https://cdn.origene.com/chromatograms/mk6066_h12.zip

Restriction Sites: SgfI-MluI

Cloning Scheme:



ACCN: NM_001711

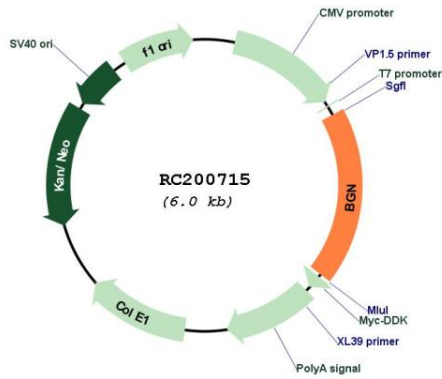
ORF Size: 1104 bp

OTI Disclaimer: Due to the inherent nature of this plasmid, standard methods to replicate additional amounts of DNA in E. coli are highly likely to result in mutations and/or rearrangements. Therefore, OriGene does not guarantee the capability to replicate this plasmid DNA. Additional amounts of DNA can be purchased from OriGene with batch-specific, full-sequence verification at a reduced cost. Please contact our customer care team at custsupport@origene.com or by calling 301.340.3188 option 3 for pricing and delivery.

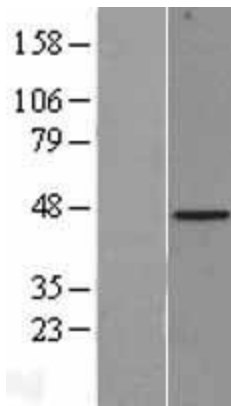
The molecular sequence of this clone aligns with the gene accession number as a point of reference only. However, individual transcript sequences of the same gene can differ through naturally occurring variations (e.g. polymorphisms), each with its own valid existence. This clone is substantially in agreement with the reference, but a complete review of all prevailing variants is recommended prior to use. [More info](#)

OTI Annotation:	This clone was engineered to express the complete ORF with an expression tag. Expression varies depending on the nature of the gene.
Components:	The ORF clone is ion-exchange column purified and shipped in a 2D barcoded Matrix tube containing 10ug of transfection-ready, dried plasmid DNA (reconstitute with 100 ul of water).
Reconstitution Method:	<ol style="list-style-type: none">1. Centrifuge at 5,000xg for 5min.2. Carefully open the tube and add 100ul of sterile water to dissolve the DNA.3. Close the tube and incubate for 10 minutes at room temperature.4. Briefly vortex the tube and then do a quick spin (less than 5000xg) to concentrate the liquid at the bottom.5. Store the suspended plasmid at -20°C. The DNA is stable for at least one year from date of shipping when stored at -20°C.
RefSeq:	NM_001711.2
RefSeq Size:	2465 bp
RefSeq ORF:	1107 bp
Locus ID:	633
UniProt ID:	P21810
Cytogenetics:	Xq28
Domains:	LRRNT, LRR, LRR_TYP, LRR_PS
Protein Families:	Secreted Protein
MW:	41.7 kDa
Gene Summary:	This gene encodes a member of the small leucine-rich proteoglycan (SLRP) family of proteins. The encoded preproprotein is proteolytically processed to generate the mature protein, which plays a role in bone growth, muscle development and regeneration, and collagen fibril assembly in multiple tissues. This protein may also regulate inflammation and innate immunity. Additionally, the encoded protein may contribute to atherosclerosis and aortic valve stenosis in human patients. This gene and the related gene decorin are thought to be the result of a gene duplication. [provided by RefSeq, Nov 2015]

Product images:



Circular map for RC200715



Western blot validation of overexpression lysate (Cat# [LY400642]) using anti-DDK antibody (Cat# [TA50011-100]). Left: Cell lysates from untransfected HEK293T cells; Right: Cell lysates from HEK293T cells transfected with RC200715 using transfection reagent MegaTran 2.0 (Cat# [TT210002]).