

## Product datasheet for RC200712

### LSP1 (NM\_002339) Human Tagged ORF Clone

#### Product data:

Product Type:	Expression Plasmids
Product Name:	LSP1 (NM_002339) Human Tagged ORF Clone
Tag:	Myc-DDK
Symbol:	LSP1
Synonyms:	pp52; WP34
Mammalian Cell Selection:	Neomycin
Vector:	pCMV6-Entry (PS100001)
E. coli Selection:	Kanamycin (25 ug/mL)
ORF Nucleotide Sequence:	>RC200712 ORF sequence Red=Cloning site Blue=ORF Green=Tags(s)

TTTTGTAATACGACTCACTATAGGGCGGCCGGAATTCGTCGACTGGATCCGGTACCGAGGAGATCTGCC  
GCC**CGATCGC**C

ATGGCGGAGGCTTCGAGTGACCCGGGTGCTGAGGAGCGGGAAGAGTTGCTGGGGCCACTGCTCAGTGGA  
GCGTGGAGGACGAGGAGGAGGCCGTCCACGAGCAATGCCAGCATGAGAGAGACAGGCAGCTTCAGGCCCA  
GGACGAGGAGGGAGGCGCCATGTCCCGAGCGGCCGAAGCAGGAGATGCTCCTCAGCCTGAAGCCCTCG  
GAGGCCCTGAAGTGGATGAGGACGAGGGCTTTGGCGACTGGTCCCAGAGGCCAGAGCAGCGGCAGCAGC  
ACGAGGGGGCGCAGGGCACCTTTGGACAGCGGAGAGCCCCCAGTGCAGGAGTCCAGGGGGAGCAAGA  
GGACAGGCCCGGCTGCATGCCTACGAAAAGGAGGACAGTGAAGTCCACCTGGAGGAGTTGAGTCTG  
AGCAAGGAGGGGCCAGGCCAGAGGACACTGTCCAGGACAACCTGGGGGCCGAGGGGCTGAGGAGGAAC  
AGGAGGAGCACCAGAAATGTGACGAGCCAGGACACCCAGCCCCCTGGTCTTGGAGGGGACCATCGAACA  
GAGCTCGCCTCCCTGAGCCCTACCACCAAACCTCATCGACAGGACCGAGTCCCTAAACCGCTCCATAGAG  
AAGAGTAACAGTGTGAAGAAATCCCAGCCAGACTTGCCCATCTCCAAGATTGATCAGTGGCTGGAACAAT  
ACACCCAGGCCATCGAGACCGTGGCCGGACCCCCAAGCTAGCCCGCCAGGCCTCCATAGAGCTGCCAG  
CATGGCTGTGGCCAGTACCAAGAGTCGGTGGGAGACGGGTGAGGTACAGGCTCAGTCTGCGGCCAAGACT  
CGTCTGCAAGGATATTGTGGCTGGAGACATGAGCAAGAAAAGCCTCTGGGAGCAGAAGGGAGGCTCCA  
AGACCTCATCAACAATTAAGAGCACCCATCTGGGAAGAGGTATAAGTTTGTGCCACCGGGCATGGGAA  
GTATGAGAAGGTGCTTGTGGAAGGGGGCCCGGCTCCC

**ACGCGT**ACGCGGCCGCTCGAGCAGAAACTCATCTCAGAAGAGGATCTGGCAGCAAATGATATCCTGGATT  
ACAAGGATGACGACGATAAGGTTTAA



[View online »](#)

**Protein Sequence:** >RC200712 protein sequence  
 Red=Cloning site Green=Tags(s)

MAEASSDPGAEEEREELLGPTAQWSVEDEEEAVHEQCQHERDRQLAQDEEGGHVPERPKQEMLLSLKPS  
 EAPELDEDEFGDWSQRPEQRQQHEGAQGTLDSEPPQCRSPEGEQEDRPLHAYEKEDSDEVHLEELSL  
 SKEGPGP EDTVQDNLGAAGAE EEEQEEHQK CQPRT P S P L V L E G T I E Q S S P P L S P T T K L I D R T E S L N R S I E  
 K S N S V K K S Q P D L P I S K I D Q W L E Q Y T Q A I E T A G R T P K L A R Q A S I E L P S M A V A S T K S R W E T G E V Q A Q S A A K T  
 P S C K D I V A G D M S K K S L W E Q K G G S K T S S T I K S T P S G K R Y K F V A T G H G K Y E K V L V E G G P A P

TRTRPLEQKLISEEDLAANDILDYKDDDDKV

**Chromatograms:** [https://cdn.origene.com/chromatograms/mk6393\\_f05.zip](https://cdn.origene.com/chromatograms/mk6393_f05.zip)

**Restriction Sites:** SgfI-MluI

**Cloning Scheme:**

Cloning sites used for ORF Shuttling:



\* The last codon before the Stop codon of the ORF

**ACCN:** NM\_002339

**ORF Size:** 1017 bp

**OTI Disclaimer:** The molecular sequence of this clone aligns with the gene accession number as a point of reference only. However, individual transcript sequences of the same gene can differ through naturally occurring variations (e.g. polymorphisms), each with its own valid existence. This clone is substantially in agreement with the reference, but a complete review of all prevailing variants is recommended prior to use. [More info](#)

**OTI Annotation:** This clone was engineered to express the complete ORF with an expression tag. Expression varies depending on the nature of the gene.

**Components:** The ORF clone is ion-exchange column purified and shipped in a 2D barcoded Matrix tube containing 10ug of transfection-ready, dried plasmid DNA (reconstitute with 100 ul of water).

**Reconstitution Method:**

1. Centrifuge at 5,000xg for 5min.
2. Carefully open the tube and add 100ul of sterile water to dissolve the DNA.
3. Close the tube and incubate for 10 minutes at room temperature.
4. Briefly vortex the tube and then do a quick spin (less than 5000xg) to concentrate the liquid at the bottom.
5. Store the suspended plasmid at -20°C. The DNA is stable for at least one year from date of shipping when stored at -20°C.

**Note:** Plasmids are not sterile. For experiments where strict sterility is required, filtration with 0.22um filter is required.

**RefSeq:** [NM\\_002339.3](#)

**RefSeq Size:** 1756 bp

**RefSeq ORF:** 1020 bp

**Locus ID:** 4046

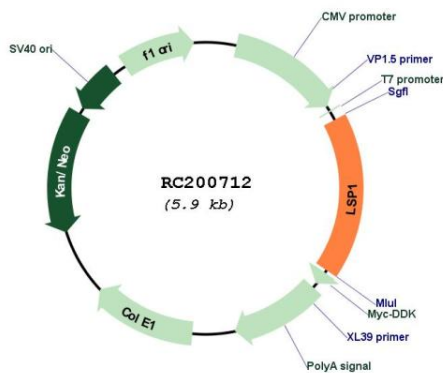
**UniProt ID:** [P33241](#)

**Cytogenetics:** 11p15.5

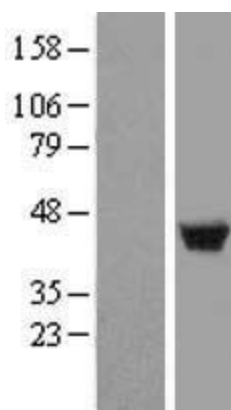
**MW:** 37.2 kDa

**Gene Summary:** This gene encodes an intracellular F-actin binding protein. The protein is expressed in lymphocytes, neutrophils, macrophages, and endothelium and may regulate neutrophil motility, adhesion to fibrinogen matrix proteins, and transendothelial migration. Alternative splicing results in multiple transcript variants encoding different isoforms. [provided by RefSeq, Jul 2008]

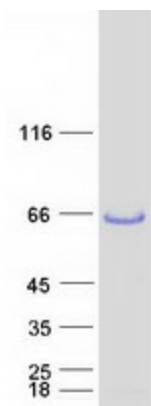
### Product images:



Circular map for RC200712



Western blot validation of overexpression lysate (Cat# [LY419390]) using anti-DDK antibody (Cat# [TA50011-100]). Left: Cell lysates from untransfected HEK293T cells; Right: Cell lysates from HEK293T cells transfected with RC200712 using transfection reagent MegaTran 2.0 (Cat# [TT210002]).



Coomassie blue staining of purified LSP1 protein (Cat# [TP300712]). The protein was produced from HEK293T cells transfected with LSP1 cDNA clone (Cat# RC200712) using MegaTran 2.0 (Cat# [TT210002]).