

Product datasheet for RC200707

NAGA (NM_000262) Human Tagged ORF Clone

Product data:

Product Type:	Expression Plasmids
Product Name:	NAGA (NM_000262) Human Tagged ORF Clone
Tag:	Myc-DDK
Symbol:	NAGA
Synonyms:	D22S674; GALB
Mammalian Cell Selection:	Neomycin
Vector:	pCMV6-Entry (PS100001)
E. coli Selection:	Kanamycin (25 ug/mL)
ORF Nucleotide Sequence:	>RC200707 ORF sequence Red=Cloning site Blue=ORF Green=Tags(s)

TTTTGTAATACGACTCACTATAGGGCGGCCGGAATTCGTCGACTGGATCCGGTACCGAGGAGATCTGCC
GCC**CGATCGCC**

ATGCTGCTGAAGACAGTCTCTTGGCTGGGACATGTGGCCAGGTGCTGATGCTGGACAATGGGCTCCTGC
AGACACCACCCATGGGCTGGCTGGCCTGGGAACGCTTCCGCTGCAACATTAAGTGTGATGAGGACCCAAA
GAACTGCATAAGTGAACAGCTCTTCATGGAGATGGCTGACCGGATGGCACAGGATGGATGGCGGGACATG
GGCTACACATACCTCAACATTGATGACTGCTGGATCGGTGGTCCGATGCCAGTGGCCGCTGATGCCAG
ATCCCAAGCGCTCCCTCATGGCATTCTTCCCTGGCTGACTACGTTCACTCCCTGGGCTGAAGTTGGG
TATCTACGCGGACATGGGCAACTTCACCTGCATGGGTTACCCAGGCACCACACTGGACAAGTGGTCCAG
GATGCTCAGACCTTCGCGAGTGAAGGTAGACATGCTCAAGCTGGATGGCTGCTTCCACCCCGAGG
AGCGGGCCAGGGGTACCCCAAGATGGCTGCTGCCCTGAATGCCACAGGCCGCCCATCGCCTTCTCCTG
CAGCTGGCCAGCCTATGAAGGCGGCTCCCGCCAGGGTGAACACAGTCTGCTGGCGGACATCTGCAAC
CTCTGGCGTAACTATGATGACATCCAGGACTCTGGTGGAGCGTCTCCATCTGAATTGGTTCTGTTG
AGCACCAGGACATACTGCAGCCAGTGGCCGGCCCTGGGCACTGGAATGACCCTGACATGCTGCTCATTGG
GAACTTTGGTCTCAGCTTAGAGCAATCCCGGGCCAGATGGCCCTGTGGACGGTCTGGCAGCCCCCTC
TTGATGTCCACAGACCTCGTACCATCTCCGCCAGAACATGGACATTCTGCAGAATCCACTCATGATCA
AAATCAACCAGGATCCCTTAGGCATCCAGGACGCAGGATTCACAAGGAAAAATCTCATCGAAGTGTA
CATGCGGCTCTGTCCAACAAGGCTAGCGCCTTAGTCTTCTCAGCTGCAGGACCGATATGCCTTATCGC
TACCCTCCTCCCTGGCCAGCTGAACTTCACCGGTCTGTGATATATGAGGCCAGGACGCTACTCAG
GTGACATCATCAGTGGCCTCCGAGATGAAACCACTTCACAGTGATCATCAACCTTCAGGGGTAGTGAT
GTGGTACCTGTATCCCATCAAGAACCTGGAGATGTCCAGCAG

ACGGTACGCGGCCGCTCGAGCAGAACTCATCTCAGAAGAGGATCTGGCAGCAATGATATCCTGGATT
ACAAGGATGACGACGATAAGGTTAA



[View online »](#)

Reconstitution Method:

1. Centrifuge at 5,000xg for 5min.
2. Carefully open the tube and add 100ul of sterile water to dissolve the DNA.
3. Close the tube and incubate for 10 minutes at room temperature.
4. Briefly vortex the tube and then do a quick spin (less than 5000xg) to concentrate the liquid at the bottom.
5. Store the suspended plasmid at -20°C. The DNA is stable for at least one year from date of shipping when stored at -20°C.

RefSeq: [NM_000262.3](#)

RefSeq Size: 3726 bp

RefSeq ORF: 1236 bp

Locus ID: 4668

UniProt ID: [P17050](#)

Cytogenetics: 22q13.2

Domains: Melibiase

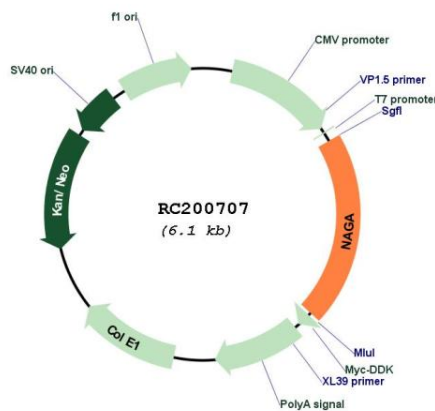
Protein Families: Druggable Genome

Protein Pathways: Glycosphingolipid biosynthesis - globo series, Lysosome

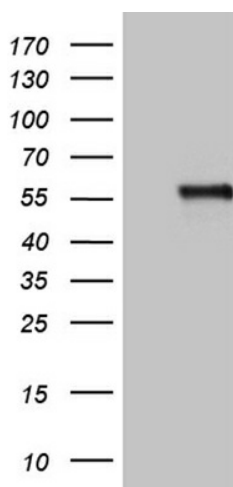
MW: 46.6 kDa

Gene Summary: NAGA encodes the lysosomal enzyme alpha-N-acetylgalactosaminidase, which cleaves alpha-N-acetylgalactosaminyl moieties from glycoconjugates. Mutations in NAGA have been identified as the cause of Schindler disease types I and II (type II also known as Kanzaki disease). [provided by RefSeq, Jul 2008]

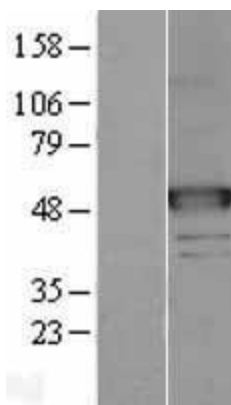
Product images:



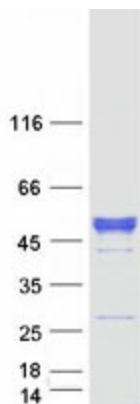
Circular map for RC200707



HEK293T cells were transfected with the pCMV-ENTRY control (Cat# [PS100001], Left lane) or pCMV6-ENTRY NAGA (Cat# RC200707, Right lane) cDNA for 48 hrs and lysed. Equivalent amounts of cell lysates (5 ug per lane) were separated by SDS-PAGE and immunoblotted with anti-NAGA (Cat# [TA811320])(1:500). Positive lysates [LY400100] (100ug) and [LC400100] (20ug) can be purchased separately from OriGene.



Western blot validation of overexpression lysate (Cat# [LY400100]) using anti-DDK antibody (Cat# [TA50011-100]). Left: Cell lysates from untransfected HEK293T cells; Right: Cell lysates from HEK293T cells transfected with RC200707 using transfection reagent MegaTran 2.0 (Cat# [TT210002]).



Coomassie blue staining of purified NAGA protein (Cat# [TP300707]). The protein was produced from HEK293T cells transfected with NAGA cDNA clone (Cat# RC200707) using MegaTran 2.0 (Cat# [TT210002]).