

## Product datasheet for **RC200705**

### Neuromedin B (NMB) (NM\_021077) Human Tagged ORF Clone

#### Product data:

**Product Type:** Expression Plasmids  
**Product Name:** Neuromedin B (NMB) (NM\_021077) Human Tagged ORF Clone  
**Tag:** Myc-DDK  
**Symbol:** Neuromedin B  
**Mammalian Cell Selection:** Neomycin  
**Vector:** pCMV6-Entry (PS100001)  
**E. coli Selection:** Kanamycin (25 ug/mL)  
**ORF Nucleotide Sequence:** >RC200705 ORF sequence  
Red=Cloning site Blue=ORF Green=Tags(s)

TTTTGTAATACGACTCACTATAGGGCGGCCGGAATTCGTCGACTGGATCCGGTACCGAGGAGATCTGCC  
GCC**CGATCGCC**

ATGGCCCCGGGGCGGGGGCGCTCGGATGTTCCGGCAGCCTCCTGCTCTTCGCCCTGCTCGCTGCCGGCG  
TCGCCCCGCTCAGCTGGGATCTCCCGAGCCCCGAGCCGAGCCAGCAAGATCCGAGTGCCTCGCGAGG  
CAACCTCTGGGCCACCGTCACTTCATGGGCAAGAAGAGTCTGGAGCCTCCAGCCCATCCCCATTGGGG  
ACAGTACCCACACCTCCCTGAGGGACCAGCGACTGCAGCTGAGTCATGATCTGCTCGGAATCCTCCTGC  
TAAAGAAGGCTCTGGGCGTGAGCCTCAGCCGCCCGCACCCCAAATCCAGGAGGCTGCTGGTACAAATAC  
TGCAGAAATGACACCAATAATGGGGCAGACACAACAGCGTGGCTTAGATTGTGCCACCCAGGGAAGGTG  
CTGAATGGGACCCTGTTGATGGCCCCATCTGGATGTAATCC

**ACGCGT**ACGCGGCCGCTCGAGCAGAACTCATCTCAGAAGAGGATCTGGCAGCAAATGATATCCTGGATT  
ACAAGGATGACGACGATAAGGTTTAA

**Protein Sequence:** >RC200705 protein sequence  
Red=Cloning site Green=Tags(s)

MARRAGGARMFGSLLLFALLAAGVAPLSWDLPEPRSRASKIRVHSRGNLWATGHFMGKKSLEPSSPSPLG  
TATHSLRDQRLQLSHDLLGILLKKALGVSLSRPAPQIQEAAGTNTAEMTPIMGQTQQRGLDCAHPGKV  
LNGTLLMAPSGCKS

**TR**TRPLEQKLI SEEDLAANDILDYKDDDDKV

**Chromatograms:** [https://cdn.origene.com/chromatograms/mk6144\\_d04.zip](https://cdn.origene.com/chromatograms/mk6144_d04.zip)

**Restriction Sites:** SgfI-MluI



[View online >](#)

**Cloning Scheme:**


**ACCN:** NM\_021077

**ORF Size:** 999 bp

**OTI Disclaimer:** The molecular sequence of this clone aligns with the gene accession number as a point of reference only. However, individual transcript sequences of the same gene can differ through naturally occurring variations (e.g. polymorphisms), each with its own valid existence. This clone is substantially in agreement with the reference, but a complete review of all prevailing variants is recommended prior to use. [More info](#)

**OTI Annotation:** This clone was engineered to express the complete ORF with an expression tag. Expression varies depending on the nature of the gene.

**Components:** The ORF clone is ion-exchange column purified and shipped in a 2D barcoded Matrix tube containing 10ug of transfection-ready, dried plasmid DNA (reconstitute with 100 ul of water).

- Reconstitution Method:**
1. Centrifuge at 5,000xg for 5min.
  2. Carefully open the tube and add 100ul of sterile water to dissolve the DNA.
  3. Close the tube and incubate for 10 minutes at room temperature.
  4. Briefly vortex the tube and then do a quick spin (less than 5000xg) to concentrate the liquid at the bottom.
  5. Store the suspended plasmid at -20°C. The DNA is stable for at least one year from date of shipping when stored at -20°C.

**RefSeq Size:** 1046 bp

**RefSeq ORF:** 366 bp

**Locus ID:** 4828

**UniProt ID:** [P08949](#)

**Cytogenetics:** 15q25.2

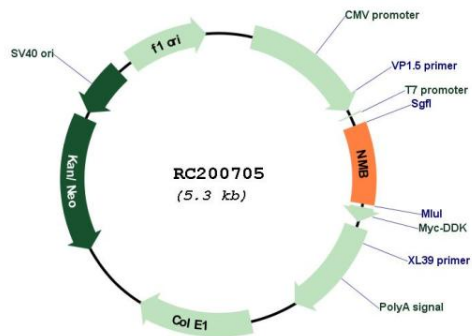
**Domains:** Bombesin

**Protein Families:** Secreted Protein, Transmembrane

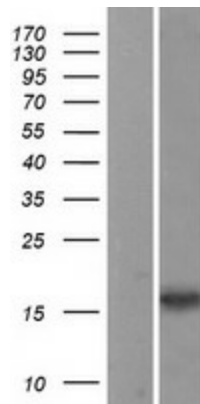
**MW:** 16.3 kDa

**Gene Summary:** This gene encodes a member of the bombesin-like family of neuropeptides, which negatively regulate eating behavior. The encoded protein may regulate colonic smooth muscle contraction through binding to its cognate receptor, the neuromedin B receptor (NMBR). Polymorphisms of this gene may be associated with hunger, weight gain and obesity. Alternative splicing results in multiple transcript variants. [provided by RefSeq, Jul 2015]

**Product images:**



Circular map for RC200705



Western blot validation of overexpression lysate (Cat# [LY402828]) using anti-DDK antibody (Cat# [TA50011-100]). Left: Cell lysates from untransfected HEK293T cells; Right: Cell lysates from HEK293T cells transfected with RC200705 using transfection reagent MegaTran 2.0 (Cat# [TT210002]).