

Product datasheet for **RC200700**

PML Protein (PML) (NM_033250) Human Tagged ORF Clone

Product data:

Product Type:	Expression Plasmids
Product Name:	PML Protein (PML) (NM_033250) Human Tagged ORF Clone
Tag:	Myc-DDK
Symbol:	PML Protein
Synonyms:	MYL; PP8675; RNF71; TRIM19
Mammalian Cell Selection:	Neomycin
Vector:	pCMV6-Entry (PS100001)
E. coli Selection:	Kanamycin (25 ug/mL)



[View online »](#)

ORF Nucleotide
Sequence:

>RC200700 representing NM_033250
Red=Cloning site Blue=ORF Green=Tags(s)

TTTTGTAATACGACTCACTATAGGGCGGCCGGGAATTCGTCGACTGGATCCGGTACCGAGGAGATCTGCC
GCC**CGCATCGCC**

ATGGAGCCTGCACCCGCCGATCTCCGAGGCCAGCAGGACCCGCCCGCCAGGAGCCACCATGC
CTCCCCCGAGACCCCTCTGAAGGCCGCCAGCCAGCCAGCCAGCCCTACAGAGCGAGCCCGC
TTCGGAGGAGGATTCCAGTTTCTGCGCTGCCAGCAATGCCAGGCGGAAGCCAAGTGCCGAAGCTGCTG
CCTTGTCTGCACACGCTGTGCTCAGGATGCCTGGAGGCGTCGGGCATGCAGTGCCCCATCTGCCAGGCGC
CCTGGCCCTAGGTGCAGACACCCGCCCTGGATAACGTCTTTTTCGAGAGTCTGCAGCGGCGCCTGTC
GGTGTACCGGCAGATTGTGGATGCGCAGGCTGTGTGCACCCGCTGCAAAGAGTCGGCCGACTTCTGGTGC
TTTGAGTGCAGCAGCTCCTCTGCGCAAGTGCTTCGAGGCACACCAGTGGTTCCCTAAGCAGGAGGCC
GGCCCTAGCAGAGCTGCGCAACCAGTCGGTGCCTGAGTTCTGGACGGCACCCGCAAGACCAACAACAT
CTTCTGCTCCAACCCCAACCACCGACCCCTACGCTGACCAGCATCTACTGCCGAGGATGTTCCAAGCCG
CTGTGCTGCTCGTGCAGCCTCTTGACAGCAGCCACAGTGATCTCAAGTGCAGACATCAGCCGAGAGATCC
AGCAGCGACAGGAGGAGCTGGACGCCATGACGCAGGCGCTGCAGGAGCAGGATAGTGCCTTTGGCCGGT
TCACGCGCAGATGCACGCGGTTGTGCGCCAGCTGGGCCGCGCGCTGCCGAGACCAGGAGCTGATCCGC
GAGCGCTGCGCCAGGTGGTAGCTCACGTGCGGGCTCAGGAGCGCGAGCTGCTGGAGGCTGTGGACGCGC
GGTACCAGCGGACTACGAGGAGATGGCAGTCGGCTGGGCCGCTGGATGCTGTGCTGCAGCGCATCCG
CACGGGACGCGCCTGGTGCAGAGGATGAAGTGTACGCTCGGACCAGGAGGCTGGACATGCACGGT
TTCTGCGCCAGGCGCTCTGCCGCTGCGCCAGGAGGCCAGAGCCTGCAAGCTGCCGTGCGCACCG
ATGGCTTCGACGAGTTCAAGGTGCGCTGCAGGACCTCAGCTCTTGATCACCCAGGGAAAGATGCAGC
TGTATCCAAGAAAAGCCAGCCAGAGGCTGCCAGCACTCCAGGGACCCTATTGACGTTGACCTGGATGTC
TCCAATACAACGACAGCCAGAAGAGGAAGTGCAGCCAGACCCAGTGCCCGAGGAAGTCAATCAAGATGG
AGTCTGAGGAGGGGAAGGAGGCAAGGTTGGCTCGGAGCTCCCGGAGCAGCCAGGCCAGCACCTCCA
GGCAGTCTCACCACCCACCTGGATGGACCGCTAGCCCGAGGAGCCCGTCAAGGAAGTGAGGTCTTC
CTGCCAACAGCAACCACGTGGCAGTGGCGCCGGGAGGAGGAGGAAACGCTTGTGGTATCAGCAGCT
CGGAAGACTCAGATGCCGAAAACCTGTCATGGAGCCATGGAGACCGCCGAGCCACAGTCTCGCCAGC
CCACTCTCGCCAGCCACTCCTCGCCAGCCACTCCTCGCCAGTCCAGTCTCTGCTGAGAGCACAAGGA
GCCTCCAGCCTGCCCTGTGGCACATACCACCCCCAGCTTGGCTCCCCACCAGCCGCTGAGCAGGCTG
CCACCCCGATGCTGAGCCTCACAGCGAGCCTCCTGATCACCAGGAGCGCCCTGCCGTCCACCGTGGAT
CCGCTACCTGTTGTACAGAGCACAGAGGCCATCCGCCTTCGCCATGCCCTCCGCTTGCACCCCTCAATTG
CATCGGGCCCTATTCGGACTTGGTCTCCCATGTGGTCCAAGCCAGCACTCCTGCCATCACAGGGCCCC
TCAACCATCCTGCCAATGCCAGGAACATCCTGCCAGCTGCAAAGGGGCATCAGCCACCCACCCGGAT
ACGAGGGGCTGTGCGATCCCGCAGCCGCTCCCTCCGGGCTCCTCCATTTATCCAGTGGCTCAACAAC
TTTTTTGCCCTCCCTTCTCCTCCATGGCTTCCAGCTTGACATGTCTCCGTGGTGGGGCAGGGGAAG
GCAGAGCCAGACTCTTGAGCAGTTGTCCCCCTGGGACTCTGTGAGAGGCTCCATGGAGGCTCTCA
AGTCCAAGTGCTCTGGAAGCCTCTCAATTACATTCCACCACCCTGTGCCCGAAAGGCCCCCATC
AGCCAGTCCAGGCGCCCGTCAAGCAGGCCTC

AGCGGACCGACGCGTACGCGGCCGCTCGAGCAGAACTCATCTCAGAAGAGGATCTGGCAGCAAATGATATCC
TGGATTACAAGGATGACGACGATAAGGTTTAA

Protein Sequence: >RC200700 representing NM_033250
Red=Cloning site Green=Tags(s)

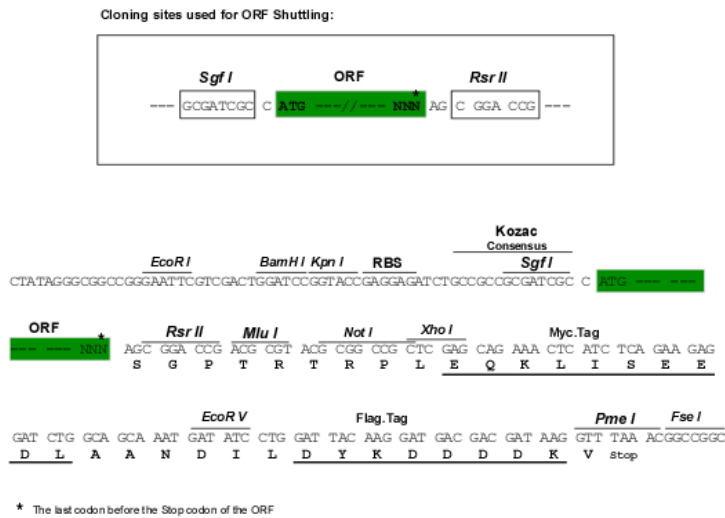
MEPAPARSPRPQQDPARPQEPTMPPPETPSEGRQPSPSPSPTERAPASEEEFQFLRCQQCAEAKCPKLL
PCLHTLCSGCLEASGMQCPICQAPWPLGADTPALDNVFFESLQRRLSVYRQIVDAQAVCTRCKESADFWC
FECEQLLCAKCFEAHQWFLKHEARPLAELRNQSVREFLDGTRKTNNIFCSNPNHRTPTLTSIYCRGCSKP
LCCSCALLDSSHSDLKCDISAEIQRQEELDAMTQALQEQDSAFGAVHAQMHAVVGQLGRARAETEELIR
ERVVRQVVAHVRAQERELLEAVDARYQRDYEEMASRLGRLDAVLQRIRTGSALVQRMKCYASDQEVLDMHG
FLRQALCRLRQEEPQSLQAAVRTDGFDEFKVRQLDLSSCITQGGKDAAVSKKASPEAASTPRDPIDVDLDV
SNTTTAQKRKCSQTQCPRKVIKMESEEGKEARLARSSPEQPRPSTSKAVSPPHLDGPPSPRPVIGSEVF
LPNSNHVASGAGEAEERVVVISSESDSAENSCMEPMETAEPQSSPAHSSPAHSSPAHSSPVQSLRAQG
ASSLPCGTYHPPAWPPHQPAEQAAATPDAEPHSEPPDHQERPAVHRGIRYLLYRAQRAIRLRHALRLHPQL
HRAPIRTWSPHVQASTPAITGPLNHPANAQEHPAQLQRGISPPHRIRGAVRSRSRSLRGSSHLSQWLNN
FFALPFSMASQLDMSSVVGAGEGRAQTLGAVVPPGDSVRSMEASQVQVPLEASPIITFPPPCAPERPPI
SPVPGARQAGL

SGPTRRRLEQKLISEEDLAANDILDYKDDDDKV

Chromatograms: https://cdn.origene.com/chromatograms/mg4220_f10.zip

Restriction Sites: Sgfl-RsrII

Cloning Scheme:



ACCN: NM_033250

ORF Size: 2343 bp

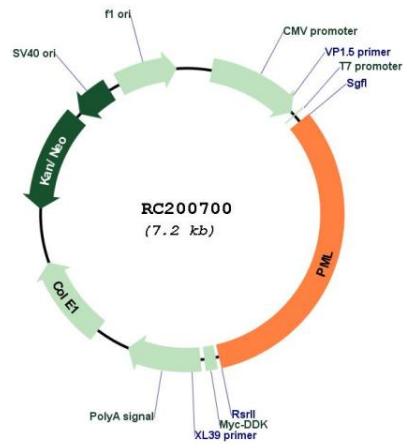
OTI Disclaimer: The molecular sequence of this clone aligns with the gene accession number as a point of reference only. However, individual transcript sequences of the same gene can differ through naturally occurring variations (e.g. polymorphisms), each with its own valid existence. This clone is substantially in agreement with the reference, but a complete review of all prevailing variants is recommended prior to use. [More info](#)

OTI Annotation: This clone was engineered to express the complete ORF with an expression tag. Expression varies depending on the nature of the gene.

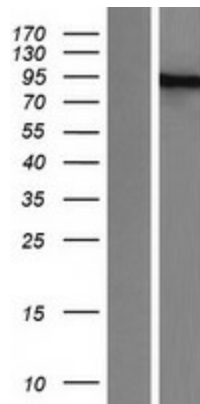
Components: The ORF clone is ion-exchange column purified and shipped in a 2D barcoded Matrix tube containing 10ug of transfection-ready, dried plasmid DNA (reconstitute with 100 ul of water).

Reconstitution Method:	<ol style="list-style-type: none">1. Centrifuge at 5,000xg for 5min.2. Carefully open the tube and add 100ul of sterile water to dissolve the DNA.3. Close the tube and incubate for 10 minutes at room temperature.4. Briefly vortex the tube and then do a quick spin (less than 5000xg) to concentrate the liquid at the bottom.5. Store the suspended plasmid at -20°C. The DNA is stable for at least one year from date of shipping when stored at -20°C.
RefSeq:	NM_033250.3
RefSeq Size:	2944 bp
RefSeq ORF:	2346 bp
Locus ID:	5371
UniProt ID:	P29590
Cytogenetics:	15q24.1
Protein Families:	Druggable Genome, Transcription Factors
Protein Pathways:	Acute myeloid leukemia, Pathways in cancer, Ubiquitin mediated proteolysis
MW:	85.6 kDa
Gene Summary:	<p>The protein encoded by this gene is a member of the tripartite motif (TRIM) family. The TRIM motif includes three zinc-binding domains, a RING, a B-box type 1 and a B-box type 2, and a coiled-coil region. This phosphoprotein localizes to nuclear bodies where it functions as a transcription factor and tumor suppressor. Its expression is cell-cycle related and it regulates the p53 response to oncogenic signals. The gene is often involved in the translocation with the retinoic acid receptor alpha gene associated with acute promyelocytic leukemia (APL). Extensive alternative splicing of this gene results in several variations of the protein's central and C-terminal regions; all variants encode the same N-terminus. Alternatively spliced transcript variants encoding different isoforms have been identified. [provided by RefSeq, Jul 2008]</p>

Product images:



Circular map for RC200700



Western blot validation of overexpression lysate (Cat# [LY409655]) using anti-DDK antibody (Cat# [TA50011-100]). Left: Cell lysates from untransfected HEK293T cells; Right: Cell lysates from HEK293T cells transfected with RC200700 using transfection reagent MegaTran 2.0 (Cat# [TT210002]).