

## Product datasheet for RC200697

### RENBP (NM\_002910) Human Tagged ORF Clone

#### Product data:

Product Type:	Expression Plasmids
Product Name:	RENBP (NM_002910) Human Tagged ORF Clone
Tag:	Myc-DDK
Symbol:	RENBP
Synonyms:	RBP; RNBP
Mammalian Cell Selection:	Neomycin
Vector:	pCMV6-Entry (PS100001)
E. coli Selection:	Kanamycin (25 ug/mL)
ORF Nucleotide Sequence:	>RC200697 ORF sequence Red=Cloning site Blue=ORF Green=Tags(s)

TTTTGTAATACGACTCACTATAGGGCGCCGGGAATTCGTCGACTGGATCCGGTACCGAGGAGATCTGCC  
GCC**CGGATCGCC**

ATGGAGAAAGAGCGAGAGACTCTGCAGGCCTGGAAGGAGCGCGTGGGGCAGGAGCTGGACCGGTGGTGG  
CTTTCTGGATGGAGCACTCCACGACCAGGAGCACGGGGGCTTTCACGTGCCTTGGCCGCGAGGGGCG  
GGTGTATGATGACCTCAAGTATGTGTGGCTGCAGGGGAGGCAGGTATGGATGATTGTCGCTGTACCGC  
ACTTTCGAGCGCTTCCGCATGCTCAGCTTCTGGACGCAGAAAAGCAGGTGGTGAAGTCTTCTGCTCGGT  
ATGCCCGGTGGCACCTCCTGGCAAGAAGTGTGCCTTTGTGCTGACTCGGGACGGCCGCCGGTCAAGGT  
GCAGCGAACCATCTTCAGTGAGTGTTCACACCATGGCCATGAACGAGCTGTGGAGAGCCACAGGGGAA  
GTGCGGTACCAGACGGAAGCGGTGGAGATGATGGATCAGATCGTCCACTGGGTGCAGGAGACGCGTCCG  
GACTGGGCCGGCCCCAGCTCCAGGGGGCCCCGGCTGCGGAGCCCATGGCGGTGCCCATGATGCTACTGAA  
CCTGGTGGAGCAGCTCGGGGAGGCAGATGAGGAGCTGGCGGGCAAATACGCAGAGCTGGGGGACTGGTGC  
GCCCCGAGGATTCTGCAGCAGTGCAGAGGGATGGACAAGCTGTGCCGGAATGTGTGACAGGGTGGCA  
AGGAACTTCTGGCTGCCTGGGAGACAGCAGAACCAGGCCACACGCTGGAAGCCGGCTGGTTTCTGCT  
CCGTATTGCATTGGAAGGCGACCCCGAAGTTCGAGCCACGTGATTGACAAGTTCCTATTGTTGCC  
TTCCACTCCGGATGGGACCCTGACCACGGAGGCCTCTTTACTTCCAGGATGCTGATAACTTCTGCCCA  
CCCAGCTGGAGTGGCCATGAAGCTCTGGTGGCCACACAGTGAAGCCATGATTGCCTTCTCATGGGTTA  
CAGTGACAGTGGGACCCTGTGCTGCTGCGCCTTCTTACCAAGTGGCTGAGTACACCTCCGCCAGTTT  
CGCGATCCCGAGTACGGGAATGGTTTGGCTACCTGAGCCGAGAGGGCAAGGTGGCCCTCTCATCAAGG  
GAGGTCTTTCAAAGGCTGCTTCCACGTGCCGCGGTGCCTAGCCATGTGCGAGGAGATGCTGGGCCCTT  
GCTGAGCCGCCCGCCCCCGCCCCCTCCCCGCCCCACCCCGCCTGCCGAGGCGCGAA

AG**CGGACCG**ACGCGTACGCGCCGCTCGAGCAGAACTCATCTCAGAAGAGGATCTGGCAGCAAATGATATCC  
TGGATTACAAGGATGACGACGATAAGGTTTAA



[View online >](#)

**Protein Sequence:** >RC200697 protein sequence  
 Red=Cloning site Green=Tags(s)

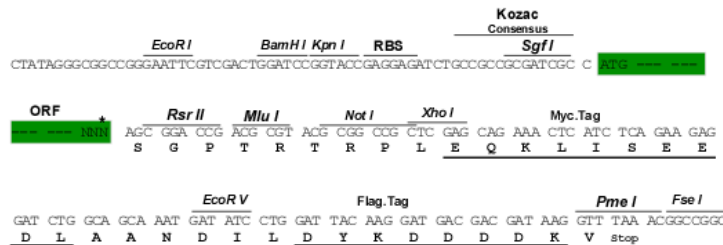
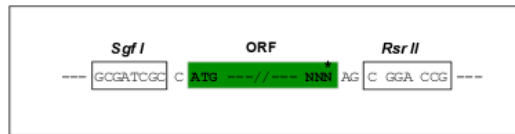
```
MEKERETLQAWKERVQELDRVAVFWEHSHDQEHGFFFTCLGREGRVYDDLKYVWLQGRQVWMYCRLYR
TFERFRHAQLLDAKAGGEFLLRVYARVAPPKGCFAVLTRDGRPVKVQRTIFSECFYTMAMNELWRATGE
VRYQTEAVEMMDQIVHWVQEDASGLGRPQLQGAPAAEPMAVPMMLNLVEQLGEADEELAGKYAELGDWC
ARRILQHVQRDQAVPENYSEGKELPGCLGRQONPGHTLEAGWFLLRHCIRKGDPELRAHVIDKFLLLP
FHSGWDPDHGGLFYFQADNFCPTQLEWAMKLWPHSEAMIAFLMGYSDSGDPVLLRLFYQVAEYTRFQF
RDPEYGEWFGYLSREGKVALSIKGGPFKGFHVPRCLAMCEMLGALLSRPAPAPSPAPTPACRGAE
```

SGPTRTRPLEQKLISEEDLAANDILDYKDDDDKV

**Restriction Sites:** SgfI-RsrII

**Cloning Scheme:**

Cloning sites used for ORF Shutting:



\* The last codon before the Stop codon of the ORF

**ACCN:** NM\_002910

**ORF Size:** 1251 bp

**OTI Disclaimer:** The molecular sequence of this clone aligns with the gene accession number as a point of reference only. However, individual transcript sequences of the same gene can differ through naturally occurring variations (e.g. polymorphisms), each with its own valid existence. This clone is substantially in agreement with the reference, but a complete review of all prevailing variants is recommended prior to use. [More info](#)

**OTI Annotation:** This clone was engineered to express the complete ORF with an expression tag. Expression varies depending on the nature of the gene.

**Components:** The ORF clone is ion-exchange column purified and shipped in a 2D barcoded Matrix tube containing 10ug of transfection-ready, dried plasmid DNA (reconstitute with 100 ul of water).

**Reconstitution Method:**

1. Centrifuge at 5,000xg for 5min.
2. Carefully open the tube and add 100ul of sterile water to dissolve the DNA.
3. Close the tube and incubate for 10 minutes at room temperature.
4. Briefly vortex the tube and then do a quick spin (less than 5000xg) to concentrate the liquid at the bottom.
5. Store the suspended plasmid at -20°C. The DNA is stable for at least one year from date of shipping when stored at -20°C.

**RefSeq:** [NM\\_002910.6](#)

**RefSeq Size:** 1507 bp

**RefSeq ORF:** 1284 bp

**Locus ID:** 5973

**UniProt ID:** [P51606](#)

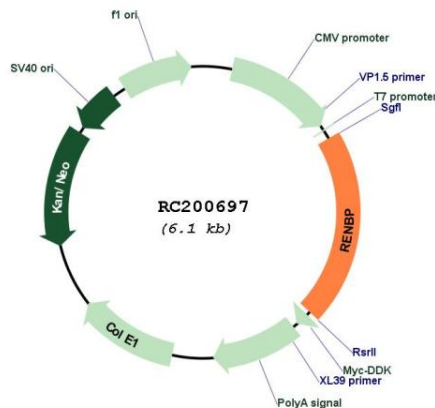
**Cytogenetics:** Xq28

**Protein Pathways:** Amino sugar and nucleotide sugar metabolism

**MW:** 47.7 kDa

**Gene Summary:** The gene product inhibits renin activity by forming a dimer with renin, a complex known as high molecular weight renin. The encoded protein contains a leucine zipper domain, which is essential for its dimerization with renin. The gene product can catalyze the interconversion of N-acetylglucosamine to N-acetylmannosamine, indicating that it is a GlcNAc 2-epimerase. Transcript variants utilizing alternative promoters have been described in the literature. [provided by RefSeq, Jul 2008]

### Product images:



Circular map for RC200697