

Product datasheet for **RC200690**

NF2 (NM_181830) Human Tagged ORF Clone

Product data:

Product Type:	Expression Plasmids
Product Name:	NF2 (NM_181830) Human Tagged ORF Clone
Tag:	Myc-DDK
Symbol:	NF2
Synonyms:	ACN; BANF; merlin-1; SCH
Mammalian Cell Selection:	Neomycin
Vector:	pCMV6-Entry (PS100001)
E. coli Selection:	Kanamycin (25 ug/mL)



[View online »](#)

ORF Nucleotide Sequence:

>RC200690 ORF sequence
 Red=Cloning site Blue=ORF Green=Tags(s)

TTTTGTAATACGACTCACTATAGGGCGGCCGGAATTCGTCGACTGGATCCGGTACCGAGGAGATCTGCC
 GCC**CGATCGCC**

ATGGCCGGGGCCATCGTTCCCGCATGAGCTTCAGCTCTCTCAAGAGGAAGCAACCCAAGACGTTACCCG
 TGAGGATCGTCACCATGGACGCCGAGATGGAGTTCATTGCGAGGTAAAGAAGCAGATTTTATAGTAAAA
 GATCTACTGCCCTCTGAGGCTTCTGTGCTCCTGGCTTCTACGCCGTCCAGGCCAAGTATGGTACTAC
 GACCCAGTGTTCAAGCGGGATTTTTGGCCCAAGAGGAATTGCTTCCAAAAAGGTAATAAATCTGT
 ATCAGATGACTCCGAAATGTGGGAGGAGAGAATTACTGCTTGGTACGCAGAGCACCGAGGCCGAGCCAG
 GGATGAAGCTGAAATGGAATATCTGAAGATAGCTCAGGACCTGGAGATGTACGGTGTGAACACTTTGCA
 ATCCGGAATAAAAAGGCCACAGAGCTGTGCTTGGAGTGGATGCCCTGGGCTTACATTTATGACCCTG
 AGAACAGACTGACCCCAAGATCTCTTCCCGTGAATGAAATCCGAAACATCTCGTACAGTGACAAGGA
 GTTTACTATTAACCCTGGATAAGAAAATTGATGTCTTCAAGTTAACTCCTCAAAGCTTCGTGTTAAT
 AAGCTGATTCCTCAGCTATGTATCGGGAACCATGATCTATTTATGAGGAGAAGGAAAGCCGATTCTTTGG
 AAGTTCAGCAGATGAAAGCCCAGGCCAGGGAGGAGAAGGCTAGAAAGCAGATGGAGCGCCAGCGCTCGC
 TCGAGAGAAGCAGATGAGGGAGGAGGCTGAACGCACGAGGGATGAGTTGGAGAGGAGGCTGCTGCAGATG
 AAAGAAGAAGCAACAATGGCCAACGAAGCACTGATGCGGTCTGAGGAGACAGCTGACCTGTTGGCTGAAA
 AGGCCAGATCACCGAGGAGGAGGCAAACTTCTGGCCAGAAGGCCGACAGGCTGAGCAGGAAATGCA
 GCGCATCAAGGCCACAGCGATTCGCACGGAGGAGGAGAAGCGCTGATGGAGCAGAAGGTGCTGGAAGCC
 GAGGTGCTGGCACTGAAGATGGCTGAGGAGTCAAGAGGAGGGCCAAAGAGGCAGATCAGCTGAAGCAGG
 ACCTGCAGGAAGCACGCGAGGCGAGCGAAGAGCCAAAGCAGAAGCTCCTGGAGATTGCCACCAAGCCAC
 GTACCCGCCATGAACCAATTCCAGCACCGTTGCCTCCTGACATACCAAGCTTCAACCTATTGGTGAC
 AGCCTGTCTTTCGACTTCAAAGATACTGACATGAAGCGGCTTTCATGGAGATAGAGAAAAGAAAAGTGG
 AATACATGAAAAGAGCAAGCATCTGCAGGAGCAGCTCAATGAACTCAAGACAGAAATCGAGGCCTTGAA
 ACTGAAAGAGAGGGAGACAGCTCTGGATATTCTGCACAAATGAGAACTCCGACAGGGGTGGCAGCAGCAAG
 CACAATACCATAAAAAGCCTCAAGCCCAAGGCAGAAGACCTATCTGCATT

ACGCGTACGCGGCCGCTCGAGCAGAACTCATCTCAGAAGAGGATCTGGCAGCAAATGATATCCTGGATT
 ACAAGGATGACGACGATAAGGTTTAA

Protein Sequence:

>RC200690 protein sequence
 Red=Cloning site Green=Tags(s)

MAGAIASRMSFSSLKRKQPKFTFVRIVTMDAEMEFNCEVKKQILDEKIYCPPEASVLLASYAVQAKYGDY
 DPSVHKRGFLAQEELLPKRVINLYQMTPEMWEERITAWYAEHRGRARDEAEMEYLKIAQDLEMYGVNYFA
 IRNKKGTELLLGVDALGLHIYDPENRLTPKISFPWNEIRNISYSDFEFTIKPLDKKIDVFKFNSSKLRVN
 KLILQLCIGNHDLFMRRRKADSLEVQMQKAQAREEKARKQMERQRLAREKQMRREEAERTRELERLLQM
 KEEATMANEALMRSEETADLLAEKAQITEEEAKLLAQKAAEAQEMQRIKATAIRTEEEKRLMEQKVLEA
 EVLALKMAEESERRAKEADQLKQDLQEAREARRAKQKLEIATKPTYPPMNPAPLPPDIPSNLIGD
 SLSFDFKDTDMKRLSMEIEKEKVEYMEKSKHLQEQLNELKTEIEALKKERETALDILHNENSDRGGSSK
 HNTIKKPQAQGRRPICI

TRTRPLEQKLISEEDLAANDILDYKDDDDKV

Chromatograms:

https://cdn.origene.com/chromatograms/mk6588_h01.zip

Restriction Sites:

Sgfl-Mlul

Cloning Scheme:


ACCN: NM_181830

ORF Size: 1521 bp

OTI Disclaimer: The molecular sequence of this clone aligns with the gene accession number as a point of reference only. However, individual transcript sequences of the same gene can differ through naturally occurring variations (e.g. polymorphisms), each with its own valid existence. This clone is substantially in agreement with the reference, but a complete review of all prevailing variants is recommended prior to use. [More info](#)

OTI Annotation: This clone was engineered to express the complete ORF with an expression tag. Expression varies depending on the nature of the gene.

Components: The ORF clone is ion-exchange column purified and shipped in a 2D barcoded Matrix tube containing 10ug of transfection-ready, dried plasmid DNA (reconstitute with 100 ul of water).

Reconstitution Method:

1. Centrifuge at 5,000xg for 5min.
2. Carefully open the tube and add 100ul of sterile water to dissolve the DNA.
3. Close the tube and incubate for 10 minutes at room temperature.
4. Briefly vortex the tube and then do a quick spin (less than 5000xg) to concentrate the liquid at the bottom.
5. Store the suspended plasmid at -20°C. The DNA is stable for at least one year from date of shipping when stored at -20°C.

RefSeq: [NM_181830.3](#)

RefSeq Size: 5842 bp

RefSeq ORF: 1524 bp

Locus ID: 4771

UniProt ID: [P35240](#)

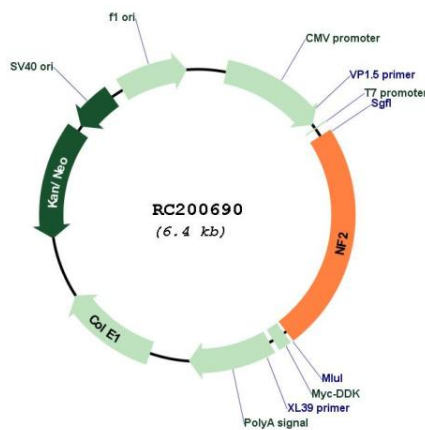
Cytogenetics: 22q12.2

Protein Families: Druggable Genome

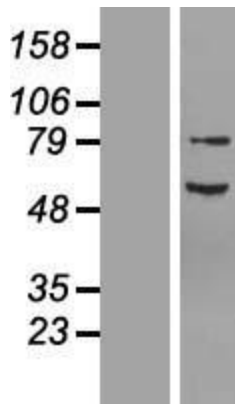
MW: 59.1 kDa

Gene Summary: This gene encodes a protein that is similar to some members of the ERM (ezrin, radixin, moesin) family of proteins that are thought to link cytoskeletal components with proteins in the cell membrane. This gene product has been shown to interact with cell-surface proteins, proteins involved in cytoskeletal dynamics and proteins involved in regulating ion transport. This gene is expressed at high levels during embryonic development; in adults, significant expression is found in Schwann cells, meningeal cells, lens and nerve. Mutations in this gene are associated with neurofibromatosis type II which is characterized by nervous system and skin tumors and ocular abnormalities. Two predominant isoforms and a number of minor isoforms are produced by alternatively spliced transcripts. [provided by RefSeq, Jul 2008]

Product images:



Circular map for RC200690



Western blot validation of overexpression lysate (Cat# [LY405606]) using anti-DDK antibody (Cat# [TA50011-100]). Left: Cell lysates from untransfected HEK293T cells; Right: Cell lysates from HEK293T cells transfected with [RC222487] using transfection reagent MegaTran 2.0 (Cat# [TT210002]).