

Product datasheet for **RC200686**

TCP1 alpha (TCP1) (NM_030752) Human Tagged ORF Clone

Product data:

Product Type:	Expression Plasmids
Product Name:	TCP1 alpha (TCP1) (NM_030752) Human Tagged ORF Clone
Tag:	Myc-DDK
Symbol:	TCP1 alpha
Synonyms:	CCT-alpha; CCT1; CCTa; D6S230E; TCP-1-alpha
Mammalian Cell Selection:	Neomycin
Vector:	pCMV6-Entry (PS100001)
E. coli Selection:	Kanamycin (25 ug/mL)



[View online »](#)

ORF Nucleotide
Sequence:

>RC200686 ORF sequence
Red=Cloning site Blue=ORF Green=Tags(s)

TTTTGTAATACGACTCACTATAGGGCGGCCGGAATTCGTCGACTGGATCCGGTACCGAGGAGATCTGCC
GCCGCGATCGCC

ATGGAGGGGCCTTTGTCCTGTTCGGTGACCCGAGCACTGGGAAACGATCCGCTCCAAAACGTTATGG
CTGCAGCTTCGATTGCCAATATTGTA AAAAGTTCTCTTGGTCCAGTTGGCTTGGATAAAAATTGGTGGA
TGATATTGGTGATGTAACCATTACTAACGATGGTGAACCATCCTGAAGTTACTGGAGGTAGAATCCT
GCAGCTAAAGTTCTTTGTGAGCTGGCTGATCTGCAAGACAAGAAGTTGGAGATGGAACACTTTCAGTGG
TTATTATTGCAGCAGAATCCTAAAAATGCAGATGAATTAGTCAAACAGAAAATTCATCCACATCAGT
TATTAGTGGCTATCGACTTGCTTGAAGGAAGCAGTGCCTTATATCAATGAAAACCTAATTGTTAACACA
GATGAAGTGGGAAGAGATTGCCTGATTAATGCTGCTAAGACATCCATGCTTCCAAAATCATTGGAATAA
ATGGTGATTTCTTTGCTAACATGGTAGTAGATGCTGTACTTGGCTATTAATAACACAGACATAAGAGGCCA
GCCACGCTATCCAGTCAACTCTGTTAATATTTGAAAAGCCATGGGAGAAGTCAAATGGAGAGTATGCTC
ATCAGTGGCTATGCACTCAACTGTGTGGTGGGATCCCAGGGCATGCCAAGAGAATCGTAAATGCAAAAA
TTGCTTGCCCTTGACTTACGCTGCAAAAAACAAAATGAAGCTTGGTGTACAGGTGGTCATTACAGACCC
TGAAAACTGGACCAAATTAGACAGAGAGAATCAGATATCACCAAGGAGAGAATTCAGAAGATCCTGGCA
ACTGGTGCCAATGTTATTCTAACCACTGGTGGAAATGATGATATGTGTCTGAAGTATTTTGTGGAGGCTG
GTGCTATGGCAGTTAGAAGATTTTAAAAAGGGACCTTAAACGCATTGCCAAAGCTTCTGGAGCAACTAT
TCTGTCAACCTGGCCAAATTTGGAAGGTGAAGAACTTTGAAGCTGCAATGTTGGGACAGGCAGAAGAA
GTGGTACAGGAGAGAATTTGTGATGATGAGCTGATCTTAATCAAAAATACTAAGGCTCGTACGCTGCAT
CGATTATCTTACGTGGGCAAATGATTTTCATGTGTGATGAGATGGAGCGCTCTTTACATGTCACCTTTG
TGTAGTGAAGAGAGTTTTGGAGTCAAAATCTGTGGTCCCGGTGGGGGTGCTGTAGAAGCAGCCCTTCC
ATATACCTTGAAAATATGCAACCAAGCATGGGGTCTCGGGAACAGCTTGCATTGCAGAGTTTGAAGAT
CACTTCTGTATTCCCAATACACTAGCAGTTAATGCTGCCAGGACTCCACAGATCTGGTTGCAAAAT
AAGAGCTTTTCATAATGAGGCCAGGTTAACCCAGAACGTAAAAATCTAAAATGGATTGGTCTTGATTTG
AGCAATGGTAAACCTCGAGACAACAACAAGCAGGGGTGTTTGAACCAACCATAGTTAAAGTTAAGAGTT
TGAAAATTTGCAACAGAAGCTGCAATCACCATTCTCGAATTGATGATCTTATTAATTACATCCAGAAAG
TAAAGATGATAAATGGAAGTTATGAAGATGCTGTTCACTCTGGAGCCCTTAATGAT

ACGCGTACGCGGCCGCTCGAGCAGAACTCATCTCAGAAGAGGATCTGGCAGCAAATGATATCCTGGATT
ACAAGGATGACGACGATAAGGTTTAA

Protein Sequence:

>RC200686 protein sequence
Red=Cloning site Green=Tags(s)

MEGPLSVFGDRSTGETIRSQNVMAAASIANIVKSSLGPVGLDKMLVDDIGDVTITNDGATILKLLVEHP
AAKVLCELADLQDKEVGDGTTSVVIIAAELLKNADELVKQKIHPTSVISGYRLACKEAVRYINENLIVNT
DELGRDCLINAAKTSMSSKIIGINGDFFANMVVDAVLAIKYTDIRGQPRYPVNSVNILKAHGRSQMESML
ISGYALNCVVGSQGMPKRIVNAKIACLDFSLQKTKMKLGVQVITDPEKLDQIRQRESKITKERIQKILA
TGANVILTTGGIDDMCLKYFVEAGAMAVRRVLKRDLKRIAKASGATILSTLANLEGEETFEAAMLGQAE
VVQERICDDELILIKNTKARTSASIIIRGANDFMCEMERSLHDALCVVKRVLESKSVVPGGAVEAALS
IYLENYATSMGSREQLIAEFARSLVIPNTLAVNAAQDSTDVAKLRAFHNQAQVNPENKLNKWIGLDL
SNGKPRDNKQAGVFEPTIVKVKSLKFATEAAITILRIDDLIKLHPESKDDKHGSYEDAVHSGALND

TRTRPLEQKLI SEEDLAANDILDYKDDDDKV

Chromatograms:

https://cdn.origene.com/chromatograms/mk6198_f12.zip

Restriction Sites:

Sgfl-MluI

Cloning Scheme:

ACCN: NM_030752

ORF Size: 1668 bp

OTI Disclaimer: Due to the inherent nature of this plasmid, standard methods to replicate additional amounts of DNA in E. coli are highly likely to result in mutations and/or rearrangements. Therefore, OriGene does not guarantee the capability to replicate this plasmid DNA. Additional amounts of DNA can be purchased from OriGene with batch-specific, full-sequence verification at a reduced cost. Please contact our customer care team at custsupport@origene.com or by calling 301.340.3188 option 3 for pricing and delivery.

The molecular sequence of this clone aligns with the gene accession number as a point of reference only. However, individual transcript sequences of the same gene can differ through naturally occurring variations (e.g. polymorphisms), each with its own valid existence. This clone is substantially in agreement with the reference, but a complete review of all prevailing variants is recommended prior to use. [More info](#)

OTI Annotation: This clone was engineered to express the complete ORF with an expression tag. Expression varies depending on the nature of the gene.

Components: The ORF clone is ion-exchange column purified and shipped in a 2D barcoded Matrix tube containing 10ug of transfection-ready, dried plasmid DNA (reconstitute with 100 ul of water).

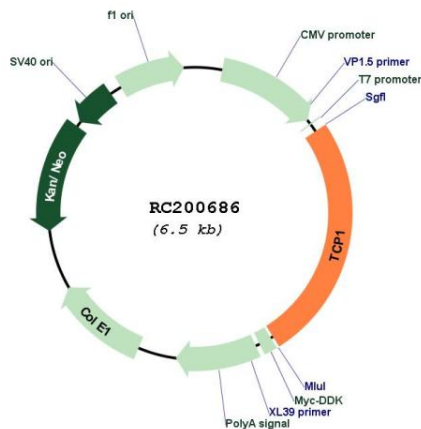
- Reconstitution Method:**
1. Centrifuge at 5,000xg for 5min.
 2. Carefully open the tube and add 100ul of sterile water to dissolve the DNA.
 3. Close the tube and incubate for 10 minutes at room temperature.
 4. Briefly vortex the tube and then do a quick spin (less than 5000xg) to concentrate the liquid at the bottom.
 5. Store the suspended plasmid at -20°C. The DNA is stable for at least one year from date of shipping when stored at -20°C.

RefSeq: [NM_030752.3](#)

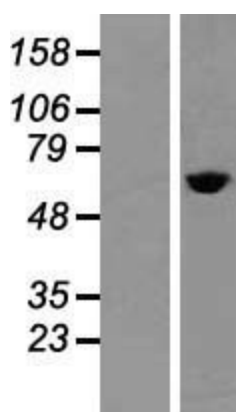
RefSeq Size: 2463 bp
 RefSeq ORF: 1671 bp
 Locus ID: 6950
 UniProt ID: [P17987](#)
 Cytogenetics: 6q25.3
 Domains: cpn60_TCP1
 MW: 60.3 kDa

Gene Summary: The protein encoded by this gene is a molecular chaperone that is a member of the chaperonin containing TCP1 complex (CCT), also known as the TCP1 ring complex (TRiC). This complex consists of two identical stacked rings, each containing eight different proteins. Unfolded polypeptides enter the central cavity of the complex and are folded in an ATP-dependent manner. The complex folds various proteins, including actin and tubulin. Alternate transcriptional splice variants of this gene, encoding different isoforms, have been characterized. In addition, three pseudogenes that appear to be derived from this gene have been found. [provided by RefSeq, Jun 2010]

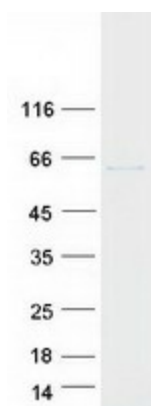
Product images:



Circular map for RC200686



Western blot validation of overexpression lysate (Cat# [LY410733]) using anti-DDK antibody (Cat# [TA50011-100]). Left: Cell lysates from untransfected HEK293T cells; Right: Cell lysates from HEK293T cells transfected with RC200686 using transfection reagent MegaTran 2.0 (Cat# [TT210002]).



Coomassie blue staining of purified TCP1 protein (Cat# [TP300686]). The protein was produced from HEK293T cells transfected with TCP1 cDNA clone (Cat# RC200686) using MegaTran 2.0 (Cat# [TT210002]).