

Product datasheet for **RC200682**

TCN2 (NM_000355) Human Tagged ORF Clone

Product data:

Product Type:	Expression Plasmids
Product Name:	TCN2 (NM_000355) Human Tagged ORF Clone
Tag:	Myc-DDK
Symbol:	TCN2
Synonyms:	D22S676; D22S750; II; TC; TC-2; TC2; TC II; TCII
Mammalian Cell Selection:	Neomycin
Vector:	pCMV6-Entry (PS100001)
E. coli Selection:	Kanamycin (25 ug/mL)



[View online »](#)

ORF Nucleotide Sequence:

>RC200682 ORF sequence
 Red=Cloning site Blue=ORF Green=Tags(s)

TTTTGTAATACGACTCACTATAGGGCGGCCGGAATTCGTCGACTGGATCCGGTACCGAGGAGATCTGCC
 GCC**CGCATCGCC**

ATGAGGCACCTTGGGGCCTTCTCTTCTTCTGGGGTCTGGGGCCCTCACTGAGATGTGTGAATAC
 CAGAGATGGACAGCCATCTGGTAGAGAAGTTGGGCCAGCACCTTACCTTGGATGGACCGCTTCCCT
 GGAGCACTTGAACCCAGCATCTATGTGGGCTACGCCTCTCCAGTCTGCAGGCTGGGACCAAGGAAGAC
 CTCTACCTGCACAGCCTCAAGCTTGGTTACCAGCAGTGCCTCCTAGGGTCTGCCTTCAGCGAGGATGACG
 GTGACTGCCAGGGCAAGCCTTCCATGGGCCAGCTGGCCCTCTACCTGCTCGCTCAGAGCCAAGTGTGA
 GTTTGTCAGGGGCCACAAGGGGGACAGGCTGGTCTCACAGCTCAAATGGTTCCTGGAGGATGAGAAGAGA
 GCCATTGGGCATGATCACAAGGGCCACCCACACTAGCTACTACCAGTATGGCTGGGCATTCTGGCCC
 TGTGTCTCCACCAGAAGCGGGTCCATGACAGCGTGGTGGACAACTTCTGTATGCTGTGGAACCTTTCCA
 CCAGGGCCACCATCTGTGGACACAGCAGCCATGGCAGGCTTGGCATTACCTGTCTGAAGCGCTCAAAC
 TTCAACCTTGGTCGGAGACAACGGATCACCATGGCCATCAGAACAGTGAAGAGGAGATCTGAAGGCC
 AGACCCCGAGGGCCACTTTGGGAATGTCTACAGCACCCATTGGCATTACAGTTCCTCATGACTTCCCC
 CATGCGTGGGGCAGAAGTGGGAACAGCATGTCTCAAGGCGAGGGTTGCTTTGCTGGCCAGTCTGCAGGAT
 GGAGCCTTCCAGAATGCTCTCATGATTTCCAGCTGCTGCCCGTCTGAACCACAAGACCTACATTGATC
 TGATCTTCCAGACTGTCTGGCACCACGAGTCAATGTTGGAACAGCTGCTGAGACCATTCTCAGACCCA
 AGAGATCATCAGTGTACGCTGCAGGTGCTTAGTCTCTTCCGCCGTACAGACAGTCCATCTCTGTTCTG
 GCCGGTCCACCGTGAAGATGTCTGAAGAAGGCCATGAGTTAGGAGGATTACATATGAAACACAGG
 CCTCCTTGTGAGGCCCTACTTAACCTCCGTGATGGGAAAGCGCCGGAGAAAGGGAGTTCTGGCAGCT
 TCTCCGAGACCCCAACCCCACTGTTGCAAGGATTGCTGACTACAGACCCAAGGATGGAGAAACCAT
 GAGCTGAGGCTGGTTAGCTGG

ACGCGTACGCGGCCGCTCGAGCAGAACTCATCTCAGAAGAGGATCTGGCAGCAATGATATCCTGGATT
 ACAAGGATGACGACGATAAGGTTTAA

Protein Sequence:

>RC200682 protein sequence
 Red=Cloning site Green=Tags(s)

MRHLGAFLLGVLGALTEMCEIPEMDSHLVEKLGQHLLPMDRLSLEHLNPSIYVGLRSSLQAGTKED
 LYLHSLKLGYYQCLLGSFAFSEDDGDCQGKPSMGQLALYLLALRANCEFVRGHKGDRLVSLKWFLEDEKR
 AIGHDHKGHPHTSYYQYGLGILALCLHQKRVHDSVVDKLLYAVEPFHQGHHSVDTAAMAGLAFTCLKRSN
 FNPGRQRITMAIRTVQEEILKAQTPGHHFNVYSTPLALQFLMTSPMRGAELGTACLKARVALLASLQD
 GAFQNALMISQLLPVLNPKTYIDLIFPDCLAPRVMLEPAAETIPQTQEIISVTLQVLSLLPPYRQISVL
 AGSTVEDVLLKKAHELGGFTYETQASLSGPYLTSVMGKAAGEREFWQLLRDPNTPLLQGIADYRPKDGETI
 ELRLVSW

TRTRPLEQKLISEEDLAANDILDYKDDDDKV

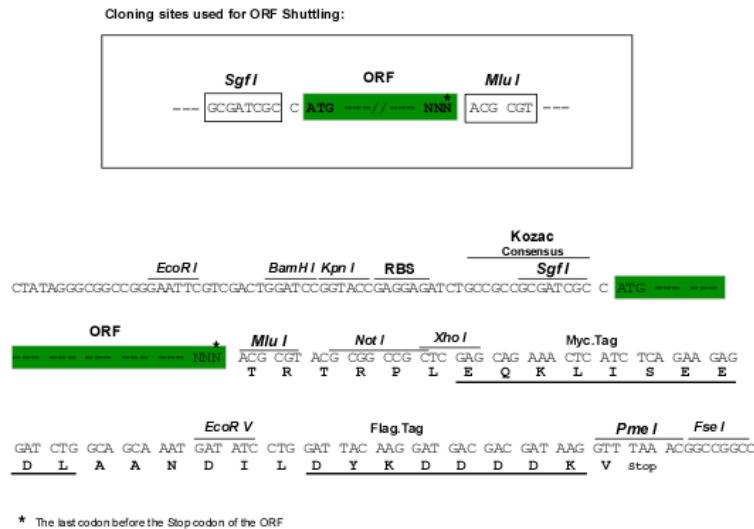
Chromatograms:

https://cdn.origene.com/chromatograms/mk6388_c08.zip

Restriction Sites:

SgfI-MluI

Cloning Scheme:



ACCN: NM_000355

ORF Size: 1281 bp

OTI Disclaimer: The molecular sequence of this clone aligns with the gene accession number as a point of reference only. However, individual transcript sequences of the same gene can differ through naturally occurring variations (e.g. polymorphisms), each with its own valid existence. This clone is substantially in agreement with the reference, but a complete review of all prevailing variants is recommended prior to use. [More info](#)

OTI Annotation: This clone was engineered to express the complete ORF with an expression tag. Expression varies depending on the nature of the gene.

Components: The ORF clone is ion-exchange column purified and shipped in a 2D barcoded Matrix tube containing 10ug of transfection-ready, dried plasmid DNA (reconstitute with 100 ul of water).

Reconstitution Method:

1. Centrifuge at 5,000xg for 5min.
2. Carefully open the tube and add 100ul of sterile water to dissolve the DNA.
3. Close the tube and incubate for 10 minutes at room temperature.
4. Briefly vortex the tube and then do a quick spin (less than 5000xg) to concentrate the liquid at the bottom.
5. Store the suspended plasmid at -20°C. The DNA is stable for at least one year from date of shipping when stored at -20°C.

RefSeq: [NM_000355.4](#)

RefSeq Size: 2104 bp

RefSeq ORF: 1284 bp

Locus ID: 6948

UniProt ID: [P20062](#)

Cytogenetics: 22q12.2

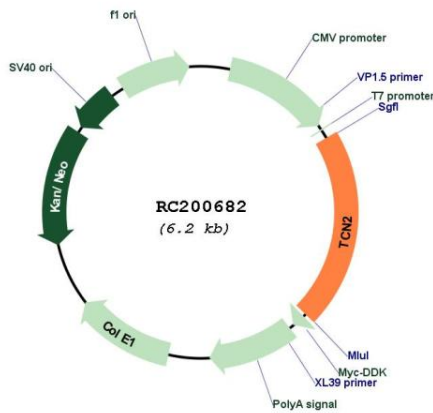
Domains: Cobalamin_bind

Protein Families: Druggable Genome, Secreted Protein

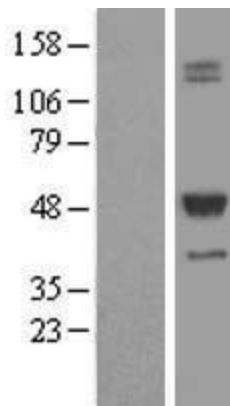
MW: 47.5 kDa

Gene Summary: This gene encodes a member of the vitamin B12-binding protein family. This family of proteins, alternatively referred to as R binders, is expressed in various tissues and secretions. This plasma protein binds cobalamin and mediates the transport of cobalamin into cells. This protein and other mammalian cobalamin-binding proteins, such as transcobalamin I and gastric intrinsic factor, may have evolved by duplication of a common ancestral gene. Alternative splicing results in multiple transcript variants.[provided by RefSeq, May 2010]

Product images:



Circular map for RC200682



Western blot validation of overexpression lysate (Cat# [LY424773]) using anti-DDK antibody (Cat# [TA50011-100]). Left: Cell lysates from untransfected HEK293T cells; Right: Cell lysates from HEK293T cells transfected with RC200682 using transfection reagent MegaTran 2.0 (Cat# [TT210002]).