

## Product datasheet for **RC200678**

### **BTF3 (NM\_001207) Human Tagged ORF Clone**

#### Product data:

**Product Type:** Expression Plasmids  
**Product Name:** BTF3 (NM\_001207) Human Tagged ORF Clone  
**Tag:** Myc-DDK  
**Symbol:** BTF3  
**Synonyms:** BETA-NAC; BTF3a; BTF3b; NACB  
**Mammalian Cell Selection:** Neomycin  
**Vector:** pCMV6-Entry (PS100001)  
**E. coli Selection:** Kanamycin (25 ug/mL)  
**ORF Nucleotide Sequence:** >RC200678 representing NM\_001207  
Red=Cloning site Blue=ORF Green=Tags(s)

TTTTGTAATACGACTCACTATAGGGCGGCCGGAATTCGTCGACTGGATCCGGTACCGAGGAGATCTGCC  
GCC**CGATCGCC**

ATGAAAGAAACAATCATGAACCAGGAAAACTCGCCAACTGCAGGCACAAGTGCGCATTGGTGGGAAAG  
GAACTGCTCGCAGAAAGAAGAAGGTGGTTCATAGAACAGCCACAGCAGATGACAAAAAATTCAGTTCTC  
CTTAAAGAAGTTAGGGGTAACAATATCTCTGGTATTGAAGAGGTGAATATGTTTACAAACCAAGGAACA  
GTGATCCACTTTAAACCCCTAAAGTTCAGGCATCTCTGGCAGCGAACACTTTCACCATTACAGGCCATG  
CTGAGACAAAGCAGCTGACAGAAATGCTACCCAGCATCTTAAACCAGCTTGGTGGGATAGTCTGACTAG  
TTTAAGGAGACTGGCCGAAGCTCTGCCAAACAATCTGTGGATGGAAAAGCACCATTGCTACTGGAGAG  
GATGATGATGATGAAGTTCAGATCTTGTGGAGAATTTTATGAGGCTTCCAAGAATGAGGCAAAC

**ACGCGT**ACGCGGCCGCTCGAGCAGAACTCATCTCAGAAGAGGATCTGGCAGCAAATGATATCCTGGATT  
ACAAGGATGACGACGATAAGGTTTAA

**Protein Sequence:** >RC200678 representing NM\_001207  
Red=Cloning site Green=Tags(s)

MKETIMNQEKLAKLQAQVRIGGKGTARRKKKVVHRTATADDKLQFSLKKGVNNISGIEEVNMFTNQGT  
VIHFNNPKVQASLAANTFTITGHAETKQLTEMLPSILNQLGADSLTSLRRLAEALPKQSDVGKAPLATGE  
DDDDEVPDLVENFDEASKNEAN

**TR**TRPLEQKLISEEDLAANDILDYKDDDDKV

**Chromatograms:** [https://cdn.origene.com/chromatograms/mg4261\\_d10.zip](https://cdn.origene.com/chromatograms/mg4261_d10.zip)



[View online »](#)

Restriction Sites: SgfI-MluI

Cloning Scheme:



ACCN: NM\_001207

ORF Size: 486 bp

OTI Disclaimer: The molecular sequence of this clone aligns with the gene accession number as a point of reference only. However, individual transcript sequences of the same gene can differ through naturally occurring variations (e.g. polymorphisms), each with its own valid existence. This clone is substantially in agreement with the reference, but a complete review of all prevailing variants is recommended prior to use. [More info](#)

OTI Annotation: This clone was engineered to express the complete ORF with an expression tag. Expression varies depending on the nature of the gene.

Components: The ORF clone is ion-exchange column purified and shipped in a 2D barcoded Matrix tube containing 10ug of transfection-ready, dried plasmid DNA (reconstitute with 100 ul of water).

Reconstitution Method:

1. Centrifuge at 5,000xg for 5min.
2. Carefully open the tube and add 100ul of sterile water to dissolve the DNA.
3. Close the tube and incubate for 10 minutes at room temperature.
4. Briefly vortex the tube and then do a quick spin (less than 5000xg) to concentrate the liquid at the bottom.
5. Store the suspended plasmid at -20°C. The DNA is stable for at least one year from date of shipping when stored at -20°C.

RefSeq: [NM\\_001207.4](#), [NP\\_001198.2](#)

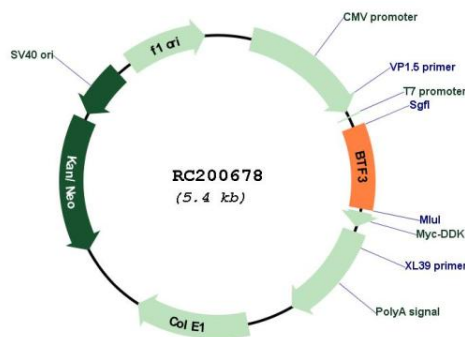
RefSeq Size: 1021 bp

RefSeq ORF: 489 bp

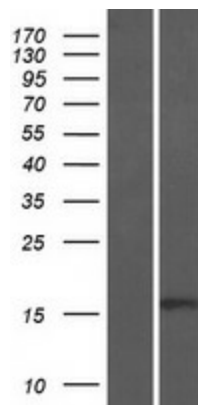
Locus ID: 689

**UniProt ID:** [P20290](#)  
**Cytogenetics:** 5q13.2  
**Domains:** NAC  
**Protein Families:** Transcription Factors  
**MW:** 17.5 kDa  
**Gene Summary:** This gene encodes the basic transcription factor 3. This protein forms a stable complex with RNA polymerase IIB and is required for transcriptional initiation. Alternative splicing results in multiple transcript variants encoding different isoforms. This gene has multiple pseudogenes. [provided by RefSeq, Jul 2008]

### Product images:



Circular map for RC200678



Western blot validation of overexpression lysate (Cat# [LY420067]) using anti-DDK antibody (Cat# [TA50011-100]). Left: Cell lysates from untransfected HEK293T cells; Right: Cell lysates from HEK293T cells transfected with RC200678 using transfection reagent MegaTran 2.0 (Cat# [TT210002]).