

## Product datasheet for **RC200673**

### **PFKP (NM\_002627) Human Tagged ORF Clone**

#### **Product data:**

Product Type:	Expression Plasmids
Product Name:	PFKP (NM_002627) Human Tagged ORF Clone
Tag:	Myc-DDK
Symbol:	PFKP
Synonyms:	ATP-PFK; PFK-C; PFK-P; PFKF
Mammalian Cell Selection:	Neomycin
Vector:	pCMV6-Entry (PS100001)
E. coli Selection:	Kanamycin (25 ug/mL)



[View online »](#)

ORF Nucleotide  
Sequence:

>RC200673 ORF sequence  
Red=Cloning site Blue=ORF Green=Tags(s)

TTTTGTAATACGACTCACTATAGGGCGGCCGGGAATTCGTCGACTGGATCCGGTACCGAGGAGATCTGCC  
GCC**CGGATCGCC**

ATGGACGCGGACGACTCCCGGGCCCCAAGGGCTCCTTGCAGGAAATTCCTGGAGCACCTCTCCGGGGCCG  
GCAAGGCCATCGCGTGTCTGACCAGCGGGGGATGCTCAAGGTATGAACGCTGCCGTCCGTGCCGTGGT  
GCGCATGGGTATCTACGTGGGGGCCAAGGTGTACTTCATCTACGAGGGCTACCAGGGCATGGTGGACGGA  
GGCTCAAACATCGCAGAGGCCGACTGGGAGAGTGTCTCCAGCATCCTGCAAGTGGGCGGGACGATCATTG  
GCAGTGCAGCGTCCAGGCCCTCCGCACCGGGAAAGCCGCTGAAGGCTGCTTGCAACCTGCTGCAGCG  
CGGCATCACCAACCTGTGTGTGATCGCGGGGACGGGAGCCTCACCGGGCCAACTCTCCGGAAGGAG  
TGGAGTGGGCTGTGGAGGAGCTGGCCAGGAACGGCCAGATCGATAAGGAGGCCGTGCAGAAGTACGCCCT  
ACCTCAACGTGGTGGCATGGTGGGCTCCATCGACAATGATTTCTGCGGCACCGACATGACCATCGGCAC  
GGACTCCGCCCTGCACAGGATCATCGAGTTCGTCGACGCCATCATGACCAGGCCAGAGCCACCAGAGG  
ACCTTCGTTCTGGAGGTGATGGGACGACTGTGGGTACCTGGCCCTGGTGGTGCCTTGGCCTGCGGTG  
CGGACTGGGTGTTCCCTCCAGAATCTCCACCAGAGGAAGGCTGGGAGGAGCAGATGTGTGTCAAACCTCTC  
GGAGAACCGTGCCCGAAAAAAGGCTGAATATTATTATTGTGGCTGAAGGAGCAATTGATACCCAAAAT  
AAACCCATCACCTCTGAGAAAAACAAGAGCTTGTGTCACGCAGCTGGGCTATGACACACGTGTGACCA  
TCCTCGGGCAGTGCAGAGAGGAGGGACCCCTTCGGCATTGACAGGATCTTGCCAGCCGATGGGAGT  
GGAGGCAGTATCGCCTTGCTAGAGGCCACCCGGACACCCAGCTTGCCTGCTGACTGAACGGGAAC  
CACGCCGTGCCCTGCCCTGATGGAGTGCCTGCAGATGACTCAGGATGTGCAGAAGGCGATGGACGAGA  
GGAGATTTCAAGATGCGGTTGACTCCGAGGGAGGAGCTTTCGGGGCAACCTGAACACCTACAAGCGGCA  
TGCCATCAAGCTGCCGGATGATCAGATCCCAAAGACCAATTGCAACGTAGCTGTATCAACGTGGGGGCA  
CCCGCGGCTGGGATGAACGCGGCCGTACGCTCAGCTGTGCGCGTGGGATTGCCGACGGCCACAGGATGC  
TCGCCATCTATGATGGCTTTGACGGCTTCGCCAAGGGCCAGATCAAGAAAATCGGCTGGACAGATGTCGG  
GGGCTGGACCGCCAAAGGAGGCTCCATTCTGGGACAAAACGCTTCTCCCGGGGAAGTACTTGGAAGAG  
ATCGCCACACAGATGCGCACGCACAGCATCAACGCGCTGCTGATCATCGGTGGATTTCGAGGCCTACCTGG  
GACTCCTGGAGCTGTGAGCCGCCGGGAGACGACGAGGAGTTCTGTGTCCCATGGTATGGTTCCCGC  
TACTGTGTCCAACAATGTGCCGGTTCCGATTTACGATCGGGGACAGACCCGCCCTGAACACTATCACC  
GACACCTGCGACCGCATCAAGCAGTCCGCCAGCGGAACCAAGCGCGCGTGTTCATCATCGAGACCATGG  
GCGGCTACTGTGCTACCTGGCCAAATGGGGGGCTCGCGGCCGGAGCTGATGCCGCATACATTTTCGA  
AGAGCCCTTCGACATCAGGGATCTGCAGTCCAACGTGGAGCACCTGACGGAGAAAATGAAGACCACCATC  
CAGAGAGGCCCTTGCTCAGAAATGAGAGCTGCAGTGAAGAACTACACCACCGACTTCATTTACCAGCTGT  
ATTCAGAAGAGGGCAAAGGCGTGTGACTGCAGGAAGAAGTGGTGCATGCAGCAGGGTGGGGC  
ACCCTCTCATTGATAGAACTTTGGAACAAAATCTCTGCCAGAGCTATGGAGTGGATCACTGCAAAA  
CTCAAGGAGGCCCGGGCAGAGGAAAAAATTTACCACCGATGATTCCATTTGTGTGCTGGGAATAAGCA  
AAAGAAACGTTATTTTTCAACCTGTGGCAGAGCTGAAGAAGCAAACGGATTTTGGACACAGGATTTCCAA  
AGAACAGTGGTGGCTCAAGCTACGGCCCTCATGAAAATCTGGCCAAGTACAAGGCCAGCTATGACGTG  
TCGGACTCAGGCCAGCTGGAACATGTGCAGCCCTGGAGTGTG

**AGCGGACCG**ACGCGTACGCGGCCGCTCGAGCAGAACTCATCTCAGAAGAGGATCTGGCAGCAAATGATATCC  
TGGATTACAAGGATGACGACGATAAGGTTTAA

**Protein Sequence:** >RC200673 protein sequence  
Red=Cloning site Green=Tags(s)

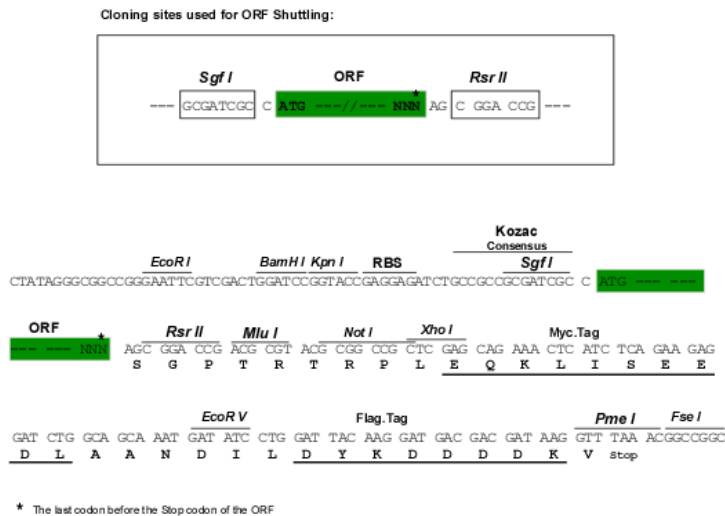
MDADDSRAPKGSRLRFLEHL SGAGKAIGVLTSGGDAQGMNAAVRAVVRMGIYVGAKVYFYIEGYQGMVDG  
GSNIAEADWESVSSILQVGGTIIGSARCQAFRTREGRLKAACNLLQRGITNLCVIGGDGSLTGANLFRKE  
WSGLLEELARNGQIDKEAVQKYAYLNVVGMVGSIDNDFCGTDMTIGTDSALHRIIEVVDAIMTTAQSHQR  
TFVLEVMGRHCGYLALVSALACGADWVFLPESPPEEGWEEQMCVKLSENARAKKRLNIIIVAEGAIDTQN  
KPITSEKIKELVVTQLGYDTRVTILGHVQRGGTPSAFDRILASRMGVEAVIALLEATPDTACVVS LN GN  
HAVRLPLMECVMTQDVQKAMDERRFQDAVRLRGRSFAGNLNTYKRLAIKLPDDQIPKTNCNVAVIN V GA  
PAAGMNAAVRS AVRVGIADGHRMLAIYDGFDFAGQIQEIGWTDVGGWTGQGSILGTKRVLPGKYLEE  
IATQMRTHSINALLIIGGFEAYLGLEL SAAREKHEEFCVPMVMVPATVSNNVPGSDFSIGADTALNTIT  
DTCRIKQSASGTRRVFIIETMGGYCYLANMGLAAGADAAYIFEFPDIRDLQSNVEHLTEKMKTTI  
QRGLVLRNESCSENYTTDFIYQLYSEEGKGVFDCRKNVLGHMQGGAPSPFDRNFGTKISARAMEWITAK  
LKEARGRGGKFTTDDSI CVLGISKRN VIFQPVAELKKQTD FEHRIPKEQWLLKLRPLMKILAKYKASYDV  
SDSGQLEHVQPWSV

SGP TRTRPLEQKLI SEEDLAANDILDYKDDDDKV

**Chromatograms:** [https://cdn.origene.com/chromatograms/mk6184\\_c04.zip](https://cdn.origene.com/chromatograms/mk6184_c04.zip)

**Restriction Sites:** Sgfl-RsrII

Cloning Scheme:



ACCN: NM\_002627

ORF Size: 2352 bp

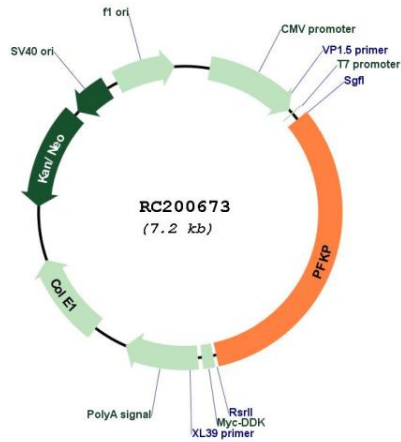
OTI Disclaimer: The molecular sequence of this clone aligns with the gene accession number as a point of reference only. However, individual transcript sequences of the same gene can differ through naturally occurring variations (e.g. polymorphisms), each with its own valid existence. This clone is substantially in agreement with the reference, but a complete review of all prevailing variants is recommended prior to use. [More info](#)

OTI Annotation: This clone was engineered to express the complete ORF with an expression tag. Expression varies depending on the nature of the gene.

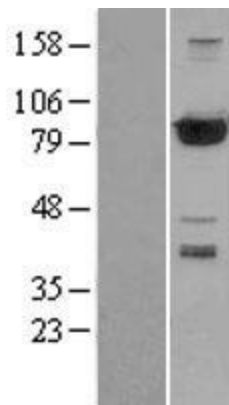
Components: The ORF clone is ion-exchange column purified and shipped in a 2D barcoded Matrix tube containing 10ug of transfection-ready, dried plasmid DNA (reconstitute with 100 ul of water).

<b>Reconstitution Method:</b>	<ol style="list-style-type: none"><li>1. Centrifuge at 5,000xg for 5min.</li><li>2. Carefully open the tube and add 100ul of sterile water to dissolve the DNA.</li><li>3. Close the tube and incubate for 10 minutes at room temperature.</li><li>4. Briefly vortex the tube and then do a quick spin (less than 5000xg) to concentrate the liquid at the bottom.</li><li>5. Store the suspended plasmid at -20°C. The DNA is stable for at least one year from date of shipping when stored at -20°C.</li></ol>
<b>Note:</b>	Plasmids are not sterile. For experiments where strict sterility is required, filtration with 0.22um filter is required.
<b>RefSeq:</b>	<a href="#">NM_002627.1</a>
<b>RefSeq Size:</b>	2657 bp
<b>RefSeq ORF:</b>	2355 bp
<b>Locus ID:</b>	5214
<b>UniProt ID:</b>	<a href="#">Q01813</a>
<b>Cytogenetics:</b>	10p15.2
<b>Domains:</b>	PFK
<b>Protein Families:</b>	Druggable Genome
<b>Protein Pathways:</b>	Fructose and mannose metabolism, Galactose metabolism, Glycolysis / Gluconeogenesis, Metabolic pathways, Pentose phosphate pathway
<b>MW:</b>	85.6 kDa
<b>Gene Summary:</b>	This gene encodes a member of the phosphofructokinase A protein family. The encoded enzyme is the platelet-specific isoform of phosphofructokinase and plays a key role in glycolysis regulation. This gene may play a role in metabolic reprogramming in some cancers, including clear cell renal cell carcinomas, and cancer of the bladder, breast, and lung. Alternative splicing results in multiple transcript variants. [provided by RefSeq, Sep 2016]

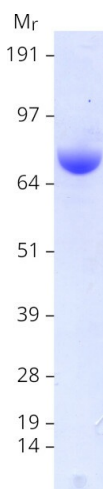
Product images:



Circular map for RC200673



Western blot validation of overexpression lysate (Cat# [LY400932]) using anti-DDK antibody (Cat# [TA50011-100]). Left: Cell lysates from untransfected HEK293T cells; Right: Cell lysates from HEK293T cells transfected with RC200673 using transfection reagent MegaTran 2.0 (Cat# [TT210002]).



Coomassie blue staining of purified PFKP protein (Cat# [TP300673]). The protein was produced from HEK293T cells transfected with PFKP cDNA clone (Cat# RC200673) using MegaTran 2.0 (Cat# [TT210002]).