

Product datasheet for RC200671

PPP2R4 (PTPA) (NM_178000) Human Tagged ORF Clone

Product data:

Product Type:	Expression Plasmids
Product Name:	PPP2R4 (PTPA) (NM_178000) Human Tagged ORF Clone
Tag:	Myc-DDK
Symbol:	PPP2R4
Synonyms:	PP2A; PPP2R4; PR53
Mammalian Cell Selection:	Neomycin
Vector:	pCMV6-Entry (PS100001)
E. coli Selection:	Kanamycin (25 ug/mL)
ORF Nucleotide Sequence:	>RC200671 ORF sequence Red=Cloning site Blue=ORF Green=Tags(s)

TTTTGTAATACGACTCACTATAGGGCGGCCGGAATTCGTCGACTGGATCCGGTACCGAGGAGATCTGCC
GCC**CGATCGCC**

ATGGCTGAGGGCGAGCGGCAGCCGCCAGATTCTTCAGAGGAGGCCCTCCAGCCACTCAGAACTTCA
TCATTCAAAAAGGAGATCCACACAGTCCAGACATGGGCAAATGGAAGCGTTCTCAGGCATACGCTGA
CTACATCGGATTCATCCTTACCCTCAACGAAGGTGTGAAGGGGAAGAAGCTGACCTTCGAGTACAGATC
TCCGAGGCCATTGAGAACTAGTCGCTTCTCAACACGCTGGACAGGTGGATTGATGAGACTCCTCCAG
TGGACCAGCCCTCTCGGTTTGGGAATAAGGCATACAGGACCTGGTATGCCAAACTTGATGAGGAAGCAGA
AACTTGGTGGCCACAGTGGTCCCTACCCATCTGGCAGCTGCTGTGCCTGAGGTGGCTGTTACCTAAAG
GAGTCAGTGGGGAATCCACGCGCATTGACTACGGCACAGGCATGAGGCAGCCTTCGCTGCTTCTCTCT
GCTGTCTCTGCAAGATTGGGGTCTCCGGTGGATGACCAAATAGCTATTGTCTTCAAGGTGTTCAATCG
GTACCTTGAGGTTATGCGGAAACTCCAGAAAACATACAGGATGGAGCCAGCCGCGCAGCCAGGGAGTGTGG
GGTCTGGATGACTTCCAGTTTCTGCCCTTCTGCGGCGAGTTCGCAGCTGATAGACCACCCATACCTGG
AGCCCAGACACTTGTGGATGAGAAGCCGTGAATGAGAACCACAAGGACTACATGTTCTGGAGTGTAT
CCTGTTTATTACCGAGATGAAGACTGGCCATTTGCAGAGCACTCAACCAGCTGTGGAACATCAGCGCC
GTCCCTTCTGGTCCAAAGTGAACCAGGGTCTCATCCGATGTATAAGGCCGAGTGCCTGGAGAAGTTCC
CTGTGATCCAGCACTTCAAGTTCGGGAGCCTGCTGCCATCCATCCTGTACAGTCGGGC

ACGCGTACGCGGCCGCTCGAGCAGAAACTCATCTCAGAAGAGGATCTGGCAGCAAATGATATCCTGGATT
ACAAGGATGACGACGATAAGGTTTAA



[View online »](#)

Protein Sequence: >RC200671 protein sequence
Red=Cloning site Green=Tags(s)

MAEGERQPPPDSSEEAPPATQNFIIIPKKEIHTVPDMGKWKRSQAYADYIGFILTLNEGKGGKLTFEYRV
 SEATIEKLVALLNTLDRWIDETPPVDQPSRFGNKAYRTWYAKLDEEAENLVATVVPHTLAAAVPEVAVYLK
 ESVGNSTRIDYGTGHEAAFAAFLCCLCKIGVLRVDDQIAIVFKVFNRYLEVMRKLQKTYRMEPAGSQGVW
 GLDDFQFLPFIWSSQLIDHPYLEPRHFVDEKAVNENHKDYMFLECILFITEMKTGPF AEHSNQLWNISA
 VPSWSKVNQGLIRMYKAECKLEKFPVIQHFKFGSLLPIHPVTSG

TRTRPLEQKLISEEDLAANDILDYKDDDDKV

Chromatograms: https://cdn.origene.com/chromatograms/mk6386_c05.zip

Restriction Sites: SgfI-MluI

Cloning Scheme:



ACCN: NM_178000

ORF Size: 969 bp

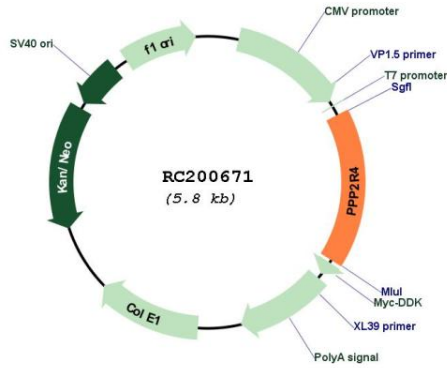
OTI Disclaimer: The molecular sequence of this clone aligns with the gene accession number as a point of reference only. However, individual transcript sequences of the same gene can differ through naturally occurring variations (e.g. polymorphisms), each with its own valid existence. This clone is substantially in agreement with the reference, but a complete review of all prevailing variants is recommended prior to use. [More info](#)

OTI Annotation: This clone was engineered to express the complete ORF with an expression tag. Expression varies depending on the nature of the gene.

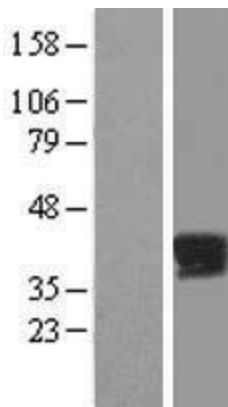
Components: The ORF clone is ion-exchange column purified and shipped in a 2D barcoded Matrix tube containing 10ug of transfection-ready, dried plasmid DNA (reconstitute with 100 ul of water).

Reconstitution Method:	<ol style="list-style-type: none">1. Centrifuge at 5,000xg for 5min.2. Carefully open the tube and add 100ul of sterile water to dissolve the DNA.3. Close the tube and incubate for 10 minutes at room temperature.4. Briefly vortex the tube and then do a quick spin (less than 5000xg) to concentrate the liquid at the bottom.5. Store the suspended plasmid at -20°C. The DNA is stable for at least one year from date of shipping when stored at -20°C.
RefSeq:	NM_178000.3
RefSeq Size:	2764 bp
RefSeq ORF:	972 bp
Locus ID:	5524
UniProt ID:	Q15257
Cytogenetics:	9q34.11
Protein Families:	Druggable Genome, Phosphatase
MW:	36.8 kDa
Gene Summary:	<p>Protein phosphatase 2A is one of the four major Ser/Thr phosphatases and is implicated in the negative control of cell growth and division. Protein phosphatase 2A holoenzymes are heterotrimeric proteins composed of a structural subunit A, a catalytic subunit C, and a regulatory subunit B. The regulatory subunit is encoded by a diverse set of genes that have been grouped into the B/PR55, B'/PR61, and B''/PR72 families. These different regulatory subunits confer distinct enzymatic specificities and intracellular localizations to the holoenzyme. The product of this gene belongs to the B' family. This gene encodes a specific phosphotyrosyl phosphatase activator of the dimeric form of protein phosphatase 2A. Alternative splicing results in multiple transcript variants encoding different isoforms. [provided by RefSeq, Jul 2008]</p>

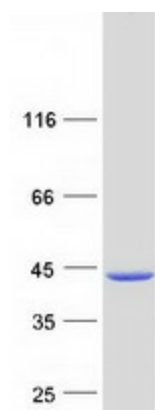
Product images:



Circular map for RC200671



Western blot validation of overexpression lysate (Cat# [LY412071]) using anti-DDK antibody (Cat# [TA50011-100]). Left: Cell lysates from untransfected HEK293T cells; Right: Cell lysates from HEK293T cells transfected with [RC212144] using transfection reagent MegaTran 2.0 (Cat# [TT210002]).



Coomassie blue staining of purified PTPA protein (Cat# [TP300671]). The protein was produced from HEK293T cells transfected with PTPA cDNA clone (Cat# RC200671) using MegaTran 2.0 (Cat# [TT210002]).