

Product datasheet for RC200667

FKBP1B (NM_054033) Human Tagged ORF Clone

Product data:

Product Type: Expression Plasmids
Product Name: FKBP1B (NM_054033) Human Tagged ORF Clone
Tag: Myc-DDK
Symbol: FKBP1B
Synonyms: FKBP1L; FKBP12.6; OTK4; PKBP1L; PPIase
Mammalian Cell Selection: Neomycin
Vector: pCMV6-Entry (PS100001)
E. coli Selection: Kanamycin (25 ug/mL)
ORF Nucleotide Sequence: >RC200667 ORF sequence
 Red=Cloning site Blue=ORF Green=Tags(s)

TTTTGTAATACGACTCACTATAGGGCGGCCGGAATTCGTCGACTGGATCCGGTACCGAGGAGATCTGCC
 GCCCGCATCGCC

ATGGGCGTGGAGATCGAGACCATCTCCCCGGAGACGGAAGGACATCCCCAAGAAGGGCCAAACGTGTG
 TGGTGCCTACACAGGAATGCTCCAAAATGGGAAGAAGTTTGATTCATCCAGAGACAGAAACAACTTT
 CAAGTTCAGAATTGGCAAACAGGAAGTCATCAAAGTTTTGAAGAGGGTGCAGCCAGCTGGGTCTCTT
 TCTCTCTCCCATCTGCCCATCCCTGC

ACGCGTACGCGGCCGCTCGAGCAGAACTCATCTCAGAAGAGGATCTGGCAGCAAATGATATCCTGGATT
 ACAAGGATGACGACGATAAGGTTTAA

Protein Sequence: >RC200667 protein sequence
 Red=Cloning site Green=Tags(s)
 MGVEIETISPGDGRTPFKKQTCVVHYTGMLQNGKKFDSSRDNRNPKFRIGKQEVIKGFEEGAAQLGPL
 SPLPICPHPC

TRTRPLEQKLISEEDLAANDILDYKDDDDKV

Chromatograms: https://cdn.origene.com/chromatograms/mk6386_f12.zip

Restriction Sites: Sgfl-MluI



[View online »](#)

Cloning Scheme:


ACCN: NM_054033

ORF Size: 240 bp

OTI Disclaimer: The molecular sequence of this clone aligns with the gene accession number as a point of reference only. However, individual transcript sequences of the same gene can differ through naturally occurring variations (e.g. polymorphisms), each with its own valid existence. This clone is substantially in agreement with the reference, but a complete review of all prevailing variants is recommended prior to use. [More info](#)

OTI Annotation: This clone was engineered to express the complete ORF with an expression tag. Expression varies depending on the nature of the gene.

Components: The ORF clone is ion-exchange column purified and shipped in a 2D barcoded Matrix tube containing 10ug of transfection-ready, dried plasmid DNA (reconstitute with 100 ul of water).

- Reconstitution Method:**
1. Centrifuge at 5,000xg for 5min.
 2. Carefully open the tube and add 100ul of sterile water to dissolve the DNA.
 3. Close the tube and incubate for 10 minutes at room temperature.
 4. Briefly vortex the tube and then do a quick spin (less than 5000xg) to concentrate the liquid at the bottom.
 5. Store the suspended plasmid at -20°C. The DNA is stable for at least one year from date of shipping when stored at -20°C.

RefSeq: [NM_054033.4](#)

RefSeq Size: 1016 bp

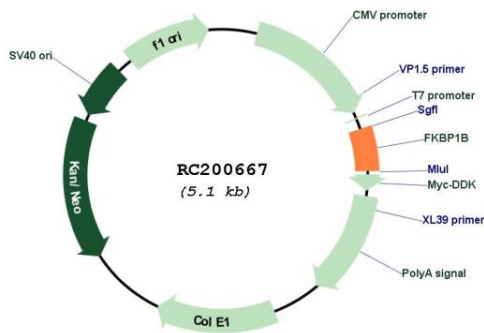
RefSeq ORF: 243 bp

Locus ID: 2281

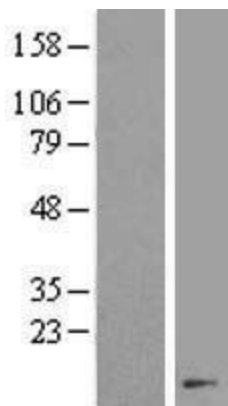
UniProt ID: [P68106](#)
Cytogenetics: 2p23.3
Domains: FKBP
Protein Families: Druggable Genome
MW: 8.8 kDa

Gene Summary: The protein encoded by this gene is a member of the immunophilin protein family, which play a role in immunoregulation and basic cellular processes involving protein folding and trafficking. This encoded protein is a cis-trans prolyl isomerase that binds the immunosuppressants FK506 and rapamycin. It is highly similar to the FK506-binding protein 1A. Its physiological role is thought to be in excitation-contraction coupling in cardiac muscle. There are two alternatively spliced transcript variants of this gene encoding different isoforms. [provided by RefSeq, Jul 2008]

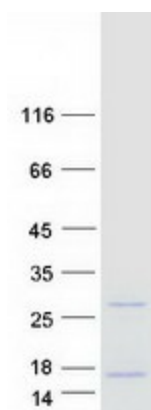
Product images:



Circular map for RC200667



Western blot validation of overexpression lysate (Cat# [LY409277]) using anti-DDK antibody (Cat# [TA50011-100]). Left: Cell lysates from untransfected HEK293T cells; Right: Cell lysates from HEK293T cells transfected with RC200667 using transfection reagent MegaTran 2.0 (Cat# [TT210002]).



Coomassie blue staining of purified FKBP1B protein (Cat# [TP300667]). The protein was produced from HEK293T cells transfected with FKBP1B cDNA clone (Cat# RC200667) using MegaTran 2.0 (Cat# [TT210002]).