

## Product datasheet for RC200657

### Citrate transport protein (SLC25A1) (NM\_005984) Human Tagged ORF Clone

#### Product data:

|                           |   |
|---------------------------|---|
| Product Type:             | Expression Plasmids   |
| Product Name:             | Citrate transport protein (SLC25A1) (NM_005984) Human Tagged ORF Clone      |
| Tag:                      | Myc-DDK   |
| Symbol:                   | Citrate transport protein   |
| Synonyms:                 | CMS23; CTP; D2L2AD; SEA; SLC20A3  |
| Mammalian Cell Selection: | Neomycin  |
| Vector:                   | pCMV6-Entry (PS100001)  |
| E. coli Selection:        | Kanamycin (25 ug/mL)  |
| ORF Nucleotide Sequence:  | >RC200657 representing NM_005984<br>Red=Cloning site Blue=ORF Green=Tags(s) |

CTATAGGGCGGCCGGAATTCGTCGACTGGATCCGGTACCGAGGAGATCTGCC  
GCC**CGATCGCC**

ATGCCCGCGCCCCGCGCCCCGCGCTCTGGCGGCCGCCGCGCCCGCTCCGGGAAGGCCAAGCTGACGC  
ACCCGGGAAGGCGATCCTGGCAGGCGGCCTGGCGGGTGGCATCGAGATCTGCATCACCTTCCCCACCGA  
GTACGTGAAGACGCAGCTGCAGCTGGACGAGCGCTCGACCCGCCGGTACCGGGGCATCGGGGACTGC  
GTGCGGCAGACGGTTCGACGCCATGGCGTCTGGGCTGTACCGCGCCCTAGCTCCCTGCTCTACGGTT  
CCATCCCCAAGGCGCCGTCAGGTTTGAATGTTTCGAGTTCCTCAGCAACCACATGCGGGATGCCAGGG  
ACGGCTGGACAGCACGCTGGGCTGCTGTGCGGCTGGGCGCTGGCGTGGCCGAGGCCGTGGTGGTCTGT  
TGCCCCATGGAGACCATCAAGGTGAAGTTCATCCACGACCAGACCTCCCCAAACCCCAAGTACAGAGGAT  
TCTTCCACGGGGTTAGGGAGATTGTGCGGGAACAAGGGCTGAAGGGGACGTACCAGGGCCTCACAGCCAC  
TGTCTGAAGCAGGGCTCGAACCAGGCCATCCGCTTCTTCGTCATGACCTCCCTGCGCAACTGGTACCGA  
GGGACAACCCCAACAAGCCATGAACCTCTGATCACTGGGGTCTTCGGAGCTATTGCAGGCGCAGCCA  
GTGTCTTTGGAACACTCCTCTGGATGTGATTAAGACCCGGATGCAGGGCCTGGAGGCGCACAAATACCG  
GAACACGTGGGACTGCGGCTTGCAGATCCTGAAGAAGGAGGGGCTCAAGGCATTCTACAAGGCACTGTC  
CCCCGCTGGGCGGGTCTGCCTGGATGTGCCATAGTGTTCATCTATGATGAAGTGGTGAAGCTGC  
TCAACAAAGTGTGAAGACGGAC

**CTCGAGCAGAACTCATCTCTGAAGAGGATCTGGCAGCAAATGATATCCTGGATTACAAGGATGACGACG**  
**ATAAGGTTTAA**



[View online »](#)



**Reconstitution Method:**

1. Centrifuge at 5,000xg for 5min.
2. Carefully open the tube and add 100ul of sterile water to dissolve the DNA.
3. Close the tube and incubate for 10 minutes at room temperature.
4. Briefly vortex the tube and then do a quick spin (less than 5000xg) to concentrate the liquid at the bottom.
5. Store the suspended plasmid at -20°C. The DNA is stable for at least one year from date of shipping when stored at -20°C.

**Note:** Plasmids are not sterile. For experiments where strict sterility is required, filtration with 0.22um filter is required.

**RefSeq:** [NM\\_005984.5](#)

**RefSeq Size:** 1619 bp

**RefSeq ORF:** 936 bp

**Locus ID:** 6576

**UniProt ID:** [P53007](#)

**Cytogenetics:** 22q11.21

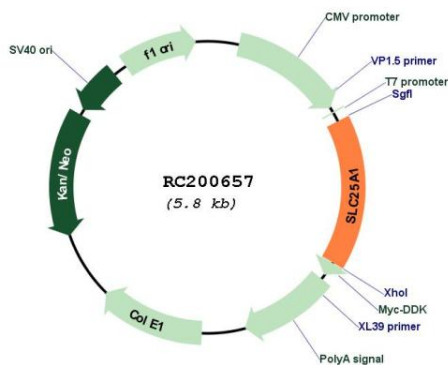
**Domains:** mito\_carr

**Protein Families:** Druggable Genome

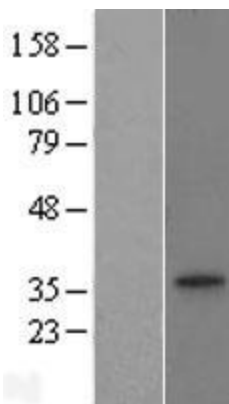
**MW:** 34.01 kDa

**Gene Summary:** This gene encodes a member of the mitochondrial carrier subfamily of solute carrier proteins. Members of this family include nuclear-encoded transporters that translocate small metabolites across the mitochondrial membrane. This protein regulates the movement of citrate across the inner membranes of the mitochondria. Mutations in this gene have been associated with combined D-2- and L-2-hydroxyglutaric aciduria. Pseudogenes of this gene have been identified on chromosomes 7, 11, 16, and 19. Alternative splicing results in multiple transcript variants. [provided by RefSeq, Dec 2013]

Product images:



Circular map for RC200657



Western blot validation of overexpression lysate (Cat# [LY416934]) using anti-DDK antibody (Cat# [TA50011-100]). Left: Cell lysates from untransfected HEK293T cells; Right: Cell lysates from HEK293T cells transfected with RC200657 using transfection reagent MegaTran 2.0 (Cat# [TT210002]).