

Product datasheet for **RC200654**

IL11RA (NM_004512) Human Tagged ORF Clone

Product data:

Product Type:	Expression Plasmids
Product Name:	IL11RA (NM_004512) Human Tagged ORF Clone
Tag:	Myc-DDK
Symbol:	IL11RA
Synonyms:	CRSDA
Mammalian Cell Selection:	Neomycin
Vector:	pCMV6-Entry (PS100001)
E. coli Selection:	Kanamycin (25 ug/mL)



[View online »](#)

ORF Nucleotide Sequence:

>RC200654 ORF sequence
 Red=Cloning site Blue=ORF Green=Tags(s)

TTTTGTAATACGACTCACTATAGGGCGGCCGGAATTCGTCGACTGGATCCGGTACCGAGGAGATCTGCC
 GCC**CGGATCGCC**

ATGAGCAGCAGCTGCTCAGGGCTGAGCAGGGTCTGGTGGCCGTGGCTACAGCCCTGGTGTCTGCCTCCT
 CCCCTGCCCCAGGCCTGGGGCCCCAGGGTCCAGTATGGCAGCCAGGCAGGTCCGTGAAGCTGTG
 TTGTCCTGGAGTGACTGCCGGGACCCAGTGTCTGGTTTCGGGATGGGAGCCAAAGCTGCTCCAGGGA
 CCTGACTCTGGGTAGGGCATGAACTGGTCTGGCCAGGCAGACAGCACTGATGAGGGCACCTACATCT
 GCCAGACCCTGGATGGTGCACCTGGGGGCACAGTACCCTGCAGCTGGGCTACCTCCAGCCGCCCTGT
 TGTCTCTGCCAAGCAGCCGACTATGAGAACTTCTTTGCACTTGGAGTCCAGCCAGATCAGCGGTTTA
 CCCACCCGCTACCTCACCTCTACAGGAAGAAGACAGTCTAGGAGCTGATAGCCAGAGGAGGATCCAT
 CCACAGGGCCCTGGCCATGCCACAGGATCCCCTAGGGGCTGCCGCTGTGTTGCCACGGGGCTGAGTT
 CTGGAGCCAGTACCGATTAATGTGACTGAGGTGAACCCACTGGGTGCCAGCACACGCTGCTGGATGTG
 AGCTTGCAGAGCATCTTGCGCCCTGACCCACCCAGGGCTGCGGGTAGAGTCACTACCAGGTTACCC
 GACGCTGCGAGCCAGCTGGACATACCCTGCCTCTGGCCGTGCCAGCCCACTTCTGTCAAGTTCGG
 TTTGCAGTACCGTCCGGCGCAGCATCCAGCCTGGTCCACGGTGGAGCCAGCTGGACTGGAGGAGGTGATC
 ACAGATGCTGTGGCTGGGCTGCCCATGCTGTACGAGTCACTGCCCAGGACTTTCTAGATGCTGGCACCT
 GGAGCACCTGGAGCCCGAGGCCTGGGAACTCCGAGCACTGGGACCATAACAAAGGAGATACCAGCATG
 GGGCCAGCTACACACGCAGCCAGAGGTGGAGCCTCAGGTGGACAGCCCTGCTCTCAAGGCCCTCCCTC
 CAACCACACCCTCGGCTACTTGATCACAGGACTCTGTGGAGCAGGTAGCTGTGCTGGCGCTTTTGGAA
 TCCTTTCTTTCTGGACTGGTGGCTGGGGCCCTGGCACTGGGGCTCTGGCTGAGGCTGAGACGGGGTGG
 GAAGGATGGATCCCCAAGCCTGGGTTCTTGGCCTCAGTGATTCCAGTGGACAGGCGTCCAGGAGCTCCA
 AACCTG

ACGCGTACGCGGCCGCTCGAGCAGAACTCATCTCAGAAGAGGATCTGGCAGCAATGATATCCTGGATT
 ACAAGGATGACGACGATAAGGTTTAA

Protein Sequence:

>RC200654 protein sequence
 Red=Cloning site Green=Tags(s)

MSSSCGLSRVLVAVATALVSASSPCPQAWGPPGVQYQGPGRSVKLCPCGVTAGDPVSWFRDGEPEKLLQG
 PDSGLGHEL VLAQADSTDEGTICQTLDGALGGTVTLQLGYPPARPVVSCQAADYENF SCTWSPSQISGL
 PTRYLTSYRKKTVLGADSRSPSTGPWPCPDPLGAARCVVHGAEFWSQYRINVTEVNPLGASTRLLDV
 SLQSI LRDPDPQLRVESVPGYPRRLRASWTYPASWPCPHFLKFRLLQYRPAQHPAWSTVEPAGLEEVI
 TDAVAGLPHAVRVSARDFLDAGTWSTWSPEAWGTPSTGTIPKEIPAWQLHTQPEVEPQVDS PAPP RPSL
 QPHPRLLDHRDSVEQVAVLASLGILSFLGLVAGALALGLWLRRLRRGGKDGSPKPGFLASVIPVDRRPGAP
 NL

TRTRPLEQKLISEEDLAANDILDYKDDDDKV

Chromatograms:

https://cdn.origene.com/chromatograms/mk6583_h09.zip

Restriction Sites:

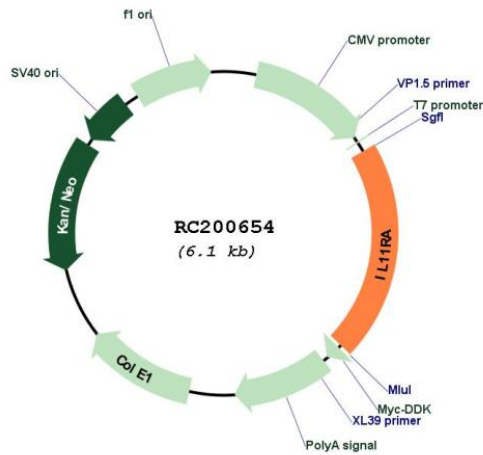
Sgfl-Mlul

Cloning Scheme:

Cloning sites used for ORF Shuttling:



* The last codon before the Stop codon of the ORF

Plasmid Map:


ACCN: NM_004512

ORF Size: 1266 bp

OTI Disclaimer: The molecular sequence of this clone aligns with the gene accession number as a point of reference only. However, individual transcript sequences of the same gene can differ through naturally occurring variations (e.g. polymorphisms), each with its own valid existence. This clone is substantially in agreement with the reference, but a complete review of all prevailing variants is recommended prior to use. [More info](#)

OTI Annotation: This clone was engineered to express the complete ORF with an expression tag. Expression varies depending on the nature of the gene.

Components: The ORF clone is ion-exchange column purified and shipped in a 2D barcoded Matrix tube containing 10ug of transfection-ready, dried plasmid DNA (reconstitute with 100 ul of water).

Reconstitution Method:

1. Centrifuge at 5,000xg for 5min.
2. Carefully open the tube and add 100ul of sterile water to dissolve the DNA.
3. Close the tube and incubate for 10 minutes at room temperature.
4. Briefly vortex the tube and then do a quick spin (less than 5000xg) to concentrate the liquid at the bottom.
5. Store the suspended plasmid at -20°C. The DNA is stable for at least one year from date of shipping when stored at -20°C.

RefSeq: [NM_004512.3](#), [NP_004503.1](#)

RefSeq Size: 1776 bp

RefSeq ORF: 1268 bp

Locus ID: 3590

Cytogenetics: 9p13.3

Domains: ig, IG, FN3

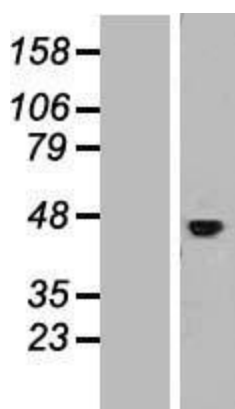
Protein Families: Druggable Genome, Transmembrane

Protein Pathways: Cytokine-cytokine receptor interaction, Hematopoietic cell lineage, Jak-STAT signaling pathway

MW: 45.2 kDa

Gene Summary: Interleukin 11 is a stromal cell-derived cytokine that belongs to a family of pleiotropic and redundant cytokines that use the gp130 transducing subunit in their high affinity receptors. This gene encodes the IL-11 receptor, which is a member of the hematopoietic cytokine receptor family. This particular receptor is very similar to ciliary neurotrophic factor, since both contain an extracellular region with a 2-domain structure composed of an immunoglobulin-like domain and a cytokine receptor-like domain. Multiple alternatively spliced transcript variants have been found for this gene. [provided by RefSeq, Jun 2012]

Product images:



Western blot validation of overexpression lysate (Cat# [LY428277]) using anti-DDK antibody (Cat# [TA50011-100]). Left: Cell lysates from untransfected HEK293T cells; Right: Cell lysates from HEK293T cells transfected with [RC226571] using transfection reagent MegaTran 2.0 (Cat# [TT210002]).