

Product datasheet for **RC200647**

PPP2R5D (NM_180976) Human Tagged ORF Clone

Product data:

Product Type:	Expression Plasmids
Product Name:	PPP2R5D (NM_180976) Human Tagged ORF Clone
Tag:	Myc-DDK
Symbol:	PPP2R5D
Synonyms:	B56D; B56delta; MRD35
Mammalian Cell Selection:	Neomycin
Vector:	pCMV6-Entry (PS100001)
E. coli Selection:	Kanamycin (25 ug/mL)



[View online »](#)

ORF Nucleotide Sequence:

>RC200647 ORF sequence
 Red=Cloning site Blue=ORF Green=Tags(s)

TTTTGTAATACGACTCACTATAGGGCGGCCGGGAATTCGTCGACTGGATCCGGTACCGAGGAGATCTGCC
 GCC**CGGATCGCC**

ATGCCCTATAAACTGAAAAAGGAGAAGGAGCCCCCAAGTTGCCAAATGCACAGCCAAGCCTAGCAGCT
 CGGGCAAGGATGGTGGAGGCGAGAACACTGAGGAGGCCAGCCGAGCCCCAGCCCCAGCCCCAGCCCCA
 AGCCAGTCTCAGCCACCGTCATCCAACAAGCGTCCCAGCAATAGCACGCCGCCCCACGCAGCTCAGC
 AAAATCAAGTACTCAGGGGGGCCCCAGATTGTCAAGAAGGAGCTGTTTATCCAGAAGCTACGCCAGTGCT
 GTGTCTCTTTGACTTCGTGTCAGACCCACTCAGTGACCTCAAATTAAGGAGGTGAAGCGGGCAGGACT
 CAACGAGATGGTGGAGTACATCACCCATAGCCGTGATGTTGTCAGTGGCCATTTACCCTGAGGCTGTC
 ACCATGTTTTAGTGAACTCTCCGGACGCTGCCACCTCATCGAATCCACAGGGGCTGAGTTTGACC
 CAGAGGAAGATGAGCCCACCCTGGAAGCTGCTTGGCCACATCTCCAGCTCGTGTATGAGTCTTCTTACG
 TTTCTTGAGTCTCTGATTTCCAGCCAAACATAGCCAAGAAGTACATCGACCAGAAGTTTGTACTTGCT
 CTCTAGACCTATTTGACAGTGAGGATCCCTCGAGAGCGGGACTTCTCAAGACCATTTTGCATCGCATCT
 ATGGCAAGTTTTTGGGGCTCCGGGCTTATATCCGTAGGCAGATCAACCACATCTTCTACAGTTTCTACTA
 CGAGACGGAGCATCACAACGGGATTGCTGAGCTCCTGGAGATCCTGGGCAGCATCATCAATGGCTTTGCC
 CTGCCCTTAAAGAAGAGCACAAGATGTTCTCATCCGTGTCCTACTTCCCCTTACAAGGTCAAGTCCC
 TGAGTGTCTACCACCCTCAGCTGGCATACTGTGTGGTACAATTCCTGGAGAAGGAGAGCAGTCTGACTGA
 GCCGTAATTGTGGGACTTCTCAAGTTTGGCCCAAGACCACAGCCCCAAGGAGGTGATGTTCTTGAAT
 GAGCTGGAGGAGATTCTGGACGTCATTGAACCTCTGAGTTCAGCAAAGTATGGAACCCCTCTCCGCC
 AGCTGGCCAAGTGTCTCTAGCCCCATTTCCAGGTGGCAGCGGTGCTCTCTATTACTGGAACAATGA
 GTACATCATGAGCTGATAAGTGACAATGCTGCCGAGTCTCCCATCATGTTCCCTGCACTCTACAGG
 AACTCCAAGGCCACTGGAACAAGACAATCCATGGACTGATCTATAATGCCCTGAAGTTGTTTATGGAAA
 TGAATCAGAAGCTGTTTATGACTGCACACAACAATAAAGGCAGAGAAGCAGAAGGGCCGGTCCGAAT
 GAAGGAAAGGGAAGAGATGTGGCAAAAAATCGAGGAGCTGGCCCGGCTTAAATCCCAGTATCCCATGTT
 CGAGCCCCCTCCACTGCCCTGTGTACTCGATGGAGACAGAGACCCACAGCTGAGGACATCCAGC
 TTCTGAAGAGGACTGTGGAGACTGAGGCTGTTCCAGATGCTAAAAGACATCAAGAAGGAGAAAGTGTCT
 GCGGAGGAAGTCGGAGCTGCCCCAGGACGTGTACACCATCAAGGCACTGGAGGCGCACAGCGGGCGGAA
 GAGTTCCTAACTGCCAGCCAGGAGGCTCTC

ACGCGTACGCGGGCCGCTCGAGCAGAAACTCATCTCAGAAGAGGATCTGGCAGCAAATGATATCCTGGATT
 ACAAGGATGACGACGATAAGGTTTAA

Protein Sequence:

>RC200647 protein sequence
 Red=Cloning site Green=Tags(s)

MPYKLKKEKPPKVAKCTAKPSSSGKDGGENTEEAQPQPQPQPQAQSQPPSSNKRPSNSTPPPTQLS
 KIKYSGGPQIVKKELFIQKLRQCCVLFDFVSDPLSDLKFKEVKRAGLNEMVEYITHSRDVVTEAIYPEAV
 TMSVNLFRLLPSSNPTGAEFDPEEDEPTLEAAWPHLQLVYEFFLRFLESPDFQPNIAKKYIDQKFVLA
 LLDLFDSEDPREDFLKTILHRIYGKFLGLRAYIRRQINHIYRFIYETEHHNGIAELLEILGSIINGFA
 LPLKEEHKMFILRVLLPLHKVKSLSVYHPQLAYCVVQFLEKESSLTEPVIIVGLLKFWPKTHSPKEMFLN
 ELEEILDVIEPSEFSKVMELFRQLAKCVSSPHFQVAERALYYWNNEYIMSLISDNAARVLPIMFPALYR
 NSKSHWNKTIHGLIYNALKLFMEMNQKLFDDCTQQYKAEKQKGRFRMKEREEMWQKIEELARLNQYPMF
 RAPPPLPPVYSMETETPTAEDIQLLKRTVETEAQMLKDIKKEKVLRRKSELQDVVYTIKALEAHKRAE
 EFLTASQEAL

TRTRPLEQKLISEEDLAANDILDYKDDDDKV

Chromatograms:

https://cdn.origene.com/chromatograms/mk6583_b12.zip

Restriction Sites:

Sgfl-Mlul

Cloning Scheme:


ACCN: NM_180976

ORF Size: 1710 bp

OTI Disclaimer: The molecular sequence of this clone aligns with the gene accession number as a point of reference only. However, individual transcript sequences of the same gene can differ through naturally occurring variations (e.g. polymorphisms), each with its own valid existence. This clone is substantially in agreement with the reference, but a complete review of all prevailing variants is recommended prior to use. [More info](#)

OTI Annotation: This clone was engineered to express the complete ORF with an expression tag. Expression varies depending on the nature of the gene.

Components: The ORF clone is ion-exchange column purified and shipped in a 2D barcoded Matrix tube containing 10ug of transfection-ready, dried plasmid DNA (reconstitute with 100 ul of water).

- Reconstitution Method:**
1. Centrifuge at 5,000xg for 5min.
 2. Carefully open the tube and add 100ul of sterile water to dissolve the DNA.
 3. Close the tube and incubate for 10 minutes at room temperature.
 4. Briefly vortex the tube and then do a quick spin (less than 5000xg) to concentrate the liquid at the bottom.
 5. Store the suspended plasmid at -20°C. The DNA is stable for at least one year from date of shipping when stored at -20°C.

Note: Plasmids are not sterile. For experiments where strict sterility is required, filtration with 0.22um filter is required.

RefSeq: [NM_180976.3](#)

RefSeq Size: 2969 bp

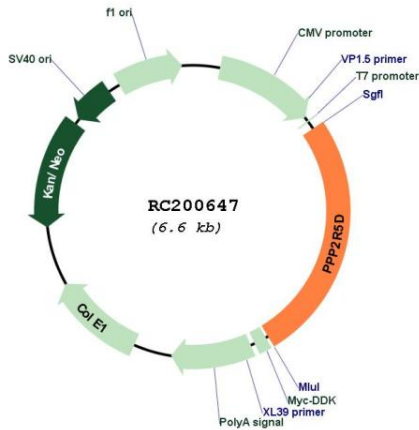
RefSeq ORF: 1713 bp

Locus ID: 5528

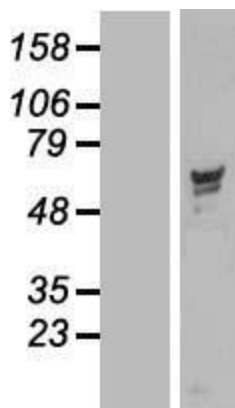
UniProt ID: [Q14738](#)
 Cytogenetics: 6p21.1
 Protein Families: Phosphatase
 Protein Pathways: Oocyte meiosis, Wnt signaling pathway
 MW: 66.2 kDa
 Gene Summary:

The product of this gene belongs to the phosphatase 2A regulatory subunit B family. Protein phosphatase 2A is one of the four major Ser/Thr phosphatases, and it is implicated in the negative control of cell growth and division. It consists of a common heteromeric core enzyme, which is composed of a catalytic subunit and a constant regulatory subunit, that associates with a variety of regulatory subunits. The B regulatory subunit might modulate substrate selectivity and catalytic activity. This gene encodes a delta isoform of the regulatory subunit B56 subfamily. Alternatively spliced transcript variants encoding different isoforms have been identified. [provided by RefSeq, Jul 2008]

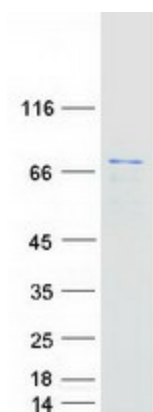
Product images:



Circular map for RC200647



Western blot validation of overexpression lysate (Cat# [LY405833]) using anti-DDK antibody (Cat# [TA50011-100]). Left: Cell lysates from untransfected HEK293T cells; Right: Cell lysates from HEK293T cells transfected with RC200647 using transfection reagent MegaTran 2.0 (Cat# [TT210002]).



Coomassie blue staining of purified PPP2R5D protein (Cat# [TP300647]). The protein was produced from HEK293T cells transfected with PPP2R5D cDNA clone (Cat# RC200647) using MegaTran 2.0 (Cat# [TT210002]).