

Product datasheet for RC200645

SERPINB9 (NM_004155) Human Tagged ORF Clone

Product data:

Product Type:	Expression Plasmids
Product Name:	SERPINB9 (NM_004155) Human Tagged ORF Clone
Tag:	Myc-DDK
Symbol:	SERPINB9
Synonyms:	CAP-3; CAP3; PI-9; PI9
Mammalian Cell Selection:	Neomycin
Vector:	pCMV6-Entry (PS100001)
E. coli Selection:	Kanamycin (25 ug/mL)
ORF Nucleotide Sequence:	>RC200645 ORF sequence Red=Cloning site Blue=ORF Green=Tags(s)

TTTTGTAATACGACTCACTATAGGGCGCCGGAATTCGTCGACTGGATCCGGTACCGAGGAGATCTGCC
GCC**CGATCGCC**

ATGGAACTCTTTCTAATGCAAGTGGTACTTTTGCATACGCCTTTAAAGATACTGTGTCAAGATAACC
CTTCGCACAACGTGTTCTGTTCTCCTGTGAGCATCTCCTCTGCCCTGGCCATGGTTCTCTAGGGGCAA
GGGAAACACCGCAACCCAGATGGCCAGGCACTGTCTTTAAACACAGAGGAAGACATTATCGGGCTTTC
CAGTCGCTTCTCACTGAAGTGAACAAGGCTGGCACACAGTACCTGCTGAGAACGGCAACAGGCTCTTTG
GAGAGAAAACCTTGTGAGTTCCTCTCAACGTTTAAAGGAATCCTGTCTTCAATTCTACCATGCTGAGCTGAA
GGAGCTTTCCTTTATCAGAGCTGCAGAAGAGTCCAGGAAACACATCAACACCTGGGTCTCAAAAAGACC
GAAGGTAATAAGAGTTGTTGCCGGGTAGCTCAATTGATGCAGAAACAGGCTGGTCTTGTCAATG
CCATCTACTTCAAAGGAAAGTGAATGAACCGTTTACGAAACATACACAAGGAAATGCCCTTTAAAT
AAACCAGGAGGAGCAAAGGCCAGTGCAGATGATGATCAGGAGGCCACGTTTAAAGCTCGCCACGTGGGC
GAGGTGCGCGCGCAGCTGCTGGAGCTGCCCTACGCCAGGAAGGAGCTGAGCCTGCTGGTGTGCTGCCTG
ACGACGGCGTGGAGCTCAGCACGGTGGAAAAAGTCTCACTTTGAGAACTCACAGCCTGGACCAAGCC
AGACTGTATGAAGAGTACTGAGGTTGAAGTTCCTTCCAAAATTTAAACTACAAGAGGATTATGACATG
GAATCTGTGCTTCGGCATTGGGAATTGTTGATGCCTTCAACAGGGCAAGGCTGACTTGTGGCAATGT
CAGCGGAGAGAGACCTGTGTCTGTCCAAGTTCGTGCACAAGAGTTTGTGGAGGTAATGAAGAAGGCAC
CGAGGCAGCGGCAGCGTGCAGCTGCTTTGTAGTTGCAGAGTGTGCATGGAATCTGGCCCCAGGTTCTGT
GCTGACCACCTTTCCTTTTCTTCATCAGGCACAACAGAGCCAACAGCATTCTGTTCTGTGGCAGGTTCT
CATCGCCA

ACGCGTACGCGGCCGCTCGAGCAGAACTCATCTCAGAAGAGGATCTGGCAGCAATGATATCCTGGATT
ACAAGGATGACGACGATAAGGTTTAA



[View online >](#)

Protein Sequence: >RC200645 protein sequence
Red=Cloning site Green=Tags(s)

METLSNASGTFAIRLLKILCQDNPSHNVFCSPVSISSALAMVLLGAKGNTATQMAQALSLNTEEDIHRAF
 QSLLTEV NKAGTQYLLRTANRLFGEKTCQFLSTFKESCLQFYHAELKELSFIRAAEESRKHINTWVSKKT
 EGKIEELLPGSSIDAETRLVLVNAIYFKGKWNEPFDETYTREMPFKINQEEQRPVQMMYQEATFKLAHVG
 EVRAQLLELPYARKELSLLVLLPDDGVELSTVEKSLTFEKLTAWTKPDCMKSTEVEVLLPKFKLQEDYDM
 ESLRHLGIVDAFQQGKADLSAMSAERDLCLSKFVHKSFEVNEEGTEAAAASSCFVVAECCMESGPRFC
 ADHPFLFFIRHNRANSILFCGRFSSP

TRTRPLEQKLISEEDLAANDILDYKDDDDKV

Chromatograms: https://cdn.origene.com/chromatograms/mk6065_d02.zip

Restriction Sites: SgfI-MluI

Cloning Scheme:



ACCN: NM_004155

ORF Size: 1128 bp

OTI Disclaimer: The molecular sequence of this clone aligns with the gene accession number as a point of reference only. However, individual transcript sequences of the same gene can differ through naturally occurring variations (e.g. polymorphisms), each with its own valid existence. This clone is substantially in agreement with the reference, but a complete review of all prevailing variants is recommended prior to use. [More info](#)

OTI Annotation: This clone was engineered to express the complete ORF with an expression tag. Expression varies depending on the nature of the gene.

Components: The ORF clone is ion-exchange column purified and shipped in a 2D barcoded Matrix tube containing 10ug of transfection-ready, dried plasmid DNA (reconstitute with 100 ul of water).

Reconstitution Method:

1. Centrifuge at 5,000xg for 5min.
2. Carefully open the tube and add 100ul of sterile water to dissolve the DNA.
3. Close the tube and incubate for 10 minutes at room temperature.
4. Briefly vortex the tube and then do a quick spin (less than 5000xg) to concentrate the liquid at the bottom.
5. Store the suspended plasmid at -20°C. The DNA is stable for at least one year from date of shipping when stored at -20°C.

Note: Plasmids are not sterile. For experiments where strict sterility is required, filtration with 0.22um filter is required.

RefSeq: [NM_004155.6](#)

RefSeq Size: 4167 bp

RefSeq ORF: 1131 bp

Locus ID: 5272

UniProt ID: [P50453](#)

Cytogenetics: 6p25.2

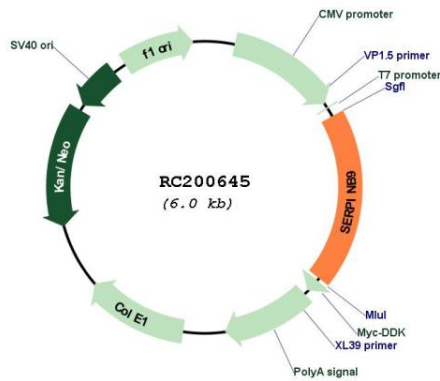
Domains: SERPIN

Protein Families: Druggable Genome

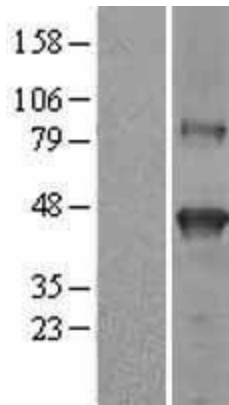
MW: 42.4 kDa

Gene Summary: This gene encodes a member of the serine protease inhibitor family which are also known as serpins. The encoded protein belongs to a subfamily of intracellular serpins. This protein inhibits the activity of the effector molecule granzyme B. Overexpression of this protein may prevent cytotoxic T-lymphocytes from eliminating certain tumor cells. A pseudogene of this gene is found on chromosome 6. [provided by RefSeq, Mar 2012]

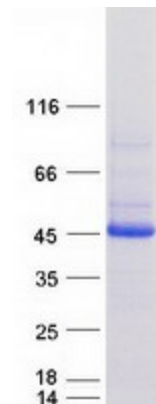
Product images:



Circular map for RC200645



Western blot validation of overexpression lysate (Cat# [LY418182]) using anti-DDK antibody (Cat# [TA50011-100]). Left: Cell lysates from untransfected HEK293T cells; Right: Cell lysates from HEK293T cells transfected with RC200645 using transfection reagent MegaTran 2.0 (Cat# [TT210002]).



Coomassie blue staining of purified SERPINB9 protein (Cat# [TP300645]). The protein was produced from HEK293T cells transfected with SERPINB9 cDNA clone (Cat# RC200645) using MegaTran 2.0 (Cat# [TT210002]).