

Product datasheet for **RC200644**

EXT1 (NM_000127) Human Tagged ORF Clone

Product data:

Product Type:	Expression Plasmids
Product Name:	EXT1 (NM_000127) Human Tagged ORF Clone
Tag:	Myc-DDK
Symbol:	EXT1
Synonyms:	EXT; LGCR; LGS; TRPS2; TTV
Mammalian Cell Selection:	Neomycin
Vector:	pCMV6-Entry (PS100001)
E. coli Selection:	Kanamycin (25 ug/mL)



[View online »](#)

ORF Nucleotide Sequence:

>RC200644 ORF sequence
 Red=Cloning site Blue=ORF Green=Tags(s)

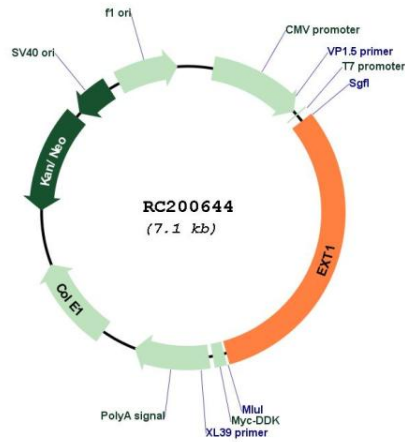
TTTTGTAATACGACTCACTATAGGGCGGCCGGGAATTCGTGACTGGATCCGGTACCGAGGAGATCTGCC
 GCC**CGGATCGCC**

ATGCAGGCCAAAAACGCTATTTTCATCCTGCTCTCAGCTGGCTTGTCTCGCCCTTTGTTTTATTTCG
 GAGGCTTGCAGTTTAGGGCATCGAGGAGCCACAGCCGGAGAGAAGAACACAGCGGTAGGAATGGCTTGCA
 CCACCCAGTCCGGATCATTCTGGCCCGCTTCCCGGACGCTCTGCGCCCTTCGTTCCCTGGGATCAA
 TTGAAAAACGAGGATTCCAGCGTGCACATTTCCCGCGCAGAAGCGAGATGCCAACTCCAGCATCTACA
 AAGGCAAGAAGTGCCGCATGGAGTCTGCTTCGATTTACCCCTTTCGCAAGAAAAACGGCTTCAAAGTCTA
 CGTATACCCACAGCAAAAAGGGGAGAAAATCGCCGAAAGTTACCAAAACATTCTAGCGGCCATCGAGGGC
 TCCAGTTCTACACCTCGGACCCAGCCAGGCGTGCCTCTTGTCTGAGTCTGGATACTTTAGACAGAG
 ACCAGTTGTACCTCAGTATGTGCACAATTTGAGATCCAAAGTGCAGAGTCTCCACTTGTGGAACAATGG
 TAGGAATCATTTAATTTTAATTTATATTCGGCACTTGGCCTGACTACCCGAGGACGTGGGGTTTGAC
 ATCGGCCAGGCGATGCTGGCCAAAGCCAGCATCAGTACTGAAAACCTCCGACCCAACTTTGATGTTTCTA
 TTCCCTCTTTTCTAAGGATCATCCAGGACAGGAGGGGAGAGGGGGTTTTTGAAGTTCAACACCATCCC
 TCCTCTCAGGAAGTACATGCTGGTATTCAAGGGGAAGAGGTACCTGACAGGGATAGGATCAGACACCAGG
 AATGCCTTATATCACGTCATAACGGGGAGGACGTTGTGCTCCTCACCACCTGCAAGCATGGCAAAGACT
 GGCAAAAGCACAAGGATTCTCGTGTGACAGAGACAACACCGAGTATGAGAAGTATGATTATCGGGAAAT
 GCTGCACAATGCCACTTCTGTCTGGTTCTCGTGGTTCGAGGCTTGGTCCCTCAGATTCTGGAGGCT
 TTGCAGGCTGCCTGCGTCCCTGTGATGCTCAGCAATGGATGGGAGTTGCCATTCTCTGAAGTGATTAATT
 GGAACCAAGTCCGTCATAGGCGATGAGAGATTGTTATTACAGATTCTTCTACAATCAGTCTATTCA
 TCAGGATAAAAATCCTAGCACTTAGACAGCAGACACAATTCCTTGTGGGAGGCTTATTTTCTCAGTTGAG
 AAGATTGTATTAACACTAGAGATTATTCAGGACAGAATATTCAAGCACATATCACGTAACAGTTTAA
 TATGGAACAAACATCCTGGAGGATTGTTCTGACTACCACAGTATTCATCTTATCTGGGAGATTTTCTTA
 CTACTATGCTAATTTAGGTTTAAAGCCCCCTCCAAATCACTGCAGTATCCATGCGGTGACCCCTG
 GTCTCTCAGTCCCAGCCAGTGTGAAAGCTTCTCGTGGTGCAGCCAAGTCCCAGTACTGTGCCAGATCA
 TAGTTCTATGGAATTGTGACAAGCCCTACCAGCCAAACACCGCTGGCCTGCCACTGCTGTGCTGTCGT
 CGTCATTGAAGGAGAGAGCAAGGTTATGAGCAGCCGTTTTCTGCCCTACGACAACATCATCACAGACGCC
 GTGCTCAGCCTTGACGAGGACACGGTGTTCACAACAGAGGTGGATTCGCCTCACAGTGTGGCAGA
 GCTTCCCTGAGAGGATTGTGGGGTACCCCGCGCAGCCACTTCTGGGATAACTCTAAGGAGCGGTGGGG
 ATACACATCAAAGTGGACGAACGACTACTCCATGGTGTGACAGGAGCTGCTATTTACCACAAATATTAT
 CACTACCTATACTCCCATTACCTGCCAGCCAGCCTGAAGAACATGGTGGACCAATTGGCCAAATGTGAGG
 ACATTCTCATGAACTTCTGGTGTCTGCTGTGACAAAAATGCCTCCAATCAAAGTGACCCAGAAGAAGCA
 GTATAAGGAGACAATGATGGGACAGACTTCTCGGGCTTCCCGTTGGGCTGACCCTGACCCTTTGCCAG
 CGACAGAGCTGCATGAATACGTTTGCCAGCTGGTTGGCTACATGCCGCTGATCCACTCTCAGATGAGGC
 TCGACCCCGTCTCTTTAAAGACCAGGTCTCTATTTTGAAGGAAGAATACCGAGACATTGAGCGACTT

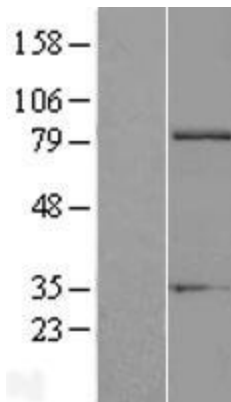
ACGCGTACGCGGCCGCTCGAGCAGAAACTCATCTCAGAAGAGGATCTGGCAGCAAATGATATCCTGGATT
 ACAAGGATGACGACGATAAGGTTTAA

Components:	The ORF clone is ion-exchange column purified and shipped in a 2D barcoded Matrix tube containing 10ug of transfection-ready, dried plasmid DNA (reconstitute with 100 ul of water).
Reconstitution Method:	<ol style="list-style-type: none">1. Centrifuge at 5,000xg for 5min.2. Carefully open the tube and add 100ul of sterile water to dissolve the DNA.3. Close the tube and incubate for 10 minutes at room temperature.4. Briefly vortex the tube and then do a quick spin (less than 5000xg) to concentrate the liquid at the bottom.5. Store the suspended plasmid at -20°C. The DNA is stable for at least one year from date of shipping when stored at -20°C.
Note:	Plasmids are not sterile. For experiments where strict sterility is required, filtration with 0.22um filter is required.
RefSeq:	NM_000127.3
RefSeq Size:	3376 bp
RefSeq ORF:	2241 bp
Locus ID:	2131
UniProt ID:	Q16394
Cytogenetics:	8q24.11
Domains:	Exostosin
Protein Families:	Druggable Genome, Transmembrane
Protein Pathways:	Heparan sulfate biosynthesis, Metabolic pathways
MW:	86.3 kDa
Gene Summary:	This gene encodes an endoplasmic reticulum-resident type II transmembrane glycosyltransferase involved in the chain elongation step of heparan sulfate biosynthesis. Mutations in this gene cause the type I form of multiple exostoses. [provided by RefSeq, Jul 2008]

Product images:



Circular map for RC200644



Western blot validation of overexpression lysate (Cat# [LY424905]) using anti-DDK antibody (Cat# [TA50011-100]). Left: Cell lysates from untransfected HEK293T cells; Right: Cell lysates from HEK293T cells transfected with RC200644 using transfection reagent MegaTran 2.0 (Cat# [TT210002]).