

Product datasheet for **RC200643**

Emerin (EMD) (NM_000117) Human Tagged ORF Clone

Product data:

Product Type:	Expression Plasmids
Product Name:	Emerin (EMD) (NM_000117) Human Tagged ORF Clone
Tag:	Myc-DDK
Symbol:	Emerin
Synonyms:	EDMD; LEMD5; STA
Mammalian Cell Selection:	Neomycin
Vector:	pCMV6-Entry (PS100001)
E. coli Selection:	Kanamycin (25 ug/mL)
ORF Nucleotide Sequence:	>RC200643 ORF sequence Red=Cloning site Blue=ORF Green=Tags(s)

TTTTGTAATACGACTCACTATAGGGCGCCGGGAATTCGTCGACTGGATCCGGTACCGAGGAGATCTGCC
GCC**CGATCGCC**

ATGGACAACACGCAGATCTTTTCGGATACCGAGCTGACCACCTTGCTGCGCCGGTACAACATCCCGCACG
GGCCTGTAGTAGGATCAACTCGTAGGCTTTACGAGAAGAAGATCTTCGAGTACGAGACCCAGAGGCGGCG
GCTCTCGCCCCCAGCTCGTCCGCCCTCTTATAGCTTCTCTGACTTGAATTCGACTAGAGGGGAT
GCAGATATGTATGATCTTCCAAGAAAGAGGACGCTTTACTCTACCAGAGCAAGGGCTACAATGACGACT
ACTATGAAGAGAGCTACTTCACCACCAGGACTTATGGGGAGCCCGAGTCTGCCGGCCGTCAGGGCTGT
CCGCCAGTCAGTACTTCATTCCAGATGCTGACGCTTTCCATCACCGAGTGCATGATGACGATCTTTTG
TCTTCTTCTGAAGAGGAGTGCAAGGATAGGGAACGCCCATGTACGGCCGGGACAGTGCCTACCAGAGCA
TCACGCACTACCGCCCTGTTTCAGCCTCCAGGAGCTCCCTGGACCTGTCTATTATCCTACTTCTCCTC
CACCTCTTTATGTCTCCTCATCATCTTCTTTCATGGCTCACCCGCCGTGCCATCCGGCCTGAAAAC
CGTGCTCCTGGGGCTGGGCTGGGCCAGGATCGCCAGGTCGCCGCTCTGGGGCCAGCTGCTGCTTTCTCG
TCTTTGTGATCGTCTCTTCTTACCTTACCACTTCATGCAGGCTGAAGAAGGCAACCCCTC

ACGCGTACGCGGCCGCTCGAGCAGAACTCATCTCAGAAGAGGATCTGGCAGCAAATGATATCCTGGATT
ACAAGGATGACGACGATAAGGTTTAA



[View online »](#)

Protein Sequence: >RC200643 protein sequence
 Red=Cloning site Green=Tags(s)

MDNYADLSDEL TLLRRYNIPHG PVVGSTRRLYEKKIFEYETQRRRLSPSSSAASSYSFSDLNSTRGD
 ADMYDLPKKEDALLYQSKGYNDYYEESYFTTRTYGEPESAGPSRAVRQSVTSFPDADAFHHQVHDDLL
 SSSEEECKDRERPMYGRDSAYQSI THYRPVSASRSLDLSYYPTSSTSFMSSSSSSSSWL TRRAIRPEN
 RAPGAGLGQDRQVPLWGQLLLFLVFIVLFFIYHFMQAEEGNPF

TRTRPLEQKLISEEDLAANDILDYKDDDDKV

Chromatograms: https://cdn.origene.com/chromatograms/mk6143_d11.zip

Restriction Sites: SgfI-MluI

Cloning Scheme:

Cloning sites used for ORF Shuttling:



* The last codon before the Stop codon of the ORF

ACCN: NM_000117

ORF Size: 762 bp

OTI Disclaimer: The molecular sequence of this clone aligns with the gene accession number as a point of reference only. However, individual transcript sequences of the same gene can differ through naturally occurring variations (e.g. polymorphisms), each with its own valid existence. This clone is substantially in agreement with the reference, but a complete review of all prevailing variants is recommended prior to use. [More info](#)

OTI Annotation: This clone was engineered to express the complete ORF with an expression tag. Expression varies depending on the nature of the gene.

Components: The ORF clone is ion-exchange column purified and shipped in a 2D barcoded Matrix tube containing 10ug of transfection-ready, dried plasmid DNA (reconstitute with 100 ul of water).

Reconstitution Method:

1. Centrifuge at 5,000xg for 5min.
2. Carefully open the tube and add 100ul of sterile water to dissolve the DNA.
3. Close the tube and incubate for 10 minutes at room temperature.
4. Briefly vortex the tube and then do a quick spin (less than 5000xg) to concentrate the liquid at the bottom.
5. Store the suspended plasmid at -20°C. The DNA is stable for at least one year from date of shipping when stored at -20°C.

RefSeq: [NM_000117.3](#)

RefSeq Size: 1370 bp

RefSeq ORF: 765 bp

Locus ID: 2010

UniProt ID: [P50402](#)

Cytogenetics: Xq28

Domains: LEM

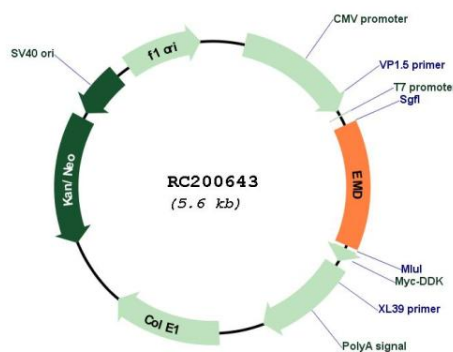
Protein Families: Druggable Genome, Transmembrane

Protein Pathways: Arrhythmogenic right ventricular cardiomyopathy (ARVC), Dilated cardiomyopathy, Hypertrophic cardiomyopathy (HCM)

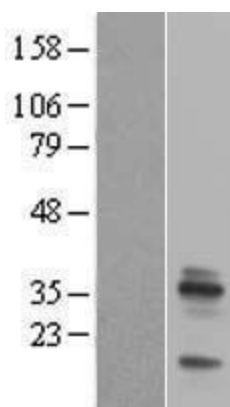
MW: 29 kDa

Gene Summary: Emerin is a serine-rich nuclear membrane protein and a member of the nuclear lamina-associated protein family. It mediates membrane anchorage to the cytoskeleton. Dreifuss-Emery muscular dystrophy is an X-linked inherited degenerative myopathy resulting from mutation in the emerin gene. [provided by RefSeq, Jul 2008]

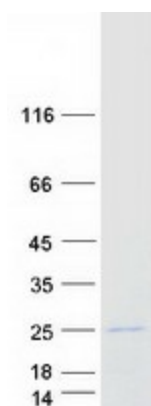
Product images:



Circular map for RC200643



Western blot validation of overexpression lysate (Cat# [LY400039]) using anti-DDK antibody (Cat# [TA50011-100]). Left: Cell lysates from untransfected HEK293T cells; Right: Cell lysates from HEK293T cells transfected with RC200643 using transfection reagent MegaTran 2.0 (Cat# [TT210002]).



Coomassie blue staining of purified EMD protein (Cat# [TP300643]). The protein was produced from HEK293T cells transfected with EMD cDNA clone (Cat# RC200643) using MegaTran 2.0 (Cat# [TT210002]).