

Product datasheet for **RC200630**

NCBP1 (NM_002486) Human Tagged ORF Clone

Product data:

Product Type:	Expression Plasmids
Product Name:	NCBP1 (NM_002486) Human Tagged ORF Clone
Tag:	Myc-DDK
Symbol:	NCBP1
Synonyms:	CBP80; NCBP; Sto1
Mammalian Cell Selection:	Neomycin
Vector:	pCMV6-Entry (PS100001)
E. coli Selection:	Kanamycin (25 ug/mL)



[View online »](#)

ORF Nucleotide
Sequence:

>RC200630 ORF sequence
Red=Cloning site Blue=ORF Green=Tags(s)

TTTTGTAATACGACTCACTATAGGGCGGCCGGGAATTCGTCGACTGGATCCGGTACCGAGGAGATCTGCC
GCC**CGCATCGCC**

ATGTCGCGCGCGGCACAGCGACGAGAACGACGGTGGCAGCCTCACAAAAGGAGAAAGACCTCTGATG
CAAATGAAACTGAAGATCATTGGAACTTTAATATGTAAAGTAGGAGAAAAGAGTGCCTGCTCTTTGGA
GAGCAACCTAGAAGGCTTGGCTGGTGTGGAAAGCTGATCTTCTAACTACAAGAGCAAGATCTTAAGG
CTTCTTTGTACAGTTGCACGCCTATTACCTGAGAAGCTGACAATTTATACAACATTAGTTGGACTACTGA
ATGCCAGGAATTACAATTTGGTGGAGAATTTGTAGAAGCCATGATTCGCAACTAAAGAATCATTGAA
AGCAAACAATTATAATGAAGCCGTGATTTGGTCCGTTTTTATCTGATCTTGTGAATTGTCATGTGATT
GCCGCCCATCAATGGTTGCTATGTTTGAAAATTTGTAAGCGTAACTCAGGAAGAAGATGTACCTCAGG
TGCGACGAGATTGGTATGTGTATGCATTTCTGTCATCTTGGCCCTGGGTTGGAAAGGAGTGTACGAAAA
GAAAGATGCAGAGATGGACCGCATCTTTGCCAACACTGAAAGCTATCTTAAAAGACGCCAAAAGACTCAT
GTACCCATGTTACAGGTATGGACTGCTGATAAACCACATCCACAAGAAGAGTATTTAGATTGCCTGTGGG
CCCAGATTCAGAAATTGAAAAGGATCGCTGGCAGGAACGGCACATCCTAAGACCTTATCTTGCCTTTGA
CAGCATCTGTGTGAAGCACTGCAGCACAATCTGCCTCCTTTACACCACCTCCTCACACTGAAGATTCA
GTGTACCCAATGCCAAGGTCATCTTCAGAATGTTTGATTACACAGATGATCCCAGGGTCTGTGATGC
CAGGGAGTCATTAGTGGAAAGATTTGTAATAGAAGAGAATCTTCACTGCATCATTAAAGTCCCCTGGAA
GGAAAGGAAGACTTGTGCTGCACAGTATGAGGCTATCCAGGGAAGAACAAGATCCCCTTGAAGTACCAC
ATAGTTGAGGTGATCTTGCAGAGCTGTTCAACTCCAGCACCCCTCACATTGATGTGATGTACACAA
CACTCCTCATTGAACTGTGCAAACTTCAACTGGCTCTACCCCAAGTCTTGCACAGGCAACTGAAAT
GCTATACATGCGTTTGGACACAATGAACACTACCTGTGTAGACAGGTTTATTAATTGGTTTTCTCATCAT
CTAAGTAACTTCCAGTTCGTTGGAGCTGGGAAGATTGGTCAGATTGTCTTAGTCAAGATCCTGAAAGTC
CCAAACCGAAGTTTGTAAAGAGAAGTTCTAGAAAAATGTATGAGGTTGTCTTACCATCAGCGTATATTAGA
TATTGTTCTCTACCTTCTCAGCTCTGTGCTGCAACCCACCTGCATTTACAAGTATGGAGATGAA
AGTAGCAATTCTTCTCTGGACATTCTGTTGCCCTCTGTTTAGCTGTGCTTTAAAAGTAAAGGCAACCA
ATGATGAAATCTCAGCATTCTGAAAGATGTACCAAATCCTAACCAGGATGATGACGACGATGAAGGATT
CAGTTTTAACCATTGAAAATAGAAGTCTTTGTACAGACTCTGCTACACTGGCAGCCAAATCATTGAGC
CACTCCTCAGTGTCTTGCAGTTTTCATGAAGTCTTCAAACCCCTAGCTGAAAGTGTGAAAGGAAAGT
TACATGTGCTAAGAGTTATGTTTGGAGTCTGGAGGAACCATCCACAGATGATTGCTGTACTAGTGGATAA
GATGATTTCGTACACAAATAGTTGATTGTGCTGCCGTAGCAAATTTGGATCTTCTTTCAGAACTATCTCGT
GACTTTACCAGATTGTTTGTGGGAAATTTGCACTCTACAATTCGTAAGATGAACAAACATGTCTGTA
AGATCCAGAAAGAGCTGGGAAGAAGCTAAAGAGAAAATTTGCTAGGCAACACAAACGGCGAAGTGTGATGA
CGACAGAAGCAGTGACAGGAAAGACGGGTTCTTGAGGAACAAATAGAACGACTTCAGGAAAAAGTGAA
TCTGCTCAGAGTGAACAAAAGAATCTTTTCTCGTTATATTTAGCGGTTTATCATGATCTTGACCGAGC
ACCTAGTACGATGCGAAACTGATGGGACCAGTGTATTAACACCATGGTATAAGAAGTGTATAGAGAGGCT
GCAGCAGATCTTCTACAGCATCACAAATAATCCAGCAGTACATGGTGACCCTGGAGAACCTTCTCTTC
ACTGCTGAATTAGACCCTCATATCTTGGCCGTGTTCCAGCAGTTCTGTGCCCTGCAGGCC

ACGCGTACGCGGCCGCTCGAGCAGAAACTCATCTCAGAAGAGGATCTGGCAGCAAATGATATCTGGATT
ACAAGGATGACGACGATAAGGTTTAA

Protein Sequence: >RC200630 protein sequence
Red=Cloning site Green=Tags(s)

MSRRRHSDENDGGQPHKRRKTSANETEDHLES L ICKVGEKSACSLESNLEGLAGVLEADLPNYKSKILR
LLCTVARLLPEKLTIIYTTLVGLLNARNYNFGGEFVEAMIRQLKESLKANNYNEAVYLVRFLSDLVNCHVI
AAPSMVAMFENFVSVTQEEDVPQVRRDWYVYAF L SSLPWVGKELYEKKAEMDRIFANTESYLKRRQKTH
VPMLQVWTADKPHPQEEYLDCLWAQIQK L KDRWQERHILRPYLAFDSILCEALQHNLPPFTPPPHTEDS
VYPMPRVIFRMFDYTDDPEGVMPGSHSVERFVIEENLHCIIKSHWKERKTCAAQLVSYPGKNKIPLNYH
IVEVIFAELFQLPAPPHIDVMYTTLLIELCKLQPGSLPQVLAQATEMLYMRLDTMNTTCVDRFINWFSHH
LSNFQFRWSWEDWSDCLSQDPESP KPFVREVLEKCMRLSYHQRI LDIVPPTFSALCPANPTCIYKYGDE
SSNSLPGHSVALCLAVAFKSKATNDEIF SILKDV PNPQDDDDDEGFSFNPLKIEVFVQTL LHLAAKSF S
HSFSALAKFHEVFKTLAESDEGKLHVL RVMFEVWRNHPQMI AVLVDKMIRTQIVDCAAVANWIF SSEL SR
DFTRLFVWEILHSTIRKMNKHVLKIQKELEEAKELARQH KRRSDDDDRSSDRKDGVL EEQIERLQEKVE
SAQSEQKNLFLVIFQRFIMILTEHLVRCETDGT SVLTPWYKNCIERLQQIFLQHHQIIQQYMTLENLLF
TAE LDPHILAVFQQFCALQA

TRTRPLEQKLISEEDLAANDILDYKDDDDKV

Chromatograms: https://cdn.origene.com/chromatograms/mk6291_b05.zip

Restriction Sites: Sgfl-Mlul

Reconstitution Method:

1. Centrifuge at 5,000xg for 5min.
2. Carefully open the tube and add 100ul of sterile water to dissolve the DNA.
3. Close the tube and incubate for 10 minutes at room temperature.
4. Briefly vortex the tube and then do a quick spin (less than 5000xg) to concentrate the liquid at the bottom.
5. Store the suspended plasmid at -20°C. The DNA is stable for at least one year from date of shipping when stored at -20°C.

RefSeq: [NM_002486.5](#)

RefSeq Size: 5381 bp

RefSeq ORF: 2373 bp

Locus ID: 4686

UniProt ID: [Q09161](#)

Cytogenetics: 9q22.33

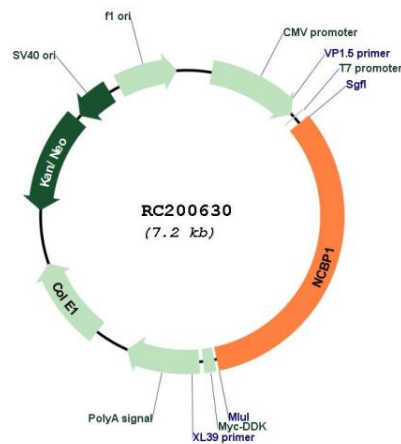
Domains: MIF4G

Protein Pathways: Spliceosome

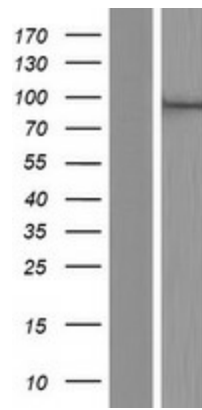
MW: 91.8 kDa

Gene Summary: The product of this gene is a component of the nuclear cap-binding protein complex (CBC), which binds to the monomethylated 5' cap of nascent pre-mRNA in the nucleoplasm. The encoded protein promotes high-affinity mRNA-cap binding and associates with the CTD of RNA polymerase II. The CBC promotes pre-mRNA splicing, 3'-end processing, RNA nuclear export, and nonsense-mediated mRNA decay. [provided by RefSeq, Jul 2008]

Product images:



Circular map for RC200630



Western blot validation of overexpression lysate (Cat# [LY419301]) using anti-DDK antibody (Cat# [TA50011-100]). Left: Cell lysates from untransfected HEK293T cells; Right: Cell lysates from HEK293T cells transfected with RC200630 using transfection reagent MegaTran 2.0 (Cat# [TT210002]).



Coomassie blue staining of purified NCBP1 protein (Cat# [TP300630]). The protein was produced from HEK293T cells transfected with NCBP1 cDNA clone (Cat# RC200630) using MegaTran 2.0 (Cat# [TT210002]).