

Product datasheet for RC200625L1

BCAT2 (NM_001190) Human Tagged Lenti ORF Clone

Product data:

Product Type:	Expression Plasmids
Product Name:	BCAT2 (NM_001190) Human Tagged Lenti ORF Clone
Tag:	Myc-DDK
Symbol:	BCAT2
Synonyms:	BCAM; BCATM; BCT2; HVLI; PP18
Mammalian Cell Selection:	None
Vector:	pLenti-C-Myc-DDK (PS100064)
E. coli Selection:	Chloramphenicol (34 ug/mL)
ORF Nucleotide Sequence:	The ORF insert of this clone is exactly the same as(RC200625).
Restriction Sites:	SgfI-MluI
Cloning Scheme:	

Cloning sites used for ORF Shuttling:



* The last codon before the Stop codon of the ORF.

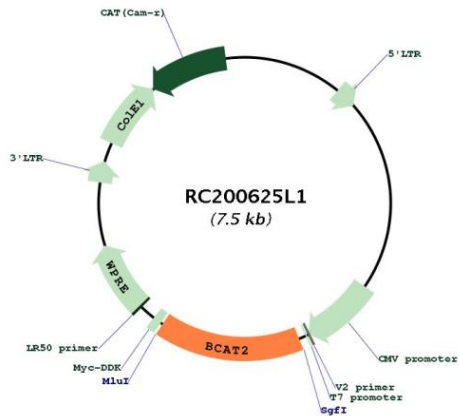
ACCN:	NM_001190
ORF Size:	1176 bp



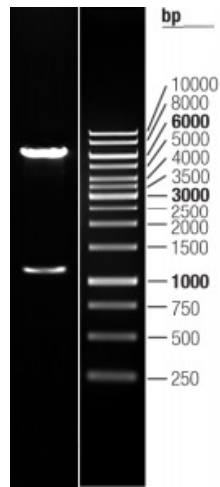
[View online »](#)

OTI Disclaimer:	The molecular sequence of this clone aligns with the gene accession number as a point of reference only. However, individual transcript sequences of the same gene can differ through naturally occurring variations (e.g. polymorphisms), each with its own valid existence. This clone is substantially in agreement with the reference, but a complete review of all prevailing variants is recommended prior to use. More info
OTI Annotation:	This clone was engineered to express the complete ORF with an expression tag. Expression varies depending on the nature of the gene.
Components:	The ORF clone is ion-exchange column purified and shipped in a 2D barcoded Matrix tube containing 10ug of transfection-ready, dried plasmid DNA (reconstitute with 100 ul of water).
Reconstitution Method:	<ol style="list-style-type: none">1. Centrifuge at 5,000xg for 5min.2. Carefully open the tube and add 100ul of sterile water to dissolve the DNA.3. Close the tube and incubate for 10 minutes at room temperature.4. Briefly vortex the tube and then do a quick spin (less than 5000xg) to concentrate the liquid at the bottom.5. Store the suspended plasmid at -20°C. The DNA is stable for at least one year from date of shipping when stored at -20°C.
RefSeq:	NM_001190.2
RefSeq Size:	1616 bp
RefSeq ORF:	1179 bp
Locus ID:	587
UniProt ID:	O15382
Cytogenetics:	19q13.33
Domains:	aminotran_4
Protein Families:	Druggable Genome
Protein Pathways:	Metabolic pathways, Pantothenate and CoA biosynthesis, Valine, leucine and isoleucine biosynthesis, Valine, leucine and isoleucine degradation
MW:	44.3 kDa
Gene Summary:	This gene encodes a branched chain aminotransferase found in mitochondria. The encoded protein forms a dimer that catalyzes the first step in the production of the branched chain amino acids leucine, isoleucine, and valine. Multiple transcript variants encoding different isoforms have been found for this gene. [provided by RefSeq, Sep 2009]

Product images:



Circular map for RC200625L1



Double digestion of RC200625L1 using SgfI and MluI