

## Product datasheet for **RC200608**

### FLIP (CFLAR) (NM\_003879) Human Tagged ORF Clone

#### Product data:

Product Type:	Expression Plasmids
Product Name:	FLIP (CFLAR) (NM_003879) Human Tagged ORF Clone
Tag:	Myc-DDK
Symbol:	FLIP
Synonyms:	c-FLIP; c-FLIPL; c-FLIPR; c-FLIPS; CASH; CASP8AP1; Casper; cFLIP; CLARP; FLAME; FLAME-1; FLAME1; FLIP; I-FLICE; MRIT
Mammalian Cell Selection:	Neomycin
Vector:	pCMV6-Entry (PS100001)
E. coli Selection:	Kanamycin (25 ug/mL)



[View online »](#)

**ORF Nucleotide Sequence:**

>RC200608 ORF sequence  
 Red=Cloning site Blue=ORF Green=Tags(s)

TTTTGTAATACGACTCACTATAGGGCGGCCGGAATTCGTCGACTGGATCCGGTACCGAGGAGATCTGCC  
 GCC**GCGATCGCC**

ATGTCTGTGTAAGTCATCCATCAGTTGAAGAAGCACTTGATACAGATGAGAAGGAGATGCTGCTTTTT  
 TGTGCCGGGATGTTGCTATAGATGTGGTCCACCTAATGTCAGGGACCTTCTGGATATTTTACGGGAAAG  
 AGGTAAGCTGTCTGTCGGGGACTTGGCTGAAGTCTCTACAGAGTGAGGCGATTTGACCTGCTCAAACGT  
 ATCTTGAAGATGGACAGAAAAGCTGTGGAGACCCACCTGCTCAGGAACCTCACCTTGTTTCGGACTATA  
 GAGTGCTGATGGCAGAGATTGGTGAGGATTTGGATAAATCTGATGTGTCCTATTAATTTTCTCATGAA  
 GGATTACATGGGCCGAGGCAAGATAAGCAAGGAGAAGAGTTTCTTGACCTTGTTGGTGGAGAAA  
 CTAATCTGGTTGCCAGATCAACTGGATTTATTAGAAAATGCCTAAGAACATCCACAGAATAGACC  
 TGAAGACAAAAATCCAGAAGTACAAGCAGTCTGTTCAAGGAGCAGGACAAGTTACAGGAATGTTCTCCA  
 AGCAGCAATCCAAAAGAGTCTCAAGGATCTTCAAATAACTTCAGGCTCCATAATGGGAGAAGTAAAGAA  
 CAAAGACTTAAGGAACAGCTTGGCGCTCAACAAGAACCAGTGAAGAAATCCATTCAGGAATCAGAAGCTT  
 TTTTGCCTCAGAGCATACCTGAAGAGAGATACAAGATGAAGAGCAAGCCCTAGGAATCTGCCTGATAAT  
 CGATTGCATTGGCAATGAGACAGAGCTTCTTCGAGACACCTTCACTTCCCTGGGCTATGAAGTCCAGAAA  
 TTCTTGCATCTCAGTATGCATGGTATATCCAGATTCTTGCCAAATTTGCCTGTATGCCCGAGCACCGAG  
 ACTACGACAGCTTTGTGTGTCTCTGGTGAGCCGAGGAGGCTCCCAGAGTGTGTATGGTGTGGATCAGAC  
 TCACTCAGGGCTCCCCGCATCACATCAGGAGGATGTTTATGGGAGATTATGCCCTTATCTAGCAGGG  
 AAGCCAAAGATGTTTTTATTAGAAGTATGTGGTGTGAGAGGCAAGTCAAGGCTCAGAAGCAGGGCTGTGCAGTTCACCG  
 AGAAGCTGACTTCTTCTGGAGCCTGTGTACTGCGGACATGTCCTGCTGGAGCAGTCTCACAGTCCACCA  
 TCCTGTACCTGCAGTGCCTCTCCAGAACTGAGACAAGAAAAGAAAACGCCACTCCTGGATCTTCACA  
 TTGAAGTCAATGGCTACATGTATGATTGGAACAGCAGAGTTTCTGCCAAGGAGAAATATTATGTCTGGCT  
 GCAGCACACTCTGAGAAAAGAACTTATCTCTCTACACA

**ACGCGT**ACGCGGCCGCTCGAGCAGAAACTCATCTCAGAAGAGGATCTGGCAGCAAATGATATCCTGGATT  
 ACAAGGATGACGACGATAAGGTTTAA

**Protein Sequence:**

>RC200608 protein sequence  
 Red=Cloning site Green=Tags(s)

MSAEVIHQVEEALDTDEKEMLLFLCRDVAIDVPPNVRDLLDILRERKLSVGDLAELLYRVRFDLLKR  
 ILKMDRKAVETHLLRNPHLVSDYRVLMAEIGEDLDKSDVSSLIFLMKDYMRGKI SKEKSFLDLVVELEK  
 LNLVAPDQLDLEKLNHRIDLKTKIQKYKQSVQAGTSYRNVLQAAIQKSLKDPNSNFRLNHNGRSKE  
 QRLKEQLGAQQEPVKKSIQESEAFLPQSIPEERYKMKSKPLGICLIIDCIGNETELLRDFTSLGYEVQK  
 FLHLSMHGISQILGQFACMPEHRDYDSFVCLVSRGGSQSVYGVQDTHSGLPLHHIRRMFMGDSCPYLGA  
 KPKMFFIQNYVYVSEGQLEDSSLLEVDGPAMKNVEFKAQKRGLCTVHREADFFWSLCTADMSLLEQSHSSP  
 SLYLQCLSQKLRQERKRPLLDLHIELNGYMYDWNRSRVSKEKYVWVWQHTLRKKLILSYT

**TRTRPLEQKLI**SEEDLAANDILDYKDDDDKV

**Chromatograms:**

[https://cdn.origene.com/chromatograms/mk6081\\_g09.zip](https://cdn.origene.com/chromatograms/mk6081_g09.zip)

**Restriction Sites:**

Sgfl-Mlul

**Cloning Scheme:**


**ACCN:** NM\_003879

**ORF Size:** 1440 bp

**OTI Disclaimer:** Due to the inherent nature of this plasmid, standard methods to replicate additional amounts of DNA in E. coli are highly likely to result in mutations and/or rearrangements. Therefore, OriGene does not guarantee the capability to replicate this plasmid DNA. Additional amounts of DNA can be purchased from OriGene with batch-specific, full-sequence verification at a reduced cost. Please contact our customer care team at [custsupport@origene.com](mailto:custsupport@origene.com) or by calling 301.340.3188 option 3 for pricing and delivery.

The molecular sequence of this clone aligns with the gene accession number as a point of reference only. However, individual transcript sequences of the same gene can differ through naturally occurring variations (e.g. polymorphisms), each with its own valid existence. This clone is substantially in agreement with the reference, but a complete review of all prevailing variants is recommended prior to use. [More info](#)

**OTI Annotation:** This clone was engineered to express the complete ORF with an expression tag. Expression varies depending on the nature of the gene.

**Components:** The ORF clone is ion-exchange column purified and shipped in a 2D barcoded Matrix tube containing 10ug of transfection-ready, dried plasmid DNA (reconstitute with 100 ul of water).

- Reconstitution Method:**
1. Centrifuge at 5,000xg for 5min.
  2. Carefully open the tube and add 100ul of sterile water to dissolve the DNA.
  3. Close the tube and incubate for 10 minutes at room temperature.
  4. Briefly vortex the tube and then do a quick spin (less than 5000xg) to concentrate the liquid at the bottom.
  5. Store the suspended plasmid at -20°C. The DNA is stable for at least one year from date of shipping when stored at -20°C.

**Note:** Plasmids are not sterile. For experiments where strict sterility is required, filtration with 0.22um filter is required.

**RefSeq:** [NM\\_003879.7](#)

**RefSeq Size:** 10640 bp

**RefSeq ORF:** 1443 bp

**Locus ID:** 8837

**UniProt ID:** [O15519](#)

**Cytogenetics:** 2q33.1

**Domains:** DED, CASc, ICE\_p20

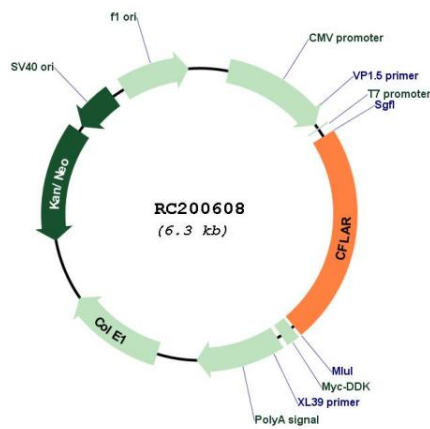
**Protein Families:** Druggable Genome, Protease

**Protein Pathways:** Apoptosis

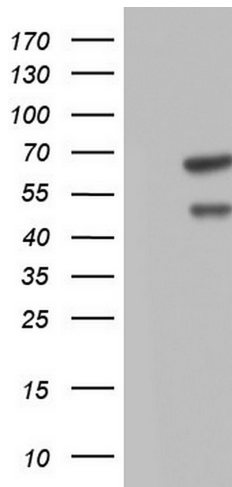
**MW:** 55.3 kDa

**Gene Summary:** The protein encoded by this gene is a regulator of apoptosis and is structurally similar to caspase-8. However, the encoded protein lacks caspase activity and appears to be itself cleaved into two peptides by caspase-8. Several transcript variants encoding different isoforms have been found for this gene, and partial evidence for several more variants exists. [provided by RefSeq, Feb 2011]

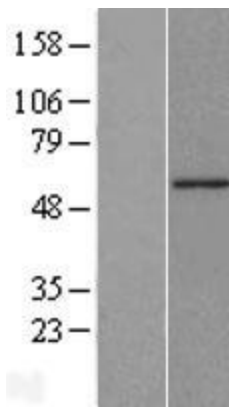
**Product images:**



Circular map for RC200608



HEK293T cells were transfected with the pCMV6-ENTRY control (Cat# [PS100001], Left lane) or pCMV6-ENTRY CFLAR (Cat# RC200608, Right lane) cDNA for 48 hrs and lysed. Equivalent amounts of cell lysates (5 ug per lane) were separated by SDS-PAGE and immunoblotted with anti-CFLAR antibody (Cat# [TA804581]). Positive lysates [LY418376] (100ug) and [LC418376] (20ug) can be purchased separately from OriGene.



Western blot validation of overexpression lysate (Cat# [LY426693]) using anti-DDK antibody (Cat# [TA50011-100]). Left: Cell lysates from untransfected HEK293T cells; Right: Cell lysates from HEK293T cells transfected with [RC225816] using transfection reagent MegaTran 2.0 (Cat# [TT210002]).