

Product datasheet for **RC200600**

VGLL1 (NM_016267) Human Tagged ORF Clone

Product data:

Product Type:	Expression Plasmids
Product Name:	VGLL1 (NM_016267) Human Tagged ORF Clone
Tag:	Myc-DDK
Symbol:	VGLL1
Synonyms:	TDU; VGL1
Mammalian Cell Selection:	Neomycin
Vector:	pCMV6-Entry (PS100001)
E. coli Selection:	Kanamycin (25 ug/mL)
ORF Nucleotide Sequence:	>RC200600 ORF sequence Red=Cloning site Blue=ORF Green=Tags(s)

TTTTGTAATACGACTCACTATAGGGCGGCCGGAATTCGTCGACTGGATCCGGTACCGAGGAGATCTGCC
GCC**CGATCGCC**

ATGGAAGAAATGAAGAAGACTGCCATCCGGCTGCCAAAGGCAAACAGAAGCCTATAAAGACGGAATGGA
ATTCCCGGTGTGCCTTTTCACCTACTTCCAAGGGGACATCAGCAGCGTAGTGGATGAACACTTCTCCAG
AGCTCTGAGCAATATCAAGAGCCCCAGGAATTGACCCCTCGAGTCAGAGTGAAGGTGTGATGCTGAAA
AACGATGATAGCATGTCTCCAAATCAGTGGCGTTACTCGTCTCCATGGACAAAGCCACAACCAGAAGTAC
CTGTACAAAACCGTGCCCAACTGCAACTTGCATGTGCCTGGTCCCATGGCTGTGAATCAGTTCTCACC
GTCCCTGGCTAGGAGGGCTCTGTTCCGGCTGGGAGCTGTGGCATTCTCCTCCCTGGCGGCACCAGC
TCCTTAGAGCCTGGCTACTCTCATCCCTTCCCCGCTCGGCACCTGGTTCAGAGCCCAGCTGATGGGA
AACGTGAGCCTCTCCTAAGTCTCCTCCAGCAAGACAGATGCCTAGCCCGTCTCAGGAATCTGCCCCAG
GGAGAAATGGCAACCCTGGCCAGATAGCTGGAAGCACAGGGTTGCTCTTCAACCTGCCTCCCGGCTCAGTT
CACTATAAGAACTATATGTATCTCGTGGATCTGCCAGTACCAGCCTTCCAAATGAAACTTTTCAGAGT
TAGAGACACCTGGGAAATACTCACTTACACCACCAACCCTGGGGCCACCCACATCGATACCTGCAGCA
TCTT

ACGCGTACGCGGCCGCTCGAGCAGAAACTCATCTCAGAAGAGGATCTGGCAGCAAATGATATCCTGGATT
ACAAGGATGACGACGATAAGGTTTAA



Protein Sequence: >RC200600 protein sequence
 Red=Cloning site Green=Tags(s)

MEEMKKAIRLPKGKQPKIKTEWNSRCVLFTYFQGDISSVVDEHFSRALSNIKSPQELTPSSQSEGVMK
 NDDSMSPNQWRYSSPWTKPQPEVPTNRAANCNLHVPGPMAVNQFSPSLARRASVRPGLWHFSSLAGTS
 SLEPGYSHPPARHLVPEPQPDGKREPLL SLLQQDRCLARPQESAARENGNPGQIAGSTGLLFLNPPGSV
 HYKKLYVSRGSASTSLPNETLSELETPGKYSLT PPNHWGHPHYRLQHL

TRTRPLEQKLISEEDLAANDILDYKDDDDKV

Chromatograms: https://cdn.origene.com/chromatograms/mk6392_d10.zip

Restriction Sites: SgfI-MluI

Cloning Scheme:

Cloning sites used for ORF Shuttling:



* The last codon before the Stop codon of the ORF

ACCN: NM_016267

ORF Size: 774 bp

OTI Disclaimer: The molecular sequence of this clone aligns with the gene accession number as a point of reference only. However, individual transcript sequences of the same gene can differ through naturally occurring variations (e.g. polymorphisms), each with its own valid existence. This clone is substantially in agreement with the reference, but a complete review of all prevailing variants is recommended prior to use. [More info](#)

OTI Annotation: This clone was engineered to express the complete ORF with an expression tag. Expression varies depending on the nature of the gene.

Components: The ORF clone is ion-exchange column purified and shipped in a 2D barcoded Matrix tube containing 10ug of transfection-ready, dried plasmid DNA (reconstitute with 100 ul of water).

Reconstitution Method:

1. Centrifuge at 5,000xg for 5min.
2. Carefully open the tube and add 100ul of sterile water to dissolve the DNA.
3. Close the tube and incubate for 10 minutes at room temperature.
4. Briefly vortex the tube and then do a quick spin (less than 5000xg) to concentrate the liquid at the bottom.
5. Store the suspended plasmid at -20°C. The DNA is stable for at least one year from date of shipping when stored at -20°C.

RefSeq: [NM_016267.4](#)

RefSeq Size: 1242 bp

RefSeq ORF: 777 bp

Locus ID: 51442

UniProt ID: [Q99990](#)

Cytogenetics: Xq26.3

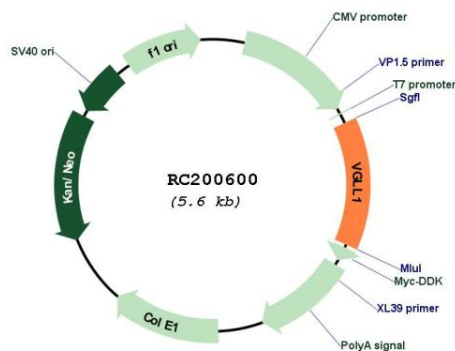
Domains: TDU

Protein Families: Transcription Factors

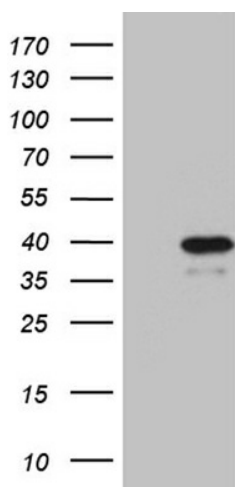
MW: 28.7 kDa

Gene Summary: The protein encoded by this gene binds proteins of the TEA domain family of transcription factors (TEFs) through the Vg (vestigial) homology region found in its N-terminus. It may thus function as a specific coactivator for the mammalian TEFs. [provided by RefSeq, Sep 2009]

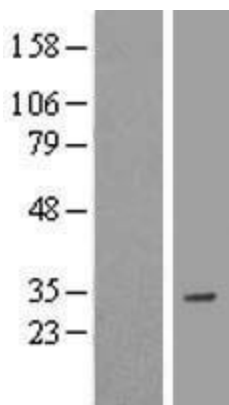
Product images:



Circular map for RC200600



HEK293T cells were transfected with the pCMV6-ENTRY control (Cat# [PS100001], Left lane) or pCMV6-ENTRY VGLL1 (Cat# RC200600, Right lane) cDNA for 48 hrs and lysed. Equivalent amounts of cell lysates (5 ug per lane) were separated by SDS-PAGE and immunoblotted with anti-VGLL1 (Cat# [TA810655])(1:2000). Positive lysates [LY414087] (100ug) and [LC414087] (20ug) can be purchased separately from OriGene.



Western blot validation of overexpression lysate (Cat# [LY414087]) using anti-DDK antibody (Cat# [TA50011-100]). Left: Cell lysates from untransfected HEK293T cells; Right: Cell lysates from HEK293T cells transfected with RC200600 using transfection reagent MegaTran 2.0 (Cat# [TT210002]).