

Product datasheet for RC200595L4

RNase H1 (RNASEH1) (NM_002936) Human Tagged Lenti ORF Clone

Product data:

Product Type:	Expression Plasmids
Product Name:	RNase H1 (RNASEH1) (NM_002936) Human Tagged Lenti ORF Clone
Tag:	mGFP
Symbol:	RNase H1
Synonyms:	H1RNA; PEOB2; RNH1
Mammalian Cell Selection:	Puromycin
Vector:	pLenti-C-mGFP-P2A-Puro (PS100093)
E. coli Selection:	Chloramphenicol (34 ug/mL)
ORF Nucleotide Sequence:	The ORF insert of this clone is exactly the same as(RC200595).
Restriction Sites:	SgfI-MluI
Cloning Scheme:	

Cloning sites used for ORF Shuttling:



* The last codon before the Stop codon of the ORF.

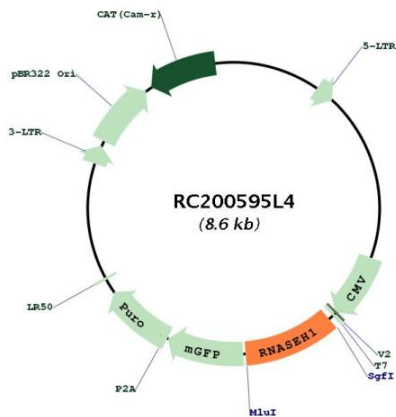
ACCN:	NM_002936
ORF Size:	858 bp



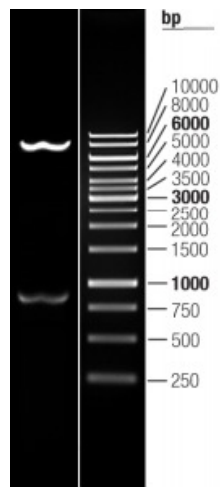
[View online »](#)

OTI Disclaimer:	The molecular sequence of this clone aligns with the gene accession number as a point of reference only. However, individual transcript sequences of the same gene can differ through naturally occurring variations (e.g. polymorphisms), each with its own valid existence. This clone is substantially in agreement with the reference, but a complete review of all prevailing variants is recommended prior to use. More info
OTI Annotation:	This clone was engineered to express the complete ORF with an expression tag. Expression varies depending on the nature of the gene.
Components:	The ORF clone is ion-exchange column purified and shipped in a 2D barcoded Matrix tube containing 10ug of transfection-ready, dried plasmid DNA (reconstitute with 100 ul of water).
Reconstitution Method:	<ol style="list-style-type: none">1. Centrifuge at 5,000xg for 5min.2. Carefully open the tube and add 100ul of sterile water to dissolve the DNA.3. Close the tube and incubate for 10 minutes at room temperature.4. Briefly vortex the tube and then do a quick spin (less than 5000xg) to concentrate the liquid at the bottom.5. Store the suspended plasmid at -20°C. The DNA is stable for at least one year from date of shipping when stored at -20°C.
RefSeq:	NM_002936.3
RefSeq Size:	1865 bp
RefSeq ORF:	861 bp
Locus ID:	246243
UniProt ID:	O60930
Cytogenetics:	2p25.3
Domains:	rnaseH
Protein Pathways:	DNA replication
MW:	32.1 kDa
Gene Summary:	This gene encodes an endonuclease that specifically degrades the RNA of RNA-DNA hybrids and plays a key role in DNA replication and repair. Alternate in-frame start codon initiation results in the production of alternate isoforms that are directed to the mitochondria or to the nucleus. The production of the mitochondrial isoform is modulated by an upstream open reading frame (uORF). Mutations in this gene have been found in individuals with progressive external ophthalmoplegia with mitochondrial DNA deletions, autosomal recessive 2. Alternative splicing results in additional coding and non-coding transcript variants. Pseudogenes of this gene have been defined on chromosomes 2 and 17. [provided by RefSeq, Jul 2017]

Product images:



Circular map for RC200595L4



Double digestion of RC200595L4 using SgfI and MluI