

Product datasheet for RC200586

FSTL1 (NM_007085) Human Tagged ORF Clone

Product data:

Product Type:	Expression Plasmids
Product Name:	FSTL1 (NM_007085) Human Tagged ORF Clone
Tag:	Myc-DDK
Symbol:	FSTL1
Synonyms:	FRP; FSL1; MIR198; OCC-1; OCC1; tsc36
Mammalian Cell Selection:	Neomycin
Vector:	pCMV6-Entry (PS100001)
E. coli Selection:	Kanamycin (25 ug/mL)
ORF Nucleotide Sequence:	>RC200586 ORF sequence Red=Cloning site Blue=ORF Green=Tags(s)

TTTTGTAATACGACTCACTATAGGGCGGCCGGAATTCGTCGACTGGATCCGGTACCGAGGAGATCTGCC
GCC**CGATCGCC**

ATGTGAAACGCTGGCTCGCGCTCGCGCTCGCGCTGGTGGCGGTCGCCTGGGTCCGCGCCGAGGAAGAGC
TAAGGAGCAAATCCAAGATCTGTGCAATGTGTTTTGTGGAGCCGCCGGAATGTGCAGTCACAGAGAA
AGGGGAACCCACCTGTCTCTGCATTGAGCAATGCAAACCTCACAAGAGGCCTGTGTGGCAGTAATGCC
AAGACCTACCTCAACCACTGTGAACTGCATCGAGATGCCTGCCTCACTGGATCCAAAATCCAGTTGATT
ACGATGGACACTGCAAAGAGAAGAAATCCGTAAGTCCATCTGCCAGCCAGTTGTTGCTATCAGTCCAA
CCGTGATGAGCTCCGACGTCGCATCAGTGGCTGGAAGCTGAGATCATTCCAGATGGCTGGTTCTCT
AAAGGCAGCAACTACAGTGAAATCCTAGACAAGTATTTAAGAACTTTGATAATGGTGATTCTCGCCTGG
ACTCCAGTGAATTCCTGAAGTTTGTGGAACAGAAATGAAACTGCCATCAATATTACAACGTATCCAGACCA
GGAGAACAACAAGTTGCTTAGGGGACTCTGTGTTGATGCTCTCATTGAACTGTCTGATGAAAATGCTGAT
TGGAAACTCAGCTTCCAAGAGTTTCTCAAGTGCCTCAACCCATCTTTCAACCTCCTGAGAAGAAGTGTG
CCCTGGAGGATGAAACGTATGCAGATGGAGCTGAGACCGAGGTGGACTGTAACCGCTGTGTCTGTGCCTG
TGGAAATTGGTCTGTACAGCCATGACCTGTGACGGAAAGAATCAGAAGGGGGCCAGACCCAGACAGAG
GAGGAGATGACCAGATATGTCCAGGAGCTCCAAAAGCATCAGAAACAGCTGAAAAGACCAAGAGAGTGA
GCACCAAAGAGATC

ACGCGTACGCGGCCGCTCGAGCAGAAACTCATCTCAGAAGAGGATCTGGCAGCAAATGATATCCTGGATT
ACAAGGATGACGACGATAAGGTTTAA



[View online »](#)

Protein Sequence: >RC200586 protein sequence
Red=Cloning site Green=Tags(s)

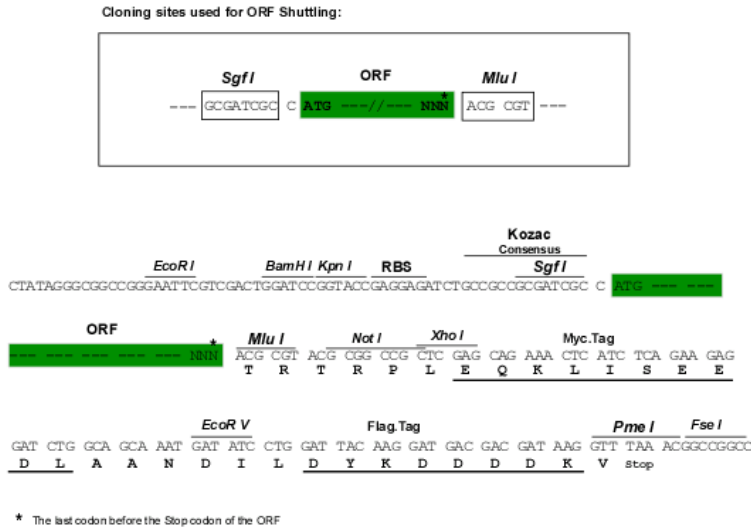
MWKRWLALALAVAVAVRAEEELRSKSKICANVFCGAGRECAVTEKGEPTCLCIEQCKPHKRPVCGSNG
 KTYLNHCELHRDACLTGSKIQVDYDGHCKEKKSVSPSPVVCYQSNRDELRRRIIQWLEAEIIPDGWFS
 KGSNYSEILDKYFKNFDNGDSRLDSSEFLKFVEQNETAINITTPDQENKLLRGLCVDALIELSDENAD
 WKLSFQEFCLKLNPSFNPPPEKKCALEDETYADGAETEVDNRCVCACGNWVCTAMTCDGKNQKGAQTQTE
 EEMTRYVQELQKHQETAEKTRVSTKEI

TRTRPLEQKLISEEDLAANDILDYKDDDDKV

Chromatograms: https://cdn.origene.com/chromatograms/mk6193_b04.zip

Restriction Sites: SgfI-MluI

Cloning Scheme:



ACCN: NM_007085

ORF Size: 924 bp

OTI Disclaimer: The molecular sequence of this clone aligns with the gene accession number as a point of reference only. However, individual transcript sequences of the same gene can differ through naturally occurring variations (e.g. polymorphisms), each with its own valid existence. This clone is substantially in agreement with the reference, but a complete review of all prevailing variants is recommended prior to use. [More info](#)

OTI Annotation: This clone was engineered to express the complete ORF with an expression tag. Expression varies depending on the nature of the gene.

Components: The ORF clone is ion-exchange column purified and shipped in a 2D barcoded Matrix tube containing 10ug of transfection-ready, dried plasmid DNA (reconstitute with 100 ul of water).

Reconstitution Method:

1. Centrifuge at 5,000xg for 5min.
2. Carefully open the tube and add 100ul of sterile water to dissolve the DNA.
3. Close the tube and incubate for 10 minutes at room temperature.
4. Briefly vortex the tube and then do a quick spin (less than 5000xg) to concentrate the liquid at the bottom.
5. Store the suspended plasmid at -20°C. The DNA is stable for at least one year from date of shipping when stored at -20°C.

Note: Plasmids are not sterile. For experiments where strict sterility is required, filtration with 0.22um filter is required.

RefSeq: [NM_007085.5](#)

RefSeq Size: 3840 bp

RefSeq ORF: 927 bp

Locus ID: 11167

UniProt ID: [Q12841](#)

Cytogenetics: 3q13.33

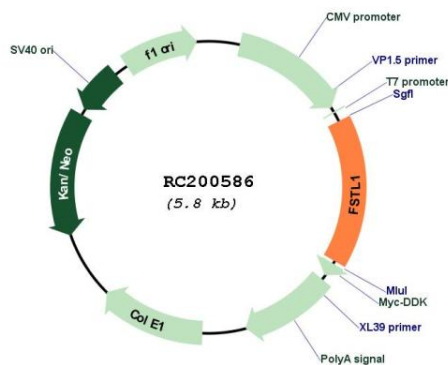
Domains: EFh, kazal, FOLN

Protein Families: Secreted Protein

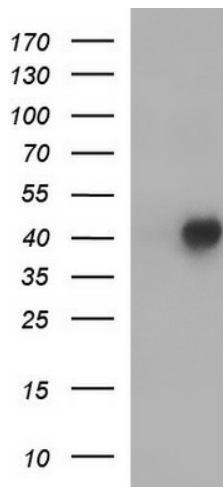
MW: 35 kDa

Gene Summary: This gene encodes a protein with similarity to follistatin, an activin-binding protein. It contains an FS module, a follistatin-like sequence containing 10 conserved cysteine residues. This gene product is thought to be an autoantigen associated with rheumatoid arthritis. [provided by RefSeq, Jul 2008]

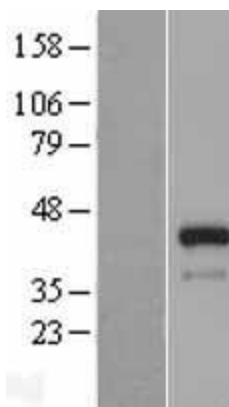
Product images:



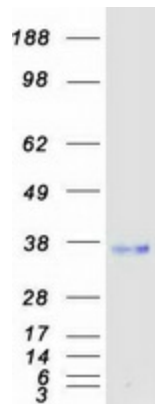
Circular map for RC200586



HEK293T cells were transfected with the pCMV6-ENTRY control (Cat# [PS100001], Left lane) or pCMV6-ENTRY FSTL1 (Cat# RC200586, Right lane) cDNA for 48 hrs and lysed. Equivalent amounts of cell lysates (5 ug per lane) were separated by SDS-PAGE and immunoblotted with anti-FSTL1 (Cat# [TA590234]). Positive lysates [LY402088] (100ug) and [LC402088] (20ug) can be purchased separately from OriGene.



Western blot validation of overexpression lysate (Cat# [LY402088]) using anti-DDK antibody (Cat# [TA50011-100]). Left: Cell lysates from untransfected HEK293T cells; Right: Cell lysates from HEK293T cells transfected with RC200586 using transfection reagent MegaTran 2.0 (Cat# [TT210002]).



Coomassie blue staining of purified FSTL1 protein (Cat# [TP300586]). The protein was produced from HEK293T cells transfected with FSTL1 cDNA clone (Cat# RC200586) using MegaTran 2.0 (Cat# [TT210002]).