

Product datasheet for RC200583

ID3 (NM_002167) Human Tagged ORF Clone

Product data:

Product Type: Expression Plasmids
Product Name: ID3 (NM_002167) Human Tagged ORF Clone
Tag: Myc-DDK
Symbol: ID3
Synonyms: bHLHb25; HEIR-1
Mammalian Cell Selection: Neomycin
Vector: pCMV6-Entry (PS100001)
E. coli Selection: Kanamycin (25 ug/mL)
ORF Nucleotide Sequence: >RC200583 ORF sequence
 Red=Cloning site Blue=ORF Green=Tags(s)

TTTTGTAATACGACTCACTATAGGGCGGCCGGAATTCGTCGACTGGATCCGGTACCGAGGAGATCTGCC
 GCC**CGATCGCC**

ATGAAGGCGCTGAGCCCGGTGCGCGGCTGCTACGAGGCGGTGTGCTGCCTGTCCGAAACGCAGTCTGGCCA
 TCGCCCGGGCCGAGGGAAGGGCCCGCAGCTGAGGAGCCGCTGAGCTTGTGGACGACATGAACCACTG
 CTACTCCCGCTGCGGAACTGGTACCCGGAGTCCCGAGAGGCACTCAGCTTAGCCAGGTGAAATCCTA
 CAGCGCGTCATCGACTACATTCTCGACCTGCAGGTAGTCTGGCCGAGCCAGCCCTGGACCCCTGATG
 GCCCCACCTTCCATCCAGACAGCCGAGCTCGCTCCGGAATTGTCATCTCCAACGACAAAAGGAGCTT
 TTGCCAC

ACGCGTACGCGGCCGCTCGAGCAGAAACTCATCTCAGAAGAGGATCTGGCAGCAAATGATATCCTGGATT
 ACAAGGATGACGACGATAAGGTTTAA

Protein Sequence: >RC200583 protein sequence
 Red=Cloning site Green=Tags(s)

MKALSPVRGCYEAVCCLSERSLAIARGRGKPAEEPLSLDDMNHCSRLRELVPVPRGTQLSQVEIL
 QRVIDYILDQLVLAEPAPGPPDPHPLPIQTAELAPELVISNDKRSFCH

TRTRPLEQKLISEEDLAANDILDYKDDDDKV

Chromatograms: https://cdn.origene.com/chromatograms/mk6082_b01.zip

Restriction Sites: SgfI-MluI



[View online »](#)

Cloning Scheme:

ACCN: NM_002167

ORF Size: 357 bp

OTI Disclaimer: Due to the inherent nature of this plasmid, standard methods to replicate additional amounts of DNA in E. coli are highly likely to result in mutations and/or rearrangements. Therefore, OriGene does not guarantee the capability to replicate this plasmid DNA. Additional amounts of DNA can be purchased from OriGene with batch-specific, full-sequence verification at a reduced cost. Please contact our customer care team at custsupport@origene.com or by calling 301.340.3188 option 3 for pricing and delivery.

The molecular sequence of this clone aligns with the gene accession number as a point of reference only. However, individual transcript sequences of the same gene can differ through naturally occurring variations (e.g. polymorphisms), each with its own valid existence. This clone is substantially in agreement with the reference, but a complete review of all prevailing variants is recommended prior to use. [More info](#)

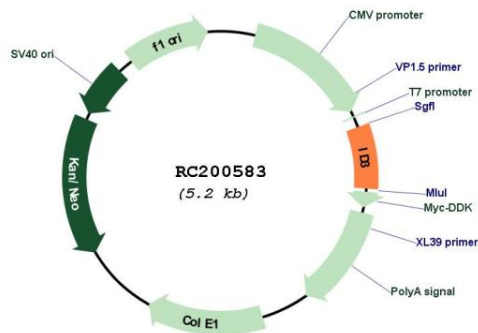
OTI Annotation: This clone was engineered to express the complete ORF with an expression tag. Expression varies depending on the nature of the gene.

Components: The ORF clone is ion-exchange column purified and shipped in a 2D barcoded Matrix tube containing 10ug of transfection-ready, dried plasmid DNA (reconstitute with 100 ul of water).

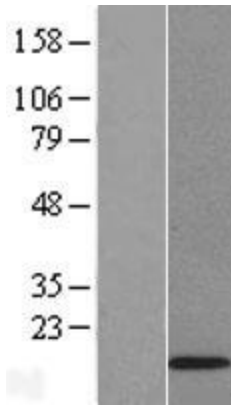
- Reconstitution Method:**
1. Centrifuge at 5,000xg for 5min.
 2. Carefully open the tube and add 100ul of sterile water to dissolve the DNA.
 3. Close the tube and incubate for 10 minutes at room temperature.
 4. Briefly vortex the tube and then do a quick spin (less than 5000xg) to concentrate the liquid at the bottom.
 5. Store the suspended plasmid at -20°C. The DNA is stable for at least one year from date of shipping when stored at -20°C.

Note:	Plasmids are not sterile. For experiments where strict sterility is required, filtration with 0.22um filter is required.
RefSeq:	<u>NM_002167.2</u> , <u>NP_002158.2</u>
RefSeq Size:	1252 bp
RefSeq ORF:	360 bp
Locus ID:	3399
UniProt ID:	<u>Q02535</u>
Cytogenetics:	1p36.12
Protein Families:	Druggable Genome, ES Cell Differentiation/IPS, Transcription Factors
Protein Pathways:	TGF-beta signaling pathway
MW:	13 kDa
Gene Summary:	The protein encoded by this gene is a helix-loop-helix (HLH) protein that can form heterodimers with other HLH proteins. However, the encoded protein lacks a basic DNA-binding domain and therefore inhibits the DNA binding of any HLH protein with which it interacts. [provided by RefSeq, Aug 2011]

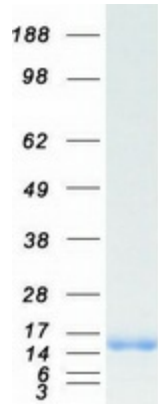
Product images:



Circular map for RC200583



Western blot validation of overexpression lysate (Cat# [LY419492]) using anti-DDK antibody (Cat# [TA50011-100]). Left: Cell lysates from untransfected HEK293T cells; Right: Cell lysates from HEK293T cells transfected with RC200583 using transfection reagent MegaTran 2.0 (Cat# [TT210002]).



Coomassie blue staining of purified ID3 protein (Cat# [TP300583]). The protein was produced from HEK293T cells transfected with ID3 cDNA clone (Cat# RC200583) using MegaTran 2.0 (Cat# [TT210002]).