

Product datasheet for **RC200582**

RPP20 (POP7) (NM_005837) Human Tagged ORF Clone

Product data:

Product Type: Expression Plasmids
Product Name: RPP20 (POP7) (NM_005837) Human Tagged ORF Clone
Tag: Myc-DDK
Symbol: RPP20
Synonyms: 0610037N12Rik; RPP2; RPP20
Mammalian Cell Selection: Neomycin
Vector: pCMV6-Entry (PS100001)
E. coli Selection: Kanamycin (25 ug/mL)
ORF Nucleotide Sequence: >RC200582 ORF sequence
 Red=Cloning site Blue=ORF Green=Tags(s)

TTTTGTAATACGACTCACTATAGGGCGCCGGGAATTCGTCGACTGGATCCGGTACCGAGGAGATCTGCC
 GCC**CGATCGCC**

ATGGCAGAAAACCGAGAGCCCCGCGGTGCTGTGGAGGCTGAAGTGGATCCAGTGAATACACCCTTAGGA
AAAGGCTTCCCAGCCGCTGCCCGGAGACCCAATGACATTTATGTCAACATGAAGACGGACTTTAAGGC
CCAGCTGGCCCGCTGCCAGAAGCTGCTGGACGGAGGGCCGGGGTCAAGACGCGTCTCTGAGATCTAC
ATTCACGGCTTGGCCTGGCCATCAACCGCCATCAACATCGCGCTGCAGCTGCAGCGGGCAGCTTCG
GGTCCTTGCAGGTGGCTGCCAATACCTCCACCGTGGAGCTTGTGATGAGCTGGAGCCAGAGACCGACAC
ACGGGAGCCACTGACTCGGATCCGCAACAACCTAGCCATCCACATCCGAGTCTTCAGGGTCACACCCAAG

AGCGGACCGACGCGTACGCGCCGCTCGAGCAGAACTCATCTCAGAAGAGGATCTGGCAGCAAATGATATCC
TGGATTACAAGGATGACGACGATAAGGTTTAA

Protein Sequence: >RC200582 protein sequence
 Red=Cloning site Green=Tags(s)

MAENREPRGAVEAELDPVEYTLRKRLPSRLPRRPNDIYVNMKTDFKAQLARCQKLLDGGARGQNACSEIY
 IHGLGLAINRAINIALQLQAGSFGSLQVAANTSTVELVDELEPETDTREPLTRIRNNSAIHIRVFRVTPK

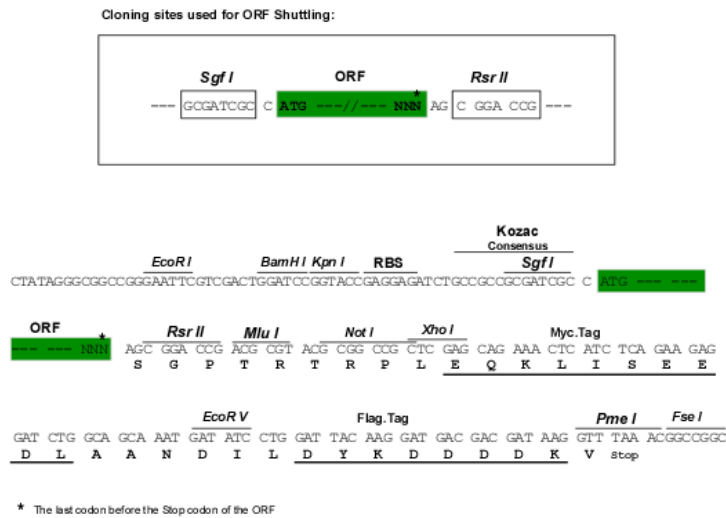
SGPTRTRPLEQKLISEEDLAANDILDYKDDDDKV

Chromatograms: https://cdn.origene.com/chromatograms/mk6221_c01.zip

Restriction Sites: SgfI-RsrII



[View online »](#)

Cloning Scheme:


ACCN: NM_005837

ORF Size: 420 bp

OTI Disclaimer: The molecular sequence of this clone aligns with the gene accession number as a point of reference only. However, individual transcript sequences of the same gene can differ through naturally occurring variations (e.g. polymorphisms), each with its own valid existence. This clone is substantially in agreement with the reference, but a complete review of all prevailing variants is recommended prior to use. [More info](#)

OTI Annotation: This clone was engineered to express the complete ORF with an expression tag. Expression varies depending on the nature of the gene.

Components: The ORF clone is ion-exchange column purified and shipped in a 2D barcoded Matrix tube containing 10ug of transfection-ready, dried plasmid DNA (reconstitute with 100 ul of water).

Reconstitution Method:

1. Centrifuge at 5,000xg for 5min.
2. Carefully open the tube and add 100ul of sterile water to dissolve the DNA.
3. Close the tube and incubate for 10 minutes at room temperature.
4. Briefly vortex the tube and then do a quick spin (less than 5000xg) to concentrate the liquid at the bottom.
5. Store the suspended plasmid at -20°C. The DNA is stable for at least one year from date of shipping when stored at -20°C.

RefSeq: [NM_005837.3](#)

RefSeq Size: 949 bp

RefSeq ORF: 423 bp

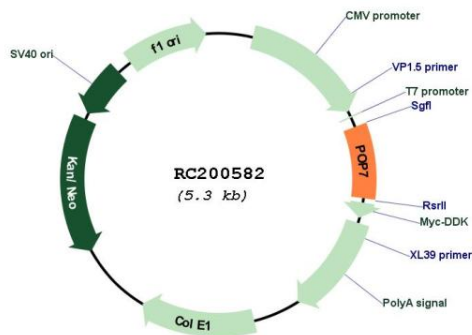
Locus ID: 10248

UniProt ID: [O75817](#)

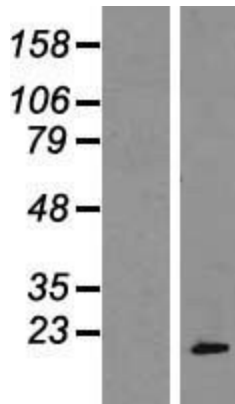
Cytogenetics: 7q22.1
Protein Families: Stem cell - Pluripotency
MW: 15.7 kDa

Gene Summary: Component of ribonuclease P, a ribonucleoprotein complex that generates mature tRNA molecules by cleaving their 5'-ends (PubMed:9630247, PubMed:30454648). Also a component of the MRP ribonuclease complex, which cleaves pre-rRNA sequences (PubMed:28115465). [UniProtKB/Swiss-Prot Function]

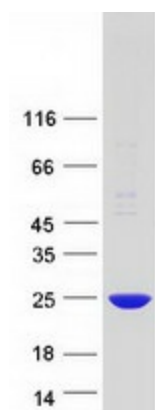
Product images:



Circular map for RC200582



Western blot validation of overexpression lysate (Cat# [LY417024]) using anti-DDK antibody (Cat# [TA50011-100]). Left: Cell lysates from untransfected HEK293T cells; Right: Cell lysates from HEK293T cells transfected with RC200582 using transfection reagent MegaTran 2.0 (Cat# [TT210002]).



Coomassie blue staining of purified POP7 protein (Cat# [TP300582]). The protein was produced from HEK293T cells transfected with POP7 cDNA clone (Cat# RC200582) using MegaTran 2.0 (Cat# [TT210002]).