

Product datasheet for **RC200581**

GADD34 (PPP1R15A) (NM_014330) Human Tagged ORF Clone

Product data:

Product Type:	Expression Plasmids
Product Name:	GADD34 (PPP1R15A) (NM_014330) Human Tagged ORF Clone
Tag:	Myc-DDK
Symbol:	GADD34
Synonyms:	GADD34
Mammalian Cell Selection:	Neomycin
Vector:	pCMV6-Entry (PS100001)
E. coli Selection:	Kanamycin (25 ug/mL)



[View online »](#)

**ORF Nucleotide
Sequence:**

>RC200581 ORF sequence
 Red=Cloning site Blue=ORF Green=Tags(s)

TTTTGTAATACGACTCACTATAGGGCGGCCGGAATTCGTCGACTGGATCCGGTACCGAGGAGATCTGCC
 GCC**CGGATCGCC**

ATGGCCCCAGGCCAAGCACCCCATCAGGCTACCCCGTGGAGGGATGCCACCCTTCTTCTCCTGTCCC
 CAGTGATGGGCCCTCTCAGCCGCGCCTGGAGCCGCTGAGGGGCTGGGACCTCTAGAGCCCTGGCTGGT
 GGAAGCAGTAAAAGGAGCAGCTCTGGTAGAAGCTGGCCTGGAGGGAGAAGCTAGGACTCCTCTGGCAATC
 CCCCATACCCCTTGGGGCAGACGCCCTGAAGAGGAGGCTGAAGACAGTGGAGGCCCTGGAGAGGACAGAG
 AAACACTGGGGCTGAAAACCAGCAGTTCCTTCTGAAGCCTGGGGACTTTGGATGATGATGATGGCAT
 GTATGGTGAAGGAGGCAACCAGTGTCCCTAGAGGGCAGGGAAGTCAATTTGCAGATGGCCAGCGTGCT
 CCCCTGTCTCCAGCCTTCTGATAAGGACTGCAAGTTCTGATAAGAACCAGGGGAGGAGAAAGCCG
 AGGAAGAGGGAGTTGCTGAAGAGGAGGGAGTTAACAAGTTCTTATCCACCATCACACCGGAGTGTG
 TCCAGCCGTGGAGGAGGAGCAGTGAAGAAGCTGTAAGAAAGAAGCTCACAGAACCTCTACTTCTGCC
 TTGTCTCCAGGATCCAAGCCAGCACTTGGGTGTCTTGCCAGGGGAGGAAGAGAATCAAGCCACCGAGG
 ATAAAAGAACAGAAAGAAGTAAAGGAGCCAGGAAGACCTCCGTGTCCCCCGATCTTCAGGCTCCGACCC
 CAGGTCCTGGGAGTATCGTTTCAAGAGAGGCGTCCGAGGAGAAGGAGGAAAAGGCACACAAAGAACTGGG
 AAAGGAGAAGCTGCCCCAGGGCCGAATCTCAGCCCCAGCCAGAGGCCCCAGCTCAAGTCCTGGTGGT
 GCCAACCCAGTGATGAAGAGGAGGGTGAAGTCAAGGCTTGGGGGAGCTGAGAAGGATGGAGAAGCTGA
 GTGTCTCCCTGCATCCCCACCAAGTGCCTTCTGAAGCCTGGGTGTATTGGCCAGGAGAGGACACA
 GAGGAAGAGGAAGATGAGGAAGAAGATGAGGACAGTACTCTGGATCAGATGAGGAAGAGGGAGAAGCTG
 AGGCTTCTCTTCCACTCCTGCTACAGGTGTCTTCTTGAAGTCTGGGTCTATCAGCCAGGAGAGGACAC
 AGAGGAGGAGGAAGATGAGGACAGTGTACAGGATCAGCCGAGGATGAAAGAGAAGCTGAGACTTCTGCT
 TCCACACCCCTGCAAGTGTCTTCTTGAAGCCTGGGTGTATCGGCCAGGAGAGGACACGGAGGAGGAGG
 AAGATGAGGATGTGGATAGTGAGGATAAGGAAGATGATTCAGAAGCAGCCTTGGGAGAAGCTGAGTCAGA
 CCCACATCCCTCCACCCGACCAGAGGGCCACTTCAGGGGCTGGGATATCGACCTGGAAAAGAGACA
 GAGGAAGAGGAAGCTGCTGAGGACTGGGAGAAGCTGAGCCCTGCCCTTCCGAGTGGCCATCTATGTAC
 CTGGAGAGAAGCCACCGCCTCCCTGGGCTCCTCCTAGGCTGCCCTCCGACTGCAAAGGCGGCTCAAGCG
 CCCAGAAACCCCTACTCATGATCCGGACCCTGAGACTCCCCTAAAGGCCAGAAAGGTGCGCTTCTCCGAG
 AAGGTCACTGTCCATTTCTGGCTGTCTGGCAGGGCCGCCCAGGCCGCCAGGGCCCTGGGAGC
 AGCTTGCTCGGGATCGCAGCCGCTTCGCACGCCGATCACCCAGGCCAGGAGGAGCTGAGCCCCTGCCT
 CACCCCTGCTGCCCGGGCCAGAGCCTGGGCACGCCTCAGGAACCCACCTTATGCCCCATCCCTGCCCTC
 ACCCAGACCTTGCCCTTCTCCTCTGTCCCTTCGCCCCAGTCCAGACCACGCCCTTGAGCCAAGCTGTGG
 CCACACCTTCCGCTCGTCTGCTGCTGCAGCGGCTGCCCTGGACCTCAGTGGGAGGCGTGGC

ACGCGTACGCGGGCCGCTCGAGCAGAACTCATCTCAGAAGAGGATCTGGCAGCAATGATATCCTGGATT
 ACAAGGATGACGACGATAAGGTTTAA

Protein Sequence: >RC200581 protein sequence
Red=Cloning site Green=Tags(s)

MAPGQAPHQATPWRDAHPPFLLSPVMGLLSRAWSRLRGLGPLEPWLVEAVKGAALVEAGLEGEARTPLAI
 PHTPWGRRPEEEAEDSGPGEDRETLGLKTSSSLPEAWGLLDDDDGMYGEREATSVPRGQGSQFADGQRA
 PLSPLLLIRTLQGSCKNPGEEKAEIEEGVAIEEGVNKFSYPPSHRECCPAVEEEDDEEAVKKEAHRSTSA
 LSPGSKPSTWVSCPGEENQATEDKRTERSCKGARKTSVSPRSSGSDPRSWEYRSGEASEEKEEKAHKETG
 KGEAAPGPQSSAPAQRPLKSWWCQPSDEEEGEVKALGAAEKDGEAECPPCIPPPSAFLKAWVYWPGEDT
 EEEEEDEEDEDSDSGSDEEEGEAEASSSTPATGVFLKSWYQPGEDTEEEDESDTGSADEREAE TSA
 STPPASAFKAWVYRPGEDTEEEDEDVDESKEDDSEALGAE SDPHSPDQRAHFRGWYRPGKET
 EEEEEAEWDGAEPCPFVAVIYVPGKPPPPWAPPRLPLRLQRRLKRPETPHDPPETPLKARKVRFSE
 KVTVHFLAVWAGPAQAARQGPWEQLARDRSRFAARRITQAQEELSPCLTPAARARAWARLRNPLAPIPAL
 TQTLPSSSPVQTTPLSQAVATPSRSSAAAAAALDLSGRRG

TRTRPLEQKLISEEDLAANDILDYKDDDDKV

Chromatograms: https://cdn.origene.com/chromatograms/mk6209_f05.zip

Restriction Sites: SgfI-MluI

Cloning Scheme:



ACCN: NM_014330

ORF Size: 2022 bp

OTI Disclaimer: The molecular sequence of this clone aligns with the gene accession number as a point of reference only. However, individual transcript sequences of the same gene can differ through naturally occurring variations (e.g. polymorphisms), each with its own valid existence. This clone is substantially in agreement with the reference, but a complete review of all prevailing variants is recommended prior to use. [More info](#)

OTI Annotation: This clone was engineered to express the complete ORF with an expression tag. Expression varies depending on the nature of the gene.

Components: The ORF clone is ion-exchange column purified and shipped in a 2D barcoded Matrix tube containing 10ug of transfection-ready, dried plasmid DNA (reconstitute with 100 ul of water).

Reconstitution Method:

1. Centrifuge at 5,000xg for 5min.
2. Carefully open the tube and add 100ul of sterile water to dissolve the DNA.
3. Close the tube and incubate for 10 minutes at room temperature.
4. Briefly vortex the tube and then do a quick spin (less than 5000xg) to concentrate the liquid at the bottom.
5. Store the suspended plasmid at -20°C. The DNA is stable for at least one year from date of shipping when stored at -20°C.

Note: Plasmids are not sterile. For experiments where strict sterility is required, filtration with 0.22um filter is required.

RefSeq: [NM_014330.3](#)

RefSeq Size: 2399 bp

RefSeq ORF: 2025 bp

Locus ID: 23645

UniProt ID: [O75807](#)

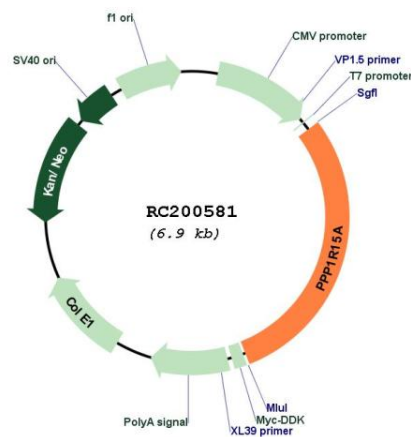
Cytogenetics: 19q13.33

Protein Families: Druggable Genome

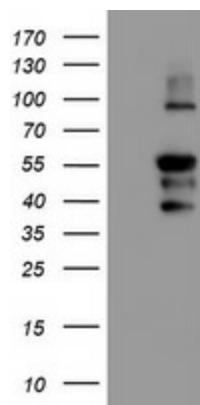
MW: 73.5 kDa

Gene Summary: This gene is a member of a group of genes whose transcript levels are increased following stressful growth arrest conditions and treatment with DNA-damaging agents. The induction of this gene by ionizing radiation occurs in certain cell lines regardless of p53 status, and its protein response is correlated with apoptosis following ionizing radiation. [provided by RefSeq, Jul 2008]

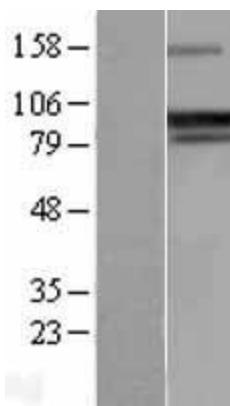
Product images:



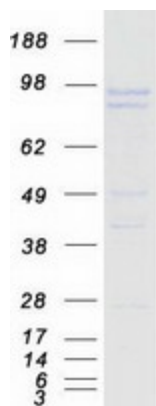
Circular map for RC200581



HEK293T cells were transfected with the pCMV6-ENTRY control (Cat# [PS100001], Left lane) or pCMV6-ENTRY PPP1R15A (Cat# RC200581, Right lane) cDNA for 48 hrs and lysed. Equivalent amounts of cell lysates (5 ug per lane) were separated by SDS-PAGE and immunoblotted with anti-PPP1R15A (Cat# [TA504310]). Positive lysates [LY415358] (100ug) and [LC415358] (20ug) can be purchased separately from OriGene.



Western blot validation of overexpression lysate (Cat# [LY415358]) using anti-DDK antibody (Cat# [TA50011-100]). Left: Cell lysates from untransfected HEK293T cells; Right: Cell lysates from HEK293T cells transfected with RC200581 using transfection reagent MegaTran 2.0 (Cat# [TT210002]).



Coomassie blue staining of purified PPP1R15A protein (Cat# [TP300581]). The protein was produced from HEK293T cells transfected with PPP1R15A cDNA clone (Cat# RC200581) using MegaTran 2.0 (Cat# [TT210002]).