

Product datasheet for **RC200579**

TMP21 (TMED10) (NM_006827) Human Tagged ORF Clone

Product data:

Product Type: Expression Plasmids
Product Name: TMP21 (TMED10) (NM_006827) Human Tagged ORF Clone
Tag: Myc-DDK
Symbol: TMP21
Synonyms: p23; P24(DELTA); p24d1; S311125; S3111125; Tmp-21-l; TMP21
Mammalian Cell Selection: Neomycin
Vector: pCMV6-Entry (PS100001)
E. coli Selection: Kanamycin (25 ug/mL)
ORF Nucleotide Sequence: >RC200579 ORF sequence
 Red=Cloning site Blue=ORF Green=Tags(s)

TTTTGTAATACGACTCACTATAGGGCGCCGGGAATTCGTCGACTGGATCCGGTACCGAGGAGATCTGCC
 GCC**CGATCGCC**

ATGTCTGGTTTGTCTGGCCACCAGCCCGCGCGGCCCTTTCCGTTAGCGTTGCTGCTTTTGTTCCTGC
 TCGGCCCCAGATTGGTCCTTGCCATCTCCTCCATCTGCCATTAACCTCGCAAGTGCCTCCGTGAGGA
 GATTCACAAGGACCTGCTAGTGACTGGCGCTACGAGATCTCCGACCAGTCTGGGGCGCTGGCGGCTG
 CGCAGCCACCTCAAGATCACAGATTCTGCTGGCCATATTCTCTACTCAAAGAGGATGCAACCAAGGGGA
 AATTTGCCTTTACCACTGAAGATTATGACATGTTGAAGTGTGTTTTGAGAGCAAGGGAACAGGGCGGAT
 ACCTGACCAACTCGTGATCCTAGACATGAAGCATGGAGTGGAGGCGAAAAATTACGAAGAGATTGCAAAA
 GTTGAGAAGCTCAAACATTAGAGGTAGAGCTGCGACGCCTAGAAGACCTTTCAGAACTATTGTTAATG
 ATTTTGCCTACATGAAGAAGAGAGAAGAGGAGATGCGTGATACCAACGAGTCAACAAACACTCGGGTCTT
 ATACTTCAGCATCTTTTCAATGTTCTGTCTCATTGGACTAGCTACCTGGCAGGTCTTCTACCTGCGACGC
 TTCTTCAAGGCCAAGAAATTGATTGAG

ACGCGTACGCGGCGCTCGAGCAGAACTCATCTCAGAAGAGGATCTGGCAGCAATGATATCCTGGATT
 ACAAGGATGACGACGATAAGGTTTAA



[View online »](#)

Protein Sequence: >RC200579 protein sequence
Red=Cloning site Green=Tags(s)

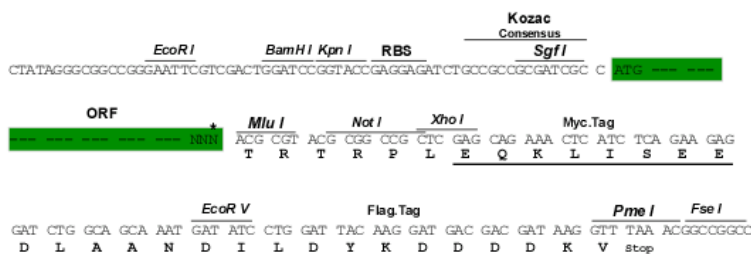
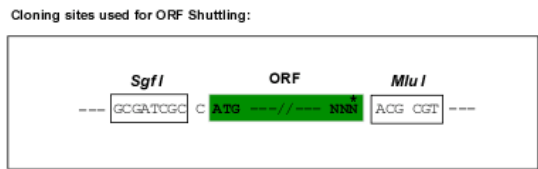
MSGLSGPPARRGPFPLALLLLFLLGPRLLVAISFHLPIINSRKCLREEIHKDLLVTGAYEISDQSGGAGGL
 RSHLKITDSAGHILYSKEDATKGFKAFTTEDYDMFEVCFESKGTGRIPDQLVILDMKHGVEAKNYEEIAK
 VECLKPLEVELRRLEDLSEIVNDFAYMKKREEEMRDTNESTNTRVLVYFISFMSFCLIGLATWQVFLRR
 FFKAKKLIIE

TRTRPLEQKLISEEDLAANDILDYKDDDDKV

Chromatograms: https://cdn.origene.com/chromatograms/mk6143_g06.zip

Restriction Sites: SgfI-MluI

Cloning Scheme:



* The last codon before the Stop codon of the ORF

ACCN: NM_006827

ORF Size: 657 bp

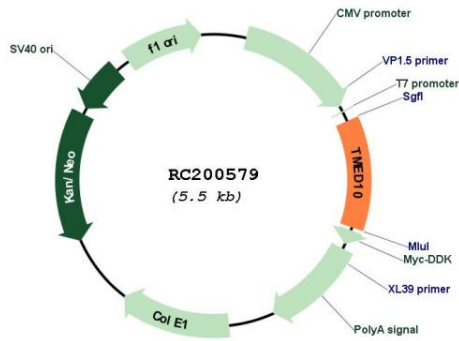
OTI Disclaimer: The molecular sequence of this clone aligns with the gene accession number as a point of reference only. However, individual transcript sequences of the same gene can differ through naturally occurring variations (e.g. polymorphisms), each with its own valid existence. This clone is substantially in agreement with the reference, but a complete review of all prevailing variants is recommended prior to use. [More info](#)

OTI Annotation: This clone was engineered to express the complete ORF with an expression tag. Expression varies depending on the nature of the gene.

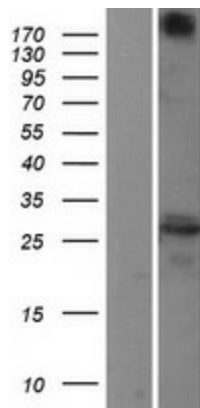
Components: The ORF clone is ion-exchange column purified and shipped in a 2D barcoded Matrix tube containing 10ug of transfection-ready, dried plasmid DNA (reconstitute with 100 ul of water).

Reconstitution Method:	<ol style="list-style-type: none">1. Centrifuge at 5,000xg for 5min.2. Carefully open the tube and add 100ul of sterile water to dissolve the DNA.3. Close the tube and incubate for 10 minutes at room temperature.4. Briefly vortex the tube and then do a quick spin (less than 5000xg) to concentrate the liquid at the bottom.5. Store the suspended plasmid at -20°C. The DNA is stable for at least one year from date of shipping when stored at -20°C.
Note:	Plasmids are not sterile. For experiments where strict sterility is required, filtration with 0.22um filter is required.
RefSeq:	NM_006827.6
RefSeq Size:	4163 bp
RefSeq ORF:	660 bp
Locus ID:	10972
UniProt ID:	P49755
Cytogenetics:	14q24.3
Domains:	EMP24_GP25L
Protein Families:	Transmembrane
MW:	25 kDa
Gene Summary:	This gene is a member of the EMP24/GP25L/p24 family and encodes a protein with a GOLD domain. This type I membrane protein is localized to the plasma membrane and golgi cisternae and is involved in vesicular protein trafficking. The protein is also a member of a heteromeric secretase complex and regulates the complex's gamma-secretase activity without affecting its epsilon-secretase activity. Mutations in this gene have been associated with early-onset familial Alzheimer's disease. This gene has a pseudogene on chromosome 8. [provided by RefSeq, Jul 2008]

Product images:



Circular map for RC200579



Western blot validation of overexpression lysate (Cat# [LY402043]) using anti-DDK antibody (Cat# [TA50011-100]). Left: Cell lysates from untransfected HEK293T cells; Right: Cell lysates from HEK293T cells transfected with RC200579 using transfection reagent MegaTran 2.0 (Cat# [TT210002]).