

## Product datasheet for RC200573

### PAN2 (NM\_014871) Human Tagged ORF Clone

#### Product data:

Product Type:	Expression Plasmids
Product Name:	PAN2 (NM_014871) Human Tagged ORF Clone
Tag:	Myc-DDK
Symbol:	PAN2
Synonyms:	USP52
Mammalian Cell Selection:	Neomycin
Vector:	pCMV6-Entry (PS100001)
E. coli Selection:	Kanamycin (25 ug/mL)
ORF Nucleotide Sequence:	>RC200573 ORF sequence Red=Cloning site Blue=ORF Green=Tags(s)

TTTTGTAATACGACTCACTATAGGGCGGCCGGAATTCGTCGACTGGATCCGGTACCGAGGAGATCTGCC  
GCC**CGATCGCC**

ATGAACCTTTGAGGGTCTGGACCCTGGACTGGCAGAATATGCCCCAGCCATGCATTCTGCCCTGGACCCTG  
TCTTGGATGCCACCTGAACCCAAATCTGCTACAGAATGTGGAGCTGGACCCAGAGGGAGTGGCCTTGGAG  
GGCTCTCCCGTCCAGGAATCAGTGCACATAATGGAAGGTGTCTACTCTGAATTGCACAGCGTGGTGGCT  
GAAGTGGGTGTACCTGTTCCGCTCTCCACTTTGACTTGCACGAGGAGATGCTGTGGGTGGGAGCCACG  
GGGCCATGCCACTTCATTTTTGGCCAGCCTTGGAGCGCTACTCATCCTTTCAAGTCAATGGCAGTGA  
TGATATTCGGCAGATCCAGAGCCTGGAGAATGGTATCCTTTTTCTCACCAGAACAACCTCAAGTATATG  
GCCCGTGGGGCCCTCATTATATTGATTACCTGCTGGATGAGAATGAGGATATGCACAGTCTCCTACTGA  
CTGACAGCAGCACTCTACTCGTTGGTGGGCTGCAGAATCACATACTAGAGATTGATCTTAACACTGTCCA  
GGAGACTCAGAAGTATGCAGTAGAGACGCTGGAGTCACCATCATGAGACAGACAAATCGTTCTTCTTC  
TGCGGCCACACGTCTGGCAAGGTTCCCTGAGAGACCTCCGACTTTTAAAGTGGAACATGAGTTTGATG  
CCTTCTCAGGAAGTCTGTGACACTTTGATGTGCATGGCAACCTGCTAGCTGCCTGTGGCTTCTCCAGCCG  
CCTCACTGGCCTGGCCTGCGACCGTTTCTCAAGGTGTATGATTTGCGCATGATGCGTCCATCACACCA  
CTTCAAGTACATGTGGATCCTGCCTTCTTGGCTTCATTCTACATATACTTCTCGTCTTGCTATCATCT  
CTCAGTCAGGGCAGTGCCAATTCTGTGAACCCACAGGCCTGGCCAACCCAGCCGATATCTTTCATGTGAA  
TCTGTGGGGCCTCTGCTAATGACATTTGATGTGTGAGCCAGCAAGCAGGCTCTGGCCTTTGGGATTCT  
GAGGGCTGTGTGCACCTCTGGACTGATTCGCCGAGCCTTCTTCAACCCCTACTCCCGTGGAGACTGAGT  
TTGCTTTGCCGTGTCTCGTGGACTCACTGCCTCCTCTGGACTGGAGCCAGGACCTGCTGCCTTTCCCT  
CATCCCTGTCCCACTCACCCTGACACACTTCTCTGATTGGCCTGCTGCCAATCTGCTCCAGCTCCC  
AGGCGAGCACCACCGTGGATGCAGAGATTCTGCGCACCATGAAGAAGGTGGGCTTCAATGGCTATGCGC  
CCAATCCCGCACCAGGCTGCGCAATCAGATACCCTACAGACTCAAGGAGTCAGACAGTGAATTTGACAG  
CTTCAGCCAGGTCAGTCACTAGTACAGTAGGACGAGAAGGAGGAACCATCTCCACATGTTTCTAAGAAA



[View online »](#)

TACCGCAAGGTGACCATCAAATATTCCAAGCTAGGGCTGGAGGACTTTGACTTCAAACACTACAATAAGA  
CCTTGTGGCTGGATTAGAGCCCCACATTTCCCAACGCCTACTGTAAGTGCATGATCCAGGTGCTCTATTT  
CCTGGAGCCTGTACGCTGTCTAATTTCAAACCACCTTTGCCAGAAGGAGTTCTGTCTGGCATGTGAGCTG  
GGCTTCTGTTCACATGTTGGACCTCTCTCGTGGTGACCCTTCCAGGGCAATAATTTTCTTCGGGCAT  
TCCGTAATTTCTGAGGCCTCAGCCCTCGGTCTAATCCTGGCTGACTCAGATGAGGCCTCAGGCAAGGG  
CAATCTGGCCAGGCTCATTGAGAGTGGAAATCGTTTCTTCTCACTCACTGCATCAAGATATGCAGGAG  
CTGGAATACCACAGGCTTATCGAGGTGCTGGAGGCAGCAGCTTTTGTCTATCGGGGACTCTGTTATTG  
GGCAGCTCTTCAGCTGTGAGATGGAGAAGTGCAGCCTCTGCCGCTGTGGCAGTGAGACCGTGCGAGCCTC  
ATCCACTCTGCTTTTCACTCTCTACCTGATGATAAACTGGGAAGAACTATGACTTTGCTCAGGTG  
CTGAAGCGAAGCATCTGCCTGGACCAGAATACACAGGCCTGGTGTGACACCTGTGAAAAGTACCAGCCCA  
CGATTCAGACCCGAACATCCGCCATCTGCCAGATATTCTTGTCAATTTGTGAGGTGAACAGCTCAAA  
AGAGGCTGATTTCTGGAGAATGCAGGCTGAGGTTGCCCTCAAGATGGCAGTAAAGAAACACGGTGGGAA  
ATCTCAAAGAACAAGGAATTTGCTTTGGCTGATTGGAAGAACTAGGGAGTCCAGAGGTGTGCTGGTGT  
GTCCCTCCATTGAGGAGTTGAAGAACGTCTGGCTTCTTTCTCCATTGCGATGAAGATGACCAAAAACAA  
AGGGCTGGATGTTTGAATTTGACTGATGGGGATGAGATGCAGTGGGGCCAGCCAGGGCAGAGGAGGAG  
CATGGTGTCTATGTGATGACCTGATGGCTACTGTGGTACACATCCTGGACTCACGCACAGGGGGCAGCC  
TGGTGGCTCACATCAAAGTTGGAGAGACCTACCACCAGCGCAAGGAGGGCGTTACTCACCAGCAGTGGTA  
TCTGTTCAATGACTTTCTATTGAACCTATTGATAAGCATGAAGCTGTGCAGTTTGCATGAATTTGAAA  
GTACCTGCAATCCTTTATTATGTCAAACGGAATCTCAATTCAGATACAACCTGAACATCAAGAACCCTA  
TTGAGGCAAGTGTCTTGTGGCTGAAGCCTCGCTGGCAGCGAAGCAGCGGAAAACACATACTACCTTTAT  
TCCACTGATGCTGAATGAGATGCCACAGATTGGGGACCTGGTGGTCTGGATGCTGAGTTTGTACCCTT  
AATGAGGAGGAAGCAGAGTTACGCAGTGTGGTACCAAGTCTACCATTAACCAAGCCAGATGTCAGTAG  
CCAGATTACCTGTGTTTCGGGGCCAGGGACCAATGAGGGTATCCCCTTATTGATGACTACATCTCTAC  
CCAGGAGCAGGTGGTGGATTACTTGACTCAATACTCGGGTATAAAGCCTGGTGACCTCGATGCCAAAATT  
TCTCCAAGCACCTAACAACTCTCAAGTCTACCTACTTAAAGCTTCGTTTTCTCATTGACATTGGAGTCA  
AGTTTGTGGTCAATGGCCTGCAGAAGGACTTCCGGTCACTCAACCTGATGGTGCCCAAGGACCAAGTCTT  
TGACACTGTCTACCTGTTCCATATGCCCGAAAACGAATGATTTCCCTGCGATTCTTGGTACTTTT  
CTGGACCTGAAGATTCAAGGGGAAACCCATGACAGTATTGAGGATGCCCGCACAGCCCTCAGCTGTACC  
GAAAGTATCTGGAGCTAAGCAAAAATGGCACTGAGCCTGAGTCTTCCACAAGGTGCTCAAGGGTCTTTA  
TGAGAAGGGCAGAAAGATGGACTGGAAGGTGCCTGAGCCTGAGGGCCAAACAAGTCCAAGAATGCAGCT  
GTCTTCTCCTCAGTGTGGCGCTC

ACGCGTACGCGGCGCTCGAGCAGAACTCATCTCAGAAGAGGATCTGGCAGCAAATGATATCCTGGATT  
ACAAGGATGACGACGATAAGGTTTAA

**Protein Sequence:** >RC200573 protein sequence  
 Red=Cloning site Green=Tags(s)

```

MNFEGLDPLAEYAPAMHSALDPVLD AHLNPNLLQNVLDPEGVLEALPVQESVHIMEGVVSELHSVVA
EVGVPVSVSHFDLHEEMLWVGGSHGGHATSF FGPALERYSSFQVNGSDDIRQIQSLENGILFLT KNNLKYM
ARGGLIIFDYLLDENEDMHSLLL TDSSTLLVGG LQNHILEIDLNTVQETQKYAVETPGVTIMRQTNRFF
CGHTSGKVSLRDLRRTFKVEHEFD AFSGSLSDFDVHG NLLAACGFSSRLTGLACDRFLKVYDLRMMRAITP
LQVHVDP AFLRFIPTYT SRLAIISQSGQCQFCEPTGLANPADIFHVNVPVGP LLMTFDVSASKQALAFGDS
EGCVHLWTDSP EFSFNYSRETEFALPCLVDSL PPLDWSQDLLPLSLIPVPLTTD TLLSDWPAANSAPAP
RRAPPVDAEILRTMKKVGFIGYAPNPRTR LRNQIPYRLKESDSEFDSFSQVTESPVGREEEPHLMVSKK
YRKVTIKYSKLGLEDFDFKHYNKTLFAGLEPHIPNAYCNCMIQVLYFLEPV RCLIQNHLCQKEFCLACEL
GFLFHMLDL SRGDPCQGNFLRAFRTIPEASALGLILADSDEASGKGNL ARLIQRWNRFIL TQLHQDMQE
LEIPQAYRGAGGSSFCSSGDSVIGQLF SCEMENC SLCRGSETVRASSTLLFTL SYPDDKTGKNYDFAQV
LKRSICLDQNTQAWCDTCEKYQPTIQTRNIRHLPDILVINCEVNSKEADFWRMQAEVAFKMAVKKHGGE
ISKNKEFALADWKELGSP EGVLCPSIEELKNVWLPFSIRMKMTKNKGLDVCNWTGDGEMQWGPAREEE
HGYYVYDLMATVVHILDSRTGGSLVAHIK VGETYHQKKEGVTHQQWYLFNDFLIEPIDKHEAVQFDMNWK
VPAILYYVKNRNLNSRYNLNIKNPIEASVLLAEASLARKQRKTHTTFIPLMLNEMPQIGDLVGLDAEFVTL
NEEEAELRSDGKSTIKPSQMSVARITCVRGQGPNEGIPFIDDI STQEQQVVDYLTQYSGIKPGDLDAKI
SSKHLTTLKSTYLKLRFLIDIGVKFVGHGLQKDFRVINLMVPKQVLDTVYLFHMPRKRMI SLRFLAWYF
LDLKIQGETHDSIEDARTALQLYRKYLELSKNGTEPESFHVKVLKGLYEKGRKMDWKVPEPEGQTS PKNAA
VFSSVLAL
  
```

TRTRPLEQKLISEEDLAANDILDYKDDDDKV

**Chromatograms:** [https://cdn.origene.com/chromatograms/mk6169\\_h01.zip](https://cdn.origene.com/chromatograms/mk6169_h01.zip)

**Restriction Sites:** SgfI-MluI

**Cloning Scheme:**

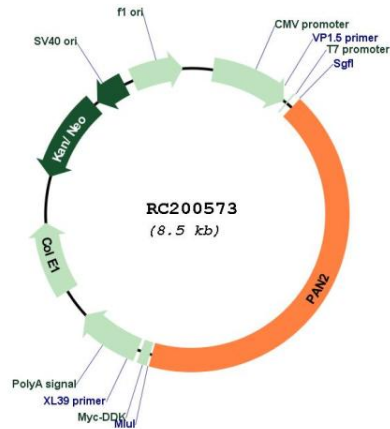


**ACCN:** NM\_014871

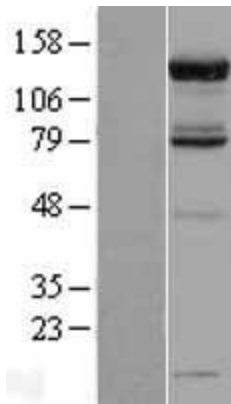
**ORF Size:** 3594 bp

<b>OTI Disclaimer:</b>	The molecular sequence of this clone aligns with the gene accession number as a point of reference only. However, individual transcript sequences of the same gene can differ through naturally occurring variations (e.g. polymorphisms), each with its own valid existence. This clone is substantially in agreement with the reference, but a complete review of all prevailing variants is recommended prior to use. <a href="#">More info</a>
<b>OTI Annotation:</b>	This clone was engineered to express the complete ORF with an expression tag. Expression varies depending on the nature of the gene.
<b>Components:</b>	The ORF clone is ion-exchange column purified and shipped in a 2D barcoded Matrix tube containing 10ug of transfection-ready, dried plasmid DNA (reconstitute with 100 ul of water).
<b>Reconstitution Method:</b>	<ol style="list-style-type: none"><li>1. Centrifuge at 5,000xg for 5min.</li><li>2. Carefully open the tube and add 100ul of sterile water to dissolve the DNA.</li><li>3. Close the tube and incubate for 10 minutes at room temperature.</li><li>4. Briefly vortex the tube and then do a quick spin (less than 5000xg) to concentrate the liquid at the bottom.</li><li>5. Store the suspended plasmid at -20°C. The DNA is stable for at least one year from date of shipping when stored at -20°C.</li></ol>
<b>RefSeq:</b>	<a href="#">NM_014871.2</a> , <a href="#">NP_055686.2</a>
<b>RefSeq Size:</b>	5289 bp
<b>RefSeq ORF:</b>	3597 bp
<b>Locus ID:</b>	9924
<b>UniProt ID:</b>	<a href="#">Q504Q3</a>
<b>Cytogenetics:</b>	12q13.3
<b>Domains:</b>	UCH
<b>Protein Families:</b>	Protease
<b>MW:</b>	135 kDa
<b>Gene Summary:</b>	This gene encodes a deadenylase that functions as the catalytic subunit of the polyadenylate binding protein dependent poly(A) nuclease complex. The encoded protein is a magnesium dependent 3' to 5' exoribonuclease that is involved in the degradation of cytoplasmic mRNAs. Alternate splicing results in multiple transcript variants. [provided by RefSeq, Oct 2009]

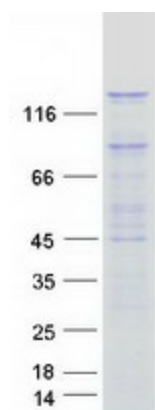
Product images:



Circular map for RC200573



Western blot validation of overexpression lysate (Cat# [LY402390]) using anti-DDK antibody (Cat# [TA50011-100]). Left: Cell lysates from untransfected HEK293T cells; Right: Cell lysates from HEK293T cells transfected with RC200573 using transfection reagent MegaTran 2.0 (Cat# [TT210002]).



Coomassie blue staining of purified PAN2 protein (Cat# [TP300573]). The protein was produced from HEK293T cells transfected with PAN2 cDNA clone (Cat# RC200573) using MegaTran 2.0 (Cat# [TT210002]).