

Product datasheet for **RC200572L4V**

GNG5 (NM_005274) Human Tagged ORF Clone Lentiviral Particle

Product data:

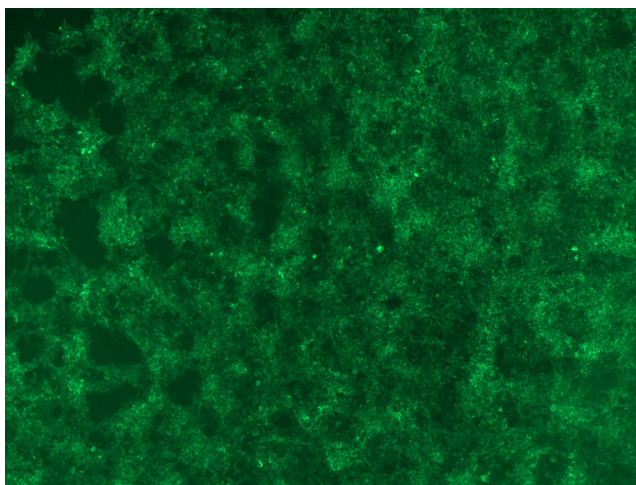
Product Type:	Lentiviral Particles
Product Name:	GNG5 (NM_005274) Human Tagged ORF Clone Lentiviral Particle
Symbol:	GNG5
Mammalian Cell Selection:	Puromycin
Vector:	pLenti-C-mGFP-P2A-Puro (PS100093)
Tag:	mGFP
ACCN:	NM_005274
ORF Size:	204 bp
ORF Nucleotide Sequence:	The ORF insert of this clone is exactly the same as(RC200572).
OTI Disclaimer:	The molecular sequence of this clone aligns with the gene accession number as a point of reference only. However, individual transcript sequences of the same gene can differ through naturally occurring variations (e.g. polymorphisms), each with its own valid existence. This clone is substantially in agreement with the reference, but a complete review of all prevailing variants is recommended prior to use. More info
OTI Annotation:	This clone was engineered to express the complete ORF with an expression tag. Expression varies depending on the nature of the gene.
RefSeq:	NM_005274.1
RefSeq Size:	823 bp
RefSeq ORF:	207 bp
Locus ID:	2787
UniProt ID:	P63218
Cytogenetics:	1p22.3
Domains:	G-gamma
Protein Pathways:	Chemokine signaling pathway
MW:	7.3 kDa



[View online »](#)

Gene Summary:

G proteins are trimeric (alpha-beta-gamma) membrane-associated proteins that regulate flow of information from cell surface receptors to a variety of internal metabolic effectors. Interaction of a G protein with its activated receptor promotes exchange of GTP for GDP that is bound to the alpha subunit. The alpha-GTP complex dissociates from the beta-gamma heterodimer so that the subunits, in turn, may interact with and regulate effector molecules (Gilman, 1987 [PubMed 3113327]; summary by Ahmad et al., 1995) [PubMed 7606925]. [supplied by OMIM, Nov 2010]

Product images:

[RC200572L4] was used to prepare Lentiviral particles using [TR30037] packaging kit. HEK293T cells were transduced with RC200572L4V particle to overexpress human GNG5-mGFP fusion protein.