

## Product datasheet for **RC200565**

### **KIAA0494 (EFCAB14) (NM\_014774) Human Tagged ORF Clone**

#### **Product data:**

Product Type:	Expression Plasmids
Product Name:	KIAA0494 (EFCAB14) (NM_014774) Human Tagged ORF Clone
Tag:	Myc-DDK
Symbol:	KIAA0494
Synonyms:	KIAA0494
Mammalian Cell Selection:	Neomycin
Vector:	pCMV6-Entry (PS100001)
E. coli Selection:	Kanamycin (25 ug/mL)



[View online »](#)

**ORF Nucleotide Sequence:**

>RC200565 ORF sequence  
 Red=Cloning site Blue=ORF Green=Tags(s)

TTTTGTAATACGACTCACTATAGGGCGGCCGGAATTCGTCGACTGGATCCGGTACCGAGGAGATCTGCC  
 GCC**CGGATCGCC**

ATGAAAAAGCGCAAAGAGCTCAATGCATTGATTGGTTGGCTGGGGACAGCCGGAGAAGAAGCCCAAGA  
 AAGGCCCAAGCAGTCACCGCCTGCTTCGACTGAGCCTCCCGACTCAGACTCTGAGTCCAGCTCCGAAGA  
 GGAAGAGGAATTCGGTGTGGTTGAAATCGCTCTCGCTTTGCCAAGGGAGACTATTTACGATGCTGCAAG  
 ATCTGTTATCCGCTCTGTGGTTTTGTCATCCTTGTGCCTGTGTTGTGGCCTGTGTTGGCTTGGTGTGGA  
 TGCAGGTTGCTCTCAAGGAGGATCTGGATGCCCTCAAGGAAAAATTCGAACAATGGAATCTAATCAGAA  
 AAGCTCATTCCAAGAAATCCCCAACTAATGAAGAACTACTCAGCAAGCAAAAACAACTTGAGAAGATT  
 GAATCTGGAGAGATGGGTTTGAACAAAGCTGGATAAACATCACAGAAATGAATAAGCAGATTTCTCTGT  
 TGACTTCTGCAGTGAACCACTCAAAGCCAATGTTAAGTCAGCTGCAGACTTGATTAGCCTGCCTACCAC  
 TGTAGAGGGACTTCAGAAGAGTGTAGCTCCATTGGCAATACTTTAAACAGCGTCCATCTTGCTGTGGAA  
 GCACTACAGAAAAGTGTGGATGAACACAAGAAAACGATGGAATTAAGTGCAGAGTGATATGAATCAGCACT  
 TCTTGAAGGAGACTCCTGGAAGCAACCAGATCATTCCGTCACCTTCAGCCACATCAGAAGTTGACATAA  
 AACCCACAGTGAGAAATTTGAAACAGGATATCCTGTACCTTCACAACTCTTTAGAGGAGGTAACAGTGCC  
 CTAGTGGGGTACCAGAGACAGAAATGATCTTAAACTCGAGGGAAATGAACGAGACAGTCAGTAATCTTACCC  
 AGAGAGTCAACCTGATAGAAAGCGATGTGGTTGCTATGAGCAAGGTAGAAAAGAAAGCAACCTGTCTT  
 CAGCATGATGGGTGATAGATCTGCCACTCTGAAAAGACAGTCTTTGGATCAAGTCACCAACAGAACAGAT  
 ACAGTAAAAATCCAAAGCATAAAGAAAGAAGATAGTTCAAATTCAGGTATCCAAGCTAAGAGAGAAAC  
 TCCAGTGATCAGTGCTTTACAAACAACCTGAGAGCAACAGGCCCTCCAGAGACCCGCGATGAGAGCA  
 AGTAGAGAGTTTTACATCAAAGCCATCAGCAATTGCCAAAATTTTACAGTTTTCTGGAGACCCAGTTGAG  
 AAAGCTGCCCAACTAAGACCTATCTCCCTACCAGGAGTTTCTAGCACTGAAGATCTTCAGGATTTATTCC  
 GCAAGACTGGCCAGGACGTGGATGGGAAGCTGACCTACCAGGAAATCTGGACCTCCCTAGGTTCTGCTAT  
 GCCAGAACCAGAGAGCTTGAGAGCATTGATTCCGATGGAGATGGAAGATACTCATTCTGGAGCTAAGG  
 GTAGCTTTAGGTATC

**ACGCGT**ACGCGGCCGCTCGAGCAGAAACTCATCTCAGAAGAGGATCTGGCAGCAAATGATATCCTGGATT  
 ACAAGGATGACGACGATAAGGTTTAA

**Protein Sequence:**

>RC200565 protein sequence  
 Red=Cloning site Green=Tags(s)

MKKRKELNALIGLAGDSRRKKPKKGPSSHRLLRTEPPDSDSESSSEEEEEFGVVGNRSRFAKGDYLRCKK  
 ICYPLCGFVILAACVVACVGLVWMQVALKEDLDALKEKFRMTESNQKSSFQEIPKLNELLKQKQLEKI  
 ESGEMGLNKVWINITEMNKQISLLTSAVNHLKANVKSAADLISLPTTVEGLQKSVASIGNTLNSVHLAVE  
 ALQKTVDHEHKTMEQLQSDMNQHFLEKTPGSNQIIPSPSATSELDNKTHSENKQDILYLHNSLEEVNSA  
 LVGYQRQNDLKLEGMNETVSNLTQRVNLIESDVVAMSKVEKKANLFSMMGDRSATLKRQSLDQVTNRD  
 TVKIQSIKKEDSSNSQVSKLREKLQLISALTNKPESNRPPETADEEQVESFTSKPSALPKFSQFLGDPVE  
 KAAQLRPISLPGVSSTEDLQDLFRKTGQDVGKLYQEIWTSLGSAMPEPELRAFSDSDGGRYSFLELR  
 VALGI

**TRTRPLEQKLI**SEEDLAANDILDYKDDDDKV

**Chromatograms:**

[https://cdn.origene.com/chromatograms/mk6386\\_b10.zip](https://cdn.origene.com/chromatograms/mk6386_b10.zip)

**Restriction Sites:**

SgfI-MluI

**Cloning Scheme:**


**ACCN:** NM\_014774

**ORF Size:** 1485 bp

**OTI Disclaimer:** The molecular sequence of this clone aligns with the gene accession number as a point of reference only. However, individual transcript sequences of the same gene can differ through naturally occurring variations (e.g. polymorphisms), each with its own valid existence. This clone is substantially in agreement with the reference, but a complete review of all prevailing variants is recommended prior to use. [More info](#)

**OTI Annotation:** This clone was engineered to express the complete ORF with an expression tag. Expression varies depending on the nature of the gene.

**Components:** The ORF clone is ion-exchange column purified and shipped in a 2D barcoded Matrix tube containing 10ug of transfection-ready, dried plasmid DNA (reconstitute with 100 ul of water).

- Reconstitution Method:**
1. Centrifuge at 5,000xg for 5min.
  2. Carefully open the tube and add 100ul of sterile water to dissolve the DNA.
  3. Close the tube and incubate for 10 minutes at room temperature.
  4. Briefly vortex the tube and then do a quick spin (less than 5000xg) to concentrate the liquid at the bottom.
  5. Store the suspended plasmid at -20°C. The DNA is stable for at least one year from date of shipping when stored at -20°C.

**RefSeq:** [NM\\_014774.3](#)

**RefSeq Size:** 5794 bp

**RefSeq ORF:** 1488 bp

**Locus ID:** 9813

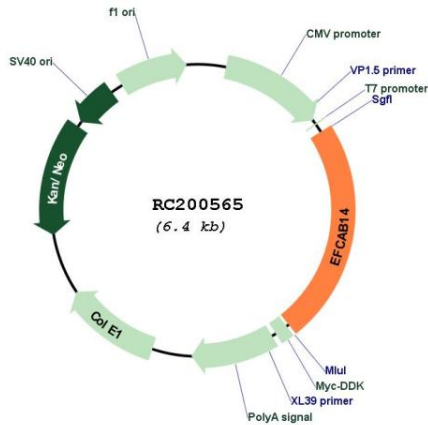
**UniProt ID:** [O75071](#)

**Cytogenetics:** 1p33

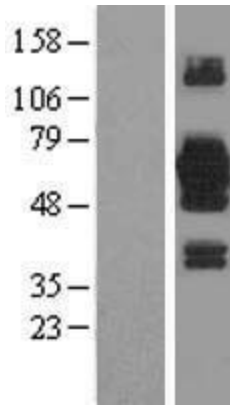
Protein Families: Transmembrane

MW: 55 kDa

**Product images:**



Circular map for RC200565



Western blot validation of overexpression lysate (Cat# [LY415039]) using anti-DDK antibody (Cat# [TA50011-100]). Left: Cell lysates from untransfected HEK293T cells; Right: Cell lysates from HEK293T cells transfected with RC200565 using transfection reagent MegaTran 2.0 (Cat# [TT210002]).



Coomassie blue staining of purified EFCAB14 protein (Cat# [TP300565]). The protein was produced from HEK293T cells transfected with EFCAB14 cDNA clone (Cat# RC200565) using MegaTran 2.0 (Cat# [TT210002]).